



General Certificate of Secondary Education
Foundation Tier and Higher Tier
June 2011

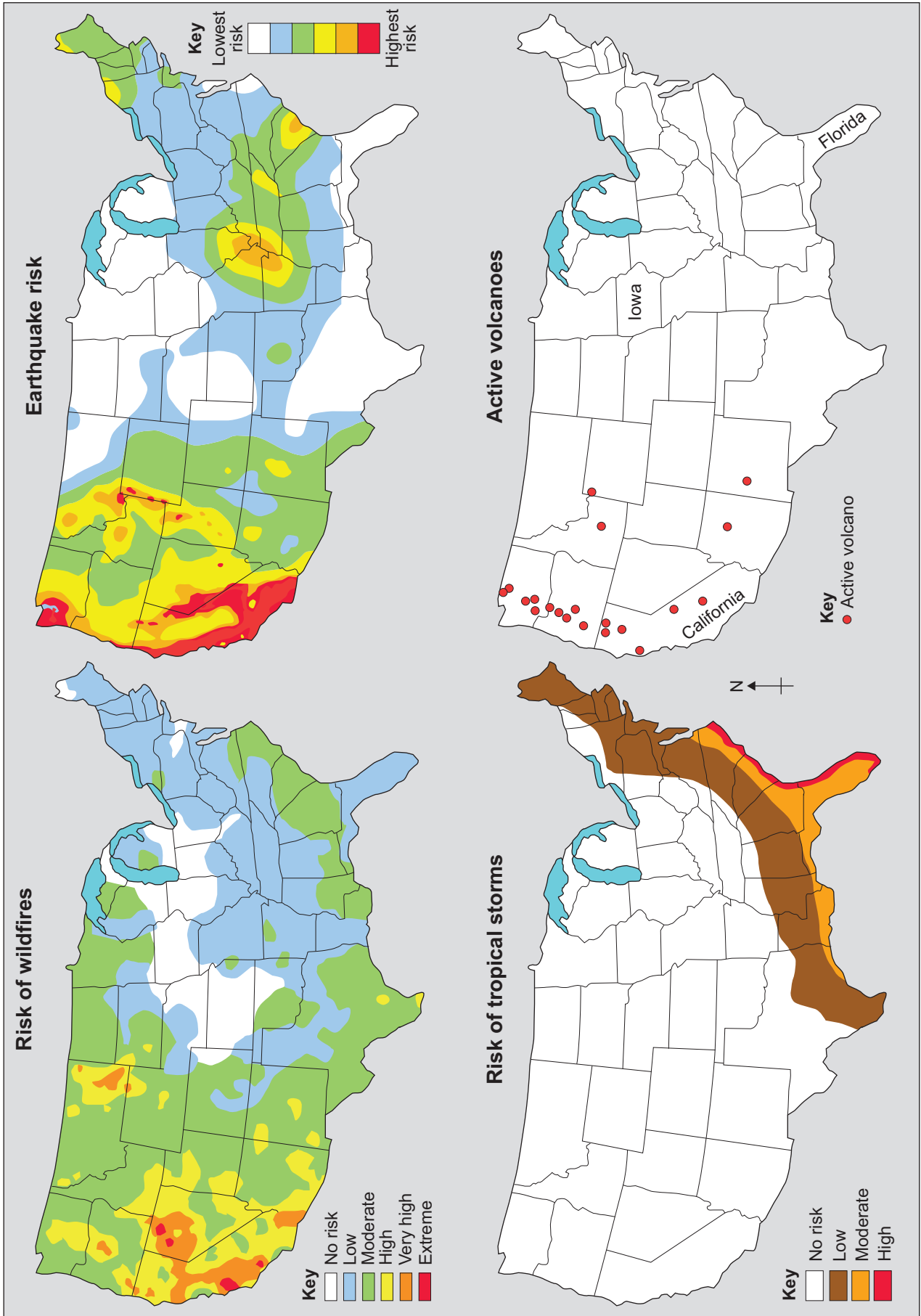
**Geography
(Specification B)**

40352F & 40352H

Unit 2

Insert

For use with Question 1
Figure 1



For use with Question 2
Figure 2

Figure 2 cannot be reproduced here due to third-party copyright constraints.

For use with Question 6
Figure 10

Figure 10, diagram of Arctic ice cap, cannot be reproduced here due to third-party copyright constraints.

**For use with Question 7
Figure 12**

Figure 12, picture of a desert, cannot be reproduced here due to third-party copyright constraints.

END OF FIGURES

There is no source material printed on this page

There is no source material printed on this page

There is no source material printed on this page

ACKNOWLEDGEMENT OF COPYRIGHT-HOLDERS AND PUBLISHERS

Permission to reproduce all copyright material has been applied for. In some cases, efforts to contact copyright-holders have been unsuccessful and AQA will be happy to rectify any omissions of acknowledgements in future papers if notified.

- Figure 1: Three maps (earthquakes, tropical storms and volcanoes) © US Geological Survey, Department of the Interior/USGS
Figure 1: (wildfires map) www.wildfiretoday.com (USFS/WFAS)
Figure 2: (map) www.mountsthelens.com
Figure 2: (gift shop) www.visitmountsthelens.com
Figure 10: New York Times, www.nytimes.com
Figure 12: United Nations Environment Programme