



General Certificate of Secondary Education
Foundation Tier and Higher Tier
January 2010

GCSE Geography (Specification B)

40351F & 40351H

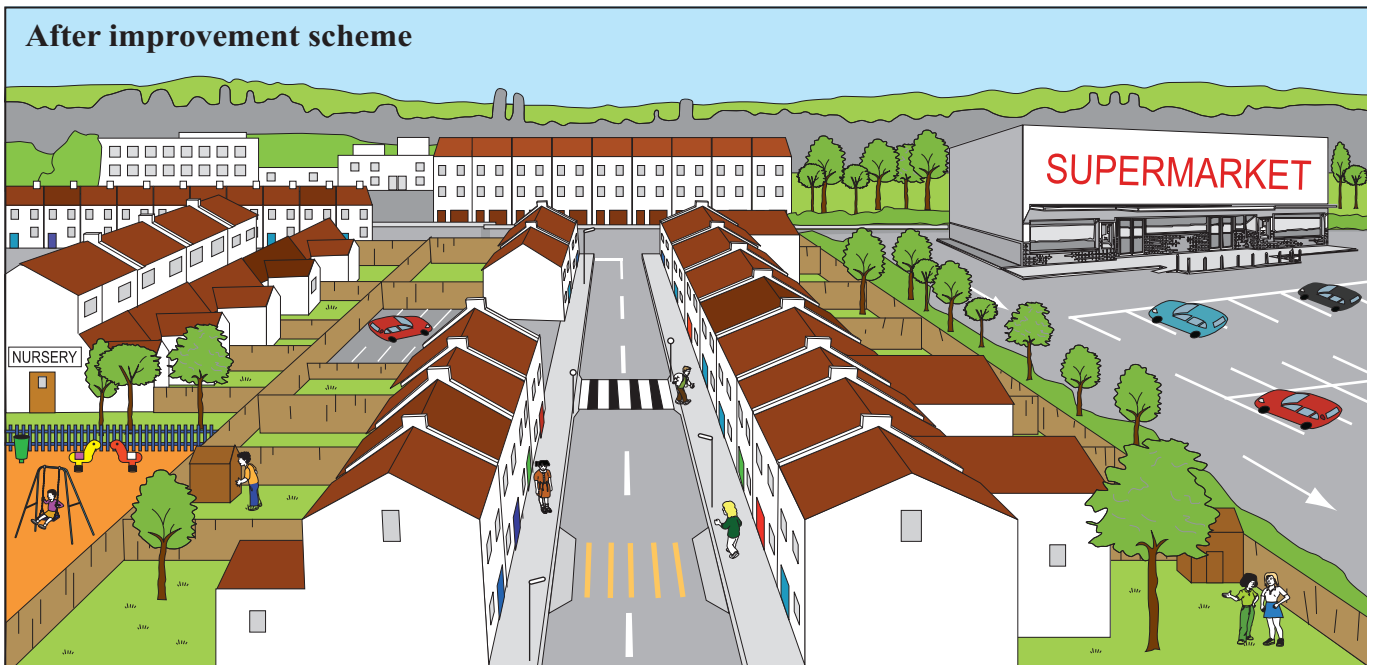
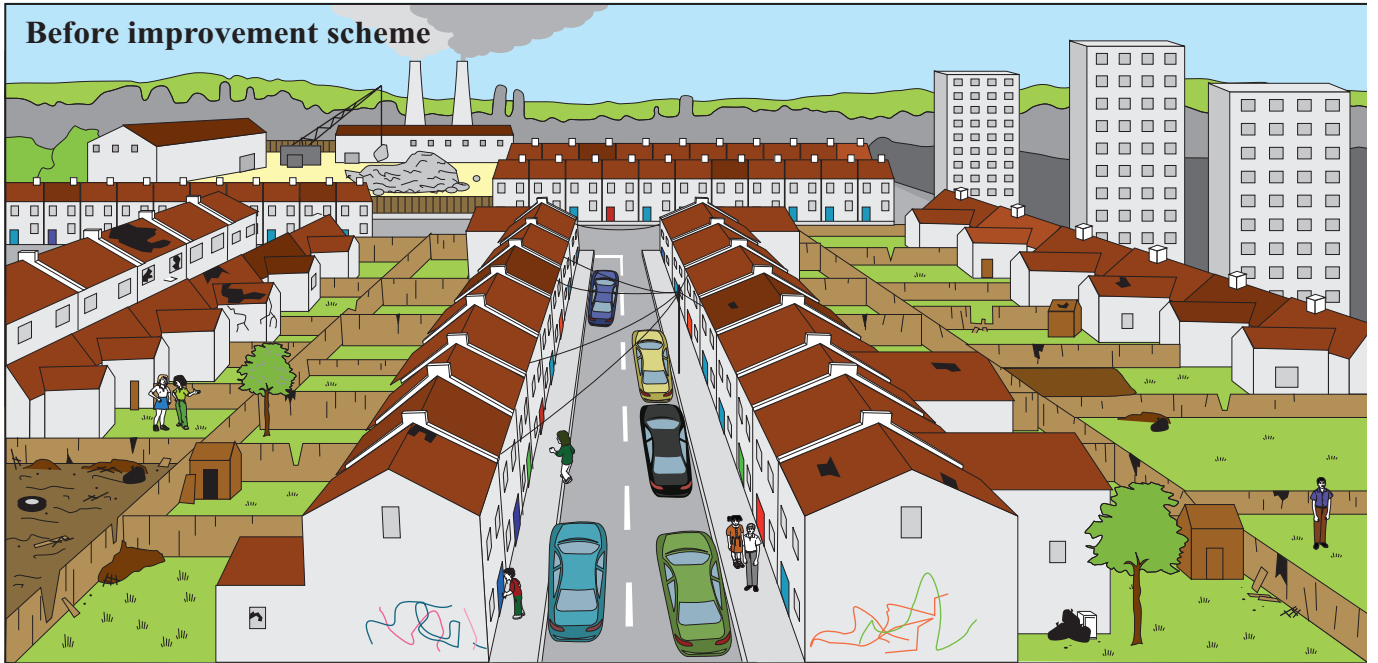
Paper 1

Insert

**For use with Question 1 (b)
Foundation Tier – Figure 3
Higher Tier – Figure 2**



For use with Question 2 (d)
Foundation Tier – Figure 11
Higher Tier – Figure 9



For use with Question 2 (e)
 Foundation Tier – Figure 12
 Higher Tier – Figure 10

Greenways Urban ‘Eco-village’

Greenways ‘eco-village’ is a sustainable urban redevelopment project near the city centre. It is a mixed-use development of houses, flats and other facilities.



The Greenways ‘eco-village’ is more than just houses. It will have a community hall, café, nursery and health centre. Recreational facilities and open space for children and adults are included in the plan. Local shops and offices will create job opportunities and provide services for the community.

Greenways – for a sustainable future



Greenways will be part of a sustainable urban redevelopment scheme. With buildings and transport responsible for nearly 80% of carbon emissions, it is important to create low energy use housing and transport systems for the future.

Greenways will include:

- carbon neutral housing with double glazing and high levels of insulation
- low cost wind and solar energy
- green urban walkways and a car sharing scheme
- cycle paths to the centre of the city and nearby railway station
- recycling facilities.

There is no material printed on this page

ACKNOWLEDGEMENT OF COPYRIGHT-HOLDERS AND PUBLISHERS

Permission to reproduce all copyright material has been applied for. In some cases, efforts to contact copyright-holders have been unsuccessful and AQA will be happy to rectify any omissions of acknowledgements in future papers if notified.

Copyright © 2010 AQA and its licensors. All rights reserved.