



General Certificate of Secondary Education
Specimen Paper for Modular Specification 2013

GEOGRAPHY (SPECIFICATION A)

40304F & 40304H

Unit 4 Physical & Human Geography

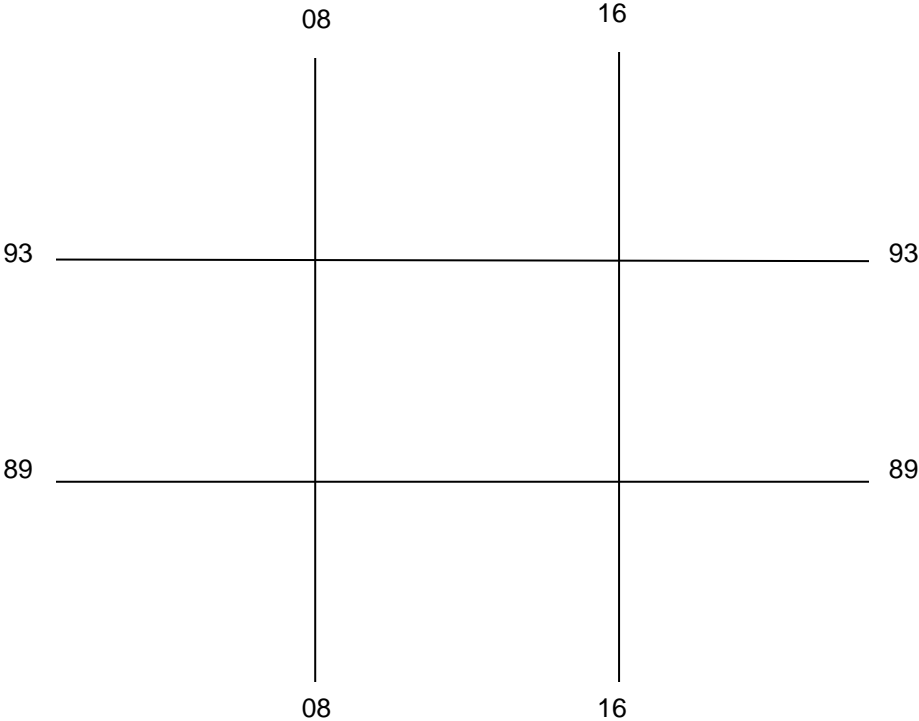
Insert

**For use with Question 2
Figure 3 Foundation Tier
Figure 3 Higher Tier**

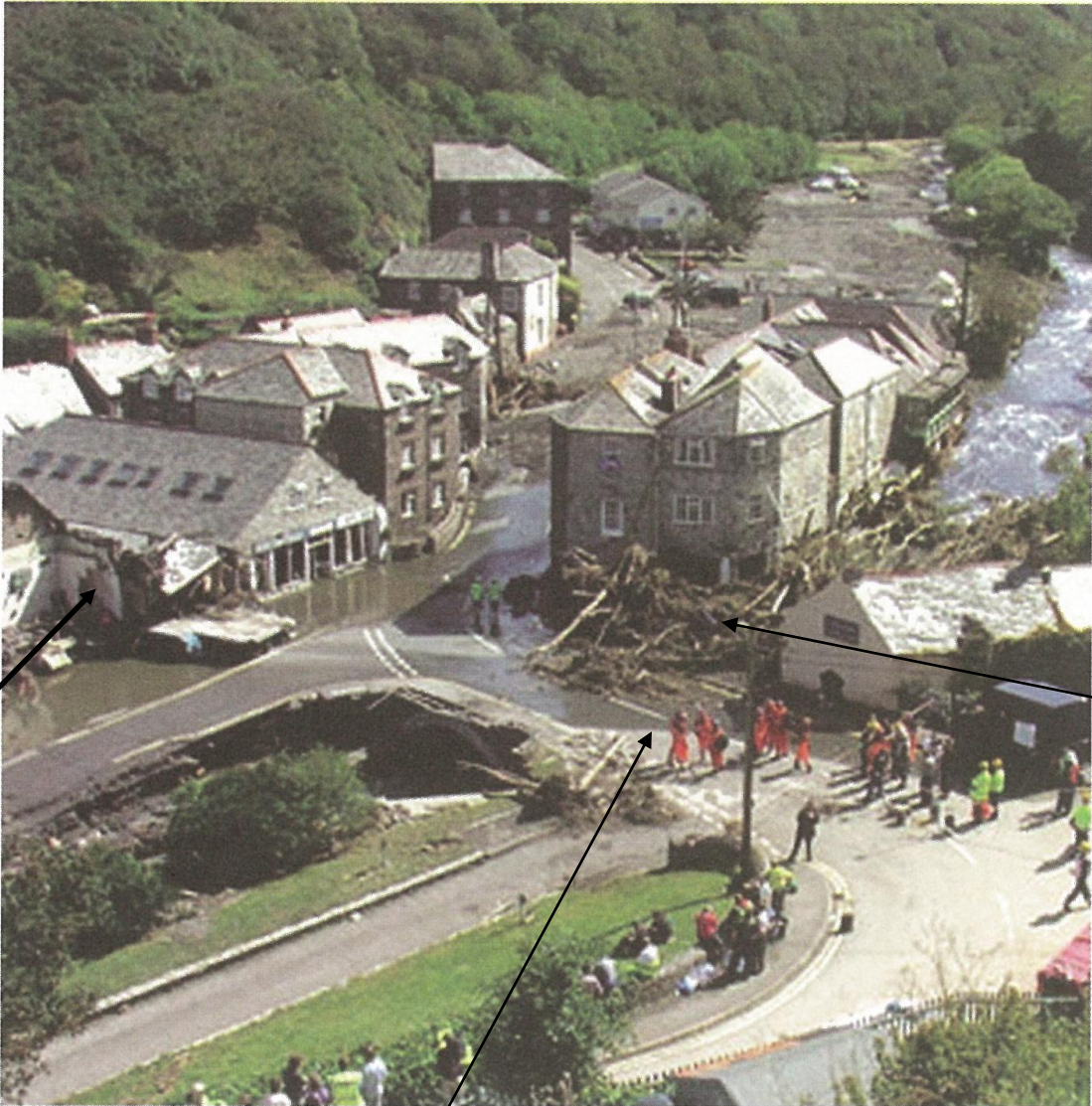
We are unable to reproduce the OS map extract used in this paper here due to third party copyright constraints.

The details of the map used are given below.

Extracted from OS Landranger Map 190 – Boscastle (1:50 000)



For use with Question 2
Figure 5 Foundation Tier
Figure 4 Higher Tier



Y

X

Z

Source: BBC Radio Cornwall

**For use with Question 3
Figure 7 Foundation Tier
Figure 6 Higher Tier**

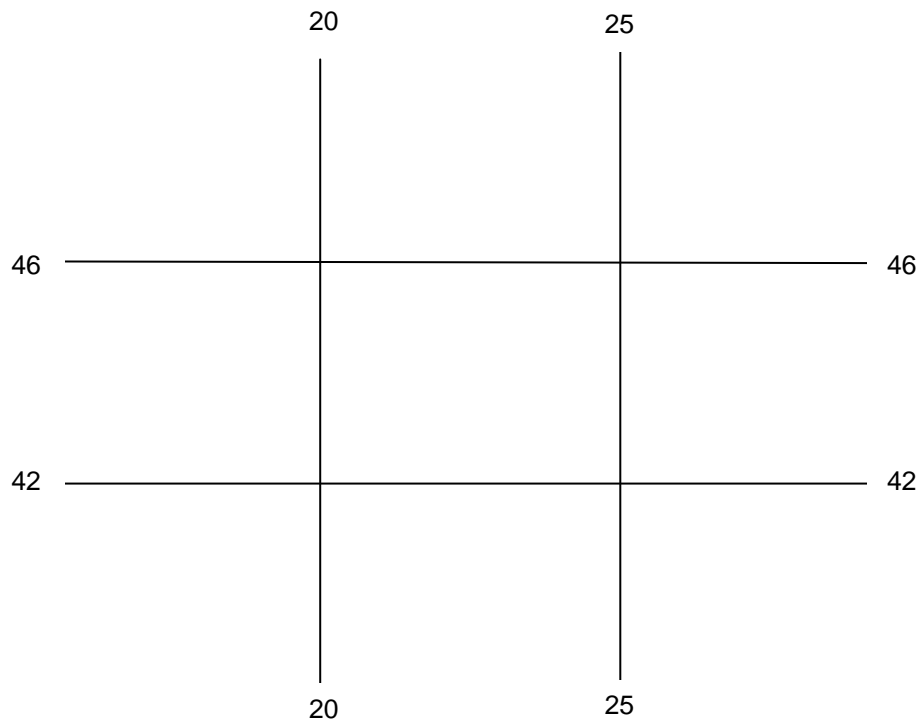


**For use with Question 3
Figure 9 Foundation Tier
Figure 7 Higher Tier**

We are unable to reproduce the OS map extract used in this paper here due to third party copyright constraints.

The details of the map used are given below.

Extracted from OS Landranger Map 107 – Mappleton, Yorkshire (1:50 000)



For use with Question 6
Figure 16 Foundation Tier
Figure 13 Higher Tier



ACKNOWLEDGEMENT OF COPYRIGHT-HOLDERS AND PUBLISHERS

Permission to reproduce all copyright material has been applied for. In some cases, efforts to contact copyright-holders have been unsuccessful and AQA will be happy to rectify any omissions of acknowledgements in future papers if notified.

Copyright © 2012 AQA and its licensors. All rights reserved.