



General Certificate of Secondary Education
Specimen Paper for Modular Specification 2013

GEOGRAPHY (SPECIFICATION A)

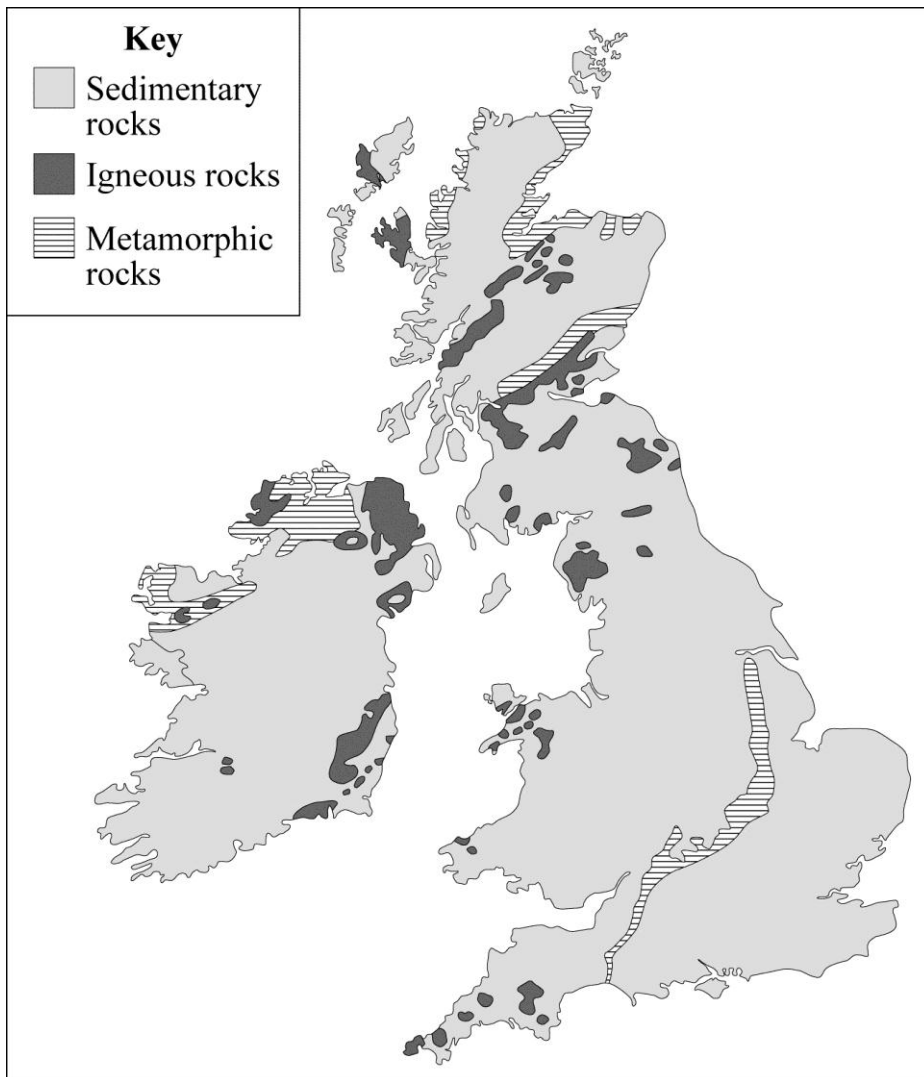
40301F & 40301H

Unit 1 Physical Geography

Insert

For use with Question 2

Figure 3



For use with Question 2
Figure 5



For use with Question 3
Figure 8

The day the River Don claimed the Don Valley for itself again

JUNE has been the Sheffield's wettest-ever month since records began 120 years ago.

The city has been deluged with 269mm of rain, compared with the previous record of 225mm, set in June 1982.

Curator of Earth Sciences at Weston Park weather centre, said the normal average for June was just 67mm.

Monday saw 50mm of rain fall across the city.

And 88mm fell steadily over a 24-hour period on Thursday, June 14.

Two died, workers were trapped in factories, families airlifted from their flooded flats, and others stacked furniture and baled out basements and cellars.

Now all is calm again.

Isolated figures walk down the middle of Saville Street through the sludge, torn up Tarmac, smashed pallets, road signs, fences bent double around bus-stops and abandoned cars.

Some are returning to their shops and restaurants with dread in their hearts.

Others *are* looking for the cars they were forced to abandon the night before.

Across the other side of town Hallam University became a makeshift hotel when the country's railway network was stopped by the storm.

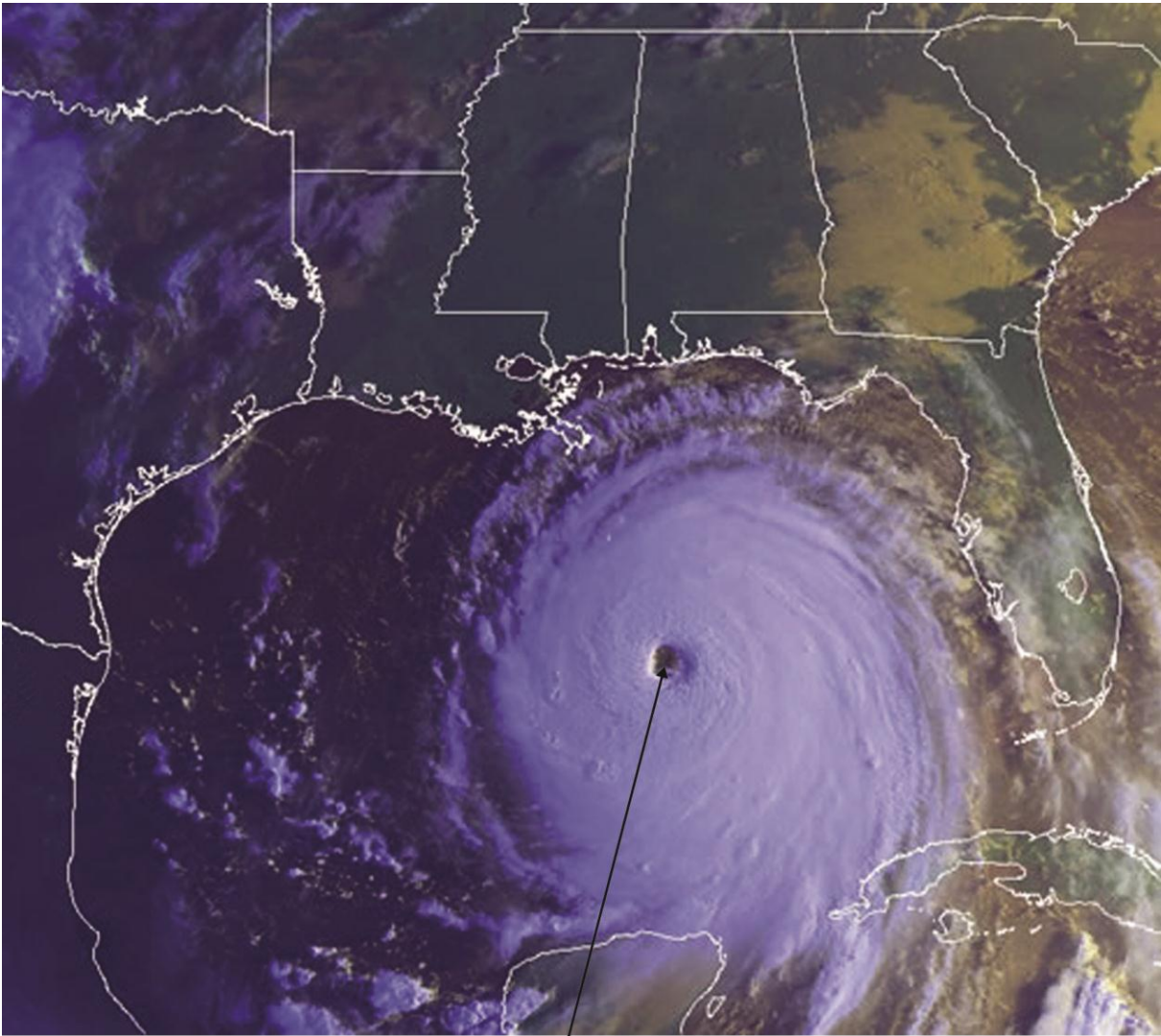
First class passengers stranded in Sheffield slept on the floor on mattresses alongside street drinkers brought in out of the rain.

They were fed and kept warm by a team of orange-jacketed volunteers.

"We have had around 350 people stay here overnight, mostly rail travellers who couldn't get to their destinations and Sheffield people who couldn't get out of the city to get home," said a volunteer.

"The university provided bedding and breakfast this morning and the WRVS provided drinks and food last night."

**For use with Question 3
Figure 9**



X

For use with Question 4
Figure 11 Foundation Tier
Figure 12 Higher Tier

A



B

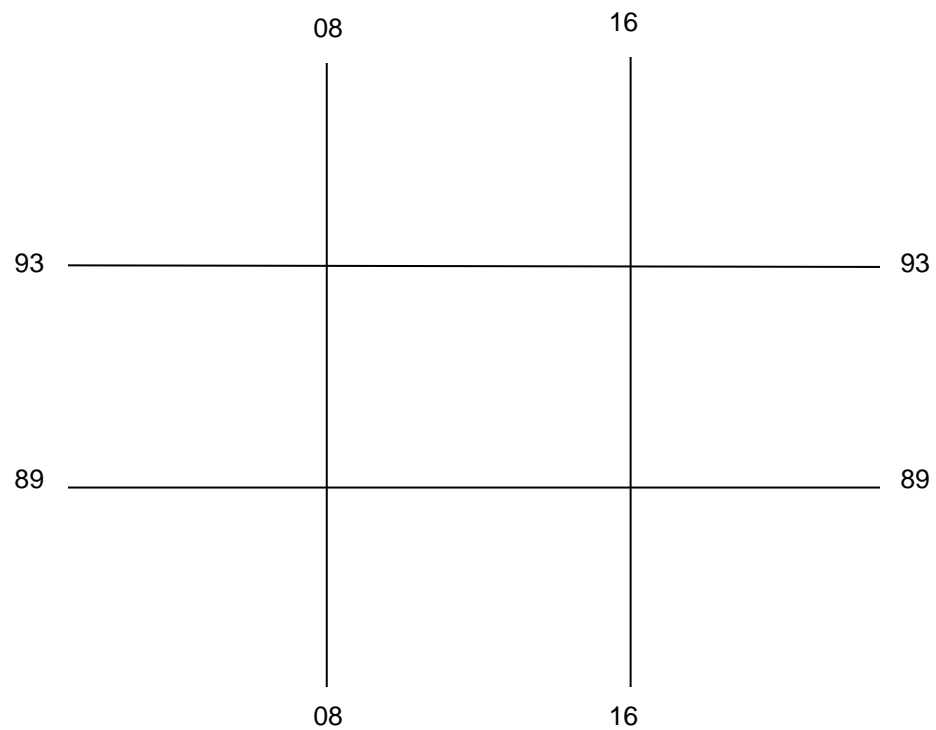


**For use with Question 5
Figure 12 Foundation Tier
Figure 13 Higher Tier**

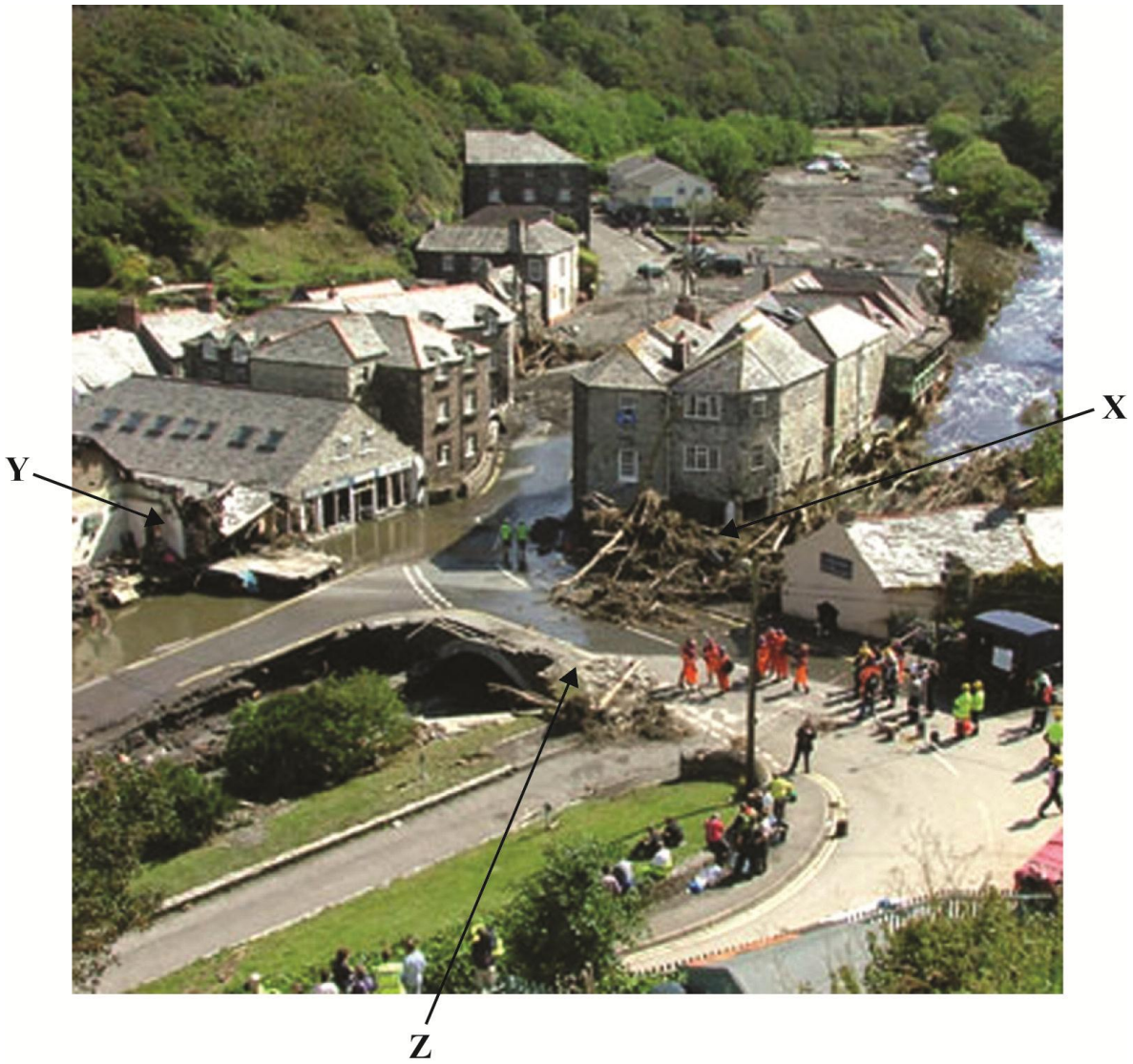
We are unable to reproduce the OS map extract used in this paper here due to third party copyright constraints.

The details of the map used are given below.

Extracted from OS Landranger Map 190 – Boscastle (1:50 000)



For use with Question 5
Figure 14

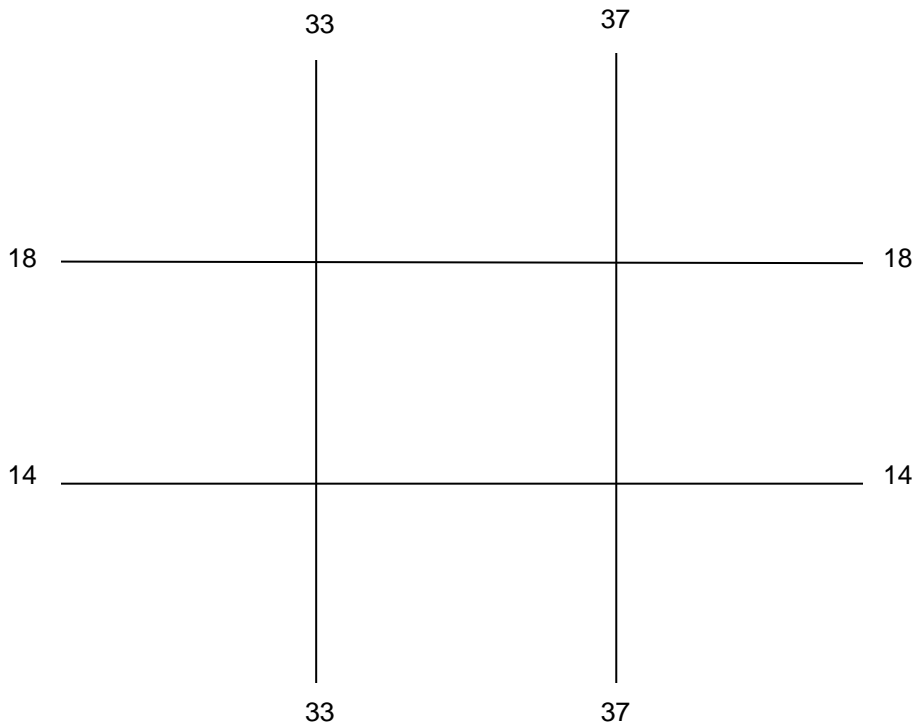


For use with Question 6
Figure 15 Foundation Tier
Figure 16 Higher Tier

We are unable to reproduce the OS map extract used in this paper here due to third party copyright constraints.

The details of the map used are given below.

Extracted from OS Explorer Map OL5 – Helvellyn, Lake District (1:25 000)



For use with Question 6
Figure 16 Foundation Tier
Figure 17 Higher Tier



For use with Question 6
Figure 17 Foundation Tier
Figure 19 Higher Tier



**For use with Question 7
Figure 19 Foundation Tier
Figure 20 Higher Tier**

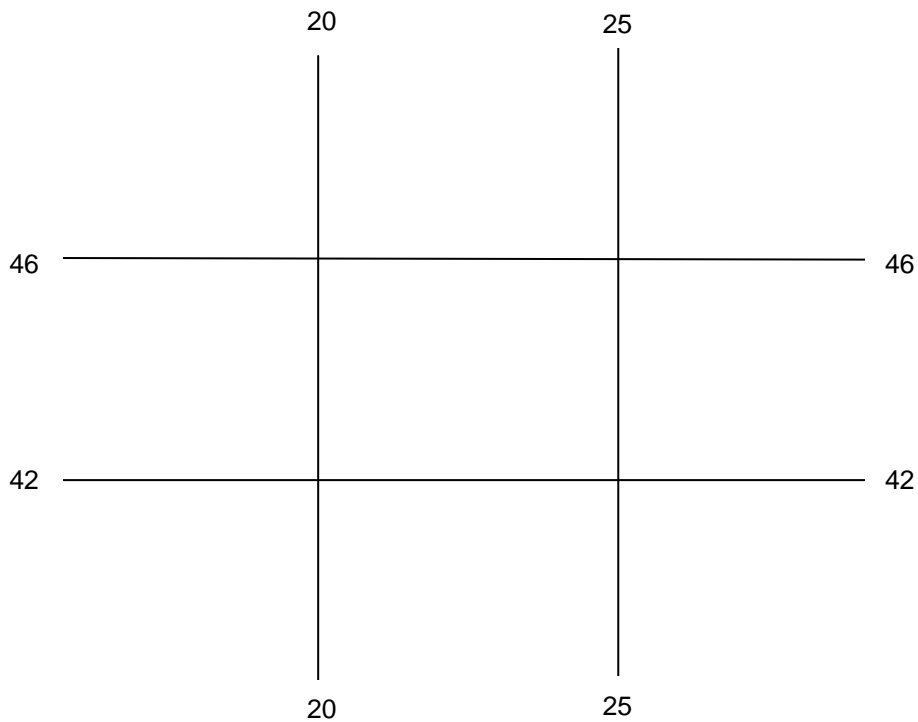


**For use with Question 7
Figure 21**

We are unable to reproduce the OS map extract used in this paper here due to third party copyright constraints.

The details of the map used are given below.

Extracted from OS Landranger Map 107 – Mappleton, Yorkshire (1:50 000)



ACKNOWLEDGEMENT OF COPYRIGHT-HOLDERS AND PUBLISHERS

Permission to reproduce all copyright material has been applied for. In some cases efforts to contact copyright-holders have been unsuccessful and AQA will be happy to rectify any omissions of acknowledgements in future papers if notified.

Copyright © 2012 AQA and its licensors. All rights reserved.