

Surname					Other Names				
Centre Number					Candidate Number				
Candidate Signature									

For Examiner's Use

General Certificate of Secondary Education
June 2008

GEOGRAPHY (SPECIFICATION C)
Paper 1
Higher Tier

3033/1H

H



Wednesday 4 June 2008 9.00 am to 10.30 am

For this paper you must have:

- the insert (enclosed)
- the Ordnance Survey map extract (enclosed).

You may use a calculator.

Time allowed: 1 hour 30 minutes

Instructions

- Use black ink or black ball-point pen. You may use pencil for maps, diagrams and graphs.
- Answer **all** questions.
- Fill in the boxes at the top of this page.
- You must answer the questions in the spaces provided. Answers written in the margins or on blank pages will not be marked.
- Use your case studies to support your answers where appropriate.
- Do **all** rough work in this book. Cross through any work you do not want to be marked.

Information

- The maximum mark for this paper is 60.
- The marks for questions are shown in brackets.
- You are reminded of the need for good English and clear presentation in your answers. All questions should be answered in continuous prose where appropriate. Quality of written communication will be assessed in all answers.
- LEDC is a Less Economically Developed Country.
- MEDC is a More Economically Developed Country.

For Examiner's Use			
Question	Mark	Question	Mark
1		5	
2			
3			
4			
Total (Column 1) →			
Total (Column 2) →			
TOTAL			
Examiner's Initials			



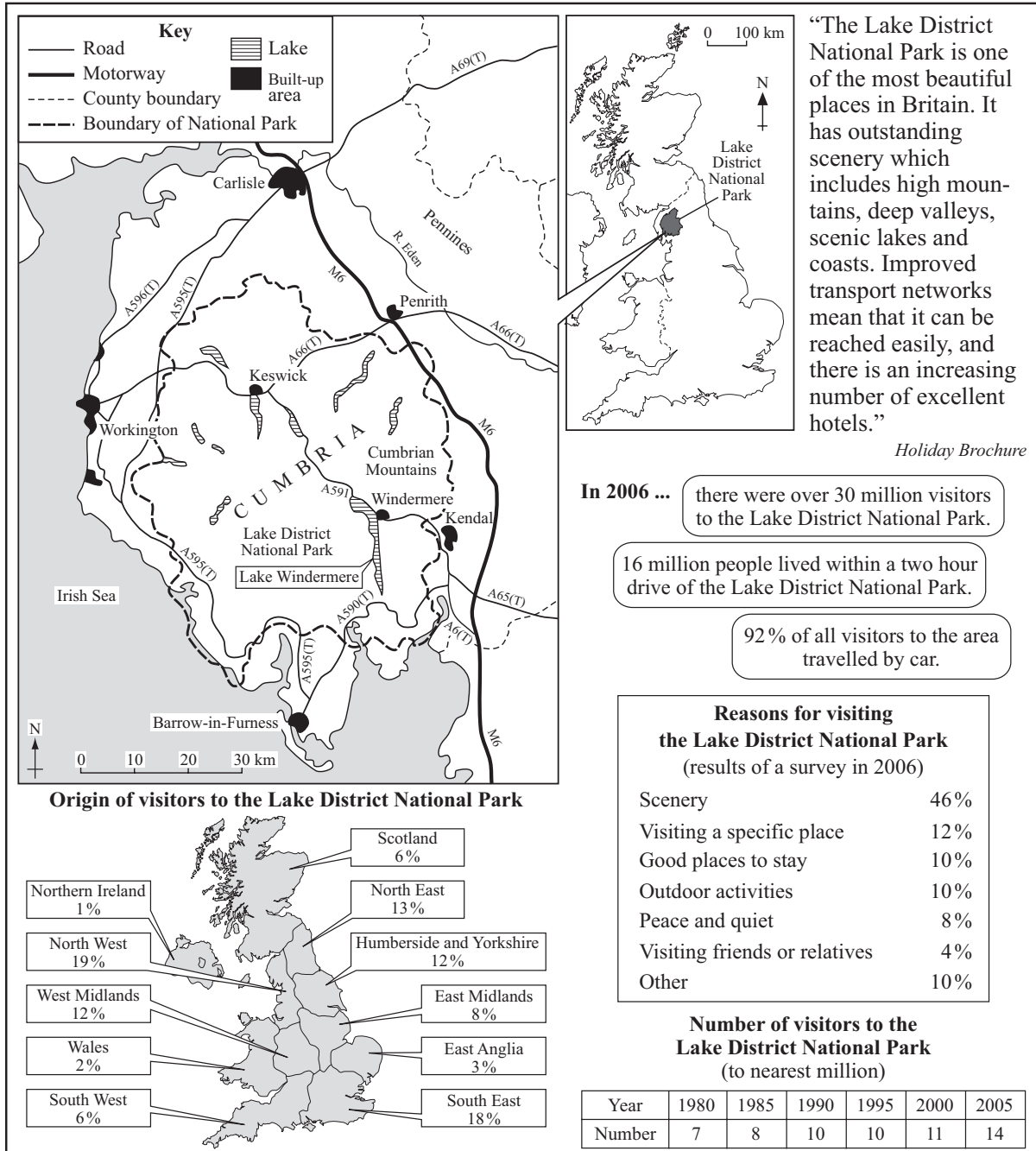
Answer **all** questions in the spaces provided.

Use your case studies to support your answers where appropriate.

Total for this question: 19 marks

1 Study Figure 1 which shows information about the Lake District National Park.

Figure 1



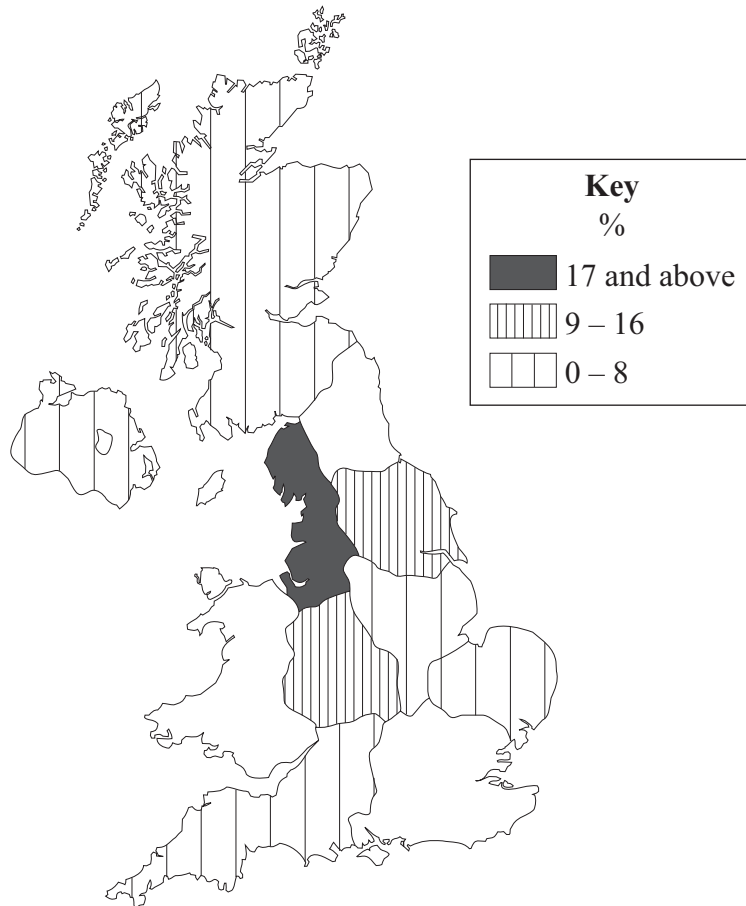
1 (a) (i) In which county is the Lake District?

.....
(1 mark)

1 (a) (ii) Which motorway runs past the Lake District National Park?

.....
(1 mark)

1 (b) (i) Complete the map below to show the origin of visitors to the Lake District National Park.



(3 marks)

Question 1 continues on the next page

Turn over ►



1 (d) (i) Describe the rate of increase in visitor numbers to the Lake District National Park from 1980 to 2005 as shown in **Figure 1**.

.....
.....
.....
.....

(2 marks)

1 (d) (ii) Using **Figure 1** and your own knowledge, suggest why the number of people visiting National Parks has increased.

.....
.....
.....
.....
.....
.....
.....
.....
.....

(4 marks)

(Extra space)

.....
.....
.....

Turn over for the next question

Turn over ►



Total for this question: 10 marks

2 Study **Figure 2**, on the insert, a photograph showing part of a National Park in England.

2 (a) Suggest how the physical and human features of the landscape in **Figure 2** might attract visitors.

.....

.....

.....

.....

.....

.....

.....

.....

.....

.....

.....

.....

.....

.....

.....

.....

.....

.....

.....

.....

.....

.....

.....

(6 marks)

(Extra space)

.....

.....

.....

.....

.....



2 (b) Describe the problems caused by the increased number of people using footpaths within National Parks.

.....

.....

.....

.....

.....

.....

.....

.....

.....

(4 marks)

(Extra space)

.....

.....

.....

10

Turn over for the next question

Turn over ►



Total for this question: 12 marks

3 Study **Figure 3**, the Ordnance Survey map extract, which shows part of Lake Windermere in the Lake District National Park.

3 (a) (i) Give the six-figure grid reference for Windermere railway station.

.....
(1 mark)

3 (a) (ii) What is the size of the area covered by the map extract?

.....
(2 marks)

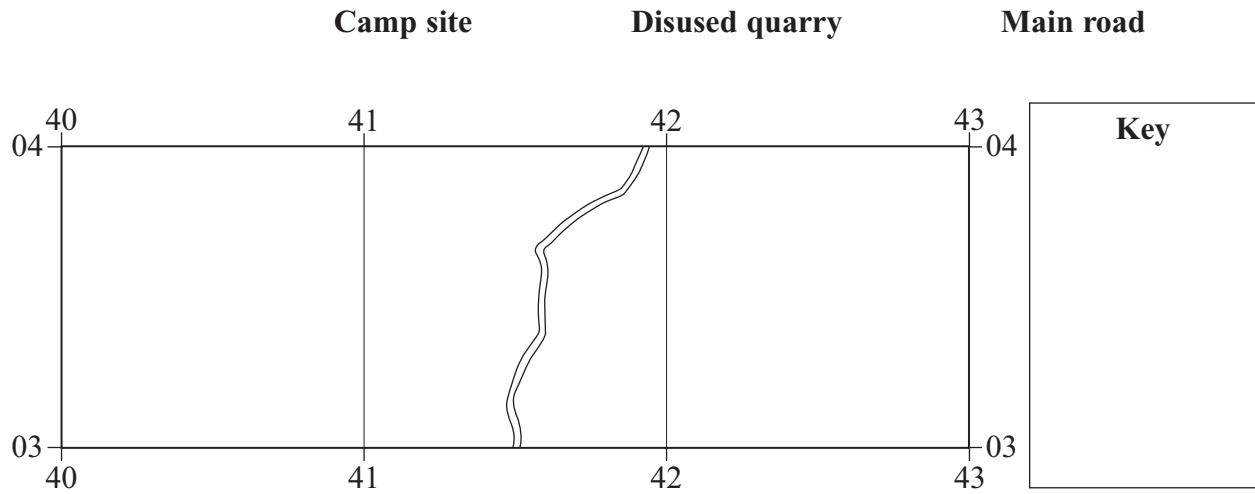
3 (a) (iii) What is the straight line distance to the nearest km from the car park at Waterhead (376034) to Windermere railway station?

.....
(1 mark)



3 (b) Using **Figure 3**, the Ordnance Survey map extract:

3 (b) (i) add the following features to the grid below and then complete the key.



(4 marks)

3 (b) (ii) describe the physical features in the three grid squares shown above.

.....

.....

.....

.....

.....

.....

.....

.....

.....

.....

(4 marks)

(Extra space)

.....

.....

.....



Total for this question: 8 marks

4 Study **Figure 4**, 'The impact of tourism around Lake Windermere'.

Figure 4

The impact of tourism around Lake Windermere

Lake Windermere is a honeypot site in the Lake District National Park. It attracts millions of visitors each year, mainly in the summer.

The following comments are from people who live in the area.



Estate agent

Nearly 20% of houses in the area are holiday homes. This is good for local business and keeps the property prices high.

Most of the shops in our local towns are now tourist shops or cafés. Lots of new buildings and car parks are linked to tourism. These things have changed the character of the area. In the summer months it gets very crowded in my local town.



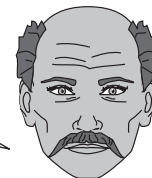
Local resident



Local shopkeeper

Visitors spend lots of money in local shops and use local services. I employ three extra seasonal shop assistants during the summer months.

Money brought in by tourists can be used for conservation projects. However, the large number of visitors in the summer can make it difficult for local people to go about their daily business.



Park ranger

Facts

In 2006:

- half of all local residents were dependent on tourism for employment
- the money spent in the Lake District National Park by tourists was estimated at £600 million.



.....

.....

.....

.....

.....

.....

.....

(9 marks)

(Extra space)

.....

.....

.....

.....

.....

.....

END OF QUESTIONS

11



There are no questions printed on this page

**DO NOT WRITE ON THIS PAGE
ANSWER IN THE SPACES PROVIDED**



There are no questions printed on this page

**DO NOT WRITE ON THIS PAGE
ANSWER IN THE SPACES PROVIDED**



There are no questions printed on this page

**DO NOT WRITE ON THIS PAGE
ANSWER IN THE SPACES PROVIDED**

ACKNOWLEDGEMENT OF COPYRIGHT-HOLDERS AND PUBLISHERS

Permission to reproduce all copyright material has been applied for. In some cases, efforts to contact copyright-holders have been unsuccessful and AQA will be happy to rectify any omissions of acknowledgements in future papers if notified.

Copyright © 2008 AQA and its licensors. All rights reserved.



General Certificate of Secondary Education
June 2008

GEOGRAPHY (SPECIFICATION C)
Paper 1
Foundation and Higher Tiers

3033/1F
3033/1H



Insert

For use with Questions 2 and 3

Figure 2

The photograph cannot be reproduced here due to third-party copyright constraints.

ACKNOWLEDGEMENT OF COPYRIGHT-HOLDERS AND PUBLISHERS

Permission to reproduce all copyright material has been applied for. In some cases, efforts to contact copyright-holders have been unsuccessful and AQA will be happy to rectify any omissions of acknowledgements in future papers if notified.

Figure 2: The Ramblers' Association, *The Observer*, 26 March 2007.

Figure 5: Your guide to Windermere, Lake District National Park Authority. www.lake.district.gov.uk

Figure 5

Views about the speed restrictions on Lake Windermere

Less speed – and fewer visitors?

Six months after the introduction of a speed ban on Lake Windermere the water-skiers, powerboat owners and the jet skis may have gone – but so has all the money that they used to bring to the area.

A local restaurant manager said, “We have had a massive drop in trade – speed boat owners used to spend a lot of money in local shops and restaurants and now most of them go elsewhere.”

The director of the local tourist agency said, “The local area will lose about £6 million this year – much more than expected. There will be far fewer tourist related jobs in the future. However, there has been an increase in other types of visitors, such as sailors, hikers and people who enjoy the wonderful scenery and peace and quiet.”

Has the speed limit affected local business?

Local hotel owners reported mixed fortunes with some doing well while others have far fewer visitors. One hotel owner said, “We have two hotels; in one the number of visitors is about the same as last year, while in the other one we have very few guests. Generally food trade has been about the same as in previous years.” However, another local hotel manager said, “Yes, trade is certainly down this year, but it could be due to other factors like the weather. We will need to see what happens over the next couple of years.”

Results of a business survey in 2005

- 53% of all tourism businesses said that a fall in income was due to the new speed limit.
- 17% of businesses said that they were reducing orders from other local businesses.
- 5% of businesses said that the new speed limit had increased trade.

600 surveys issued – 113 returned

What do people think about the issue?

The noise of speed boats is similar to that of a motor racing circuit



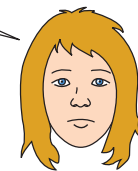
An angler

My family have been visiting the area for years. We spend about £4000 a year in the local area on boat moorings, hotel bills and in local shops.



A speed boat owner

I don't see what all the fuss is about. Speed boat owners are only a small proportion of visitors. If they stop coming, larger numbers of people looking for a peaceful holiday will come.

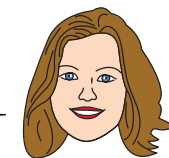


A restaurant owner



A local shopkeeper

Trade is down at the moment, but the speed boats did cause problems on busy weekends. There must be other ways to manage the area so everyone is happy.



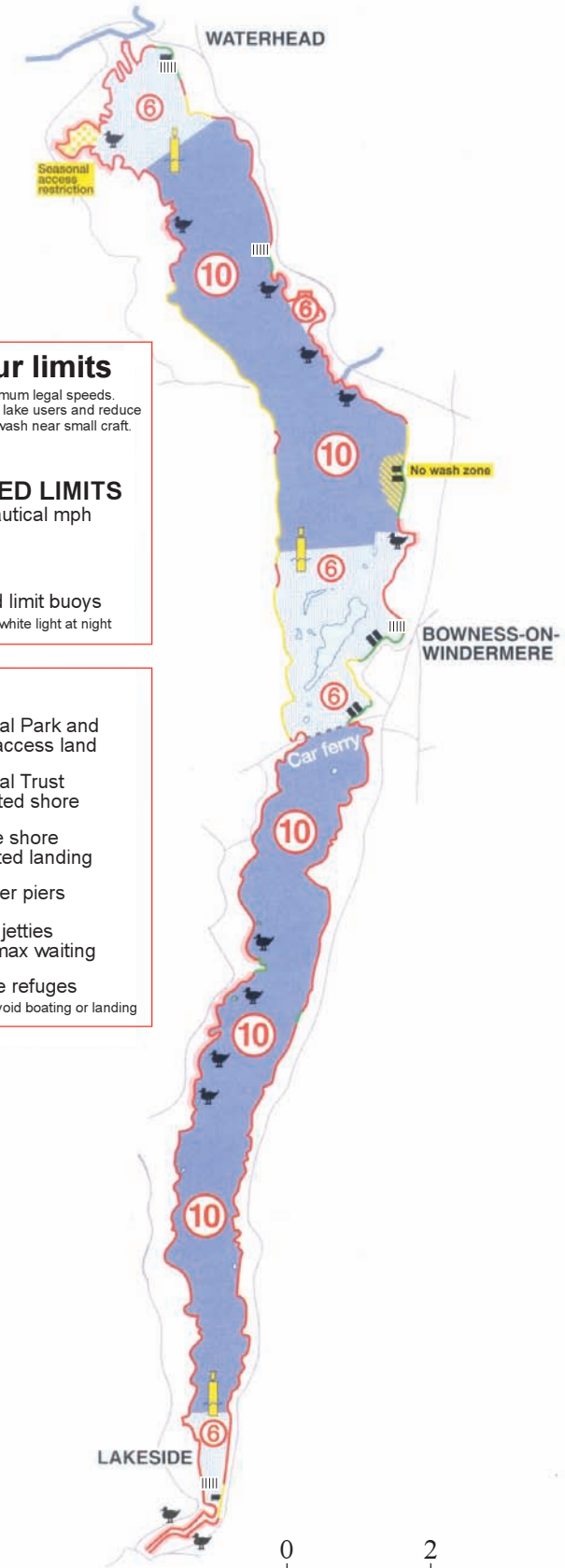
A Hiker

The place is so much more peaceful now and more wildlife is evident. The lake looks cleaner and there is less erosion of the banks.

Survey of use of Lake Windermere since the speed limit

Type of boat	Change
Speed boat	-57%
Water skier/boat	-87%
Sailing boat	+47%
Canoe	+170%
Rowing boat	+138%

The Speed Restrictions on Lake Windermere



Know your limits
Speed limits are maximum legal speeds. Please consider other lake users and reduce your speed and your wash near small craft.

6 **SPEED LIMITS**
Nautical mph

10

Speed limit buoys flashing white light at night

KEY

- National Park and other access land
- National Trust protected shore
- Private shore restricted landing
- Steamer piers
- Public jetties 2 hrs max waiting
- Wildlife refuges please avoid boating or landing

0 2 4 km