

Surname						Other Names					
Centre Number						Candidate Number					
Candidate Signature											

For Examiner's Use

General Certificate of Secondary Education
June 2007

GEOGRAPHY (SPECIFICATION C)
Paper 1
Foundation Tier

3033/1F

F



Monday 4 June 2007 9.00 am to 10.30 am

<p>For this paper you must have:</p> <ul style="list-style-type: none"> a resource booklet (enclosed). <p>You may use a calculator.</p>

Time allowed: 1 hour 30 minutes

Instructions

- Use blue or black ink or ball-point pen. You may use pencil for maps, diagrams and graphs.
- Fill in the boxes at the top of this page.
- Answer **all** questions.
- Answer the questions in the spaces provided.
- Use your case studies to support your answers where appropriate.
- Do all rough work in this book. Cross through any work you do not want to be marked.

Information

- The maximum mark for this paper is 60.
- The marks for questions are shown in brackets.
- You will be marked on your ability to use an appropriate form and style of writing, to organise relevant information clearly and coherently, and to use specialist vocabulary where appropriate. The legibility of your handwriting and the accuracy of your spelling, punctuation and grammar will also be considered.
- LEDC is a Less Economically Developed Country.
- MEDC is a More Economically Developed Country.

For Examiner's Use			
Question	Mark	Question	Mark
1		5	
2		6	
3			
4			
Total (Column 1)		→	
Total (Column 2)		→	
TOTAL			
Examiner's Initials			



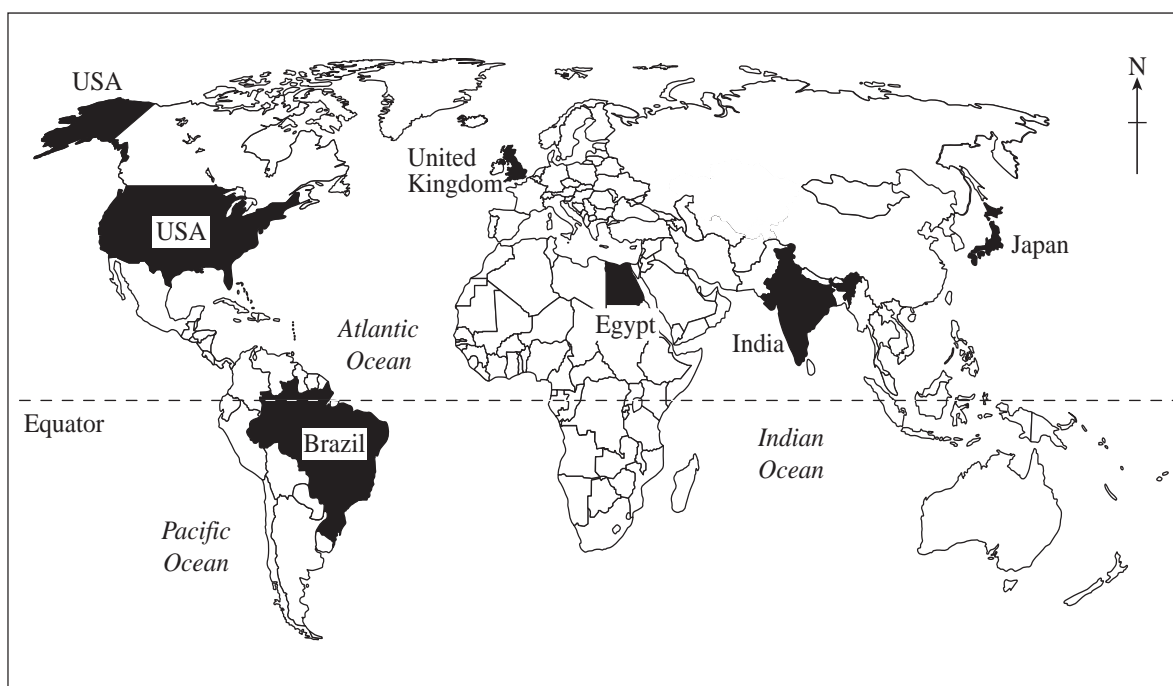
Answer **all** questions in the spaces provided.

Use your case studies to support your answers where appropriate.

Total for this question: 14 marks

1 Study **Figure 1** which shows indicators of the quality of life in six countries.

Figure 1



Indicators of Quality of Life	USA	Brazil	United Kingdom	Egypt	India	Japan
GNP per person (US \$ per year)	37 800	2 720	28 320	1 360	540	34 200
Infant mortality (per 1000)	8	34	6	32	64	2
Number of people per doctor	426	875	610	1 380	2 450	580
Adult literacy (%)	97	88	99	69	68	99
Life expectancy (in years)	77	69	77	68	63	82



- (a) (i) Which country in **Figure 1** has:
 the highest level of infant mortality?
 the lowest number of people per doctor?
 (2 marks)

- (ii) Read the following statements carefully.
 Tick the correct box for each statement to show if the statement is **true** or **false**.

	True	False
The adult literacy rate is the % of the population who can read and write.	<input type="checkbox"/>	<input type="checkbox"/>
GNP per person US \$ is a measure of average wealth.	<input type="checkbox"/>	<input type="checkbox"/>
Countries with more people per doctor usually have lower rates of infant mortality.	<input type="checkbox"/>	<input type="checkbox"/>

(3 marks)

- (b) (i) Complete the table below which shows whether each of the countries in **Figure 1** is a More Economically Developed Country (MEDC) or a Less Economically Developed Country (LEDC).

COUNTRY	MEDC or LEDC
USA	
BRAZIL	LEDC
UK	MEDC
EGYPT	
INDIA	
JAPAN	MEDC

(3 marks)

Question 1 continues on the next page

Turn over ►



(ii) Explain how the indicators shown in **Figure 1** suggest that Japan is an MEDC.

.....

.....

.....

.....

.....

.....

.....

.....

.....

(4 marks)

(c) Suggest **two** indicators, other than those in **Figure 1**, that could be used to compare the quality of life between countries.

1

.....

2

.....

(2 marks)



Turn over for the next question

Turn over ►



Total for this question: 12 marks

- 2 Study **Figure 2** which shows the employment structure of two of the countries shown in **Figure 1**.

Figure 2

EMPLOYMENT STRUCTURE (%)	JAPAN	INDIA
Primary	6	60
Secondary	32	18
Tertiary	62	22

- (a) Complete the paragraph below by choosing the correct words from the list in the box.

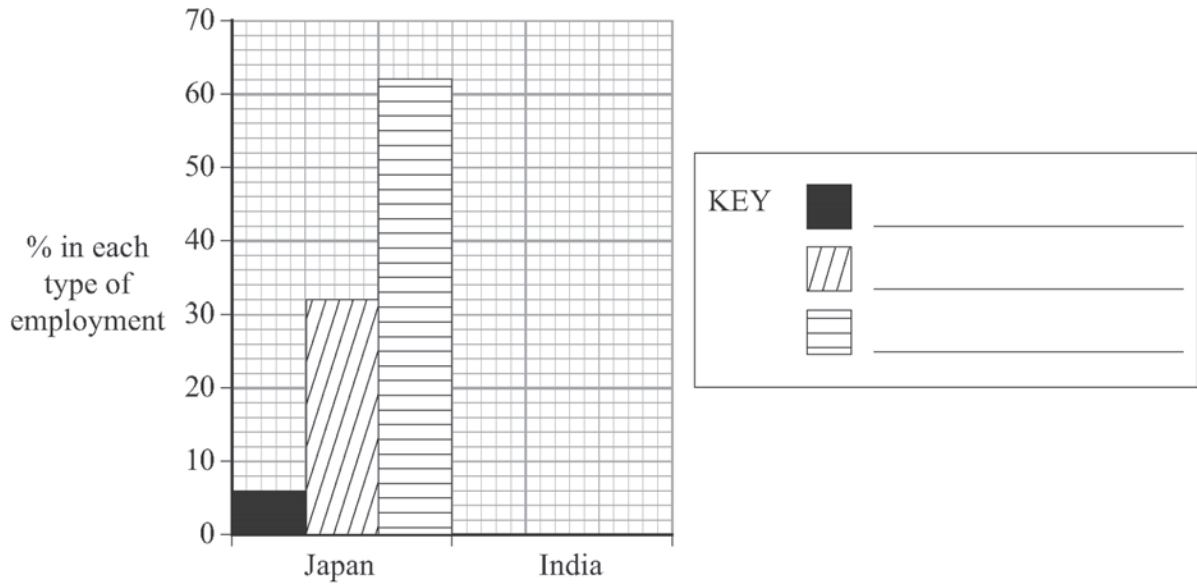
services	products	health care
farming	raw materials	

Primary industries, such as mining, fishing and are concerned with obtaining Secondary industries make from raw materials. Tertiary industries provide for people. Examples of tertiary activities include tourism, and education.

(4 marks)



(b) Using **Figure 2**, complete the graph and key below.



(4 marks)

(c) Suggest why India has a much higher percentage of people employed in primary industry than Japan.

.....

.....

.....

.....

.....

.....

.....

.....

.....

(4 marks)

Turn over for the next question

Turn over ►



Total for this question: 7 marks

- 3 (a) **Figure 3** describes four approaches used by LEDCs to increase their levels of wealth.

Complete **Figure 3** by putting each of the following labels in the correct box.

aid

tourism

technology

fair trade

Figure 3



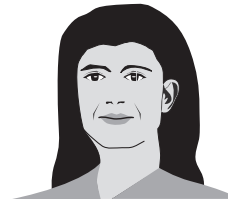
We have a fantastic climate and need to encourage more visitors.



We need to be able to make products more efficiently.



We want more money for our products.



We need help from other governments and organisations such as Oxfam.

(3 marks)



(b) Explain how **one** of the four approaches, **other than tourism**, might help to improve the quality of life of people living in LEDCs.

.....

.....

.....

.....

.....

.....

.....

.....

.....

(4 marks)

7

Turn over for the next question

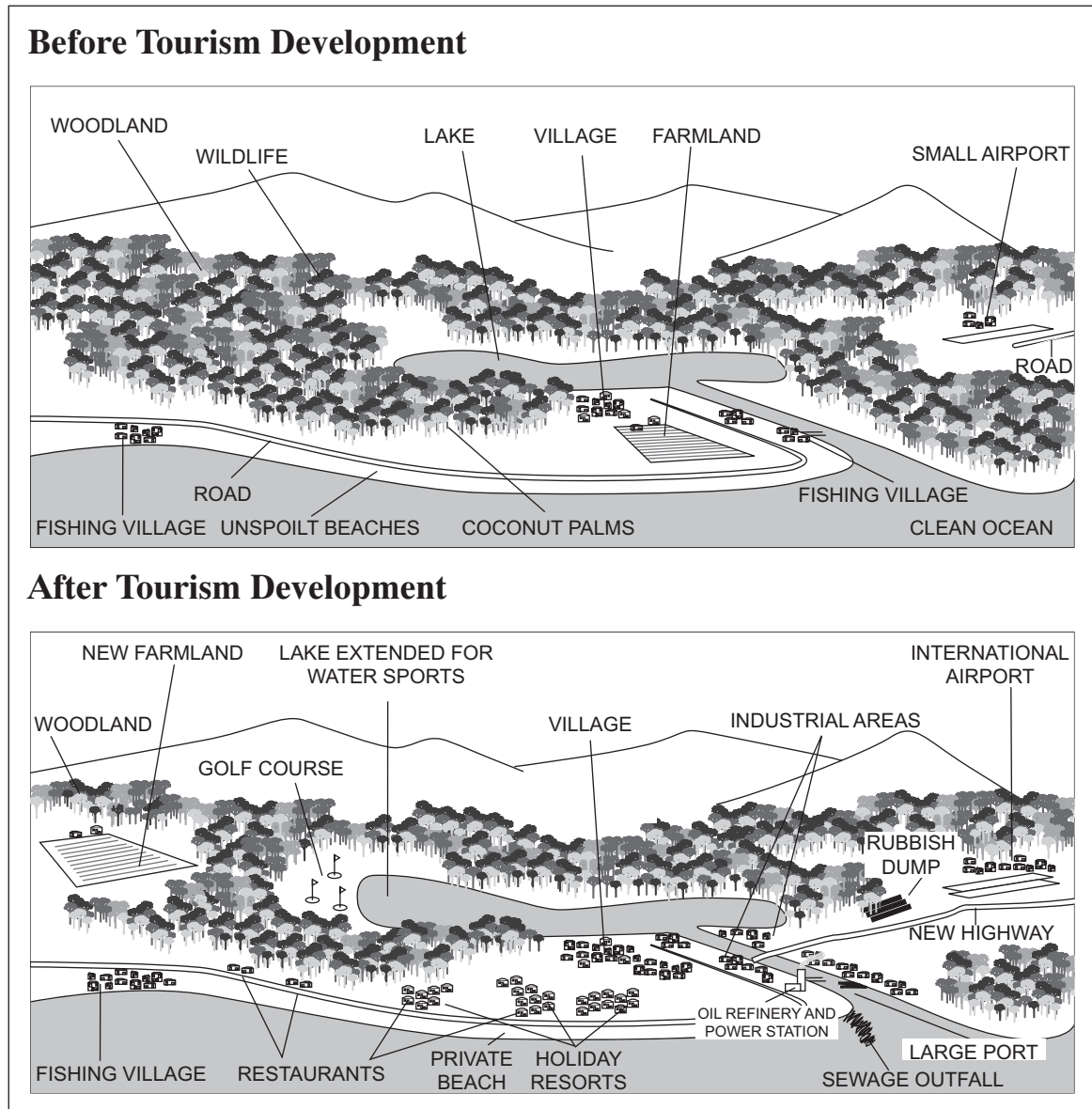
Turn over ►



Total for this question: 4 marks

- 4 Tourism is often used as a way of increasing wealth in LEDCs.
Study **Figure 4** which shows the possible effects of tourism in LEDCs.

Figure 4



With the help of **Figure 4**, describe the possible effects of tourism development on the environment in LEDCs.

.....

.....

.....

.....

.....

.....

.....

.....

(4 marks)

4

Turn over for the next question

Turn over ►



Total for this question: 13 marks

5 Study **Figure 5** in the resource booklet, an advertising leaflet for tourism in Brazil.

(a) (i) What is the length of the coastline of Brazil?

.....
(1 mark)

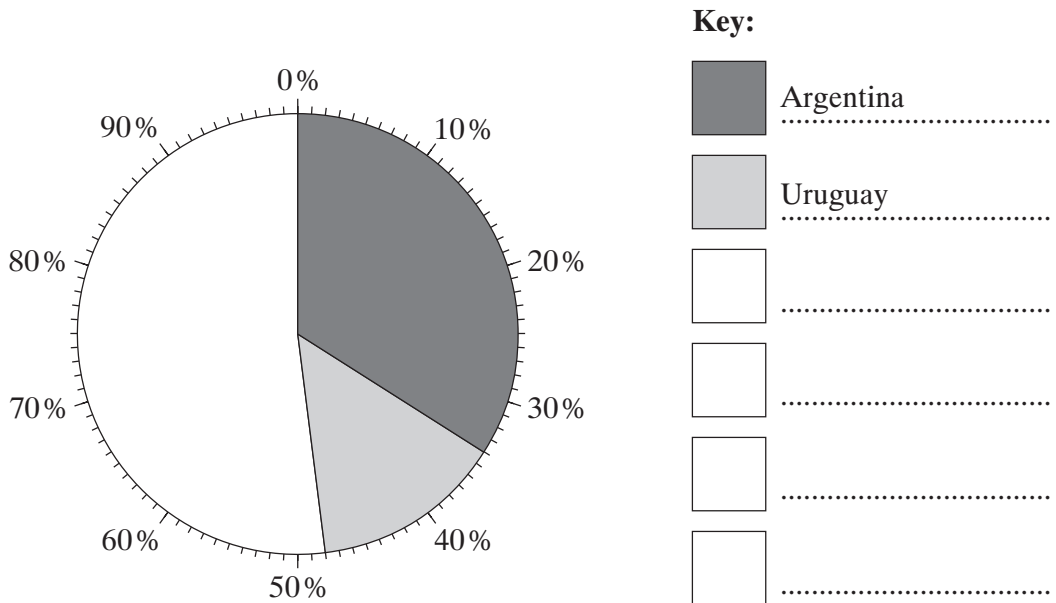
(ii) Which month has the highest rainfall in Salvador?

.....
(1 mark)

(iii) What proportion of the world's plant and animal species is found in the Amazon rain forest?

.....
(1 mark)

(b) (i) Use the information from **Figure 5** to complete the diagram and key below to show where visitors to Brazil come from.



(4 marks)



(ii) Suggest why so many visitors to Brazil come from Argentina.

.....
.....
.....
.....

(2 marks)

(c) Explain why the natural environment attracts visitors to Brazil.

.....
.....
.....
.....
.....
.....
.....
.....
.....

(4 marks)

Turn over for the next question

Turn over ►



(b) Suggest what could be done to reduce any problems caused by tourism development in Bahia.

.....

.....

.....

.....

.....

.....

.....

.....

(4 marks)

10

END OF QUESTIONS



There are no questions printed on this page

ACKNOWLEDGEMENT OF COPYRIGHT-HOLDERS AND PUBLISHERS

Permission to reproduce all copyright material has been applied for. In some cases, efforts to contact copyright-holders have been unsuccessful and AQA will be happy to rectify any omissions of acknowledgements in future papers if notified.

Figure 5: Amazonia photograph © Embassy of Brazil, Bahia photograph © Sue Cunningham, Rio de Janeiro and Iguaçu Falls © Sunvil Latin America.

Copyright © 2007 AQA and its licensors. All rights reserved.



0 1 6