

Answer **all** questions in the spaces provided.

1 MANAGING CHANGE IN THE HUMAN ENVIRONMENT

(a) Study **Figure 1** which shows information about population change in some large cities.

	City	Country	Population (1995) (millions)	Population estimate (2015) (millions)
LEDC	Mumbai (Bombay)	India	15	26
	Cairo	Egypt	7	15
	Jakarta	Indonesia	9	14
	Karachi	Pakistan	10	19
	Lagos	Nigeria	10	25
	Manila	Philippines	9	15
MEDC	Moscow	Russian Federation	9	10
	New York	USA	16	18
	Osaka	Japan	11	12
	Paris	France	9	9

Figure 1

Compare the estimated population changes of LEDC cities with those of MEDC cities.

.....

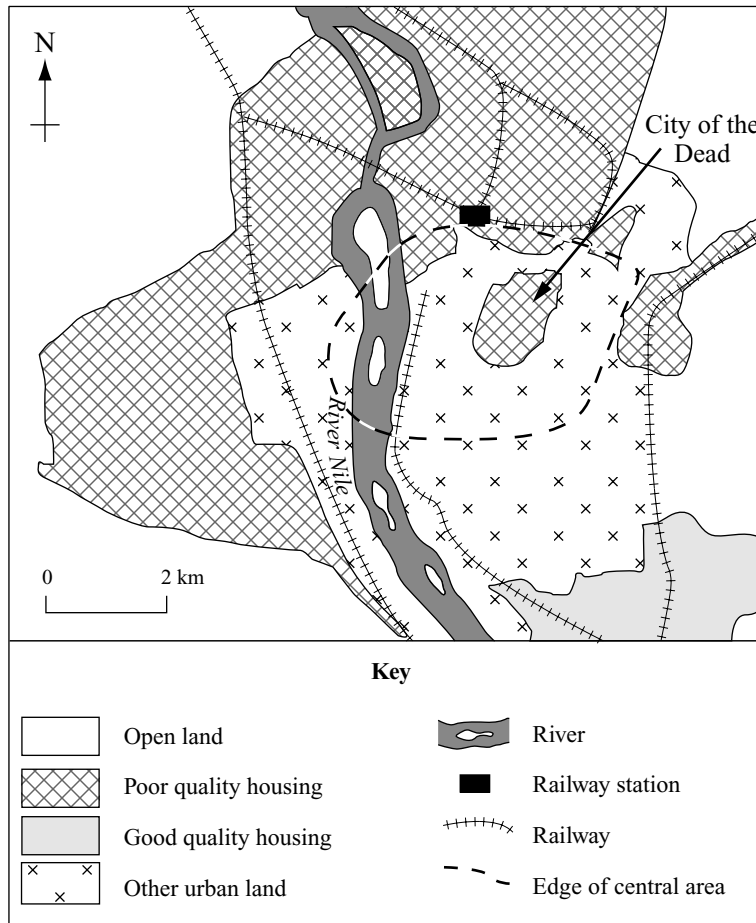
.....

.....

.....

(2 marks)

- (b) Study **Figure 2**, which shows housing areas in Cairo, a city in an LEDC.



Up to half a million people live in the 'City of the Dead' in the central area of Cairo. The 'City of the Dead' is a former cemetery, where people live in tombs and buildings. It lacks water supply and other basic services. 'Roof top slums' have formed as new storeys are added to existing buildings near to the central area. Shanty towns have developed around the edge of the city; these are areas of poor quality housing without water or electricity.

Figure 2

- (i) What direction is the area of good quality housing from the railway station?

.....
(1 mark)

QUESTION 1 CONTINUES ON THE NEXT PAGE

Turn over ►

(ii) Explain why people move from the countryside into shanty towns in LEDC cities such as Cairo.

.....

.....

.....

.....

.....

.....

.....

.....

.....

(4 marks)

(c) What is being done to reduce problems in shanty towns in LEDC cities? Refer to a scheme(s) that you have studied.

.....

.....

.....

.....

.....

.....

.....

.....

.....

.....

.....

.....

.....

.....

.....

.....

(6 marks)

- (d) Study **Figure 3**, which gives information about a proposed new development near Stevenage in the UK.

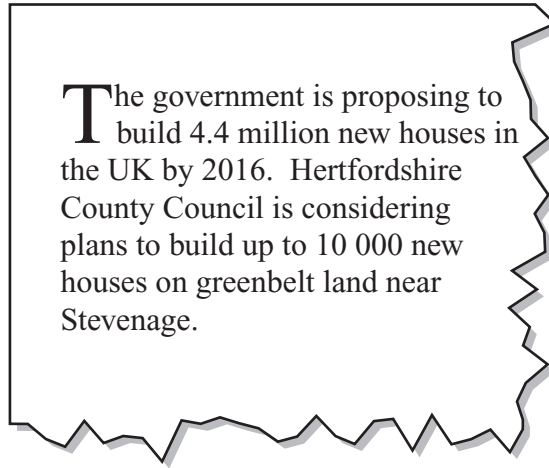


Figure 3

- (i) What is the purpose of ‘greenbelt’?

.....

.....

.....

.....

(2 marks)

- (ii) Suggest reasons why it is thought 4.4 million new houses will be needed by 2016.

.....

.....

.....

.....

.....

.....

(3 marks)

QUESTION 1 CONTINUES ON THE NEXT PAGE

Turn over ►

(e) Study **Figure 4**, on the insert, which shows a proposed new development near Stevenage in the UK.

(i) Describe the land-use of the area in which the proposed new development would be built.

.....

.....

.....

.....

.....

.....

.....

(3 marks)

2 MANAGING THE PHYSICAL ENVIRONMENT

(a) Study **Figure 5** which shows populations without a regular food supply in the Sahel region of Africa.

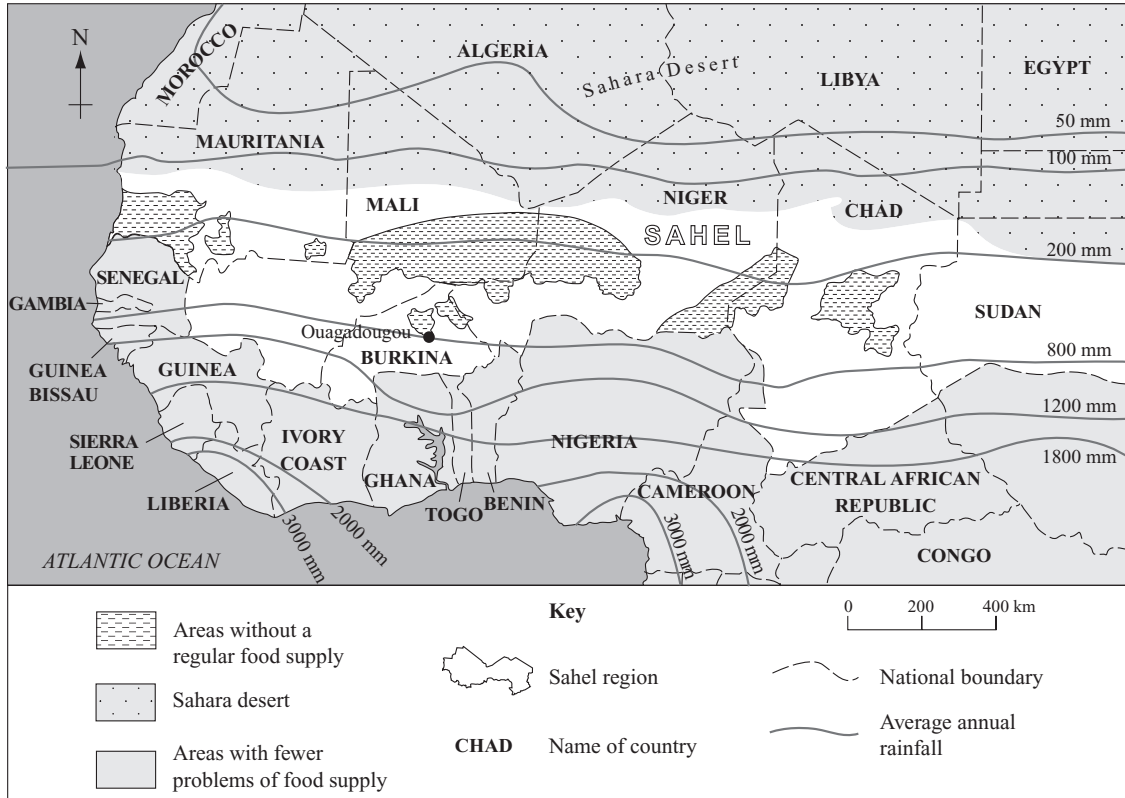


Figure 5

Using evidence from **Figure 5**, describe the relationship between the average annual rainfall and the lack of regular food supply in the Sahel region.

.....

.....

.....

.....

.....

.....

(3 marks)

(b) The Sahel region is an example of an area which suffers from desertification. Explain how desertification may occur. You may use a diagram.

.....

.....

.....

.....

.....

.....

.....

.....

.....

.....

.....

.....

.....

.....

.....

.....

(6 marks)

QUESTION 2 CONTINUES ON THE NEXT PAGE

Turn over ►

- (c) Study **Figure 6**, on the insert, which shows a satellite image of the area around Nyiragongo volcano in the Republic of Congo in 2002.

Describe the paths taken by the lava flows as shown on the satellite image.

.....

.....

.....

.....

.....

.....

(3 marks)

- (d) Despite the risks, people choose to live in volcanic areas such as that shown on the satellite image. Suggest reasons why.

.....

.....

.....

.....

(2 marks)

(e) Describe ways in which the damaging effects of a volcanic eruption may be reduced.

.....

.....

.....

.....

.....

.....

.....

.....

.....

.....

.....

.....

.....

.....

.....

.....

(6 marks)

20

TURN OVER FOR THE NEXT QUESTION

Turn over ►

3 MANAGING ECONOMIC DEVELOPMENT

(a) Study **Figure 7** which shows life expectancy in the countries of the world. Life expectancy is the number of years, on average, which people are expected to live.

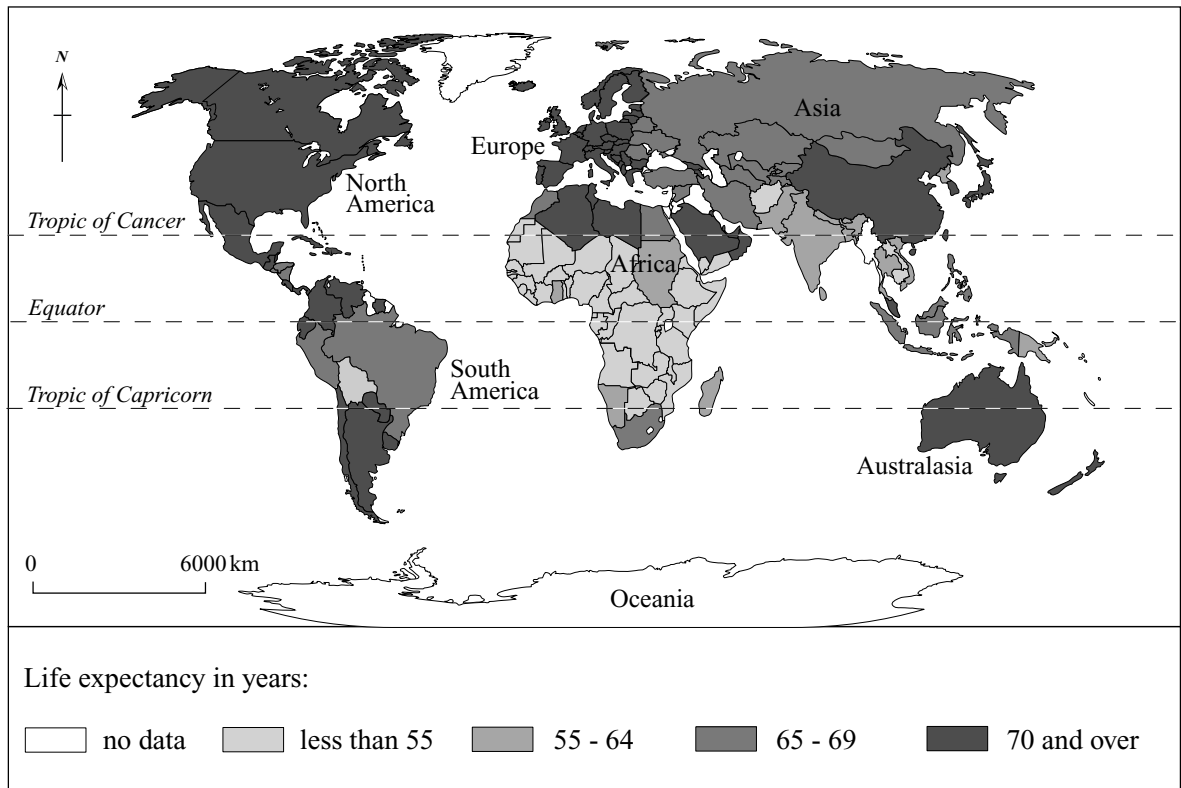


Figure 7

Describe the distribution of the countries with a life expectancy of 70 years and over.

.....

.....

.....

.....

(2 marks)

(b) Suggest why some countries have a greater life expectancy than others.

.....

.....

.....

.....

.....

.....

.....

.....

.....

(4 marks)

QUESTION 3 CONTINUES ON THE NEXT PAGE

Turn over ►

(c) Study **Figure 8** which shows the employment structure of three countries.

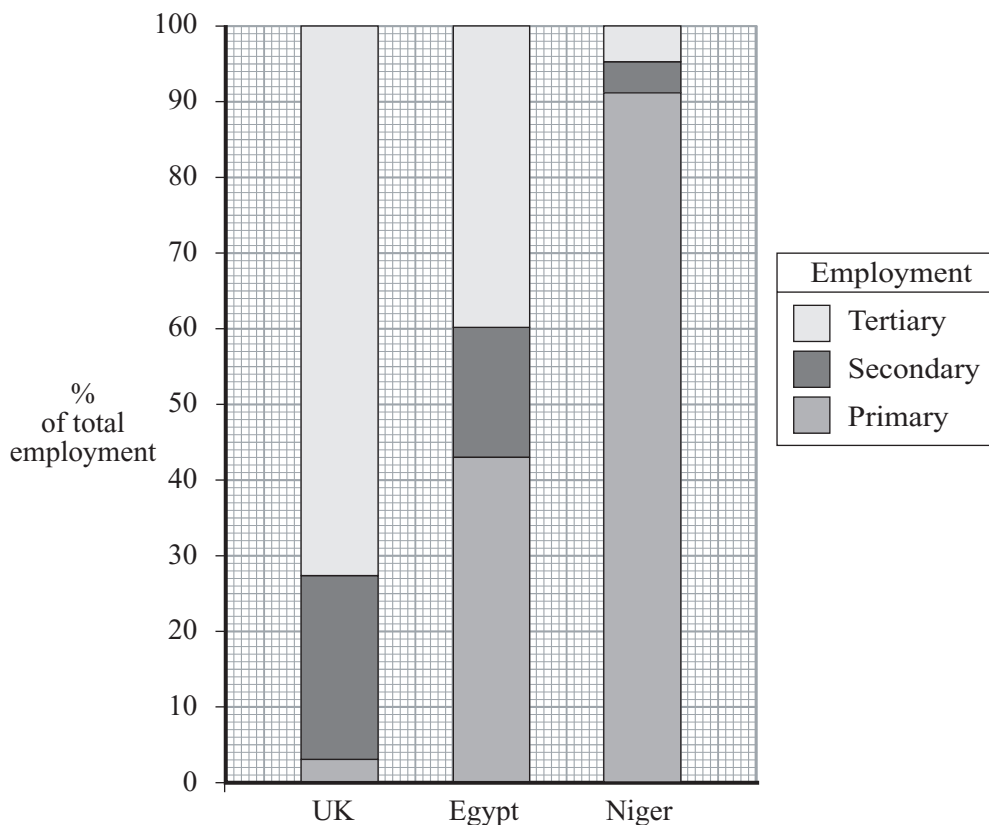


Figure 8

(i) What percentage of Egypt's population works in tertiary industry?

.....%

(1 mark)

(ii) Compare the employment structure of the UK with that of Niger.

.....

(2 marks)

(iii) Suggest why there are differences between the employment structure of the UK and that of Niger.

.....

.....

.....

.....

.....

.....

.....

.....

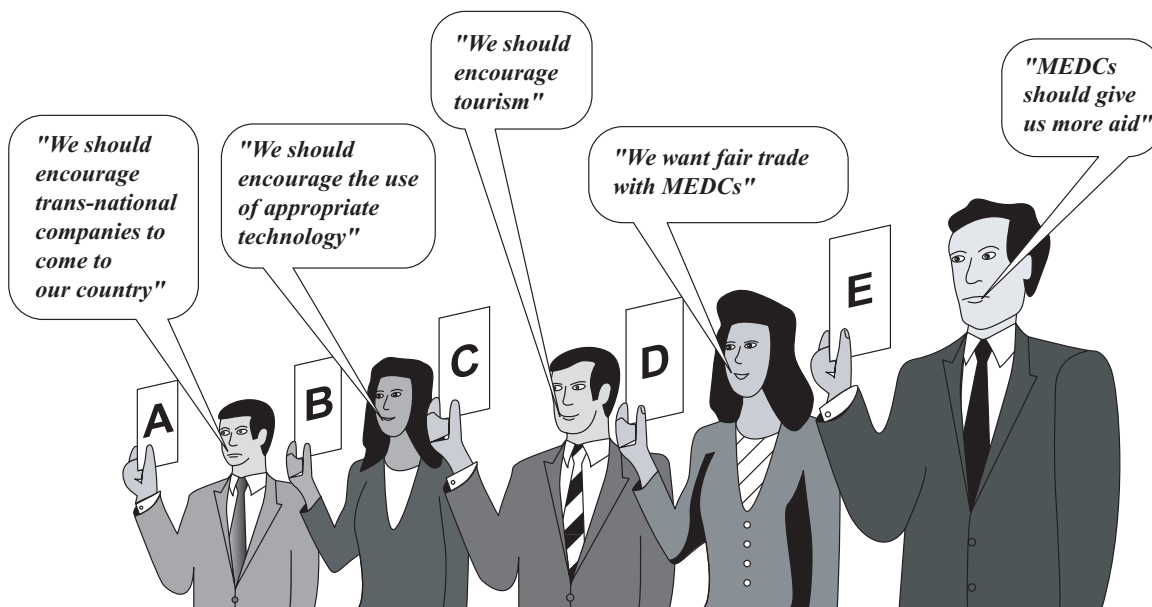
.....

(4 marks)

QUESTION 3 CONTINUES ON THE NEXT PAGE

Turn over ►

(d) Study **Figure 9** which shows some approaches to economic development.



Government of an LEDC

Figure 9

- (i) Choose **one** of the approaches (A, B, C, D or E) shown in **Figure 9**. Suggest ways in which it could help an LEDC develop its economy. Use examples from LEDCs that you have studied.

Chosen approach

.....

.....

.....

.....

.....

.....

.....

.....

.....

.....

.....

.....

.....

.....

.....

.....

.....

.....

.....

.....

.....

.....

.....

(6 marks)

(ii) Suggest **one** disadvantage that the giving of foreign aid may create for LEDCs.

.....

.....

.....

.....

(2 marks)

QUESTION 3 CONTINUES ON THE NEXT PAGE

Turn over ►

(e) Economic growth can lead to environmental problems. Study **Figure 10** which shows some environmental problems.

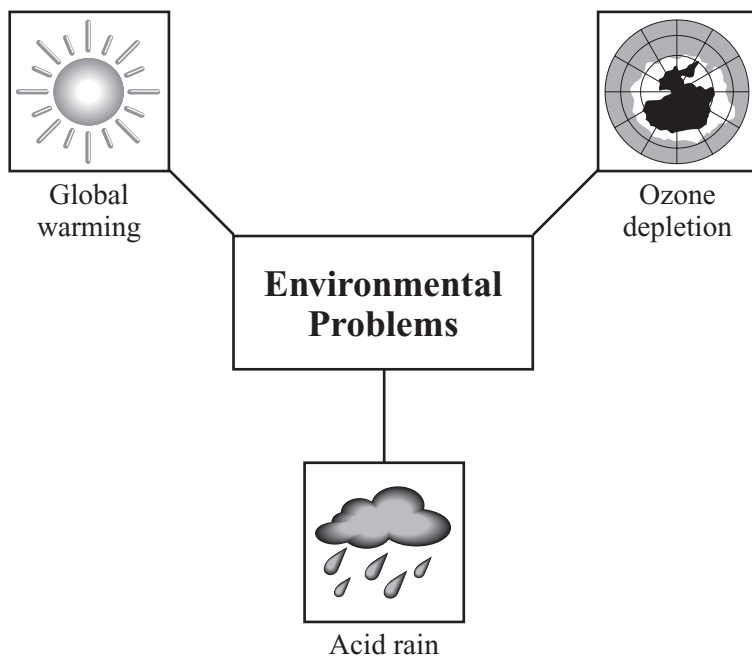


Figure 10

Choose **one** of the environmental problems shown in **Figure 10**. Describe its effects on people and the natural environment. Suggest how international agreements may help to manage the problem.

.....

.....

.....

.....

.....

.....

.....

.....

.....

.....

.....

.....

.....

.....

.....

.....

.....

.....

.....

.....

.....

.....

.....

.....

.....

.....

.....

.....

.....

.....

.....

.....

(9 marks)

30

END OF QUESTIONS

ACKNOWLEDGEMENTS OF COPYRIGHT-HOLDERS AND PUBLISHERS

Permission to reproduce all copyright material has been applied for. In some cases, efforts to contact copyright owners have been unsuccessful and AQA will be happy to rectify any omissions of acknowledgement in future if notified.

Figure 1, United Nations (U.N.) Population Division, Urban Agglomerations, 1950-2015 (The 1996 Revision), on diskette (U.N., New York, 1966).

Figure 6, NASA, developed by the Earth Observatory team (<http://earthobservatory.nasa.gov/>).

THERE ARE NO QUESTIONS PRINTED ON THIS PAGE

General Certificate of Secondary Education
June 2005



GEOGRAPHY (SPECIFICATION C)

3033/2H

Insert

Map of Stevenage showing proposed new development
not reproduced here due to thirdparty copyright constraints.

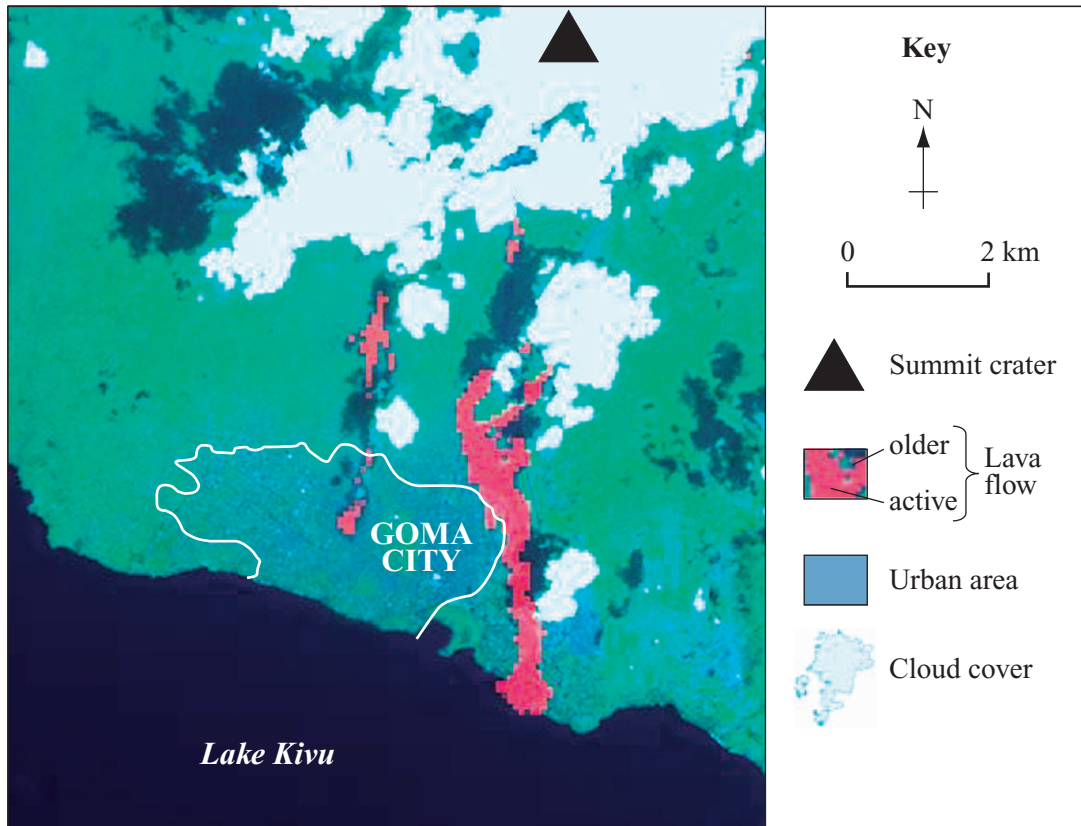


Figure 6
(for use with Question 2)