



General Certificate of Secondary Education  
June 2014

# Geography (Specification A)

**90301F**

Unit 1 Physical Geography

**Insert**

Figure 3a



Figure 3b



Figure 4

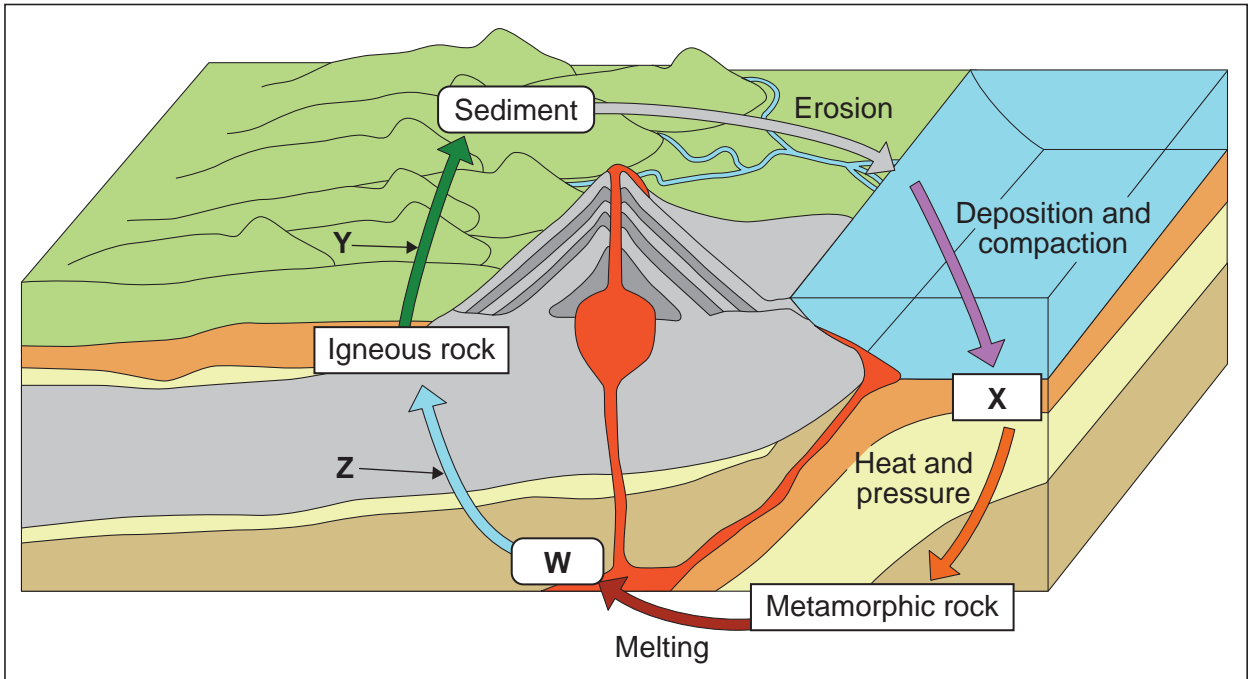


Figure 5



Figure 6a



Figure 6b



Turn over ►

Figure 7

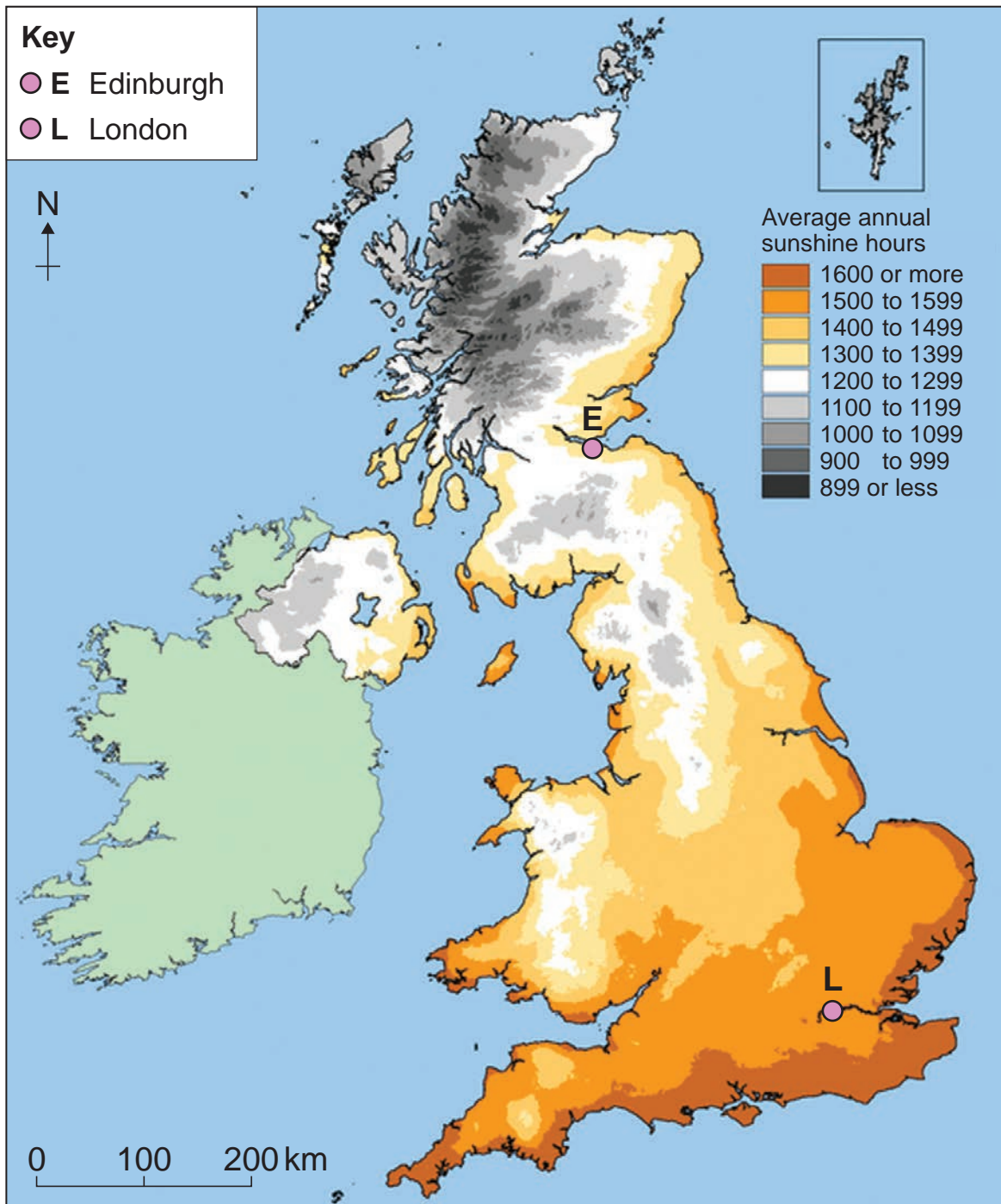


Figure 10



Figure 12

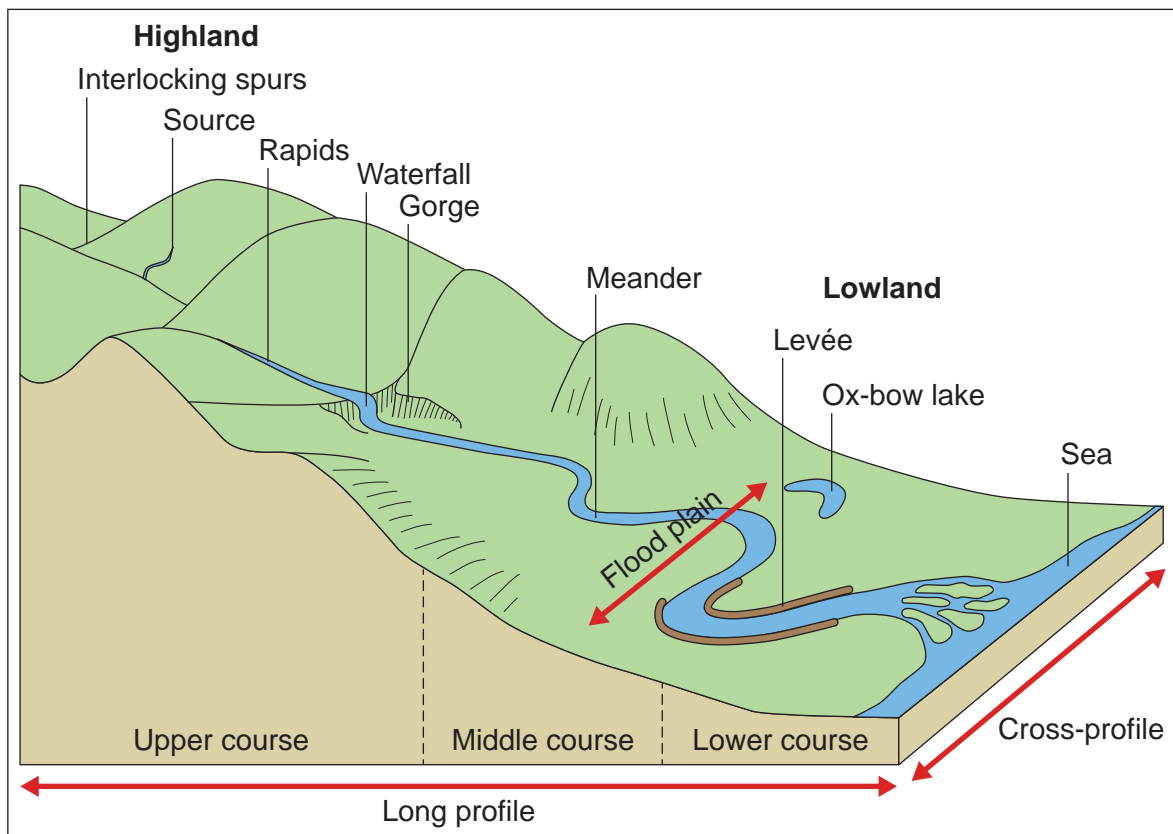




Figure 13



Figure 14

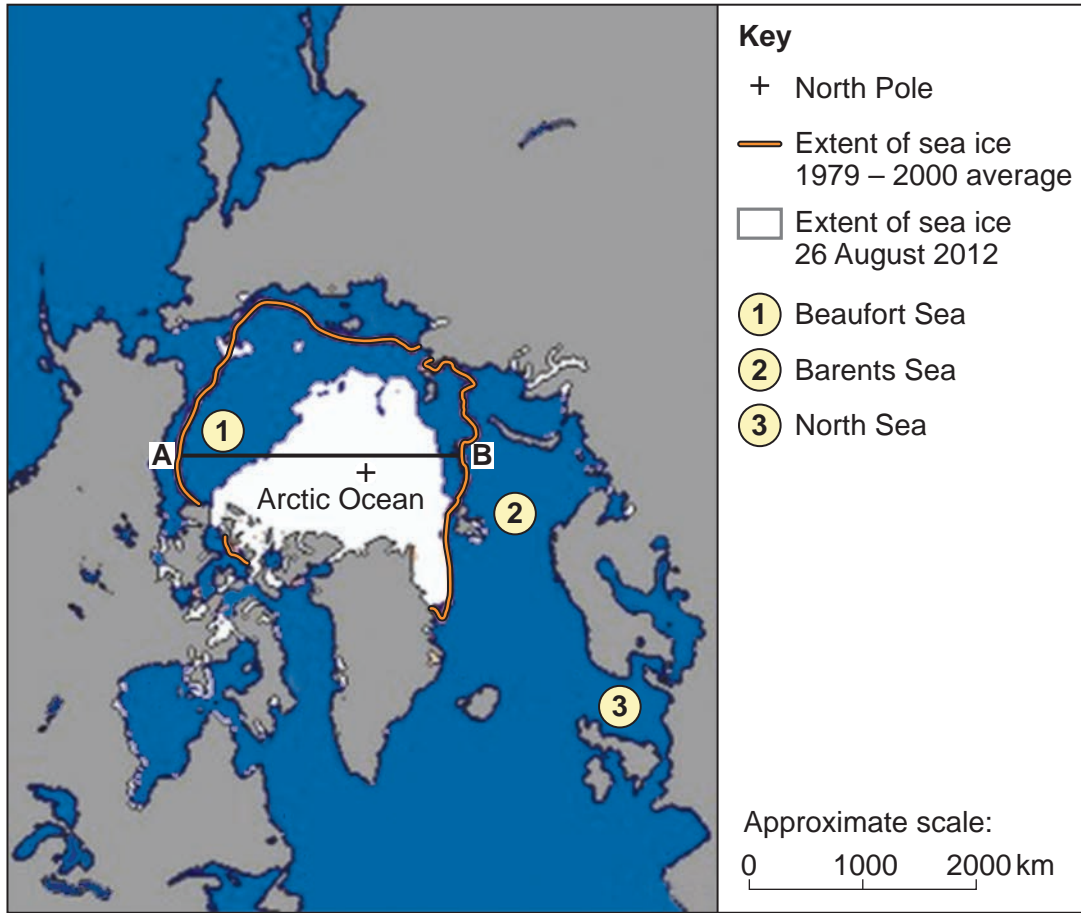


Figure 15

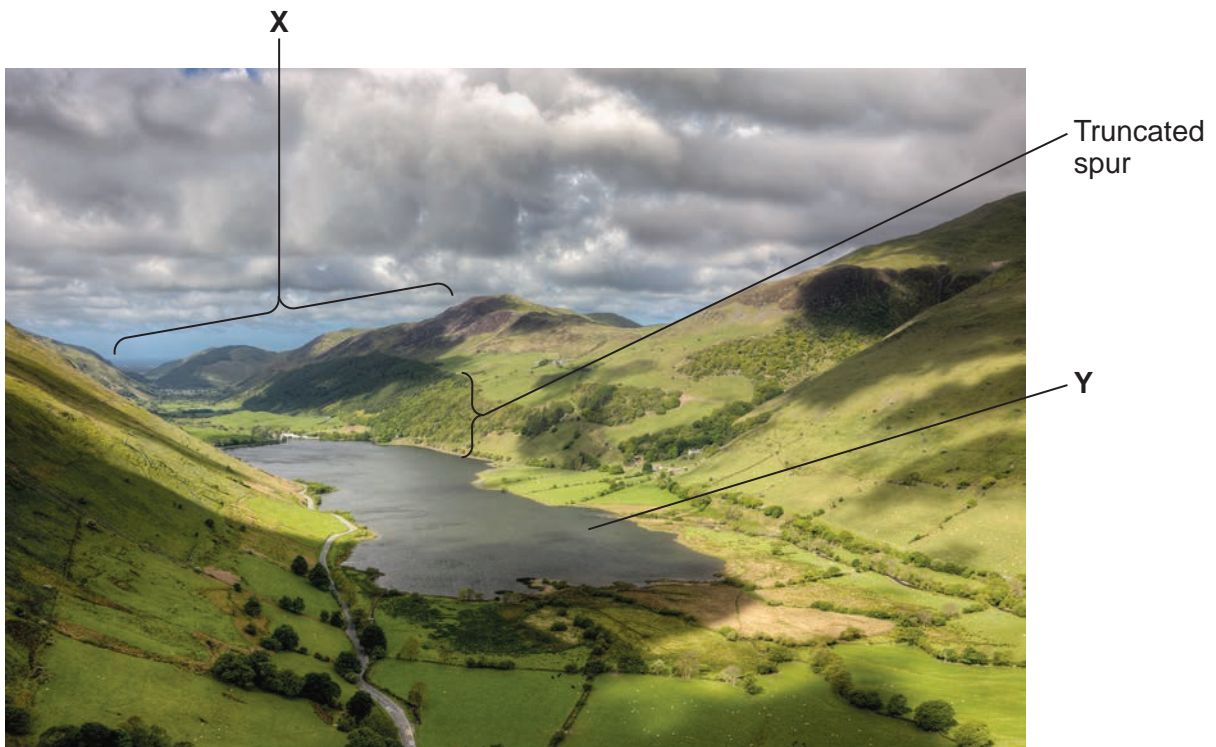
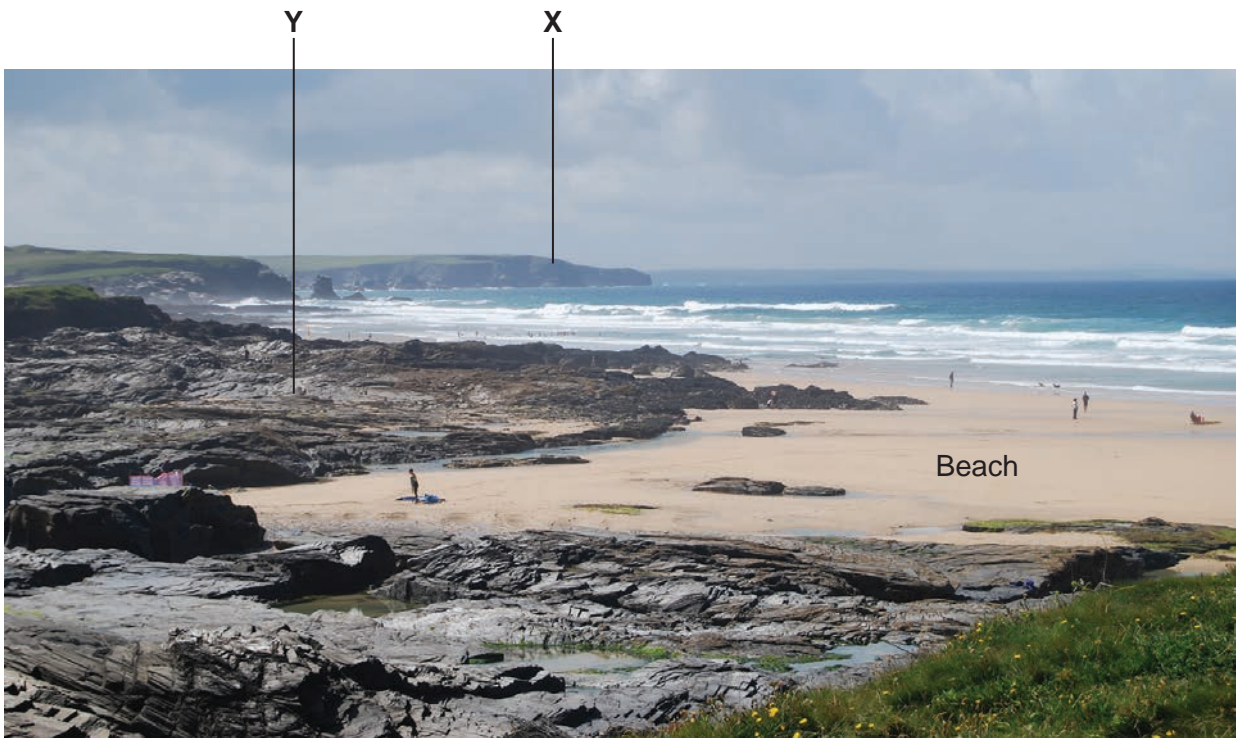


Figure 17



#### Acknowledgement of copyright-holders and publishers

Permission to reproduce all copyright material has been applied for. In some cases, efforts to contact copyright-holders have been unsuccessful and AQA will be happy to rectify any omissions of acknowledgements in future papers if notified.

- Figures 3a & 3b: © Mrs D Bacon
- Figure 4: Reproduced with permission from CGP Ltd © 2009
- Figure 5: J Canavan
- Figure 6a: Getty Images / Paul Wheeler Photography
- Figure 6b: Getty Images © Diane Macdonald
- Figure 7: [www.metoffice.gov.uk](http://www.metoffice.gov.uk). Contains public sector information licensed under the Open Government Licence v1.0
- Figure 10: Getty Images, Karl Weatherly
- Figure 12: Andrew John, Rivers and Coasts, Hodder & Stoughton, 1998. Reproduced by permission of Hodder Education
- Figure 13: J Canavan
- Figure 14: Data: NSIDC, Map: © BBC
- Figure 15: Getty Images/Rory Trappe Photography. Copyright Rory Trappe 2009
- Figure 17: J Canavan