



General Certificate of Secondary Education
Foundation Tier
June 2012

**Geography
(Specification A)**

40302F

Unit 2 Human Geography

Insert

There is no source material printed on this page

Figure 4a – A traditional map of the world

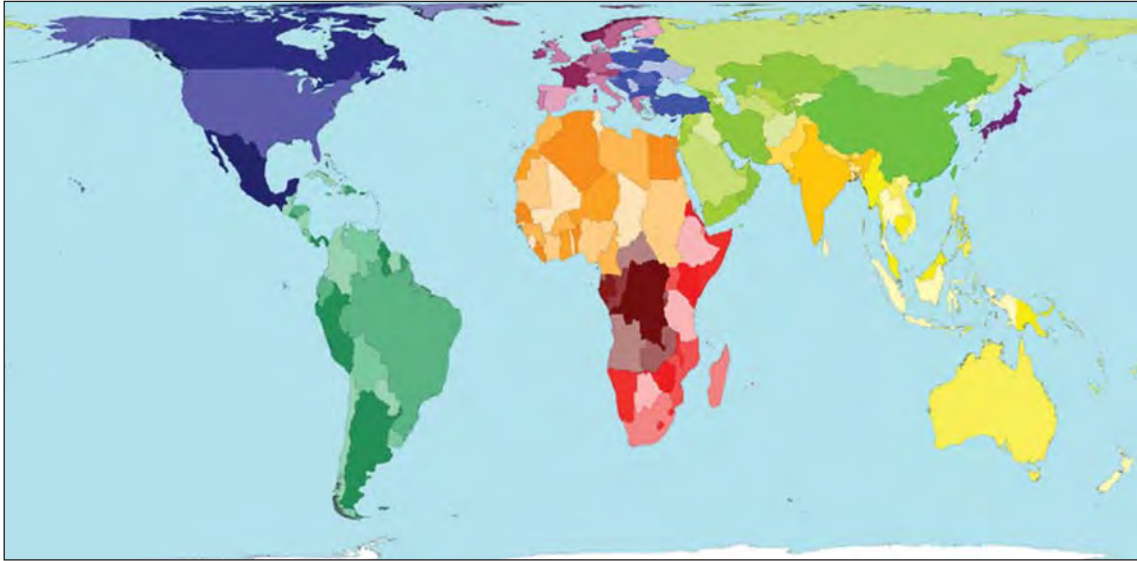


Figure 4b – A map showing the size of countries in proportion to their annual population growth

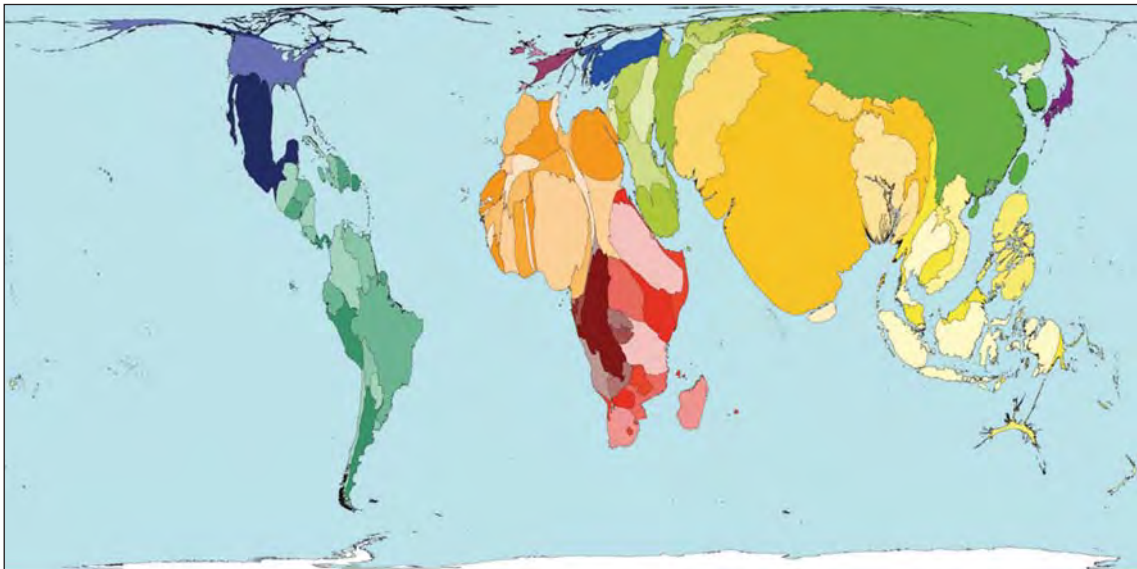
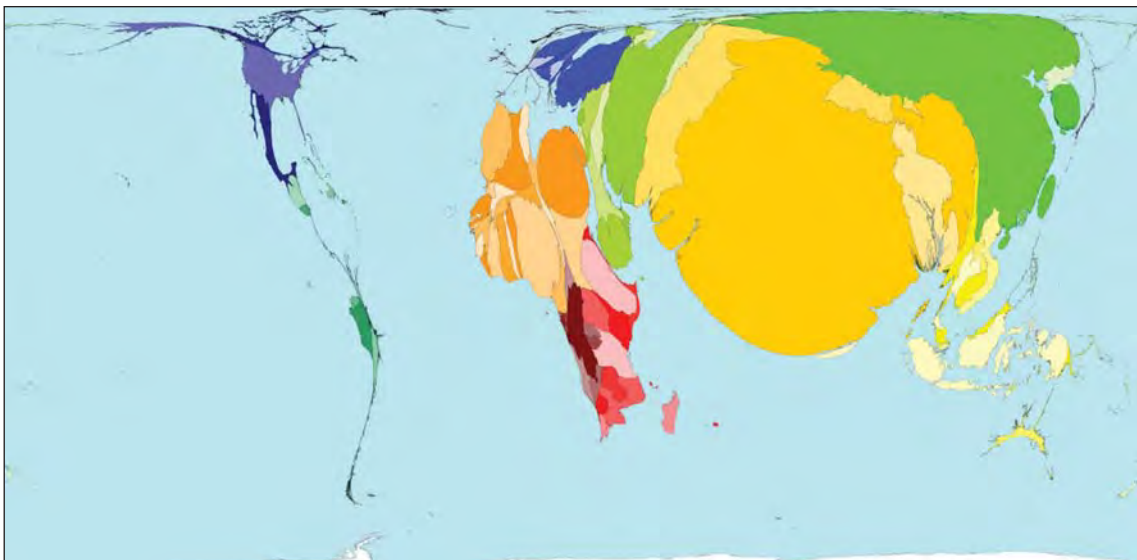


Figure 4c – A map showing the size of countries in proportion to the number of females who are illiterate (cannot read or write)



Turn over ►

Figure 6

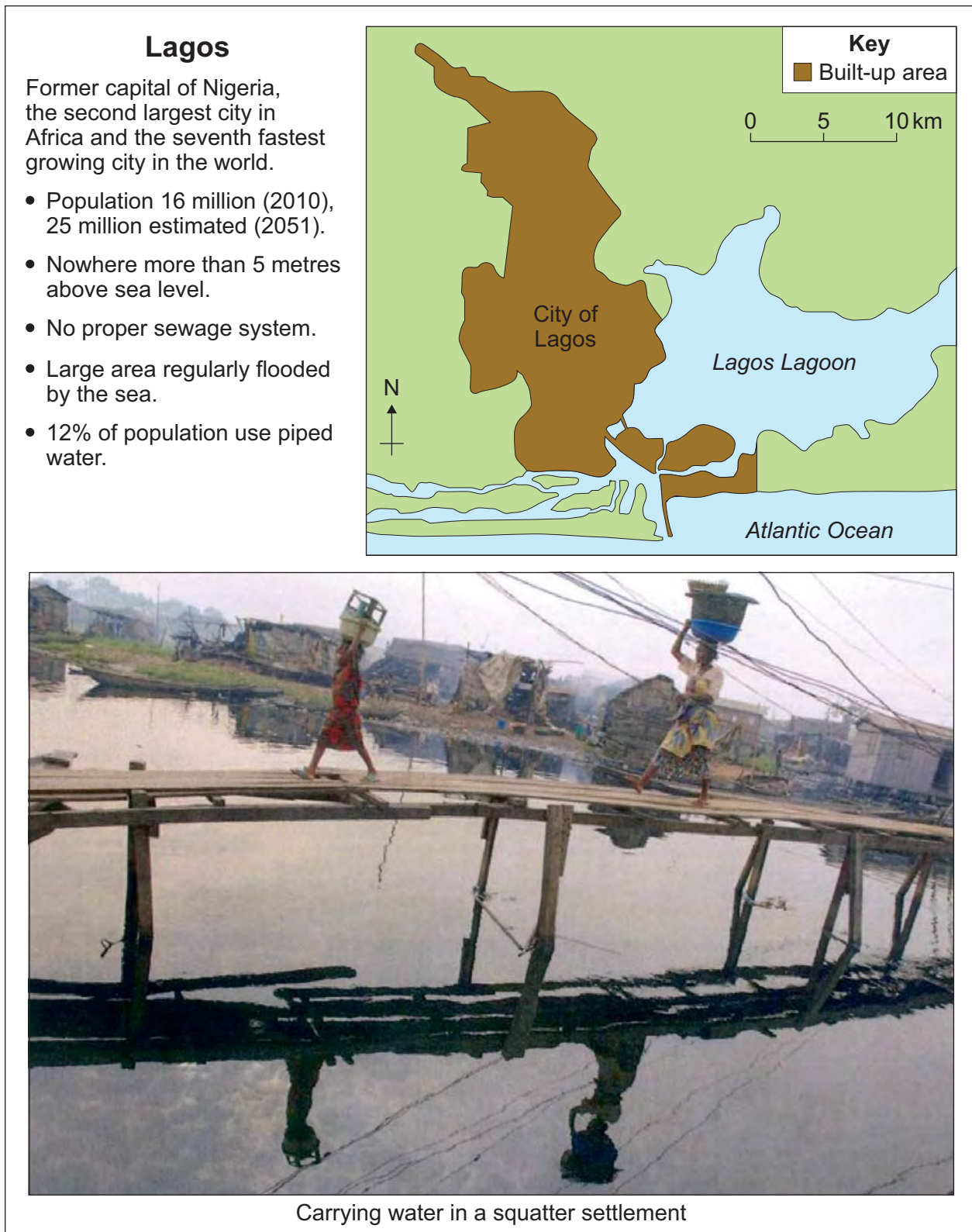


Figure 7



Dubai

Dubai is situated in the desert of the Middle East. The city depends on a supply of cheap energy. The amount of energy each person uses is among the highest in the world. Oil is used to turn seawater into fresh water for irrigation. Air conditioning is needed in the hot summer months. The city was designed for cars. Most visitors to the city travel by air from Europe and India.



Turn over ►

Figure 8a

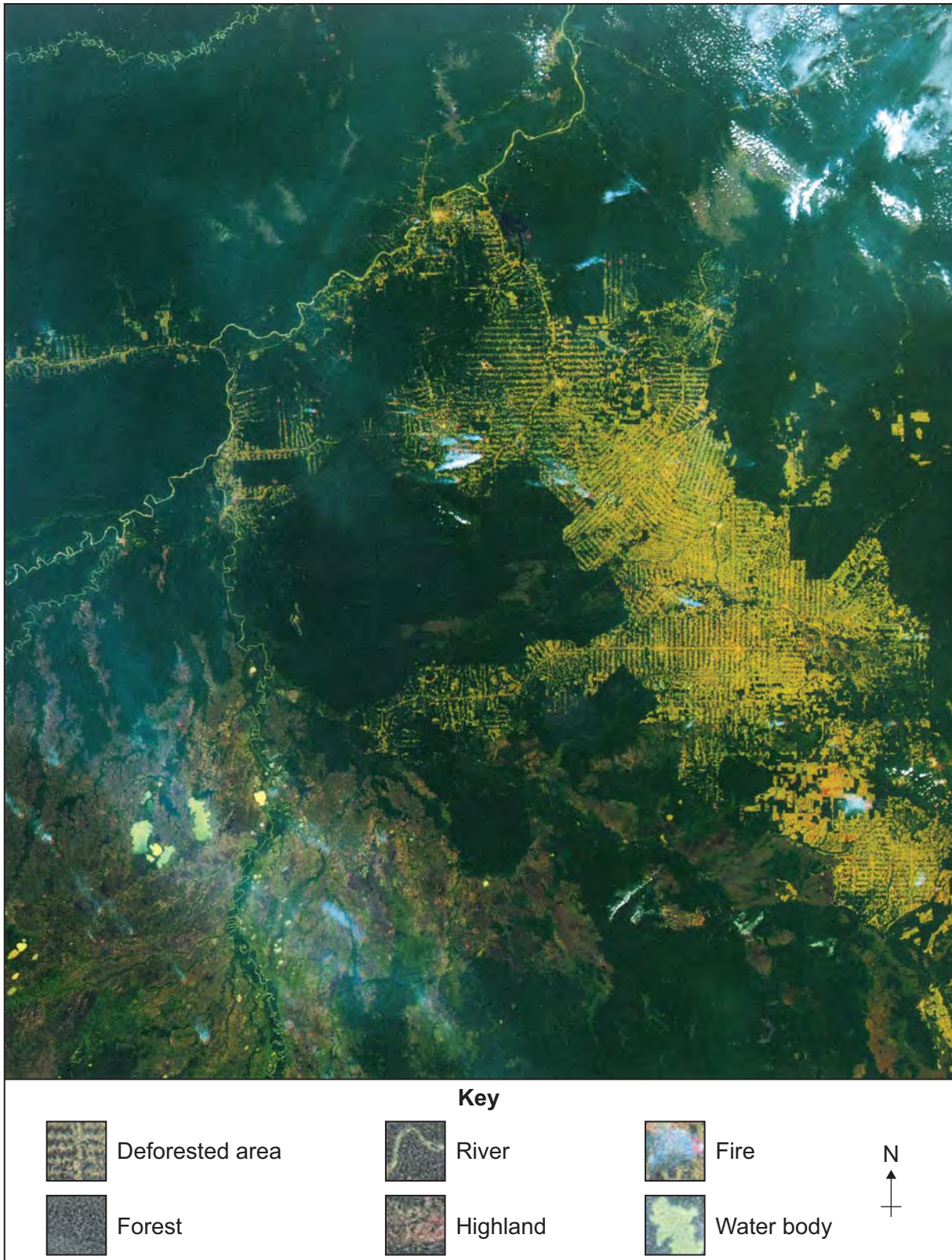
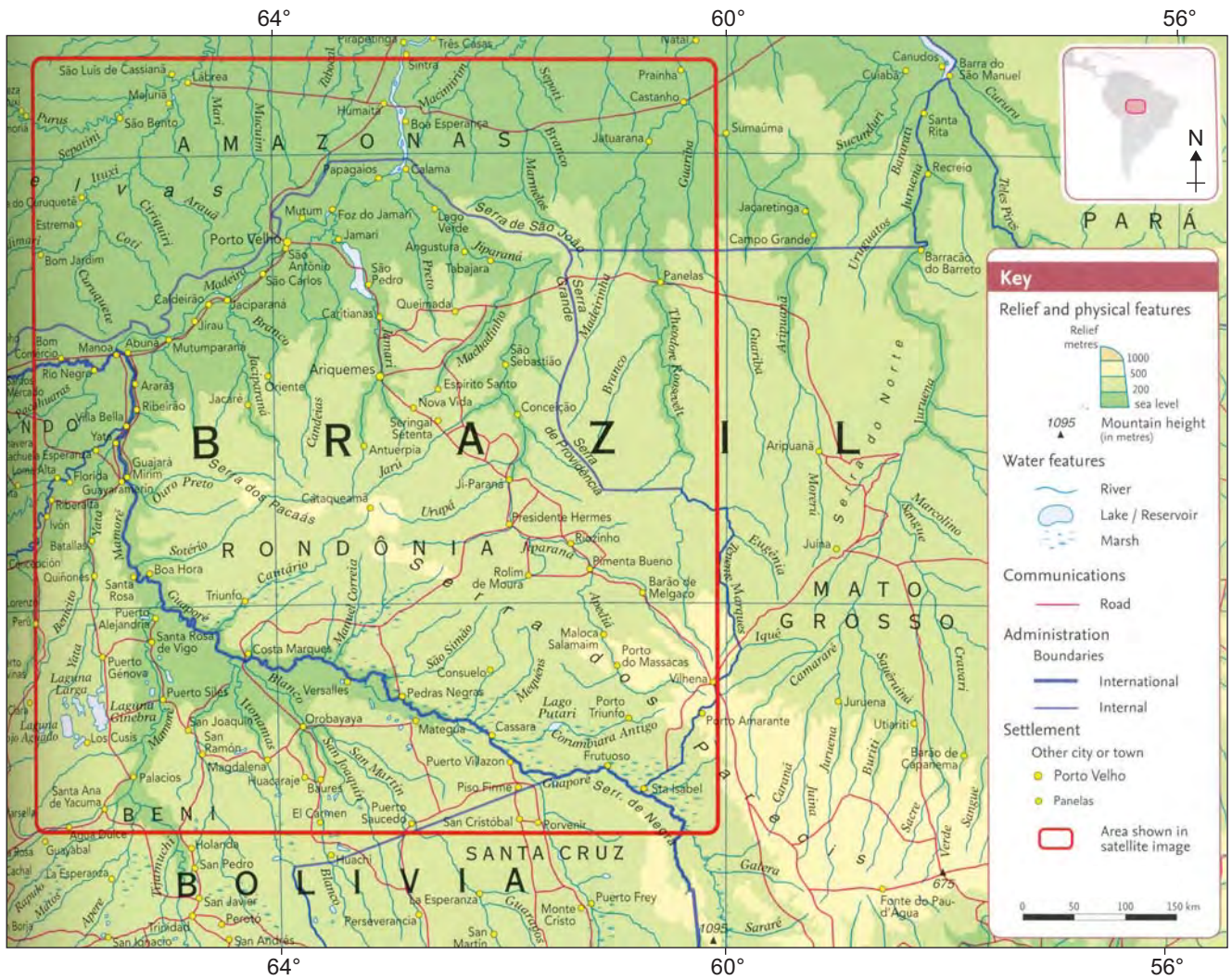


Figure 8b



Key Area shown in satellite image

Figure 10



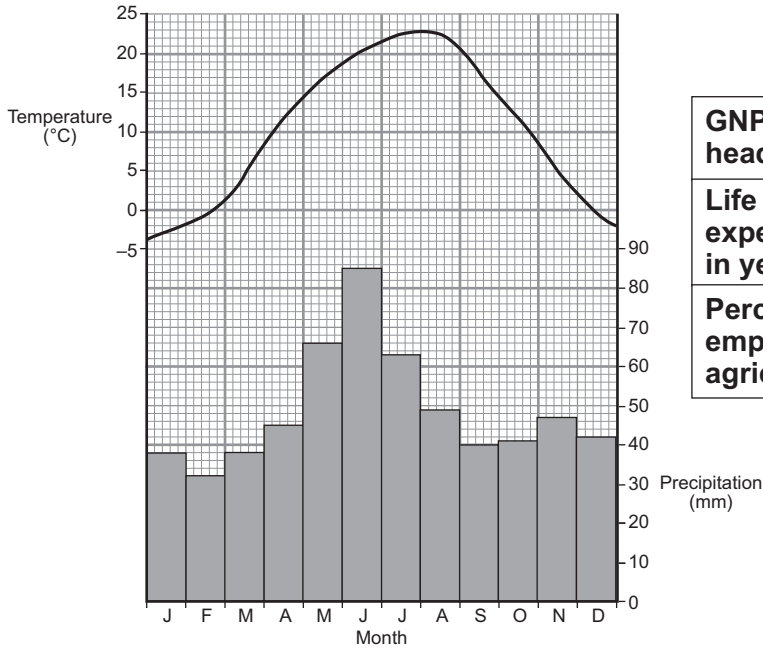
The photo of village store is not reproduced here due to third-party copyright constraints.



Figure 11



Bucharest climate



	Romania	United Kingdom
GNP per head (\$)	9292	43 785
Life expectancy in years	70	77
Percentage employed in agriculture	42	1

A view of the Carpathian Mountains



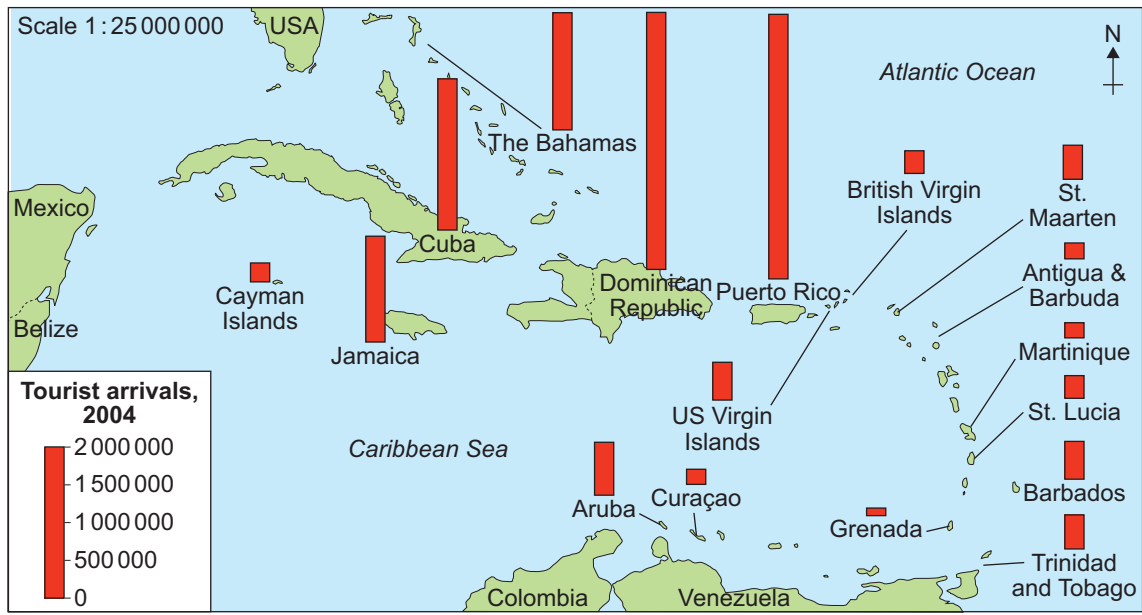
Figure 16a



Figure 16b



Figure 18



There is no source material printed on this page

ACKNOWLEDGEMENT OF COPYRIGHT-HOLDERS AND PUBLISHERS

Permission to reproduce all copyright material has been applied for. In some cases, efforts to contact copyright-holders have been unsuccessful and AQA will be happy to rectify any omissions of acknowledgements in future papers if notified.

Figures 4a 4b & 4c: www.worldmapper.org
Figure 6: Photo: © Getty Images
Figure 7: All photos © Getty Images, except
Bottom right: N I & M E Rowles
Figure 8a: © NASA
Figure 8b: *Collins Student World Atlas*, Collins, 2005, 0-00-719841-8
Figure 10: Top left: © Lancashire County Council
Top right: Acomb Village Hall
Bottom right: © Peter Facey
Figure 11: Photo: © Getty Images
Figure 16a: Archant
Figure 16b: Jane Cheema
Figure 18: *Collins Student World Atlas*, Collins, 2005, 0-00-719841-8