

Centre Number						Candidate Number				
Surname										
Other Names										
Candidate Signature										

For Examiner's Use	
Examiner's Initials	
Page	Mark
2/3	
4/5	
6/7	
8/9	
10/11	
TOTAL	



General Certificate of Secondary Education
Foundation Tier
June 2010

French

46551F

Unit 1 Listening

F

Thursday 10 June 2010 9.00 am to 9.35 am
approximately (including reading time)

You will need no other materials.

Time allowed

- 30 minutes approximately + 5 minutes reading time before the test
- **The pauses are pre-recorded for this test.**

Instructions

- Use black ink or black ball-point pen.
- Fill in the boxes at the top of this page.
- **Do not open this book until you are told to do so.**

This is what you should do for each item.

- After the question number is announced, there will be a pause to allow you to read the instructions and questions.
- Listen carefully to the recording and read the questions again.
- Listen to the recording again and then answer the questions.
- When the next question is about to start you will hear a bleep like this (*).
- You may write at any time during the test.
- Answer **all** questions.
- You must answer the questions in the spaces provided. Do not write outside the box around each page or on blank pages.
- Answer **all** the questions in **English**.
- Write neatly and put down **all** the information you are asked to give.
- Ask any questions now. **You must not ask questions or interrupt during the test.**
- You now have five minutes to read through the question paper. You may make notes during this time. You may open your answer book now.
- **The test starts now.**

Information

- The marks for questions are shown in brackets.
- The maximum mark for this paper is 35.
- You must **not** use a dictionary.



J U N 1 0 4 6 5 5 1 F 0 1

H/Jun10/46551F

46551F

Answer **all** questions in **English** in the spaces provided.



Relationships

What is their ideal partner like? Fill in the blanks.

Example: Someone withbrown.....hair.

- 1 Someone who likes (1 mark)

- 2 Someone who is (1 mark)

- 3 Someone who speaks (1 mark)

- 4 Someone who works as a (1 mark)



Holiday activities

A



B



C



D



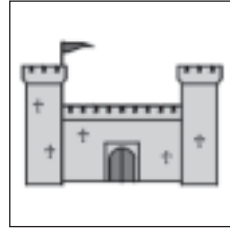
E



F



G



H



What do these people like to do?

Write the correct letter in each box.

Example:

G

5

(1 mark)

6

(1 mark)

7

(1 mark)

8

(1 mark)

9

(1 mark)

9

Turn over ▶



**Helping the environment**

A	saving water
B	saving electricity
C	using public transport
D	recycling paper
E	recycling bottles
F	reducing the use of plastic
G	doing more walking

How are these people protecting the environment?

Write the correct letter in each box.

Example:

B

10

(1 mark)

11

(1 mark)

12

(1 mark)

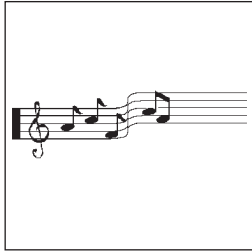
13

(1 mark)

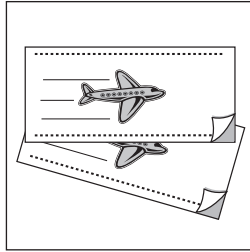


New technology

A



B



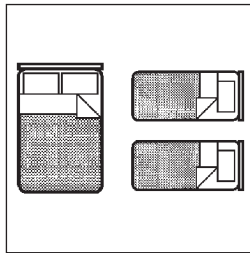
C



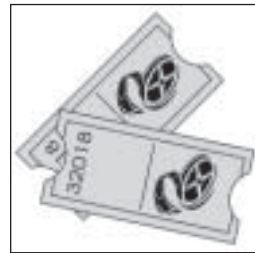
D



E



F



Why do these people use the internet?

Write the correct letter in each box.

14

(1 mark)

15

(1 mark)

16

(1 mark)

17

(1 mark)



Health issues

A	alcohol
B	smoking
C	illegal drugs
D	healthy eating
E	sleeping well
F	physical activity

What **issue** is Christophe talking about? What is his **attitude** to each issue?
Write the correct letters in the boxes.

Write **P** for a positive attitude.

Write **N** for a negative attitude.

Write **P/N** for a positive and a negative attitude.

Example:

Issue	Attitude
B	N

18

Issue	Attitude

(2 marks)

19

Issue	Attitude

(2 marks)

20

Issue	Attitude

(2 marks)



Turn over for the next question

**DO NOT WRITE ON THIS PAGE
ANSWER IN THE SPACES PROVIDED**

6

Turn over ▶



School

Amadou is talking about his school in Niger, Africa.

Choose the correct answer and write the letter in each box.

Example: Amadou lives ...

A	15 minutes from his school.
B	30 minutes from his school.
C	An hour from his school.

21 In his class, there are about ...

A	40 pupils.
B	50 pupils.
C	60 pupils.

(1 mark)

22 When do the older pupils have lessons?

A	In the morning only.
B	In the afternoon only.
C	In the morning and the afternoon.

(1 mark)



23 Why do the younger pupils go home at midday?

A	Because of the heat.
B	Because of the rain.
C	Because they have to do the housework.

(1 mark)

24 Where do the pupils have lunch?

A	In the park.
B	In the school canteen.
C	At home.

(1 mark)

Turn over for the next question

4

Turn over ►



Jobs

Listen to these people talk about their jobs. Write down an advantage and a disadvantage of each job.

	Advantage	Disadvantage
Example:	Colleagues are nice	It's tiring

	Advantage	Disadvantage
25		

(2 marks)

	Advantage	Disadvantage
26		

(2 marks)

**Free time**

A	a film review
B	the news headlines
C	a sports report
D	the weather forecast
E	a music programme
F	a game show

What's on the radio?

Write the correct letter in each box.

27

(1 mark)

28

(1 mark)

29

(1 mark)

30

*(1 mark)***END OF QUESTIONS**

There are no questions printed on this page

**DO NOT WRITE ON THIS PAGE
ANSWER IN THE SPACES PROVIDED**

