

Centre Number						Candidate Number				
Surname										
Other Names										
Candidate Signature										

For Examiner's Use	
Examiner's Initials	
Page	Mark
2/3	
4/5	
6/7	
8/9	
10/11	
12/13	
14/15	
TOTAL	



General Certificate of Secondary Education
Foundation Tier
June 2013

French

46551F

Unit 1 Listening

Monday 13 May 2013 1.30 pm to 2.05 pm
approximately (including reading time)

F

You will need no other materials.

Time allowed

- 30 minutes + 5 minutes reading time before the test
- The pauses are pre-recorded for this test.

Instructions

- Use black ink or black ball-point pen.
- Fill in the boxes at the top of this page.
- Do not open this book until you are told to do so.

This is what you should do for each item.

- After the question number is announced, there will be a pause to allow you to read the instructions and questions.
- Listen carefully to the recording and read the questions again.
- Listen to the recording again, and then answer the questions.
- When the next question is about to start you will hear a bleep like this (*).
- You may write at any time during the test.
- Answer **all** questions in **English**.
- You must answer the questions in the spaces provided. Do not write outside the box around each page or on blank pages.
- Write neatly and put down **all** the information you are asked to give.
- Ask any questions now. **You must not ask questions or interrupt during the test.**
- You now have five minutes to read through the question paper. You may make notes during this time. You may open your answer book now.
- **The test starts now.**

Information

- The marks for questions are shown in brackets.
- The maximum mark for this paper is 35.
- You must **not** use a dictionary.



J U N 1 3 4 6 5 5 1 F 0 1

H/Jun13/46551F

46551F

There are no questions printed on this page

**DO NOT WRITE ON THIS PAGE
ANSWER IN THE SPACES PROVIDED**



Answer **all** questions in **English** in the spaces provided.

Jobs



What jobs do these people want to do? Fill in the blanks.

Example: This boy wants to be a doctor

1 This girl wants to be a (1 mark)

2 This girl wants to drive a (1 mark)

3 This boy wants to work in a (1 mark)

3

Turn over ►



Sports

A



B



C



D



E



F



G



Which sport are these people doing?

Write the correct letter in each box.

Example:

B

4

(1 mark)

5

(1 mark)

6

(1 mark)

7

(1 mark)

4

Turn over ►



Holidays

A	the hotel room
B	the weather
C	the food
D	the nightlife

E	the journey
F	the cost
G	sports
H	shopping

These young people are talking about holidays. What aspect of the holiday are they talking about?

Write the correct letter in each box.

8

(1 mark)

9

(1 mark)

10

(1 mark)

11

(1 mark)

School



A	after school activities
B	lesson times
C	the rules
D	the uniform
E	the journey to school

F	the canteen
G	sports facilities
H	school friends
I	homework
J	the subjects

These people are talking about their school.

What **two** aspects of school are they talking about? Write the correct letters in the boxes.

Example:

B	E
----------	----------

12

--	--

(2 marks)

13

--	--

(2 marks)

14

--	--

(2 marks)

10

Turn over ►



Local environment

These young people are talking about their town.

Choose the correct answer and write the letter in the box.

Example: In this boy's town there is a lot of ...

A	crime.
B	unemployment.
C	litter.

C

15 This town is very ...

A	dirty.
B	noisy.
C	quiet.

(1 mark)



16 This town is ...

A	polluted.
B	clean.
C	small.

(1 mark)

17 This town is ...

A	boring.
B	not suitable for tourists.
C	lively.

(1 mark)

18 This town is good for ...

A	shopping.
B	sports.
C	parks.

(1 mark)

4

Turn over ►



Buying a new house

A	The kitchen
B	The cellar
C	The safety of the area
D	Convenient for getting to work
E	The decoration of the house

F	The parking
G	Convenient for public transport
H	Poor public transport
I	The view

These people are talking about houses they have visited as part of a TV programme to find a suitable home.

Choose an advantage and a disadvantage of each house. Write the correct letters in the boxes.

Advantage**Disadvantage**

19

*(2 marks)***Advantage****Disadvantage**

20

*(2 marks)***Advantage****Disadvantage**

21

(2 marks)

Turn over for the next question

**DO NOT WRITE ON THIS PAGE
ANSWER IN THE SPACES PROVIDED**

6

Turn over ▶



Relationships



These people are taking part in speed dating. Choose a suitable partner for each person and write the correct letter in each box.

22

This person would suit someone who ...

A	likes going out and dressing well.
B	likes animals.
C	is quiet and serious.

(1 mark)



23 This person would suit someone who ...

A	likes going out and having a good time.
B	enjoys reading.
C	enjoys travelling.

(1 mark)

24 This person would suit someone who ...

A	enjoys watching films and reading.
B	likes cars.
C	likes to keep fit.

(1 mark)

25 This person would suit someone who ...

A	wants a long term relationship.
B	enjoys sport.
C	enjoys travelling.

(1 mark)

4

Turn over ►



Health

A



B



C



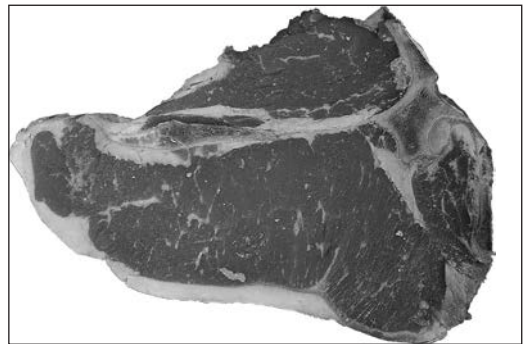
D



E



F



G



H



These people are talking about what they eat. What food are they talking about?

Write the correct letter in each box.

Food item

26

(1 mark)

Food item

27

(1 mark)

Food item

28

(1 mark)

Food item

29

(1 mark)

END OF QUESTIONS

4



There are no questions printed on this page

**DO NOT WRITE ON THIS PAGE
ANSWER IN THE SPACES PROVIDED**

ACKNOWLEDGEMENT OF COPYRIGHT-HOLDERS AND PUBLISHERS

All images, © Thinkstock.

Copyright © 2013 AQA and its licensors. All rights reserved.

