

Centre Number						Candidate Number				
Surname										
Other Names										
Candidate Signature										

For Examiner's Use	
Examiner's Initials	
Page	Mark
2/3	
4/5	
6/7	
8/9	
10/11	
TOTAL	



General Certificate of Secondary Education  
Foundation Tier  
June 2010

# French

46551F

## Unit 1 Listening

**F**

Thursday 10 June 2010 9.00 am to 9.35 am  
approximately (including reading time)

You will need no other materials.

### Time allowed

- 30 minutes approximately + 5 minutes reading time before the test
- **The pauses are pre-recorded for this test.**

### Instructions

- Use black ink or black ball-point pen.
- Fill in the boxes at the top of this page.
- **Do not open this book until you are told to do so.**

This is what you should do for each item.

- After the question number is announced, there will be a pause to allow you to read the instructions and questions.
- Listen carefully to the recording and read the questions again.
- Listen to the recording again and then answer the questions.
- When the next question is about to start you will hear a bleep like this (\*).
- You may write at any time during the test.
- Answer **all** questions.
- You must answer the questions in the spaces provided. Do not write outside the box around each page or on blank pages.
- Answer **all** the questions in **English**.
- Write neatly and put down **all** the information you are asked to give.
- Ask any questions now. **You must not ask questions or interrupt during the test.**
- You now have five minutes to read through the question paper. You may make notes during this time. You may open your answer book now.
- **The test starts now.**

### Information

- The marks for questions are shown in brackets.
- The maximum mark for this paper is 35.
- You must **not** use a dictionary.



J U N 1 0 4 6 5 5 1 F 0 1

H/Jun10/46551F

46551F

Answer **all** questions in **English** in the spaces provided.



### Relationships

What is their ideal partner like? Fill in the blanks.

**Example:** Someone with .....brown.....hair.

- 1            Someone who likes ..... (1 mark)
  
- 2            Someone who is ..... (1 mark)
  
- 3            Someone who speaks ..... (1 mark)
  
- 4            Someone who works as a ..... (1 mark)



**Holiday activities**

**A**



**B**



**C**



**D**



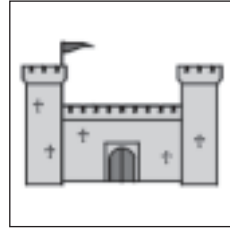
**E**



**F**



**G**



**H**



What do these people like to do?

Write the correct letter in each box.

Example:

**G**

5

(1 mark)

6

(1 mark)

7

(1 mark)

8

(1 mark)

9

(1 mark)

9

Turn over ▶



**Helping the environment**

<b>A</b>	saving water
<b>B</b>	saving electricity
<b>C</b>	using public transport
<b>D</b>	recycling paper
<b>E</b>	recycling bottles
<b>F</b>	reducing the use of plastic
<b>G</b>	doing more walking

How are these people protecting the environment?

Write the correct letter in each box.

**Example:**

**B**

**10**

*(1 mark)*

**11**

*(1 mark)*

**12**

*(1 mark)*

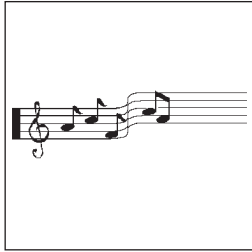
**13**

*(1 mark)*

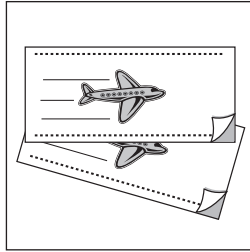


## New technology

A



B



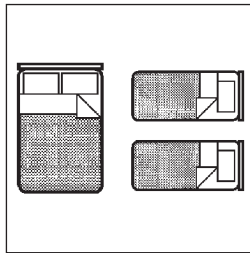
C



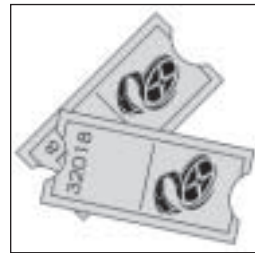
D



E



F



Why do these people use the internet?

Write the correct letter in each box.

14

(1 mark)

15

(1 mark)

16

(1 mark)

17

(1 mark)



**Health issues**

<b>A</b>	alcohol
<b>B</b>	smoking
<b>C</b>	illegal drugs
<b>D</b>	healthy eating
<b>E</b>	sleeping well
<b>F</b>	physical activity

What **issue** is Christophe talking about? What is his **attitude** to each issue?  
Write the correct letters in the boxes.

Write **P** for a positive attitude.

Write **N** for a negative attitude.

Write **P/N** for a positive and a negative attitude.

Example:

Issue	Attitude
<b>B</b>	<b>N</b>

18

Issue	Attitude

(2 marks)

19

Issue	Attitude

(2 marks)

20

Issue	Attitude

(2 marks)



Turn over for the next question

DO NOT WRITE ON THIS PAGE  
ANSWER IN THE SPACES PROVIDED

6

Turn over ►



**School**

Amadou is talking about his school in Niger, Africa.

Choose the correct answer and write the letter in each box.

**Example:** Amadou lives ...

<b>A</b>	15 minutes from his school.
<b>B</b>	30 minutes from his school.
<b>C</b>	An hour from his school.

**21** In his class, there are about ...

<b>A</b>	40 pupils.
<b>B</b>	50 pupils.
<b>C</b>	60 pupils.

(1 mark)

**22** When do the older pupils have lessons?

<b>A</b>	In the morning only.
<b>B</b>	In the afternoon only.
<b>C</b>	In the morning and the afternoon.

(1 mark)





23 Why do the younger pupils go home at midday?

<b>A</b>	Because of the heat.
<b>B</b>	Because of the rain.
<b>C</b>	Because they have to do the housework.

(1 mark)

24 Where do the pupils have lunch?

<b>A</b>	In the park.
<b>B</b>	In the school canteen.
<b>C</b>	At home.

(1 mark)

Turn over for the next question

4

Turn over ►



**Jobs**

Listen to these people talk about their jobs. Write down an advantage and a disadvantage of each job.

	Advantage	Disadvantage
Example:	Colleagues are nice	It's tiring

	Advantage	Disadvantage
25		

(2 marks)

	Advantage	Disadvantage
26		

(2 marks)



**Free time**

<b>A</b>	a film review
<b>B</b>	the news headlines
<b>C</b>	a sports report
<b>D</b>	the weather forecast
<b>E</b>	a music programme
<b>F</b>	a game show

What's on the radio?

Write the correct letter in each box.

27

*(1 mark)*

28

*(1 mark)*

29

*(1 mark)*

30

*(1 mark)***END OF QUESTIONS**

**There are no questions printed on this page**

**DO NOT WRITE ON THIS PAGE  
ANSWER IN THE SPACES PROVIDED**

