

**GENERAL CERTIFICATE OF SECONDARY EDUCATION**  
**ENVIRONMENTAL AND LAND-BASED SCIENCE**  
Care of Animals (Foundation Tier)

**B494/01**

Candidates answer on the question paper.  
A calculator may be used for this paper.

**OCR supplied materials:**  
None

**Other materials required:**

- Pencil
- Ruler (cm/mm)

**Wednesday 26 January 2011**  
**Afternoon**

**Duration: 45 minutes**



Candidate forename		Candidate surname	
-----------------------	--	----------------------	--

Centre number						Candidate number				
---------------	--	--	--	--	--	------------------	--	--	--	--

**INSTRUCTIONS TO CANDIDATES**

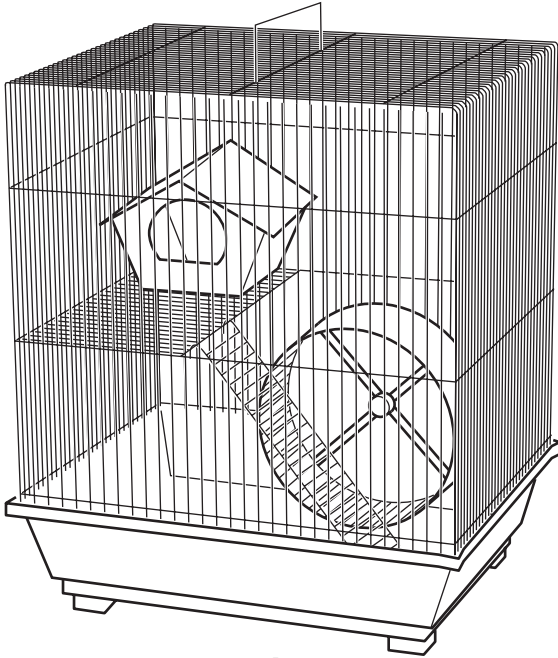
- Write your name, centre number and candidate number in the boxes above. Please write clearly and in capital letters.
- Use black ink. Pencil may be used for graphs and diagrams only.
- Read each question carefully. Make sure you know what you have to do before starting your answer.
- Write your answer to each question in the space provided. Additional paper may be used if necessary but you must clearly show your candidate number, centre number and question number(s).
- Answer **all** the questions.
- Do **not** write in the bar codes.

**INFORMATION FOR CANDIDATES**

- The number of marks is given in brackets [ ] at the end of each question or part question.
- The total number of marks for this paper is **36**.
- This document consists of **16** pages. Any blank pages are indicated.

Answer **all** the questions.

1 Which cage is most suitable for a budgerigar?



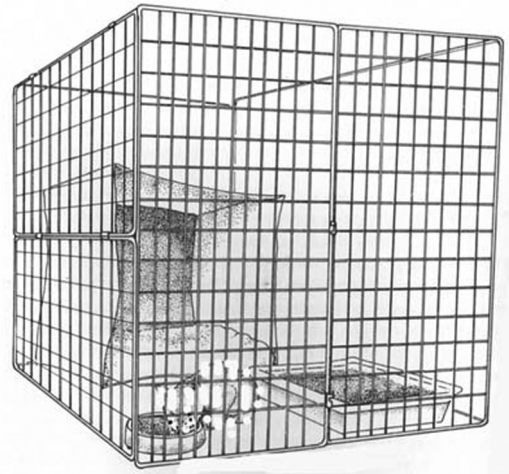
**A**



**B**



**C**



**D**

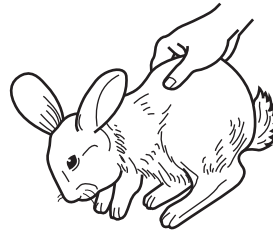
Answer **A, B, C or D** ..... [1]

2 Small animals should be handled carefully and safely.

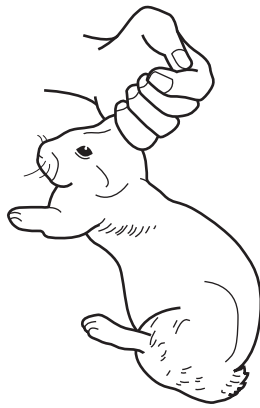
Which diagram shows the correct way to hold a rabbit?



A



B



C



D

Answer **A, B, C** or **D** ..... [1]

3 A concentrate diet for small animals contains a high level of carbohydrate.

The carbohydrate is mainly used for:

- A energy
- B fertility
- C growth
- D insulation

Answer **A, B, C** or **D** ..... [1]

4 Bacteria, fungi and viruses may cause ill health in animals.

Select **any** three conditions from the list below and write them into the correct column in the table.

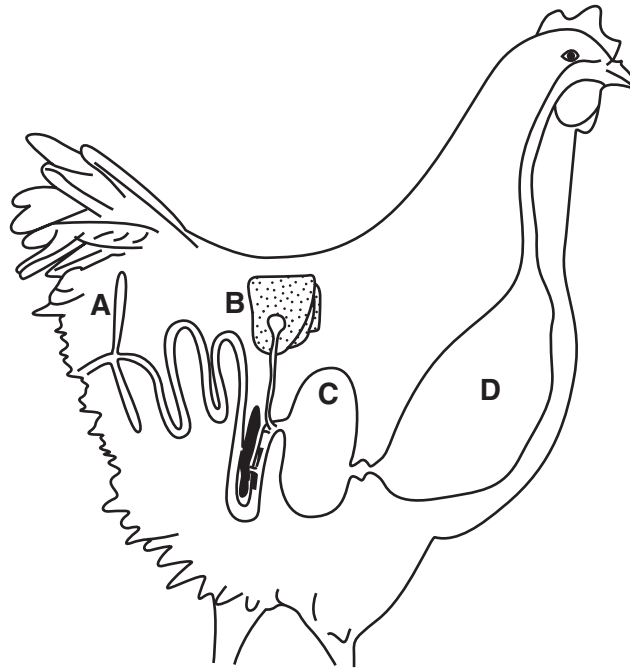
- abscesses (boils)**
- colds**
- influenza ('flu')**
- mastitis**
- myxomatosis**
- ringworm**
- snuffles**
- tuberculosis (TB)**
- wet tail**

<b>cause of ill health</b>		
<b>bacterium</b>	<b>fungus</b>	<b>virus</b>

[3]

5 The diagram shows the digestive system of a bird.

Which part, **A**, **B**, **C** or **D**, has no comparable structure in the digestive system of a rabbit?



Answer **A**, **B**, **C** or **D** ..... [1]

6 The photographs show newly born kittens and chicks.



Mothers provide care for their young.

Which option, **A**, **B**, **C** or **D** is correct for **all** mammals and **all** birds?

	<b>mammals provide their young with</b>	<b>birds provide their young with</b>
<b>A</b>	milk and protection	protection and warmth
<b>B</b>	milk and warmth	milk and protection
<b>C</b>	protection and warmth	warmth and regurgitated food
<b>D</b>	regurgitated food and protection	milk and protection

Answer **A**, **B**, **C** or **D** ..... [1]

7 The photograph shows a police sniffer dog with its handler.



A police sniffer dog needs to have special qualities.

Which **two** qualities are most important in sniffer dogs?

- A aggression
- B coat quality
- C colour
- D muscle
- E obedience
- F size
- G speed
- H temperament

Answer **A, B, C, D, E, F, G** or **H** ..... and .....[2]

8 Many people in the UK keep small animals as pets.

These include dogs.

Dogs are also used by the Police and Customs.

Suggest two **other** reasons why people in the UK keep dogs.

1 .....

2 ..... [2]

9 The photograph shows a student grooming a guinea pig.



The grooming must be done safely by the student and not harm the animal.

(a) List **two** instructions that should be given to ensure the safety of the student.

1 .....

2 ..... [2]

(b) Suggest **one** instruction that should be given to prevent harm to the animal.

..... [1]





11 Small animals feed on a wide range of foods.

Most of this food is available from pet shops.

Food can also be collected from:

- hedgerows
- ponds
- roadside verges
- woods.

Choose a pet mammal, bird, fish or reptile.

Name a plant, animal or insect that you could collect from the wild to feed to your pet.

pet chosen.....

wild food collected..... [1]

12 The table below shows three parts of the digestive system of a bird.

Complete the table to show **one** function of each part.

part of digestive system	function
crop	.....
gizzard	.....
small intestine	.....

[3]

13 The photograph shows a Russian hamster feeding on fibre.



Why is fibre important in the diet?

.....  
..... [1]

14 Animals kept as pets are sold in pet shops.

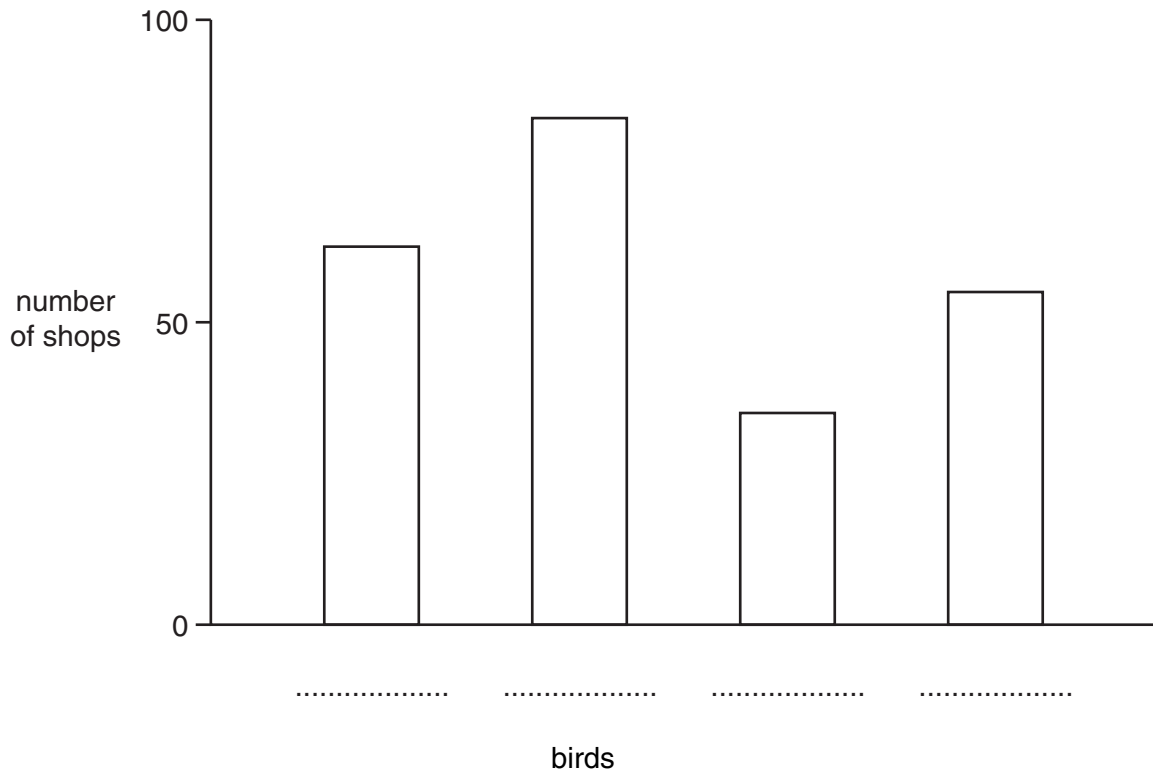
A survey was carried out to find out how many pet shops sold particular animals.

The results are shown in the table.

mammals			birds			reptiles		
animals on sale	number of shops	%	animals on sale	number of shops	%	animals on sale	number of shops	%
hamster	132	59.5	budgie	88	39.6	lizard	77	34.5
mouse/ rat	132	59.5	canary	64	28.8	snake	68	30.4
gerbil/ jird	106	47.7	finch	56	25.2	tortoise	63	28.4
chinchilla	64	28.8	cockatiel	42	18.9	terrapin	27	12.2

- (a) What percentage of pet shops sell snakes? ..... [1]
- (b) Which mammal is sold in the lowest number of pet shops? ..... [1]
- (c) The bar chart below shows the number of shops selling the four types of birds.

Write the type of bird in the space below the correct bar on the chart.

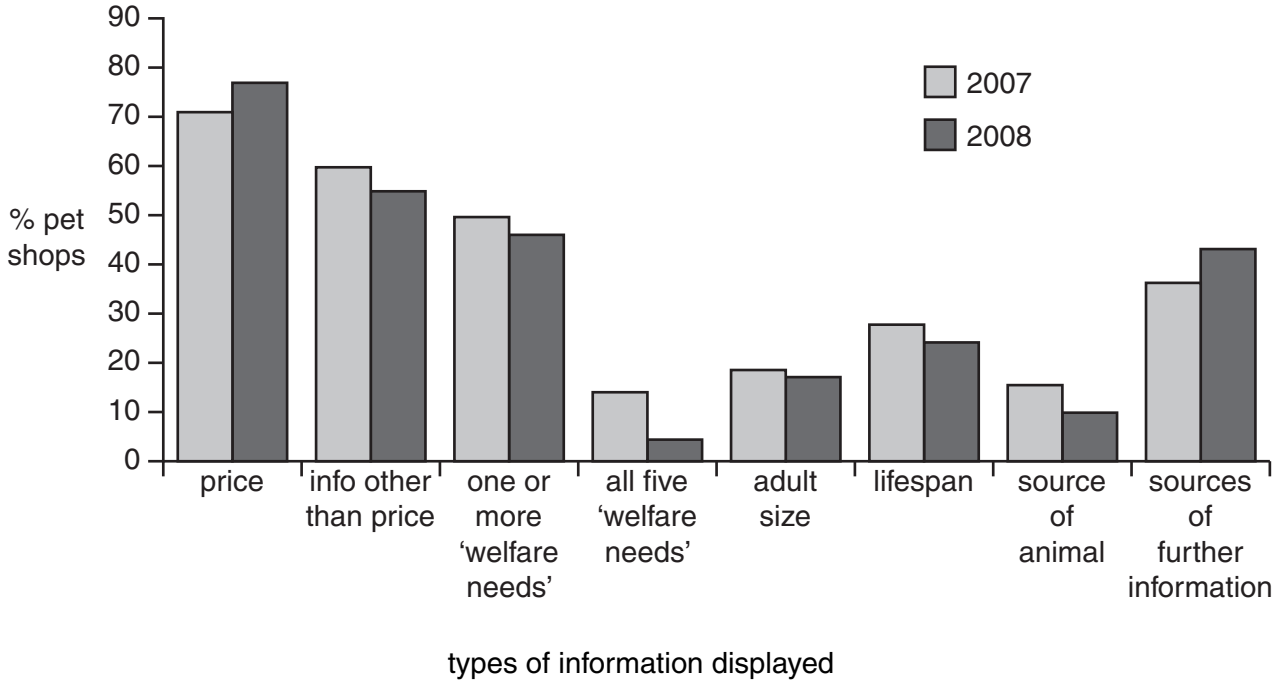


[2]

15 Breeds of animals have different characteristics and requirements.

Pet shops provide information for their customers on the requirements of different animals.

A survey was carried out in 2007 and 2008 to investigate the type of information that pet shops provided.



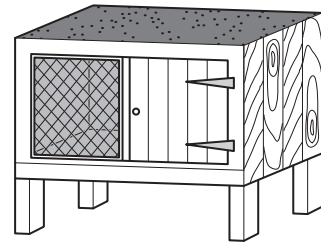
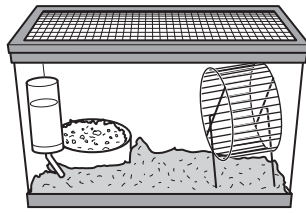
(a) Name a type of information that was found in an increased percentage of pet shops in 2008.

..... [1]

(b) Which type of information shows the greatest change between 2007 and 2008?

..... [1]

16 Small mammals, birds and reptiles are kept in a wide variety of housing.



All types of housing have features to provide for the needs of animals. For example, animals need ventilation which can be provided by using wire mesh or ventilation slots.

State three other needs of animals and describe for each, how they are provided for by features of the housing.

.....

.....

.....

.....

..... [3]

17 The photograph shows a guinea pig being washed in preparation for a show.



What makes an animal a potential show winner?

.....  
.....  
..... [2]

18 For a named small mammal, bird or reptile, describe **three** routine health checks that need to be made.

Suggest why each check is needed.

named animal .....

.....  
.....  
.....  
.....  
..... [3]

**END OF QUESTION PAPER**

**PLEASE DO NOT WRITE ON THIS PAGE**



**Copyright Information**

OCR is committed to seeking permission to reproduce all third-party content that it uses in its assessment materials. OCR has attempted to identify and contact all copyright holders whose work is used in this paper. To avoid the issue of disclosure of answer-related information to candidates, all copyright acknowledgements are reproduced in the OCR Copyright Acknowledgements Booklet. This is produced for each series of examinations and is freely available to download from our public website ([www.ocr.org.uk](http://www.ocr.org.uk)) after the live examination series.

If OCR has unwittingly failed to correctly acknowledge or clear any third-party content in this assessment material, OCR will be happy to correct its mistake at the earliest possible opportunity.

For queries or further information please contact the Copyright Team, First Floor, 9 Hills Road, Cambridge CB2 1GE.

OCR is part of the Cambridge Assessment Group; Cambridge Assessment is the brand name of University of Cambridge Local Examinations Syndicate (UCLES), which is itself a department of the University of Cambridge.