

WELSH JOINT EDUCATION COMMITTEE
General Certificate of Secondary Education



CYD-BWYLLGOR ADDYSG CYMRU
Tystysgrif Gyffredinol Addysg Uwchradd

150/06-A

ENGLISH

HIGHER TIER

PAPER 2

P.M. THURSDAY, 8 June 2006

Resource Material for use with Section A

Whether you're visiting Sheffield for a few hours or several days you're sure to find something of interest just around the next corner!

With award-winning museums and galleries, a remarkable industrial heritage and some of the best international sports facilities in the UK, there is a huge variety of things to enjoy. Add to this our acclaimed nightlife, excellent shopping and enviable programme of world class theatre and music, and you are spoilt for choice!

England's fourth largest city is a great place to visit. We hope that this guide will give you some ideas on what to see and do.... apart from enjoying the friendly Sheffield welcome of course!



Gardens and Open Spaces

With over 150 woodlands and 50 public parks, Sheffield is England's greenest city. The city centre boasts the stylish Peace Gardens and the magnificent Winter Garden - home to more than 2500 plant species from all over the world! Why not take a trip out to the Sheffield Botanical Gardens to see the wonderful Victorian Pavilions and discover the exotic plant collection?

- **Winter Garden**
Surrey Street, Sheffield, S1.
Tel: 0114 221 1900.
Open daily. Admission free.
- **Peace Gardens**
Pinstone Street, Sheffield, S1.
Tel: 0114 273 6895.
Open daily. Admission free.
- **Botanical Gardens**
Clarkehouse Road, Sheffield, S10.
Tel: 0114 267 6496.
Open daily. Admission free.

An Hour in Sheffield

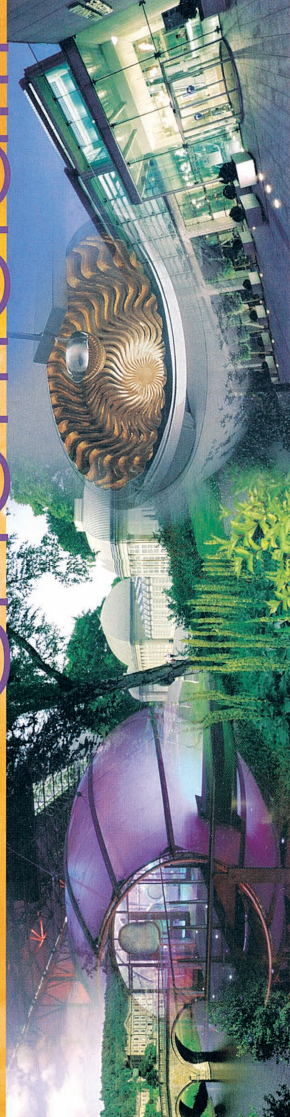
Even if you only have an hour to spare you can still enjoy some of the city centre sights! The Winter Garden makes a great starting point for a walking tour. Take in the beautiful architecture of the theatres, the Cathedral of St Peter and St Paul, the Town Hall and Sheffield City Hall or stroll through one of the city's art galleries.

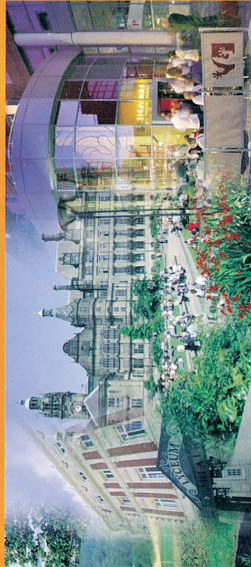
Shopping

The city centre, along Fargate, the Moor and Orchard Square, is home to numerous well-known retail brands. Independent stores and boutiques can be found in the Devonshire Quarter and along Ecclesall Road and for those looking for the more unusual purchase, why not visit the antiques quarter on Abbeydale Road? Sheffield is also fortunate to have one of Europe's largest shopping malls a short Supertram ride from the city centre. With more than 270 shops, Meadowhall is a shopper's paradise.

- **City Centre**
General opening Monday - Saturday.
9am - 5.30pm, Sunday varies.
- **Meadowhall**
Tel: 0845 600 6800. Open daily, times vary.

Sheffield





Useful Information

For public transport information, including bus and Supertram routes, call The Traveline on 01709 515151 or visit SYPTE at Cambridge Street or Sheffield Transport Interchange.

Sheffield also offers an enviable world class theatre and entertainment programme, plus some great restaurants and bars across the city.

Sheffield Theatres, tel: 0114 249 6000
 Sheffield City Hall, tel: 0114 278 9789
 Showroom Cinema, tel: 0114 275 7727
 Hallam FM Arena, tel: 0114 256 5656

What's On listings are featured in the Sheffield Star (daily), the Sheffield Telegraph (weekly) and on the What's On website at: www.shefinfo.org.uk

For more information about what to see and do or where to stay in Sheffield please call 0114 221 1900 or contact us on the following:

Sheffield Tourism Service
 Fax: 0114 281 4042
 Email: visitor@sheffield.gov.uk
 Web: www.sheffield.gov.uk

Activities

As a city used to hosting international sporting events, Sheffield has some of the best sporting facilities in Europe. This includes an Olympic size swimming and leisure pool complete with water slides, at Ponds Forge, and Europe's largest all season ski resort, Sheffield Ski Village. What's more, The Edge and The Foundry climbing centres offer some of the best indoor climbing facilities in the UK. Don't forget the numerous opportunities for walking and cycling in and around Sheffield and into the Peak District National Park. Why not try the Sheffield leg of the Trans Pennine Trail, suitable for walkers, cyclists and horse riders!

Ski Village

Vale Road, Sheffield, S3 9SJ. Tel: 0114 276 9459.

Open daily. Admission charge.

IceSheffield

Coleridge Road, Sheffield, S9 5DA. Tel: 0114 223 3900.

Open daily. Admission charge.

Ponds Forge International Sports Centre

Sheaf Street, Sheffield, S1 2BP. Tel: 0114 279 9766.

Open daily. Admission charge.

The Edge Climbing Centre

John Street, Sheffield, S2 4QU. Tel: 0114 275 8899.

Open daily. Admission charge.

The Foundry Climbing Centre

45 Mowbray Street, Sheffield, S3 8EN. Tel: 0114 279 6331.

Open daily. Admission charge.

Art Galleries

You will certainly find something to suit your taste in one of the city's many galleries. An outstanding collection of 19th and 20th century art in the Graves Art Gallery is complemented by the city's Millennium Galleries. A unique partnership with the TATE and V&A museums brings first class exhibitions from national galleries to the city. A programme of contemporary and cutting edge exhibitions is presented in a variety of Sheffield's other galleries.

Millennium Galleries (including the Ruskin Gallery)

Arundel Gate, Sheffield, S1 2PP. Tel: 0114 278 2600.

Open daily. Admission free, charges for touring exhibitions.

Site Gallery

1 Brown Street, Sheffield, S1 2BS. Tel: 0114 281 2077.

Open Tuesday – Saturday. Admission free.

Graves Art Gallery

Surrey Street, Sheffield, S1 1XZ. Tel: 0114 278 2600.

Open Monday – Saturday. Admission free.

History and Heritage

Famous for its steel, engineering and cutlery, Sheffield is known worldwide as the home of quality manufacturing. The story of its rich heritage is told in many of the city's museums and galleries - Kelham Island Industrial Museum is a great starting point, featuring a fully functioning steam engine and much more. If it's knives you came to see then you will not be disappointed in the Millennium Galleries' Metalwork Gallery. The Medieval and Victorian architecture of the Cathedral of St Peter and St Paul and Sheffield Town Hall should also not be missed and form part of the city centre walking tour.

Kelham Island Industrial Museum

Alma Street, Sheffield, S3 8RY. Tel: 0114 272 2106.

Open Monday – Thursday and Sundays. Admission charge.

Abbydale Industrial Hamlet

Abbydale Road South, Sheffield, S7 2QW. Tel: 0114 236 7731.

Open Monday – Thursday and Sundays. Admission charge.

Cathedral of St Peter and St Paul

Church Street, Sheffield, S1 1HA. Tel: 0114 275 3434.

Open daily. Admission free.

Metalwork Gallery

Millennium Galleries, Arundel Gate, Sheffield, S1 2PP. Tel: 0114 278 2600.

Open daily. Admission free.

Family Fun

Family fun is high on the agenda in Sheffield. At Magna, the UK's first science adventure centre, you can walk on air, feel the heat of a fire tornado, blast water cannons at human targets or take to the controls of a JCB! In Heeley City Farm, baby animals and green surroundings beckon, whilst younger visitors will love the interactive experience at Kelham Island Industrial Museum. Adults and children alike can climb aboard fire engines at the UK's largest Fire and Police Museum.

Magna

Sheffield Road, Rotherham, S60 1DX. Tel: 01709 720 002.

Open daily. Admission charge.

Fire and Police Museum

101-109 West Bar, Sheffield, S3 8PT. Tel: 0114 249 1999.

Open Sundays and Bank Holiday. Mondays. Admission charge.

Heeley City Farm

Richards Road, Sheffield, S2 3DT. Tel: 0114 258 0482.

Open daily. Admission free.

Kelham Island Industrial Museum

Alma Street, Sheffield, S3 8RY. Tel: 0114 272 2106.

Open Monday – Thursday and Sundays. Admission charge.

Sheffield...

