

Moderator's Report/  
Principal Moderator Feedback

Summer 2017

Pearson Edexcel GCSE in  
Manufacturing (5EG01)  
Paper 1: Engineering Design and  
Graphical Communication

### **Edexcel and BTEC Qualifications**

Edexcel and BTEC qualifications are awarded by Pearson, the UK's largest awarding body. We provide a wide range of qualifications including academic, vocational, occupational and specific programmes for employers. For further information visit our qualifications websites at [www.edexcel.com](http://www.edexcel.com) or [www.btec.co.uk](http://www.btec.co.uk). Alternatively, you can get in touch with us using the details on our contact us page at [www.edexcel.com/contactus](http://www.edexcel.com/contactus).

### **Pearson: helping people progress, everywhere**

Pearson aspires to be the world's leading learning company. Our aim is to help everyone progress in their lives through education. We believe in every kind of learning, for all kinds of people, wherever they are in the world. We've been involved in education for over 150 years, and by working across 70 countries, in 100 languages, we have built an international reputation for our commitment to high standards and raising achievement through innovation in education. Find out more about how we can help you and your students at: [www.pearson.com/uk](http://www.pearson.com/uk)

Summer 2017

Publications Code 5EG01\_01\_1706\_ER

All the material in this publication is copyright

© Pearson Education Ltd 2017

**Grade Boundaries**

Grade boundaries for this, and all other papers, can be found on the website on this link:

<http://www.edexcel.com/iwantto/Pages/grade-boundaries.aspx>

## **Engineering Design and Graphical Communication Introduction**

This was the seventh year of assessment for the specification. Centres submitted evidence of learners being required to design a wide range of products for manufacture.

This report makes reference to the key support documentation for 5EG01, which consist of:

- The unit specification for 2EG02
- The Teacher Support Book for Controlled Assessment for 2EG02 (see website)
- The Controlled Assessment Task for criterion e) for 5EG01 (see website)

The starting point for this unit is the design brief provided to learners. The format and content of the design brief is determined by the centre. Guidance is available to centres in the 2EG02 Specification, the Teacher Support Book and via website exemplars about the expected features of the design brief. Centres should appreciate that the quality and content of this design brief and associated specification will be a major factor in determining learners' ability to access the full range of marks across all criterion. When structuring the design brief centre staff might consider working from the end of the assessment criteria towards the beginning. That way they could consider "if my learners need to show they can do this for this criterion I need to give them this information in the design brief".

The design brief should balance the complexity of the task with the capabilities of the learners. Should the task require too complex a solution some learners will be unlikely to succeed. If the task can be solved simplistically then learners are unlikely to be able to demonstrate the full range of skills required to access the higher marking ranges.

The 5EG01 assessment criteria require learners to develop design ideas that relate to the function of a product, and not just the products physical appearance. Where learners tended to focus on aesthetics rather than function for the higher mark ranges these would not be accessible.

Quality of Written Communications (QWC) is assessed in 5 out of the 8 criteria but was rarely referred to specifically by centre staff. Assessment of QWC considers students' abilities to:

1. Write legibly, with accurate use of spelling, grammar and punctuation in order to make the meaning clear.
2. Select and use a form and style of writing appropriate to purpose and complex subject matter.
3. Organise relevant information clearly and coherently, using specialist vocabulary when appropriate.

Those criteria where QWC is assessed are indicated by the use of \* after the criterion title.

### **Administration**

The teacher guidance for the controlled assessment task includes the following paragraph that centres should take note of;

## Awarding marks

It is essential that you identify where you have recognised candidate achievement. Therefore you will need to complete the following Controlled Assessment Tracking Sheet for each candidate, with page numbers (to identify where the work can be found) and annotation (explaining the marks given against each criterion), and attach it to the candidate's portfolio.

The Controlled Assessment Tracking Sheet (CATS) is an essential source of information for the moderator, as it directs them as to where to find the relevant evidence. Without this being accurately completed the moderator could miss relevant evidence that the centre has given learners credit for. This lack of clarity could result in the moderator not agreeing the marks awarded by the assessor.

The example below, from this year's entries, illustrates how an effective CATS directs the reader to the appropriate sources of evidence. This is in contrast to those received with not annotation or page numbering.

Assessment Evidence	Annotation and Page Numbering	Centre mark
(a) Analysing the brief	Design brief 2 / client's needs 4 / Analysis of brief 3	3 /6
(b) Details of the design criteria and production constraints	Design specifications 5-6 / Analysis of brief 3	4 /6
(c) Ideas and design solutions	Initial ideas 7-8 / Developed designs 9-14	5 /6
(d) Testing and selecting the final solution	Testing against client's needs 17-21 / Made prototypes to test and develop final design solution 17-21	6 /6
(e) Interpreting engineering drawings and circuit diagrams	CA03 24 / CA04 25 / interpreting CA03 & CA04 26 Orthographic drawing with symbols 2/4	5 /6
(f) Selecting and using engineering drawing techniques	Initial designs 7-10 / CAD drawings 2D & 3D 11-13 Orthographic design 14	5 /6
(g) Producing engineering drawings	Use of a range of relevant symbols CAD drawings 11-13.	5 /8
(h) Presenting and modifying the final design solution	Final solution annotated 17-18 [client needs] Evaluation / Modifications 21-22 Feedback 23.	4 /6

Centres are also reminded of the importance of accurately calculating the total mark awarded to learners and the requirement to enter the same mark into the online or OPTEMS system. Where there are inaccuracies with the marks recorded for learners this may result in certification delays and additional administrations tasks.

## **Assessment Criteria**

Centres made good use of the expected evidence detailed in the teacher support book. Where there was a clear link between expected evidence, student work and teacher assessment students were able to access the full range of marks available. Where the expected evidence is absent from learners work it is unlikely they will achieve marks from the higher ranges.

### **Criterion (a) Analysing the brief**

In order to access the higher marks available for this criterion learners need to use the provided design brief to accurately explain the 'client's needs' and justify the 'key features' of the brief.

Learners consideration of client needs should include reference to cost, quantity required, intended market, timescales and product function. Of these factors timescales were frequently the least well addressed by learners. Centres could consider including details such as how long the learner has to complete the entire unit, how long they have to manufacture the prototype or deadlines for completion. This would then allow learners to comment on these later in the project.

Centres should also carefully consider the quantity of products they require the learners to design for. Where learners were required to design for batch or volume production this frequently added unneeded complexity to the design brief. A one-off prototype would be an accessible and appropriate quantity for most of the design briefs submitted this year for moderation.

Learners descriptions of key features should consider product performance, styling and aesthetics, size and quality standards. Of these quality standards were frequently the least successfully addressed by learners. When centres decide on the product that is the focus of the client brief they should ensure that relevant standards for the product are accessible to learners.

### **Criterion (b) Details of the design criteria and production constraints**

In order to access the higher marks available for this criterion learners firstly need to explain the product criteria and how their design proposals will address product performance, intended markets, maintenance requirements and size in their design proposals. This clearly links to their analysis from criterion (a).

Having determined what the client requires from the product learners then need to consider those factors that will constrain their proposals. They should take into account product regulations, cost, scale of production required, materials, quality standards and limitations of available machinery. Of these, the limitations availability of machinery tended to be overlooked by the majority of learners. This is something that centres might easily address, for example by requiring learners to research the production resources available to them. For example, if learners were to consider the potential use of vacuum forming for a solution they could explain the maximum size would be 300mm \* 400mm as this is the size of the bed on the available vacuum forming machine. In a similar manner learners could restrict their choice of materials to those available at the centre.

### **Criterion (c) Ideas and design solutions**

Learners should be encouraged to develop their design proposals such that they can demonstrate a wide range of drawing techniques. Again this links back to the initial design brief and specification provided by the centre. Where a successful design solution could be formulated by the learner without the need to include block, flow, schematic or circuit diagrams access to the high marks ranges is unlikely in subsequent criteria.

Centres should be aware that there are limited benefits of learners considering a wide range of alternative proposals. Rather than superficially considering numerous design proposals three design ideas considered in depth are more likely to provide access to the higher mark ranges. For this examination series only a minority of learners considered scientific principles or calculations as part of their proposals. Where learners tended to focus on aesthetics, and ignore the engineering function of their proposals, access to the higher mark ranges was limited in this and subsequent criteria.

This criterion is closely linked to criterion (f) Selecting engineering drawing techniques.

### **Criterion (d) Testing and selecting the final solution**

Those centres whose learners performed at the high marks ranges in this criterion tended to adopt similar approaches. Typically their approach consisted of the following.

- For three (or two) of the design proposals, physical prototypes were modelled on which some aspects of their performance were produced. These included CAD models of electronic circuits, breadboard circuits, models assembled from construction kits such as Lego, wood, card or foamboard models of mechanisms etc.
- These models were subjected to some form of objective testing. The tests were photographically recorded and annotated, before presenting to an audience to supply feedback for the learner to report back on.
- Results from tests were recorded objectively, displaying quantifiable data.
- This data was then used to select a final design proposal.
- The learners used this data, combined with their own preferences, to present a detailed justification of the final selected design proposal.

This approach contrasted with those centres whose learners tended not to access the higher mark ranges. Their approach typically consisted of the following.

- Attributes of products that only existed as drawings were considered.
- Comments are offered without evidence to support them. These would typically include comments related to cost (without any calculations), ergonomics and aesthetic appeal.
- The results learners presented tended to give the answers they wanted, rather than being used to gather useful information. Typically the first idea presented by learners would be the one with the best "results".

Where some learners did conduct high quality objective testing there was a slight tendency for them to not use the results of this testing to justify the selection of the final solution.

## **Criterion (e) Interpreting engineering drawings and circuit diagrams**

The Controlled Assessment Task for criterion (e) requires the interpretation of a specific Pearson set mechanical/electronic engineering drawings. Learners will respond to a standard set questions related to identification and explanation.

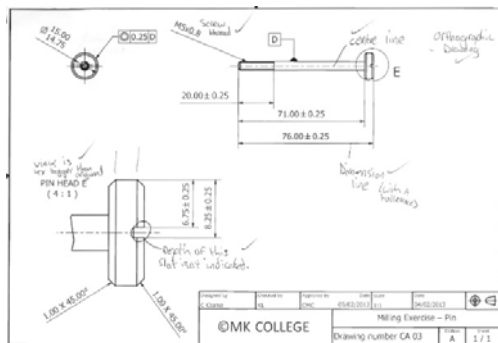
This task is reviewed regularly and the 2014-2017 version was the appropriate version for use during this series. Centres reading this report must ensure that they use the correct valid version for future cohorts.

This will be available from the Pearson website.

To help centres with the marking of this criterion a chart is attached to this report to use with centre marking. A copy of the chart should be sent with the sample to the moderator.



Centres should consider how they require learners to present their responses to the questions. The example below illustrates an approach that is both easy to follow and allows the learner to ensure they have answered all questions.



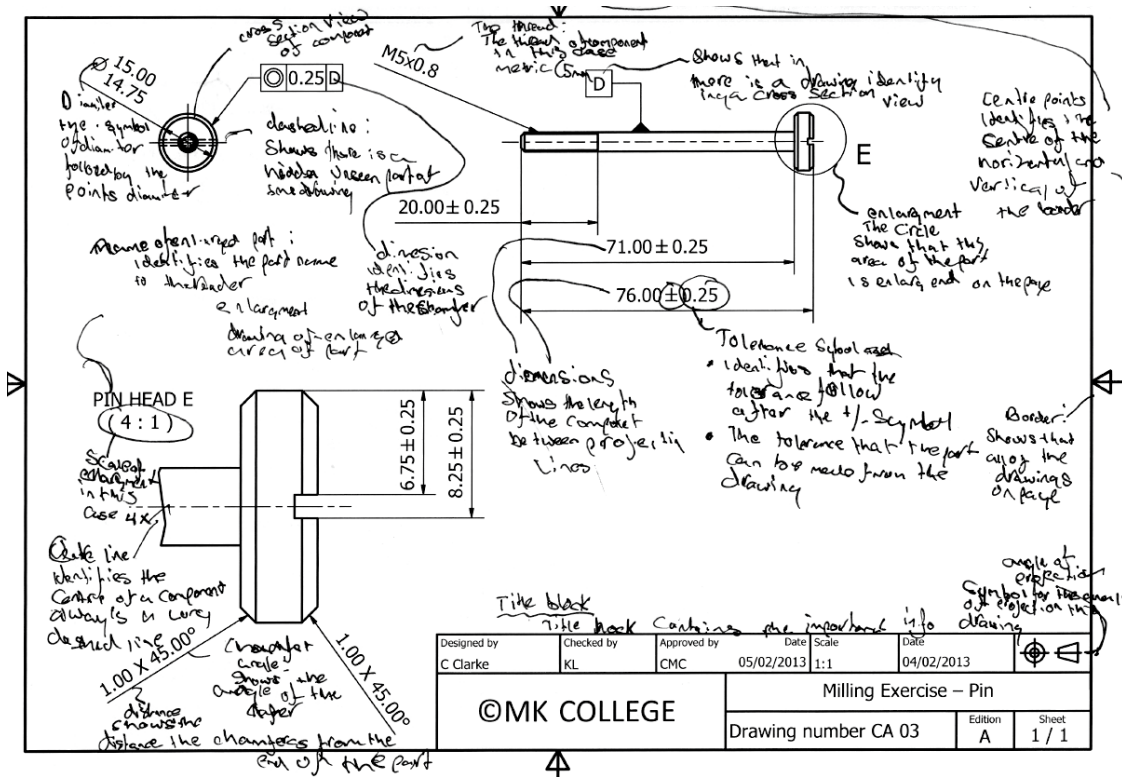
Question 2 CA03

- $\pm 0.25$  in relation to  $76.00$  means it can be  $76.25$  or  $75.75$  if its outside these quality dimensions it won't pass quality control.
- 3rd angle projection is shown by this symbol

Question 2 CA04

- Component R resists the flow of current protects ~~the~~ component behind it
- Stores electricity and releases it slowly. It can also be used with resistors to produce ~~the~~ a timer

This style of answer should be compared to the next example, where moderators may find it difficult to locate the correct information and the learner may not have answered all questions.



It is important that the work of this criterion is carried out under exam conditions. Learners should be supplied with the questions and drawings (2) that centres can find on-line (Pearson's/EDEXCEL) website. Some centres this year used computers but it is unlikely these would be available (or desirable) in an exam area of the centre concerned. Some equipment should be brought by the learners (rulers, pencils, erasers, compasses, etc.). Extra paper may be provided for the Question 2 answers which will take up more space.

Following the test, centres should then mark the work and enter their marks on the chart provided. The total mark will then form the basis of what is entered in Criterion e on the CATS sheet. A copy of the chart completed by the centre should be sent with the sample to the moderator.


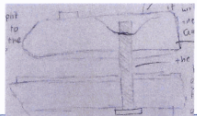




For Question 1, which comprises of 6 questions related to drawing CA03 and 5 related to drawing CA 04. 2 marks are available. Answers in all cases should be clearly and accurately drawn or annotated using the relevant sector specific standards.

For question 2, 1 mark is available for the correct answer to each of the four questions, comprising of 2 related to drawing CA 03, and 2 related to drawing CA 04.

## Criterion (f) Selecting engineering drawing techniques

This criterion requires learners to provide two types of evidence. Firstly they need to consider the type of drawing, purpose and intended audience for a range of drawing techniques. In order to access the high mark range learners need to consider freehand sketches, perspective drawings, block and flow diagrams, schematic diagrams, circuit diagrams, 1st/3rd angle orthographic projections, assembly diagrams and exploded diagrams.

A successful approach used by some centres was for learners to present this information in a table, of the type shown below.

Name of drawing	Internet drawing	My drawing	Description of drawing
Assembly Diagram people that are designing items and they have to see the inside to see the parts on the inside so they gat them all correct			Assembly diagram is a method for visually representing three-dimensional objects in two dimensions in technical and engineering drawings
Isometric projection for people that maybe need to see how many sides a part or object needs to have.			Isometric projection is a method for visually representing three-dimensional objects in two dimensions in technical and engineering drawings
Free hand sketches. An artist or designer would use this type of drawing because they need them maybe for a car design they are bringing out in several years to come.			drawn or executed by <b>hand</b> without guiding instruments, measurements, or other aids=

Secondly learners need to demonstrate the use of a range of these techniques to communicate details of their final design solutions. As highlighted in previous sections if the design brief does not require learners to demonstrate this range of techniques potential access to the higher mark ranges will be limited.

## Criterion (g) Producing engineering drawings

For this criterion learners should produce drawings that include orthographic projection and circuit diagrams (electrical/electronic and/or pneumatic/hydraulic). Parts and components need to be included for higher mark ranges, which makes assembly drawings and exploded views appropriate for the highest score. These drawings should be produced both manually and through CAD. The evidence for this criterion will come from the drawings produced by the learner throughout the project.

Use of sector specific standards is expected, as well as the correct drawing outline and title blocks.

This criterion has a larger mark allocation of 8, compared to other criteria where the maximum mark is 6. These marks are awarded for the demonstration of drawing skills (manual and CAD). Some centres this year did not use manual drawing and were there restricted in the marks to MB1 or MB3 (not MB3).

Learners were able to access the full range of marks available for this criterion. Where learners had access to appropriate CAD packages some very skilful drawings were evidenced.

### **Criterion (h) Presenting and modifying the final design solution**

The final criterion of the unit requires learners to compare their design proposals with the design brief to determine the extent to which the design meets the clients' requirements. This comparison and the portfolio are then used to present their design proposals to a client, typically this was the teacher that assessed the unit, their class group, or an industrial link near to their school or college.

The learner should then use the feedback from the client to identify and describe further modifications to improve their proposal. These descriptions of the modifications were often successfully evidenced by learners through the production of amended drawings. All centres will have received a centre report from the moderator which gives details of these criterion and there will be helpful comments to plan for next year.