

Answer ALL questions in Section A and Section B.

SECTION A

Answer ALL questions in this section. Write your answers in the spaces provided.

1. All of the products listed below belong to a manufacturing sector.

(a) Tick the **two** boxes below where the products belong to the **textiles** sector.

Product	Tick two boxes below
Tablecloth	
Windscreen wiper	
Bedsread	
Pasta sauce	
Games console	
Metal curtain rail	

(2)

(b) Tick the **two** boxes below where the products belong to the **clothing** sector.

Product	Tick two boxes below
Satellite navigation system	
Parka jacket	
Windsurfing sail	
Wrought iron fence	
Flip-flops	
Shopping catalogue	

(2)

Q1

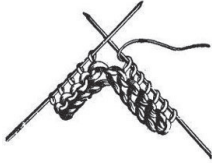

(Total 4 marks)



2. The tables below show some equipment used in the manufacture of textiles or clothing products.

(a) Complete **Table 1** by naming the equipment.

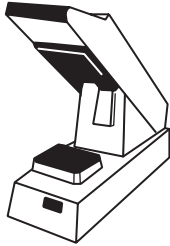
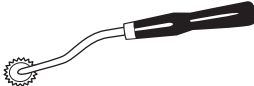
Table 1

Equipment	Equipment name	Use
		To create different stitches with wool to produce a garment or fabric.
		Used to cut fabric accurately and efficiently.

(2)

(b) Complete **Table 2** by explaining the use of the equipment.

Table 2

Equipment	Equipment name	Use
	Heat seal machine	
	Tracing wheel	

(4)

Q2

(Total 6 marks)



3. Draw a straight line to link each term listed below to the correct key area.

Each key area can be used more than once.

Term

Key area

Polyvinylchloride (PVC)

(1)

Information and communications technology (ICT)

Embedded computers

(1)

Presentation software

(1)

Control technology

Microfibres

(1)

Thermostat

(1)

Modern materials

Voice over internet protocol (VoIP)

(1)

(Total 6 marks)

Q3



4. Mass produced replica football shirts belong to the textiles and clothing sector.

(a) (i) Name **one** other product from this sector, apart from a replica football shirt, that utilises, in its manufacture, information and communications technology and a modern material.

..... (1)

(ii) Explain the purpose of the product.

.....
.....
..... (2)

(b) (i) Name **one** stage in the manufacture of the product you gave in 4(a)(i) where information and communications technology is used.

..... (1)

(ii) Explain **one** advantage to the **manufacturer** of using information and communications technology at this stage.

.....
.....
..... (2)

(c) (i) State **one** modern material used in the manufacture of the product you named in 4(a)(i).

..... (1)

(ii) Describe how this modern material improves the characteristics of the product.

.....
.....
.....
..... (2)

(Total 9 marks)

Q4



5. Computer-aided design (CAD) and communications technology are used by manufacturers of textiles and clothing products.

(a) (i) Give **two** examples of **how** CAD is used by a manufacturer.

Example 1

Example 2

(2)

(ii) Using an example from 5(a)(i), explain **one** benefit to the **manufacturer** of using CAD.

.....

.....

.....

(2)

(b) (i) Give **two** examples of a communications technology as used by a manufacturer.

Example 1

Example 2

(2)

(ii) Using an example from 5(b)(i), explain **one** benefit to the **manufacturer** of using communications technology.

.....

.....

.....

(2)

(Total 8 marks)

Q5



6. (a) Smart materials are used in some textiles and clothing products.

Explain the term 'smart material'.

.....
.....
.....

(2)

(b) Computer-aided manufacture (CAM) is used by manufacturers of textiles and clothing products.

Explain **three** benefits to a manufacturer of using CAM.

Benefit 1

.....

(2)

Benefit 2

.....

(2)

Benefit 3

.....

(2)

(Total 8 marks)

Q6



7. (a) Control technology is an essential feature in textiles and clothing product manufacture.

Explain the impact of control technology on safety when manufacturing.

.....
.....
.....
.....

(2)

(b) Handling information and data is an essential feature of textiles and clothing manufacturers.

Explain how the use of information and data handling systems benefit the manufacturer, when marketing products.

.....
.....
.....
.....

(2)

(Total 4 marks)

Q7

TOTAL FOR SECTION A: 45 MARKS



BLANK PAGE

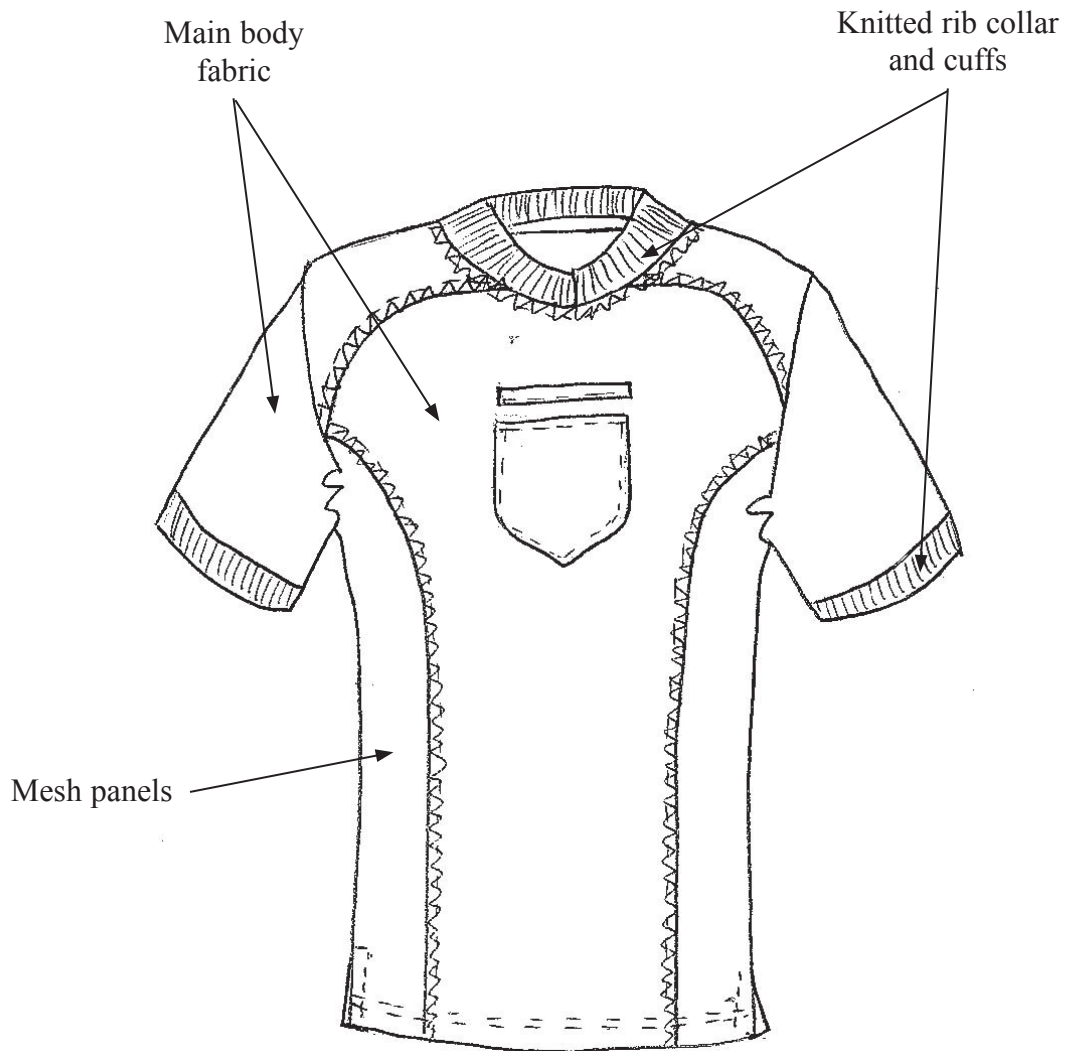
TURN OVER FOR SECTION B



SECTION B

Answer ALL questions in this section with reference to the manufacture of mass produced, replica football shirts. Write your answers in the spaces provided.

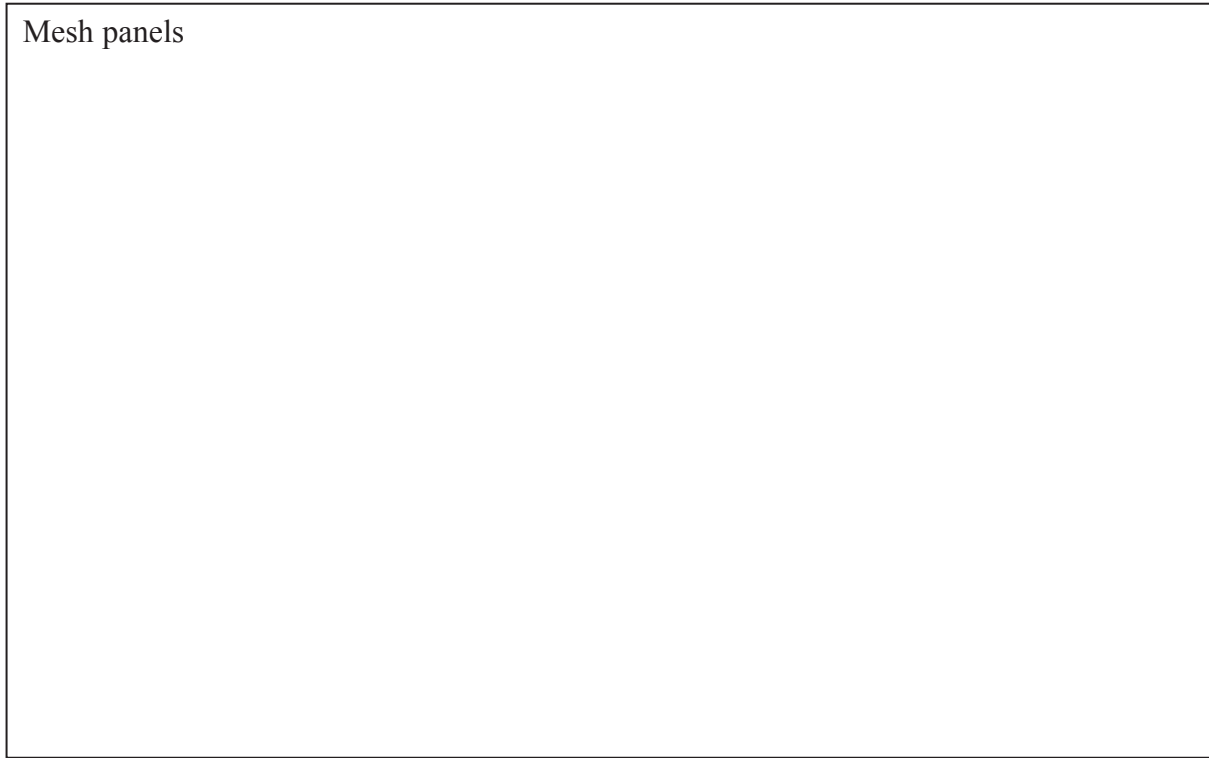
The diagram below shows a mass produced replica football shirt.



8. In the boxes below, describe, using notes and sketches:

(a) the function of the mesh panels

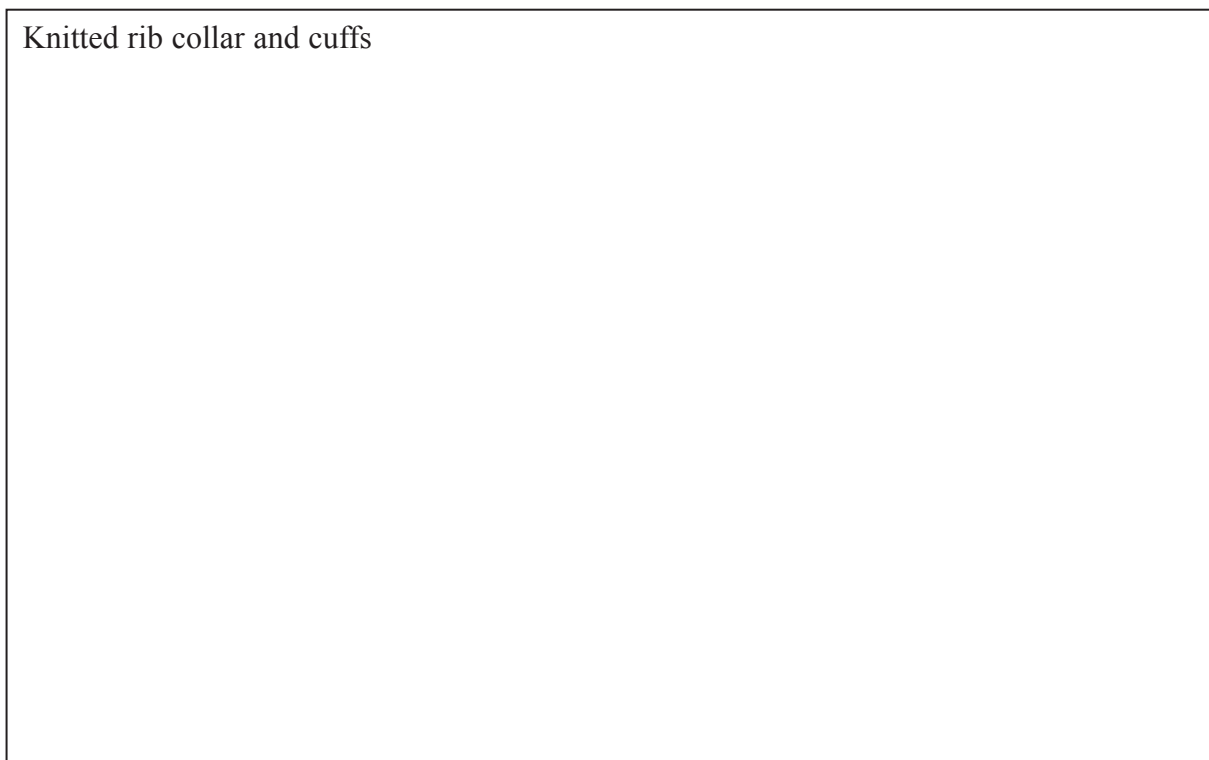
Mesh panels



(3)

(b) the function of the knitted rib collar and cuffs.

Knitted rib collar and cuffs



(3)

(Total 6 marks)

Q8



9. (a) The following table indicates some of the main stages in manufacturing mass produced replica football shirts.

(i) Complete the table below by giving the **two** missing stages in manufacturing mass produced replica football shirts.

Stages in manufacturing	
1	Design
2	Marketing
3	
4	
5	Production
6	Assembly and Finishing
7	Packaging and Dispatch

(2)

(ii) State the stage in manufacturing where the mass produced replica football shirts are delivered to **retailers**.

Stage

(1)

(b) Describe the following **two** stages in the manufacture of mass produced replica football shirts.

(i) Design

.....

.....

.....

.....

(3)

(ii) Production

.....

.....

.....

.....

(3)

(Total 9 marks)

Q9



10. (a) Name a specific main body fabric used in the manufacture of mass produced replica football shirts.

.....
(1)

(b) Heat seal printing is used to apply a logo/design onto the surface of the mass produced replica football shirts.

(i) State **three** processes, other than heat seal printing, used during the making of mass produced replica football shirts.

Process 1

Process 2

Process 3

(3)

(ii) Explain why heat seal printing is a suitable process for applying a logo/design onto the surface of the mass produced replica football shirts.

.....
.....
.....
.....
.....

(3)

(c) Explain how the use of modern materials has made mass produced replica football shirts appeal to the **consumer**.

.....
.....
.....
.....
.....
.....

(3)

(Total 10 marks)

Q10

--	--



11. (a) Describe **two** quality control procedures used at the production stage when manufacturing mass produced replica football shirts.

(i) Quality control procedure 1

.....
.....
(2)

(ii) Quality control procedure 2

.....
.....
(2)

(b) Explain **one** benefit of applying each quality control procedure, described in 11(a), to the **manufacturer**.

(i) Benefit of procedure 1

.....
.....
(2)

(ii) Benefit of procedure 2

.....
.....
(2)

(c) Explain **one** benefit of applying each quality control procedure, described in 11(a), to the **retailer**.

(i) Benefit of procedure 1

.....
.....
(2)

(ii) Benefit of procedure 2

.....
.....
(2)

(Total 12 marks)

Q11

--	--



12. The utilisation of modern technology in the manufacture of mass produced replica football shirts has brought changes.

(a) (i) State **one** change the use of modern technology has had on the workforce.

.....
(1)

(ii) Explain **two** different effects this change has had on the workforce.

Effect 1

.....
(2)

Effect 2

.....
(2)

(b) State **one** change the use of modern technology has had on the working environment.

.....
(1)

(c) Explain **two** benefits the use of modern technology has had on the global environment.

Benefit 1

.....
(2)

Benefit 2

.....
(2)

(Total 10 marks)

Q12

--	--

TURN OVER FOR QUESTIONS 13 AND 14



13. Modern materials are used in the manufacture of mass produced replica football shirts.

Explain how the use of modern materials has impacted on development and final product costs.

.....

.....

.....

.....

.....

.....

.....

.....

.....

.....

.....

(Total 4 marks)

Q13

14. Manufacturing mass produced replica football shirts uses energy. Modern embellishment processes operate more efficiently than traditional processes.

Explain why the use of modern embellishment processes may lead to **increased** energy consumption.

.....

.....

.....

.....

.....

.....

.....

.....

.....

.....

.....

(Total 4 marks)

Q14

TOTAL FOR SECTION B: 55 MARKS
TOTAL FOR PAPER: 100 MARKS

END

