



*Rewarding Learning*

General Certificate of Secondary Education

---

# Engineering and Manufacturing

Unit 2

*assessing*

Production

**[GEM21]**

**Assessment**

---

**TIME**

3 hours.

**Assessment Level of Control:**

Tick the relevant box (✓)

Controlled Conditions	
Other	

**INSTRUCTIONS TO CANDIDATES**

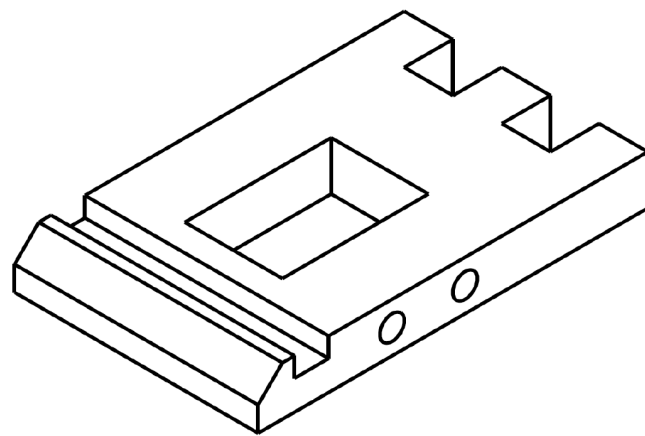
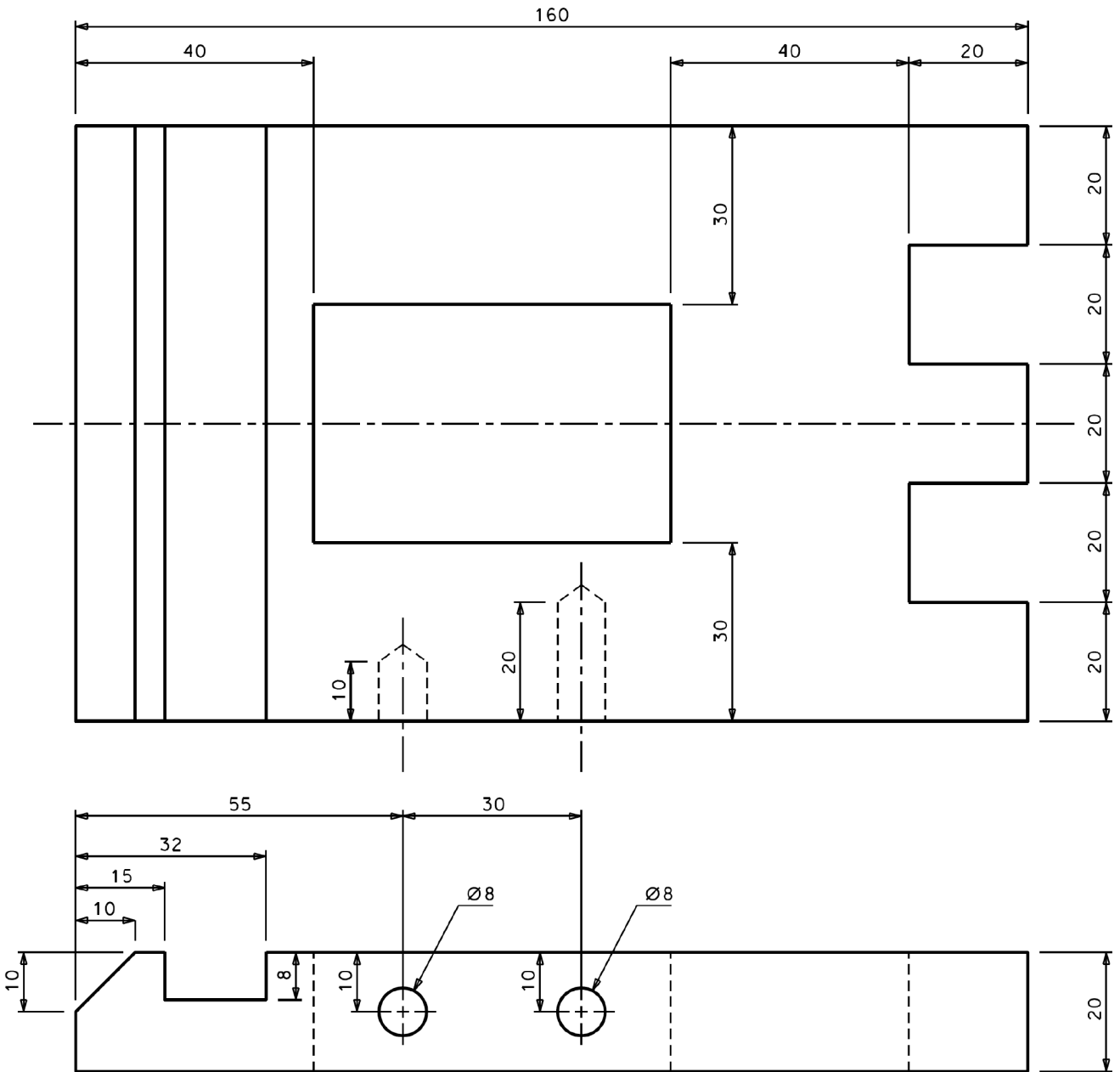
Candidates are expected to complete **all** parts of the manufacturing task from the drawings supplied using the equipment and the materials provided by the centre.

Candidates are advised to spend the first 10 minutes reading the drawings.

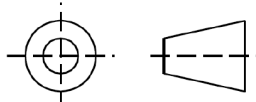
Candidates must apply Health and Safety procedures at all times.

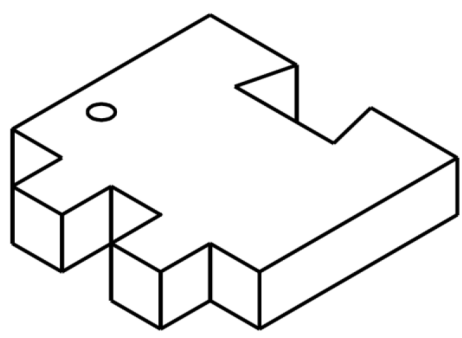
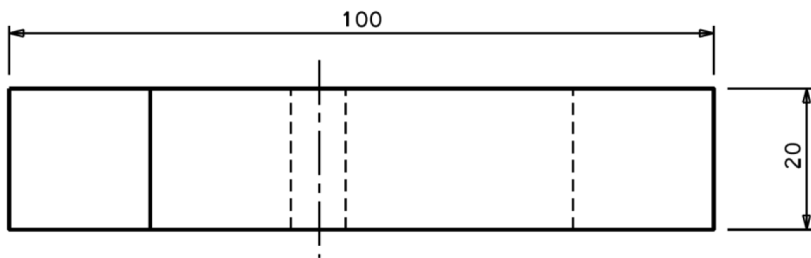
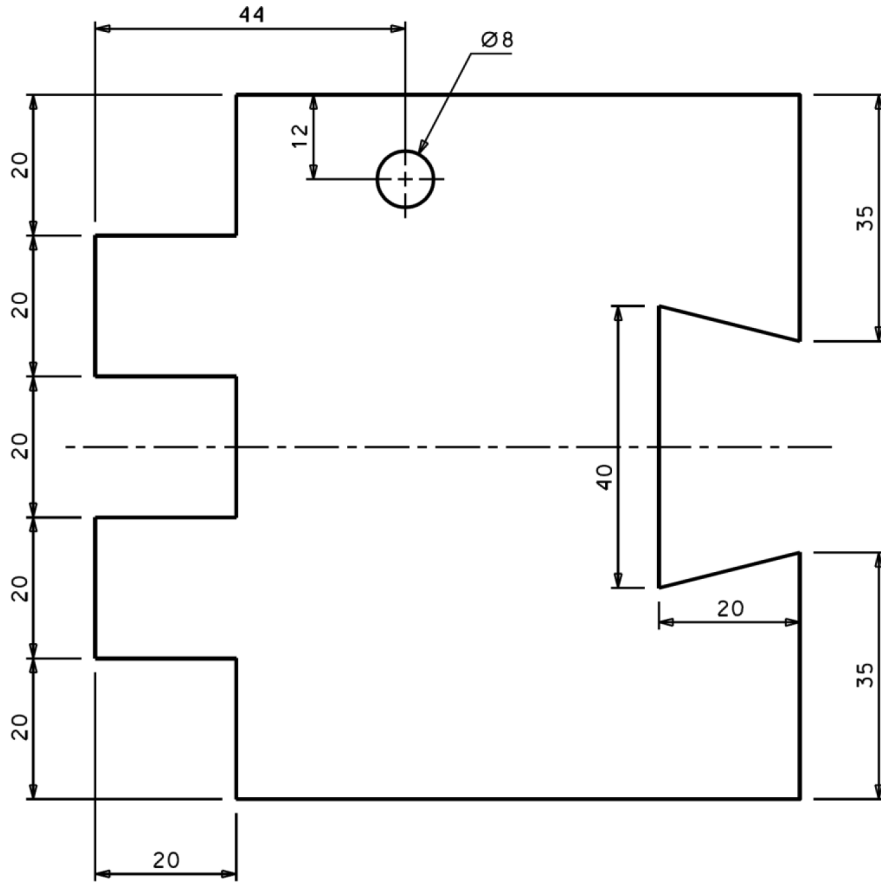
**INFORMATION FOR CANDIDATES**

The total mark for this practical examination is **100**.



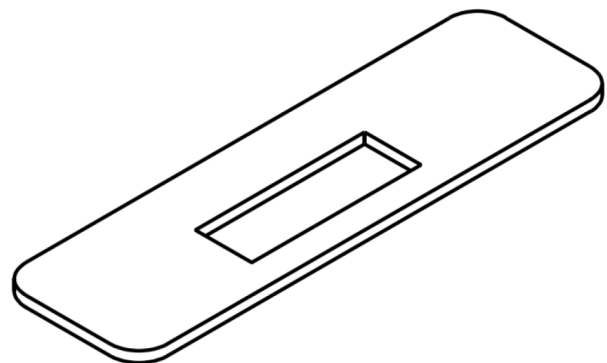
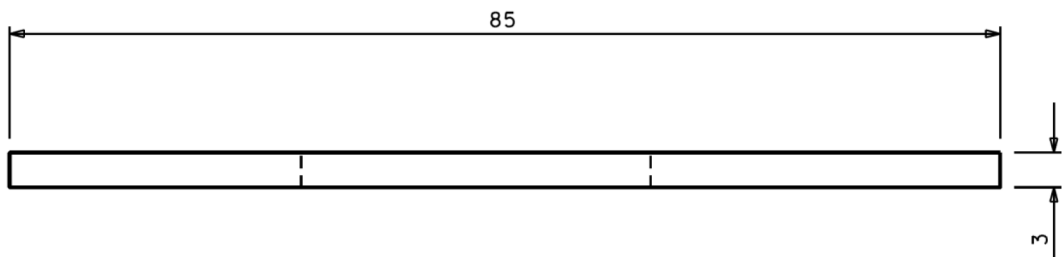
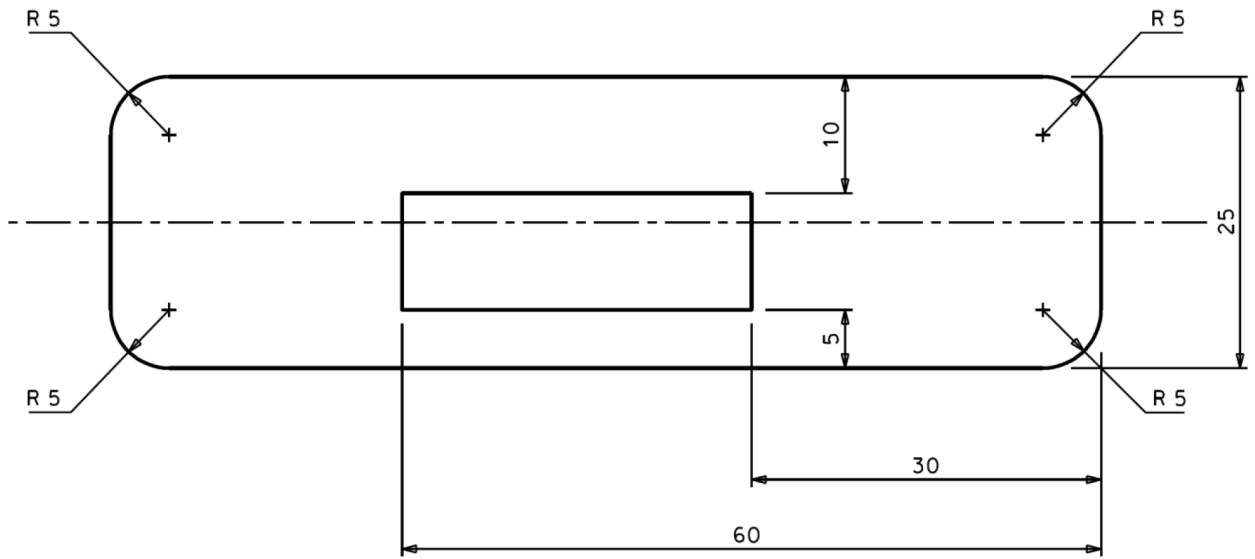
Notes  
Pencil lines to be removed.

CCEA	Dimensions in mm Do not scale	Unit 2	Part 1	 Third angle projection
GCSE Engineering and Manufacturing	Tolerance +/- 1mm	Material 20mm thick Jelutong 160mm x 100mm		

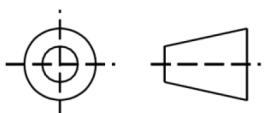


Notes  
Pencil lines to be removed.

CCEA	Dimensions in mm Do not scale	Unit 2	Part 2	 Third angle projection
GCSE Engineering and Manufacturing	Tolerance +/- 1mm	Material 20mm thick Jelutong 100mm x 100mm		



Notes  
 Draw filed finish  
 No sharp edges

CCEA	Dimensions in mm Do not scale	Unit 2	Part 3	 Third angle projection
GCSE Engineering and Manufacturing	Tolerance +/- 0.5mm	Material 25mm x 3mm bright mild steel strip.		







Permission to reproduce all copyright material has been applied for.  
In some cases, efforts to contact copyright holders may have been unsuccessful and CCEA  
will be happy to rectify any omissions of acknowledgement in future if notified.