



*Rewarding Learning*

**General Certificate of Secondary Education**

**2019**

---

# **Engineering and Manufacturing**

**Unit 2**

*assessing*

**Production**

**[GEM21]**

**WEDNESDAY 8 MAY, MORNING**

---

## **TIME**

3 hours.

## **INSTRUCTIONS TO CANDIDATES**

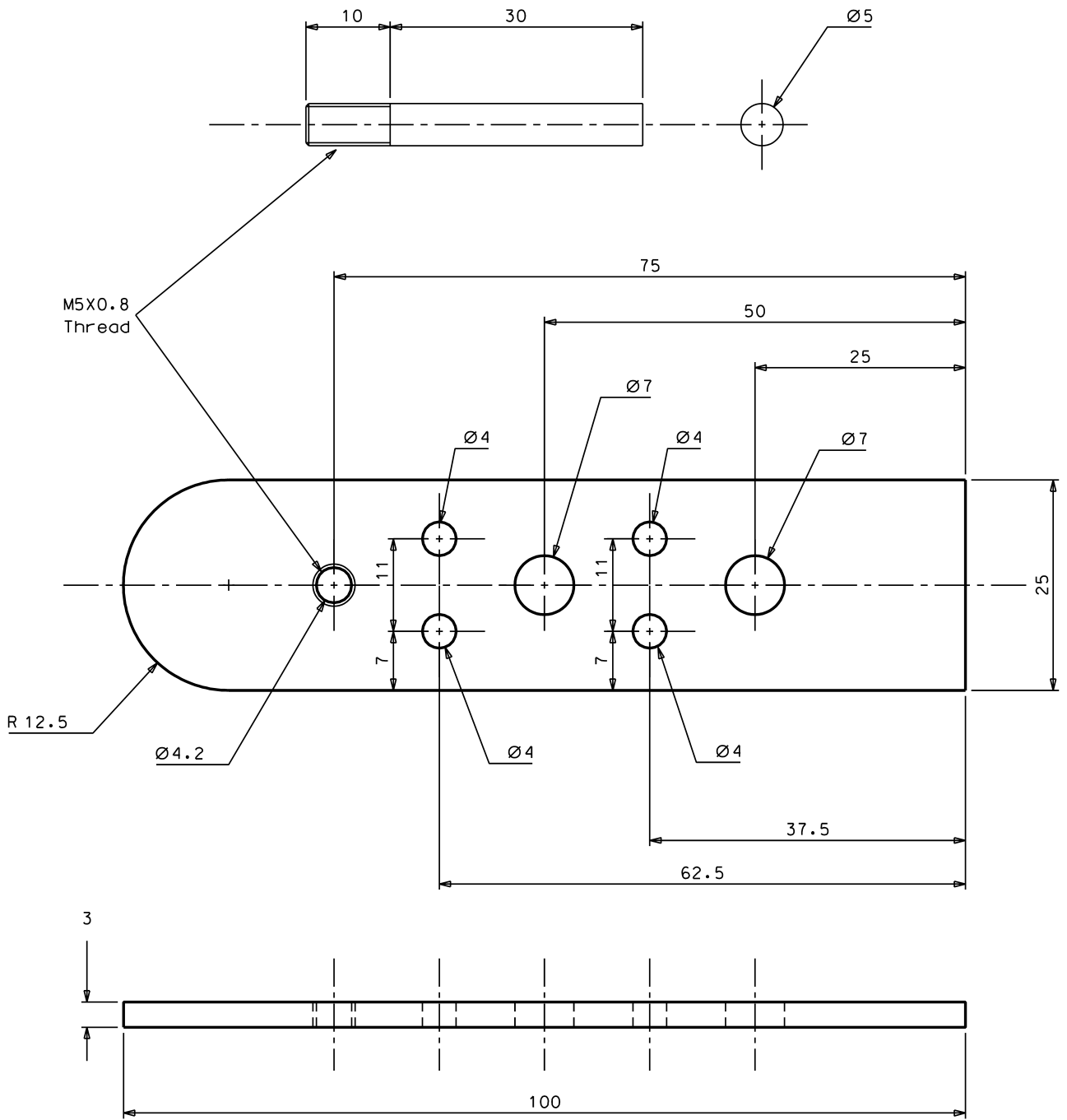
Candidates are expected to complete both parts of the manufacturing task from the drawings supplied using the equipment and the materials provided by the centre.

Candidates are advised to spend the first 10 minutes reading the drawings.

Candidates must apply Health and Safety procedures at all times.

## **INFORMATION FOR CANDIDATES**

The total mark for this practical examination is **100**.



M5X0.8  
Thread

R 12.5

$\varnothing 4.2$

$\varnothing 4$

$\varnothing 7$

$\varnothing 4$

$\varnothing 7$

$\varnothing 4$

$\varnothing 4$

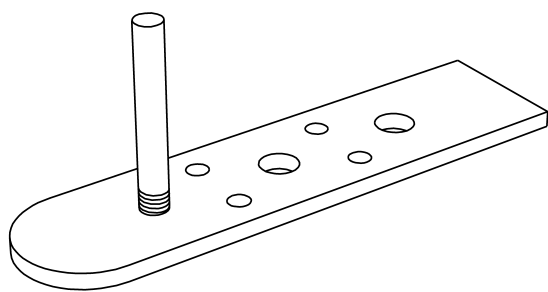
37.5

62.5

3

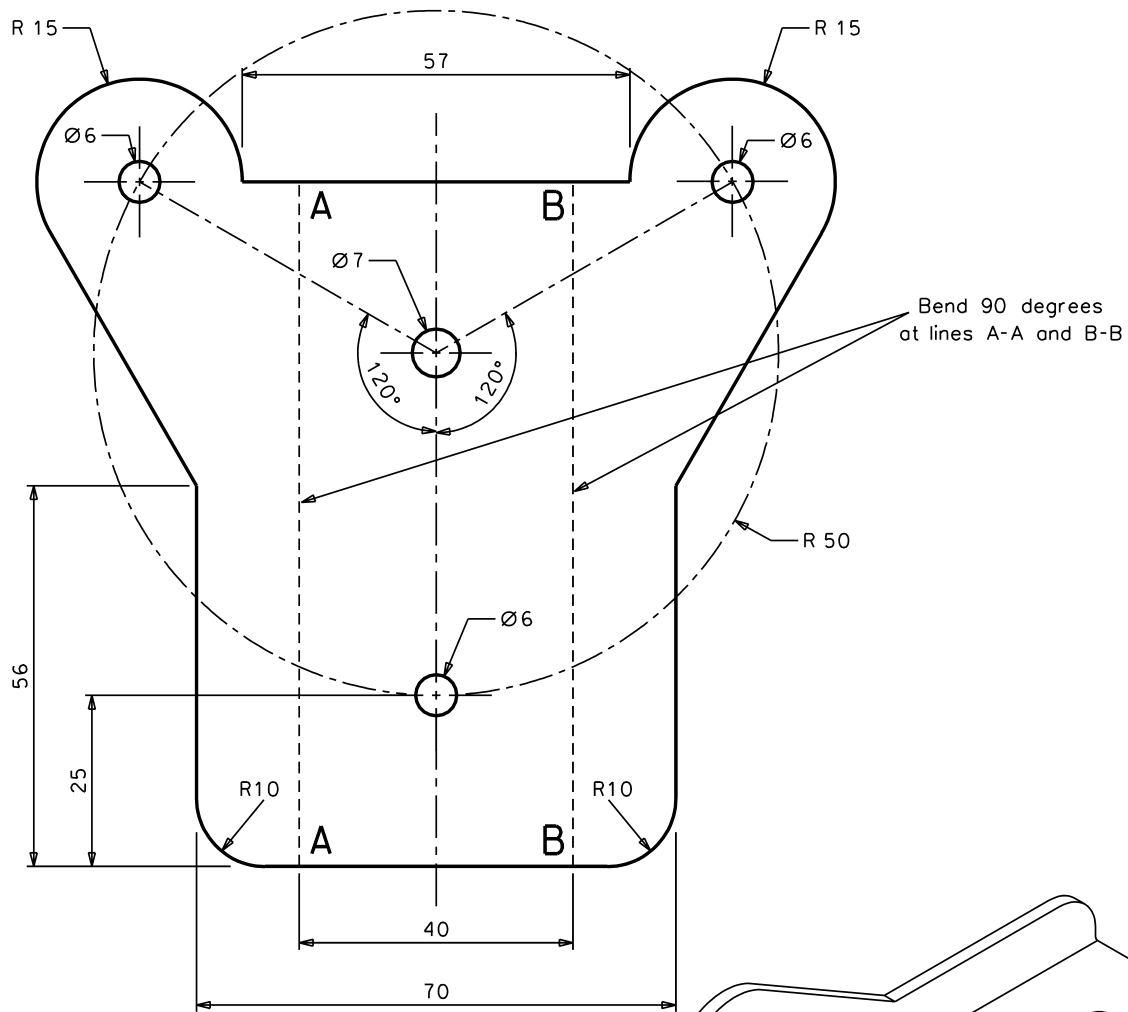
100

25

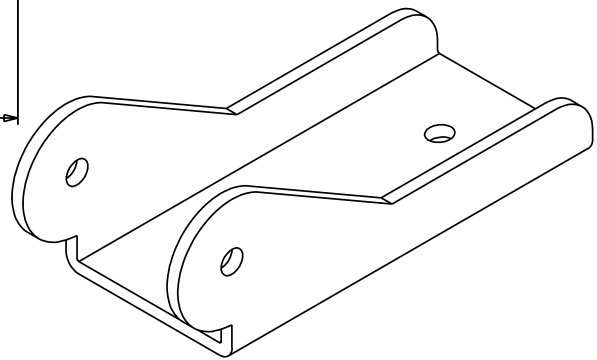


Notes  
All parts cleaned  
Draw filed finish  
No sharp edges

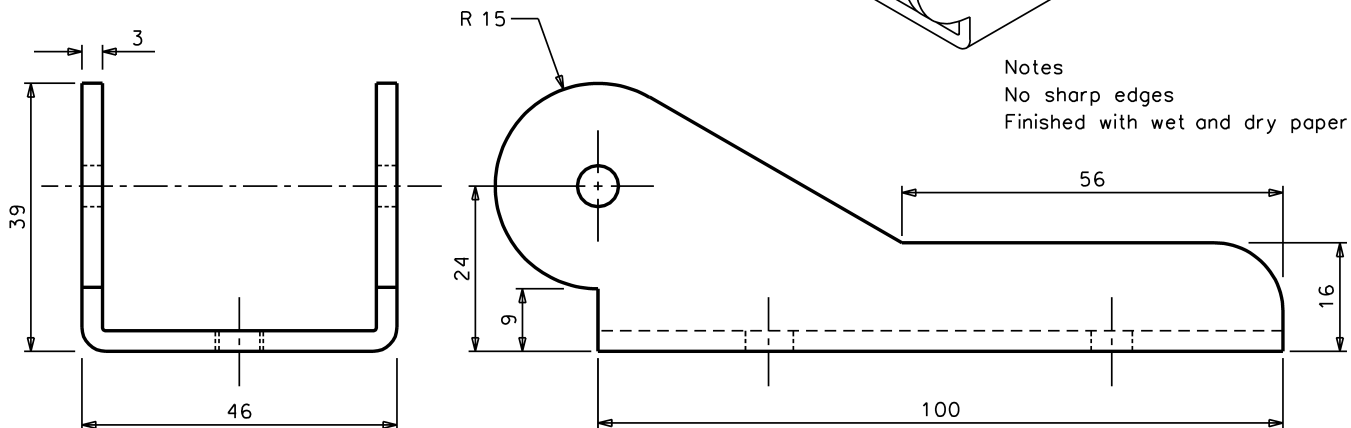
CCEA	Dimensions in mm Do not scale	Unit 2	Part 1	<p>Third angle projection</p>
GCSE Engineering and Manufacturing	Tolerance +/- 0.5mm	Material 3mm x 25mm bright mild steel flat 5mm diameter mild steel round bar		

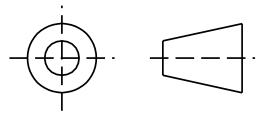


Bend 90 degrees at lines A-A and B-B



Notes  
No sharp edges  
Finished with wet and dry paper



CCEA	Dimensions in mm Do not scale	Unit 2	Part 2	 Third angle projection
GCSE Engineering and Manufacturing	Tolerance +/- 0.5mm	Material 3mm Acrylic sheet		

Permission to reproduce all copyright material has been applied for.  
In some cases, efforts to contact copyright holders may have been unsuccessful and CCEA  
will be happy to rectify any omissions of acknowledgement in future if notified.