

Friday 23 May 2014 – Afternoon

GCSE ECONOMICS

A592/01 How the Economy Works

Candidates answer on the Question Paper.

OCR supplied materials:

None

Other materials required:

- Calculators may be used

Duration: 1 hour



Candidate forename		Candidate surname	
--------------------	--	-------------------	--

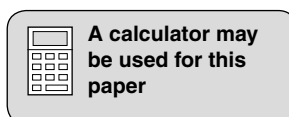
Centre number						Candidate number				
---------------	--	--	--	--	--	------------------	--	--	--	--

INSTRUCTIONS TO CANDIDATES

- Write your name, centre number and candidate number in the boxes above. Please write clearly and in capital letters.
- Use black ink. HB pencil may be used for graphs and diagrams only.
- Answer **all** the questions.
- Read each question carefully. Make sure you know what you have to do before starting your answer.
- Write your answer to each question in the space provided. If additional space is required, you should use the lined pages at the end of this booklet. The question number(s) must be clearly shown.
- Do **not** write in the bar codes.

INFORMATION FOR CANDIDATES

- The number of marks is given in brackets [] at the end of each question or part question.
- The total number of marks for this paper is **60**.
- The quality of your written communication will be taken into account in the marking of your answers to the questions labelled with an asterisk (*).
- This document consists of **16** pages. Any blank pages are indicated.



Answer **all** questions.

1 Fig. 1 shows the level of UK unemployment between 2008 and 2011.

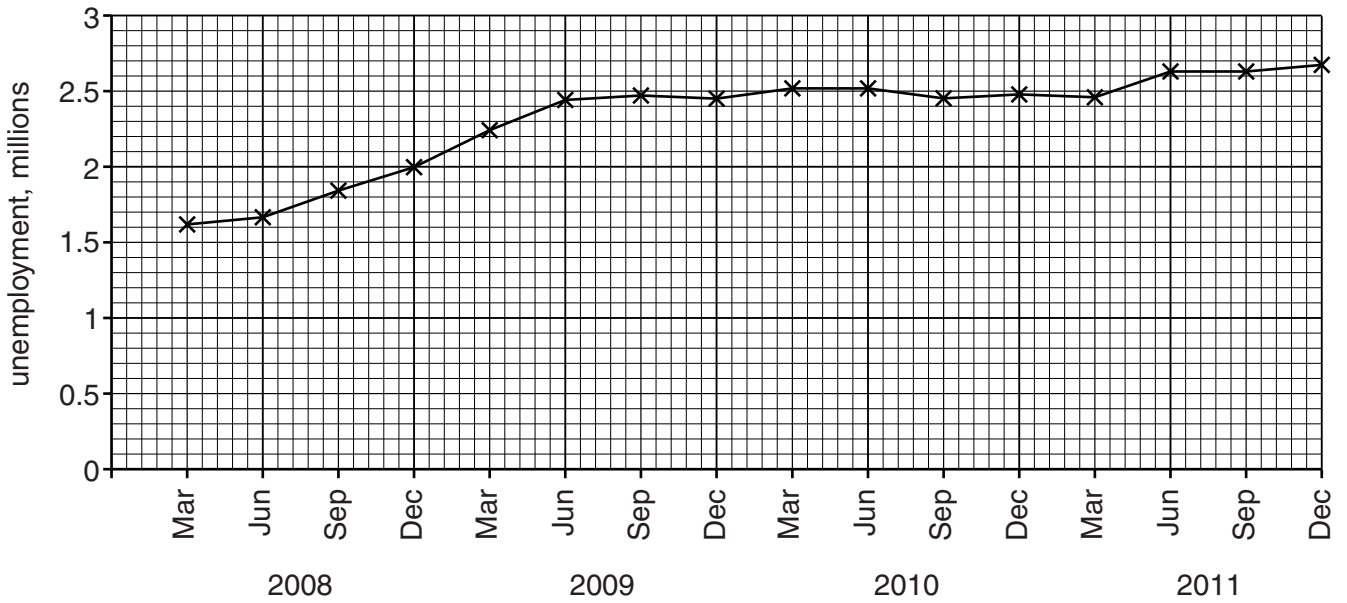


Fig. 1 – UK unemployment (millions), 2008–11

(a) Use the information in Fig. 1 to describe what happened to the level of unemployment between March 2008 and December 2011.

.....

.....

.....

..... [2]

(b) (i) Identify the **two** methods by which the UK government measures unemployment.

1

2 [2]

(ii) Explain the cause of seasonal unemployment.

.....

.....

.....

..... [2]

(c) Explain **two** policies which the UK government could use to increase employment.

Policy 1

.....

.....

.....

.....

.....

.....

.....

.....

.....

Policy 2

.....

.....

.....

.....

.....

.....

.....

.....

.....

[6]

5
BLANK PAGE

Question 2 begins on page 6

PLEASE DO NOT WRITE ON THIS PAGE

2 Fig. 2 shows the UK Bank rate (also known as the base rate) as set by the Bank of England's Monetary Policy Committee. The Bank rate is shown for the period July 2007 to November 2012.

(a) Using the information in Fig. 2, calculate the difference in the UK Bank rate between May 2008 and November 2012. Show your working.

.....
.....
.....
..... [2]

(b) Other than the UK Bank rate, explain **two** factors which affect the rate of interest on loans.

Factor 1
.....
.....
.....

Factor 2
.....
.....
.....

[4]

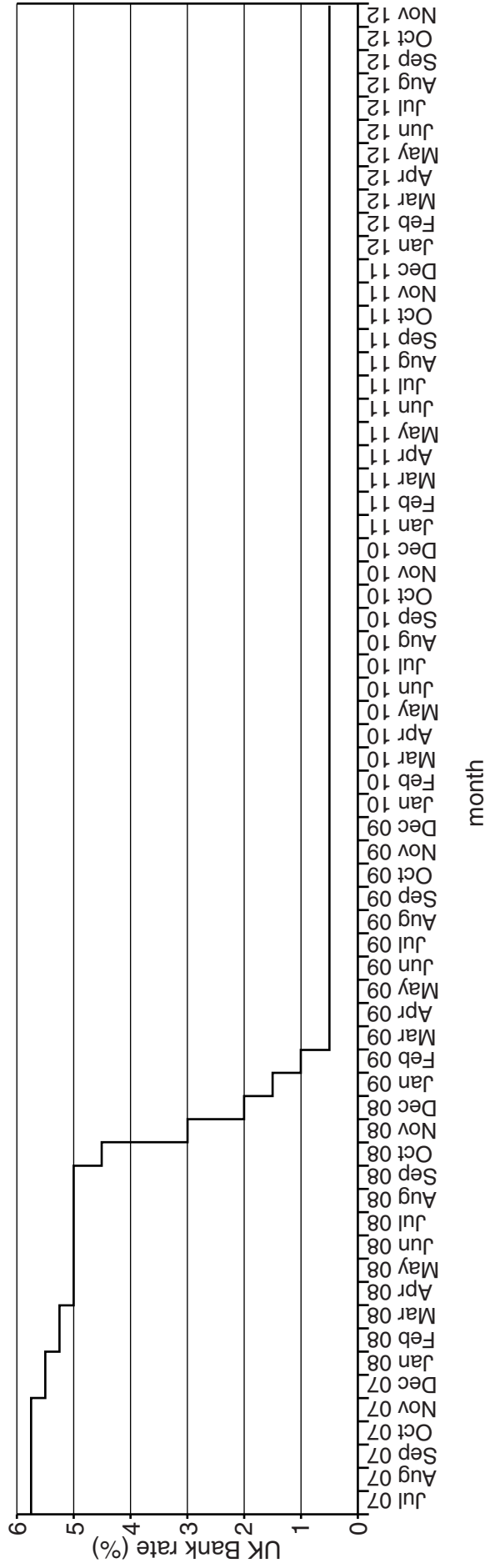


Fig. 2 – UK Bank rate, 2007–12

(c) (i) Would savers benefit from the trend shown in Fig. 2? Explain your answer.

.....
.....
.....
..... [2]

(ii) Explain why the trend shown in Fig. 2 could encourage spending in the economy.

.....
.....
.....
.....
.....
.....
.....
.....
..... [4]

3 Fig. 3 shows estimated UK government tax revenue for the year 2012–13.

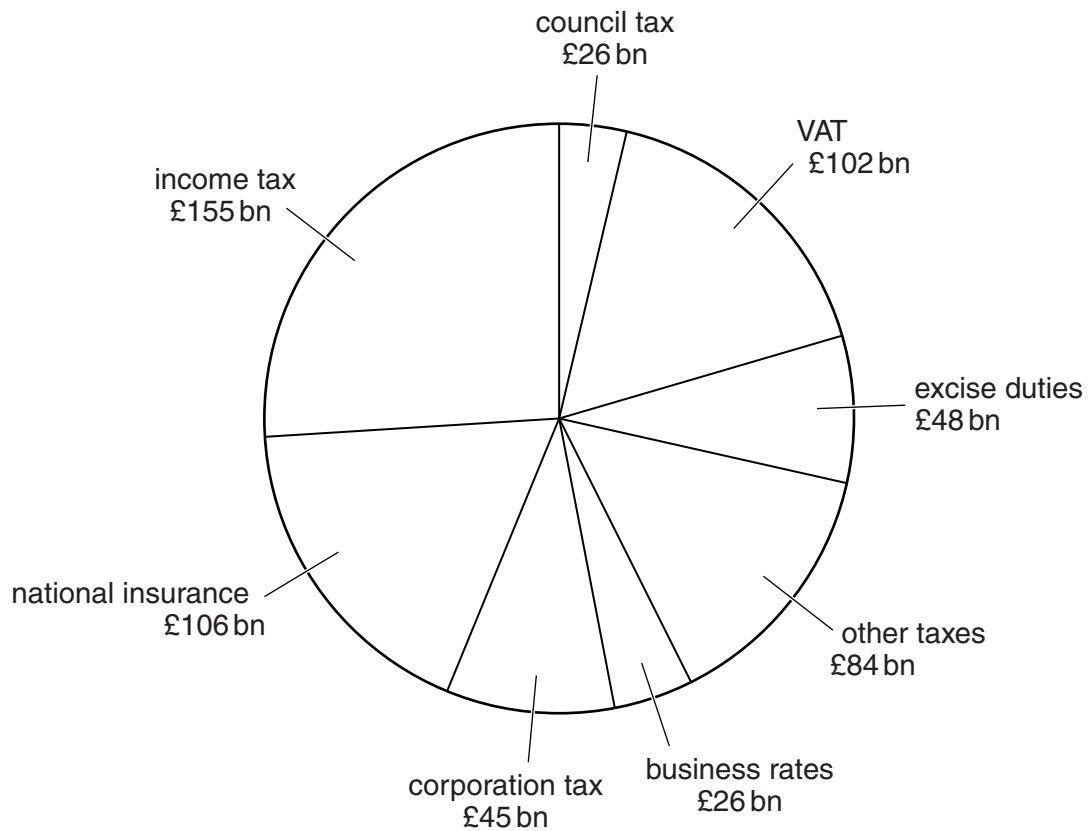


Fig. 3 – Estimated UK government tax revenue, 2012–13 (total = £592 bn)

(a) Using Fig. 3, identify:

- a direct tax

.....

- an indirect tax.

.....

[2]

(b) (i) Definitions of two taxes are given below. Identify the tax in Fig. 3 which matches each definition.

- Tax on company profits

.....

- Tax on the purchase of goods and services

.....

[2]

(ii) Estimated government spending in 2012–13 was £683 bn.

Using Fig. 3, calculate the estimated budget deficit for 2012–13. Show your working.

.....

.....

.....

..... [2]

ADDITIONAL ANSWER SPACE

If additional answer space is required, you should use the following lined page(s). The question number(s) must be clearly shown in the margins.

A large area of lined paper for writing answers. It features a vertical margin line on the left side and horizontal dotted lines for writing. The lines are evenly spaced and extend across the width of the page.

PLEASE DO NOT WRITE ON THIS PAGE



Copyright Information

OCR is committed to seeking permission to reproduce all third-party content that it uses in its assessment materials. OCR has attempted to identify and contact all copyright holders whose work is used in this paper. To avoid the issue of disclosure of answer-related information to candidates, all copyright acknowledgements are reproduced in the OCR Copyright Acknowledgements Booklet. This is produced for each series of examinations and is freely available to download from our public website (www.ocr.org.uk) after the live examination series.

If OCR has unwittingly failed to correctly acknowledge or clear any third-party content in this assessment material, OCR will be happy to correct its mistake at the earliest possible opportunity.

For queries or further information please contact the Copyright Team, First Floor, 9 Hills Road, Cambridge CB2 1GE.

OCR is part of the Cambridge Assessment Group; Cambridge Assessment is the brand name of University of Cambridge Local Examinations Syndicate (UCLES), which is itself a department of the University of Cambridge.