

Oxford Cambridge and RSA Examinations
General Certificate of Secondary Education

DESIGN AND TECHNOLOGY (TEXTILES TECHNOLOGY)

1958/2
1058/2

PAPER 2
Higher Tier

Specimen Paper 2003

Additional materials: None

TIME 1 hour 15 minutes

Candidate Name	Centre Number	Candidate Number												
	<table border="1" style="width: 100%; height: 100%;"> <tr> <td style="width: 20px; height: 20px;"></td> <td style="width: 20px; height: 20px;"></td> <td style="width: 20px; height: 20px;"></td> <td style="width: 20px; height: 20px;"></td> <td style="width: 20px; height: 20px;"></td> <td style="width: 20px; height: 20px;"></td> </tr> </table>							<table border="1" style="width: 100%; height: 100%;"> <tr> <td style="width: 20px; height: 20px;"></td> <td style="width: 20px; height: 20px;"></td> <td style="width: 20px; height: 20px;"></td> <td style="width: 20px; height: 20px;"></td> <td style="width: 20px; height: 20px;"></td> <td style="width: 20px; height: 20px;"></td> </tr> </table>						

INSTRUCTIONS TO CANDIDATES

- Write your name, Centre number and Candidate number in the boxes above.
- Answer **all** the questions.
- Write your answers, in blue or black ink, in the spaces provided on the question paper.
- Read each question carefully and make sure you know what you have to do before starting your answer.

INFORMATION FOR CANDIDATES

- The number of marks is given in brackets [] at the end of each question or part question.
- The total number of marks for this paper is **50**.

Question number	For examiner's use only
1	
2	
3	
4	
5	
TOTAL	

1 A party of teenagers is going to France on a day trip. Each teenager will need a bag for their belongings.

(a) Complete the specification below by adding **three** further design requirements for the bag.

- Must be easy to carry and leave hands free
- Must have a detachable purse for small items
- _____
- _____
- _____

[3]

(b) A close weave nylon fabric is to be used to make the bag.
Give **two** reasons why this is a suitable fabric to use.

[2]

(c) A prototype of the bag will be made by the manufacturer.
What is a prototype?

[2]

(d) Small valuable items are stored in the detachable purse.
Suggest a suitable method of attaching this purse to the main part of the bag.

[3]

Total [10]

2 The glove puppet in Fig. 1 is part of a range of children's toys.

HEDGEHOG GLOVE PUPPET

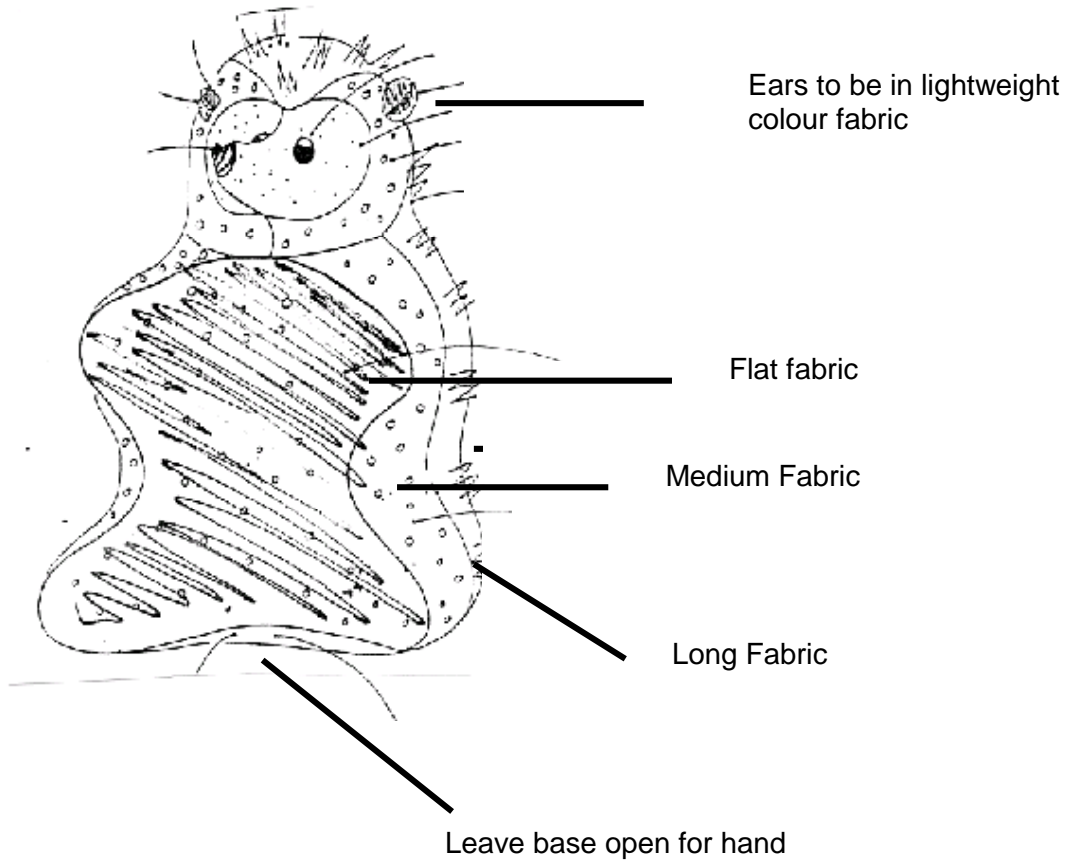


Fig. 1

(a) Give **two** points to include in the specification for the puppet.

[2]

[Question 2 continued on next page]

Question 2 - continued

- (b)** What is the main benefit of cutting out the fabric puppet components using CAM (Computer Aided Manufacture)?

- (c)** During the manufacture of a batch of puppets, quality is monitored.
Choose two features on the puppet and for each identify a quality control check.

Feature 1 _____

[2]

Feature 2 _____

[2]

- (d)** Children can be at risk from poorly designed textile products.
Suggest **two** ways to ensure the puppet is safe for a child.

[2]

Total [10]

- 3** A toy manufacturer is looking to extend its existing range of hand puppets on an animal theme.
- (a)** Sketch and annotate a suitable design for your prototype toy puppet.
Show important design features.

[4]

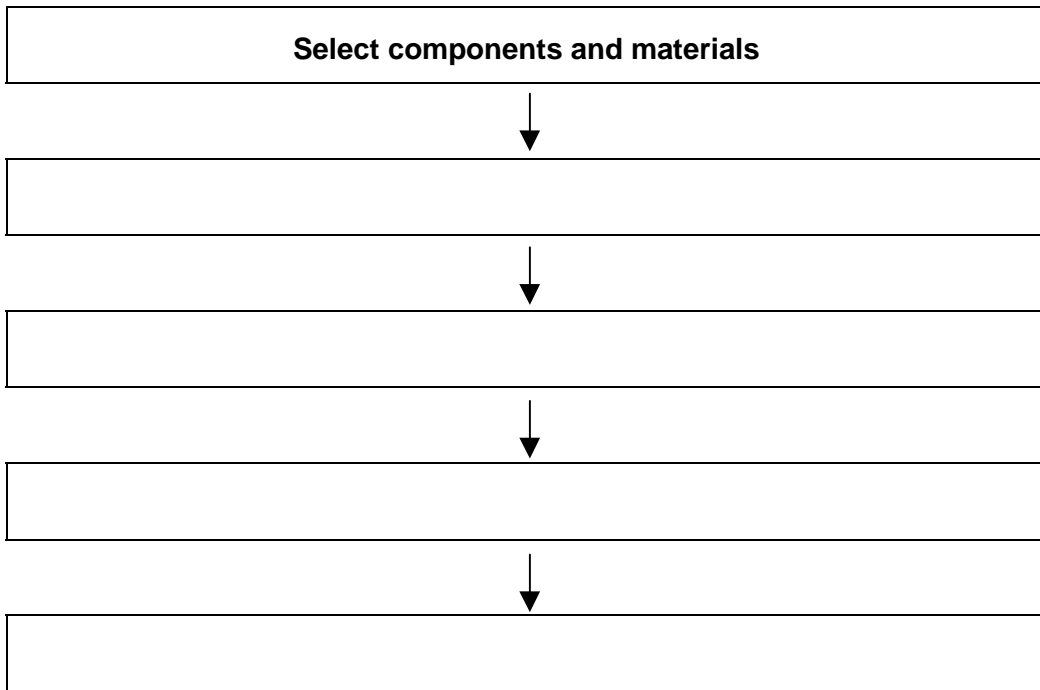
[Question 3 continued on next page]

Question 3 – continued

(b) Describe a simple abrasion test to help select a suitable fur fabric for the puppet.

[2]

(c) Complete the block diagram below to show an order of work for the manufacture of the puppet.



[4]

Total [10]

4 Look at Fig. 2 below.

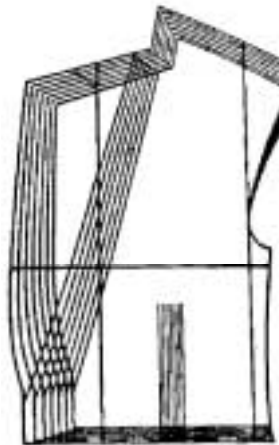


Fig 2

(a) Explain what the diagram means.

[2]

(b) Manufacturers may use CAD (Computer Aided Design) at various stages in the design and production of patterns, shapes and blocks.

Explain the ways in which CAD is used in the process of pattern production.

[6]

[Question 4 continued on next page]

Question 4 - continued

- (c) A commercial pattern can be expensive to buy.

Give **two** considerations you would look for that would make it more economical to use.

[2]

Total [10]

5 The design shown below is for a summer suit and is based on traditional clothing.



Fig. 3

(a) (i) Identify the origins of the fashion influences on this design.

[2]

(ii) The proposed fabric is a plain weave raw silk.
Why is this an appropriate choice for the design?

[1]

[Question 5 continued on next page]

Question 5 continued

(b) The suit is to go into mass production.

Complete the table below to show the production stages involved after the design has been finalised and before fabric can be cut.

STAGE	ACTIVITY
1. Design	Ideas, proposals for fabric, trimmings, construction. Specification.
2.	
3.	
4.	
5. Lay Planning	Need to devise most efficient way of laying out pattern pieces on fabric to avoid waste.

[3]

(c) Explain how computer software could be used to aid production at one of these stages.

[2]

[Question 5 continued on next page]

Question 5 continued

- (d) Complete the table below to show the criteria you would use in assessing the quality of workmanship in this production system.

Features	Criteria
Seams	
Collar	

[2]

Total [10]

BLANK PAGE