

**Oxford Cambridge and RSA Examinations**  
**General Certificate of Secondary Education**

**DESIGN AND TECHNOLOGY (TEXTILES TECHNOLOGY)**  
PAPER NUMBER 1  
Foundation Tier

**1958/1**  
**1058/1**

**Specimen Paper 2003**

Additional materials: None

**TIME** 1 hour

Candidate Name	Centre Number	Candidate Number												
	<table border="1" style="width: 100%; height: 100%;"> <tr> <td style="width: 20px; height: 20px;"></td> <td style="width: 20px; height: 20px;"></td> <td style="width: 20px; height: 20px;"></td> <td style="width: 20px; height: 20px;"></td> <td style="width: 20px; height: 20px;"></td> <td style="width: 20px; height: 20px;"></td> </tr> </table>							<table border="1" style="width: 100%; height: 100%;"> <tr> <td style="width: 20px; height: 20px;"></td> <td style="width: 20px; height: 20px;"></td> <td style="width: 20px; height: 20px;"></td> <td style="width: 20px; height: 20px;"></td> <td style="width: 20px; height: 20px;"></td> <td style="width: 20px; height: 20px;"></td> </tr> </table>						

**INSTRUCTIONS TO CANDIDATES**




- Write your name, Centre number and Candidate number in the boxes above.
- Answer **all** the questions.
- Write your answers, in blue or black ink, in the spaces provided on the question paper.
- Read each question carefully and make sure you know what you have to do before starting your answer.

**INFORMATION FOR CANDIDATES**

- The number of marks is given in brackets [ ] at the end of each question or part question.
- The total number of marks for this paper is **50**.

Question number	For examiner's use only
<b>1</b>	
<b>2</b>	
<b>3</b>	
<b>4</b>	
<b>5</b>	
<b>TOTAL</b>	

- 1 (a) Complete the chart below. State what each item of textile equipment is called and what it is used for.

	Name of Item	Use
	_____ <b>Shears</b>	_____
	_____	_____
	_____	<b>Marking fabric</b>

[4]

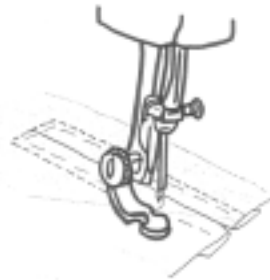
- (b) A textiles technology student has decided to buy a sewing machine for her course. List **four** features that the student should look for when buying a machine.

- 1 \_\_\_\_\_ [1]
- 2 \_\_\_\_\_ [1]
- 3 \_\_\_\_\_ [1]
- 4 \_\_\_\_\_ [1]

[Question 1 continued on next page]

**Question 1 - continued**

- (c) The item in Fig. 1 was included in the purchase of the sewing machine.



**Fig. 1**

- (i) Describe the purpose of this machine attachment.

---

---

[2]

**Total [10]**

2 (a) A manufacturer produces a variety of cushion covers that fit a standard foam cushion pad. The covers are made from a natural fibre.

(i) Name a suitable natural fibre.

\_\_\_\_\_

[1]

(ii) Explain **one** method in which the manufacturer could put a design onto a cushion cover.

\_\_\_\_\_

\_\_\_\_\_

\_\_\_\_\_

[3]

(iii) Using this method draw a suitable design on the cushion cover shown below.



Fig. 2

[2]

[Question 2 continued on next page]

(b) The opening of the cushion cover will be at the back, as shown in fig. 3.

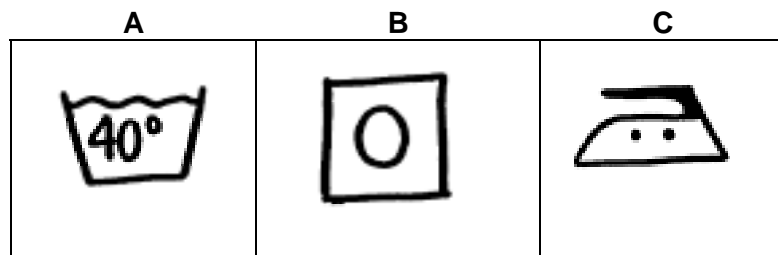


Fig. 3

(i) Suggest a suitable method of fastening.

\_\_\_\_\_ [1]

(ii) Textile manufacturers are required to attach care labels to products.  
Give the meaning for each of the symbols.



A \_\_\_\_\_ [1]

B \_\_\_\_\_ [1]

C \_\_\_\_\_ [1]

**Total [10]**

- 3 Denim has been a popular fabric for clothing for many years.  
Below shows a design proposal for an unlined waistcoat in denim.

(a) Add to the diagram further design features.

[3]

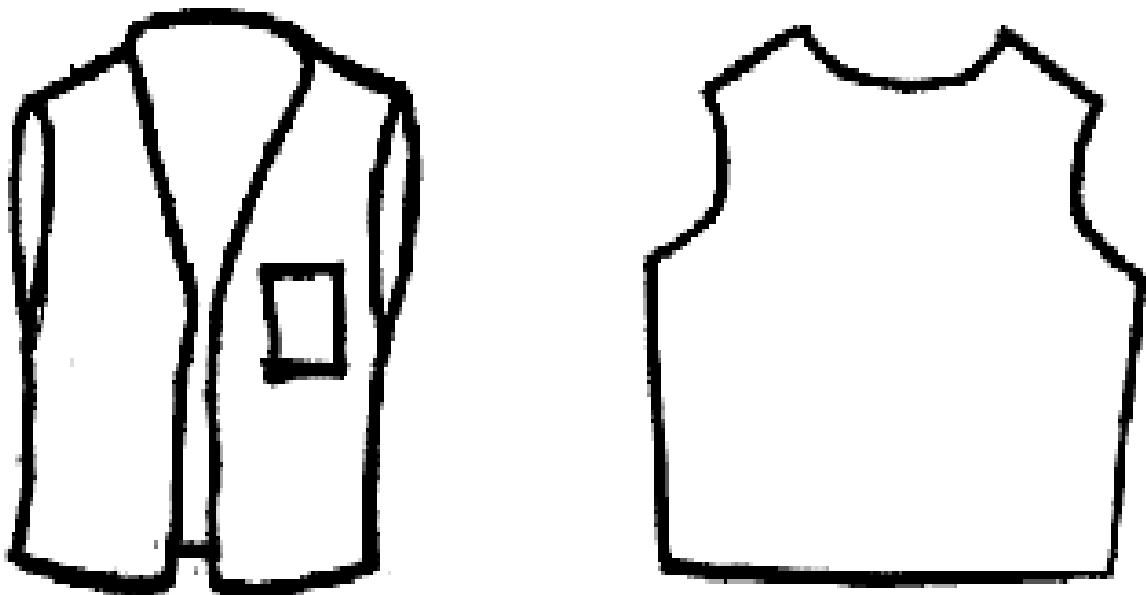
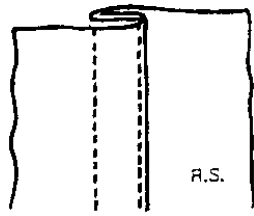


Fig. 4

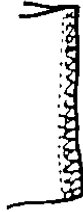
[Question 3 continued on next page]

**Question 3 - continued**

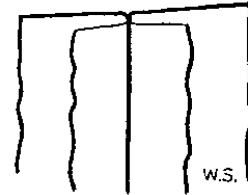
The diagrams below show three different seams which could be used to construct the waistcoat.



**A: Double Stitched**



**B: Overlocked**



**C: Open**

**Fig. 5**

- (b)** Choose the most suitable seam to join the fabric.  
Give a reason for your choice.

---

---

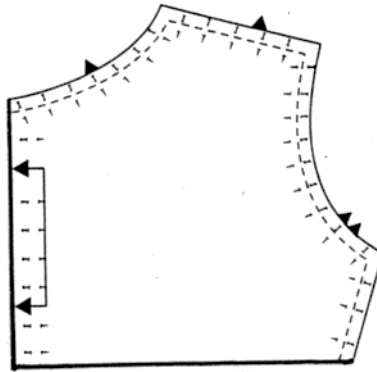
---

**[2]**

**[Question 3 continued on next page]**

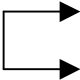
**Question 3 continued**

(c) The diagram below shows the pattern piece.



**Fig. 6**

(i) Name the three pattern piece symbols shown in the chart below.

Symbol	Name
-----	
	
•	

[3]

(ii) Pattern symbols need to be transferred to fabric.

Suggest **two** methods of doing this.

1 \_\_\_\_\_

2 \_\_\_\_\_

[2]

**Total [10]**

**[Turn Over**



4 A party of teenagers is going to France on a day trip. Each teenager will need a bag for their belongings.

(a) Complete the specification below by adding **three** further design requirements for the bag.

- Must be easy to carry and leave hands free
- Must have a detachable purse for small items
- \_\_\_\_\_
- \_\_\_\_\_
- \_\_\_\_\_

[3]

(b) A close weave nylon fabric is to be used to make the bag.  
Give **two** reasons why this is a suitable fabric to use.

---

---

[2]

(c) A prototype of the bag will be made by the manufacturer.  
What is a prototype?

---

---

[2]

(d) Small valuable items are stored in the detachable purse.  
Suggest a suitable method of attaching this purse to the main part of the bag.

---

---

---

[3]

**Total [10]**

5 The glove puppet in Fig. 7 is part of a range of children's toys.

### HEDGEHOG GLOVE PUPPET

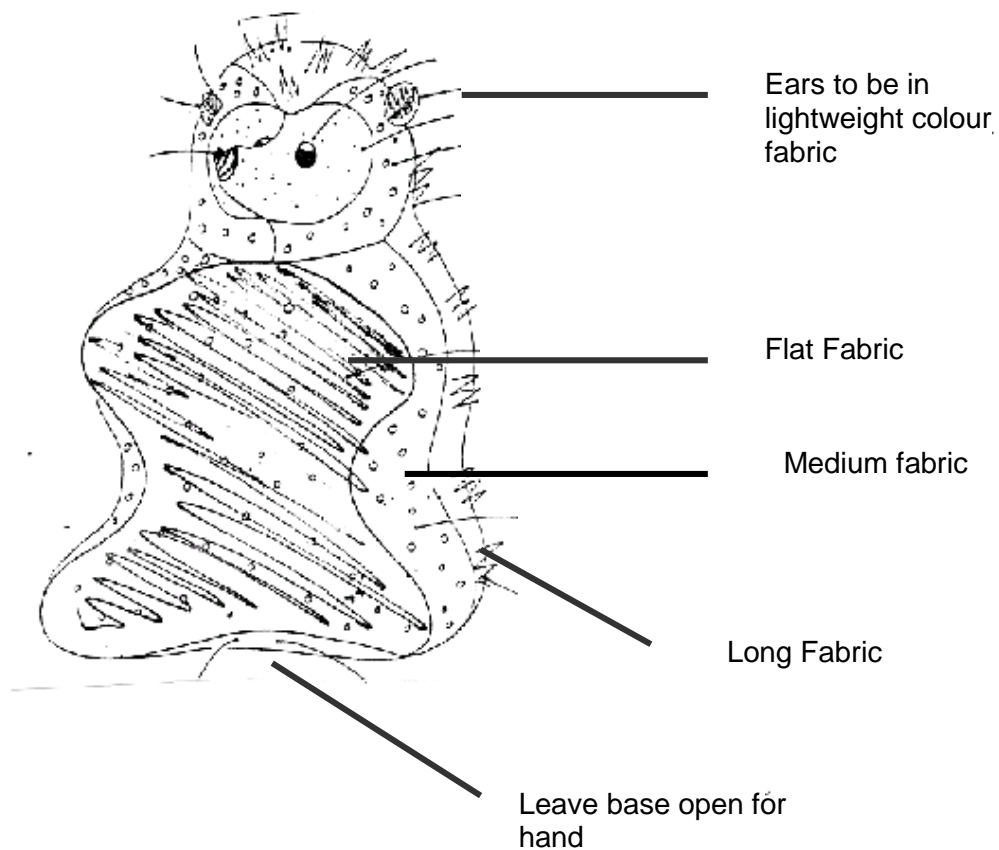


Fig. 7

(a) Give **two** points to include in the specification for the puppet.

---

---

[2]

[Question 5 continued on next page]

**Question 5 - continued**

- (b)** What is the main benefit of cutting out the fabric puppet components using CAM (Computer Aided Manufacture)?

---

---

---

[2]

- (c)** During the manufacture of a batch of puppets, quality is monitored.  
Choose two features on the puppet and for each identify a quality control check.

Feature 1 \_\_\_\_\_

[2]

Feature 2 \_\_\_\_\_

[2]

- (d)** Children can be at risk from poorly designed textile products.  
Suggest **two** ways to ensure the puppet is safe for a child.

---

---

[2]

**Total [10]**

**BLANK PAGE**