

**GENERAL CERTIFICATE OF SECONDARY EDUCATION**

**1958/03**

**D&T: TEXTILES TECHNOLOGY**

Paper 3 (Foundation Tier)

**MONDAY 9 JUNE 2008**

Afternoon  
 Time: 1 hour

Candidates answer on the question paper  
**Additional materials (enclosed):** Insert

**Additional materials (required):**  
 None



Candidate Forename

Candidate Surname

Centre Number

Candidate Number

**INSTRUCTIONS TO CANDIDATES**

- Write your name in capital letters, your Centre Number and Candidate Number in the boxes above.
- Use blue or black ink. Pencil may be used for graphs and diagrams only.
- Read each question carefully and make sure that you know what you have to do before starting your answer.
- Answer **all** the questions.
- Do **not** write in the bar codes.
- Write your answer to each question in the space provided.

**INFORMATION FOR CANDIDATES**

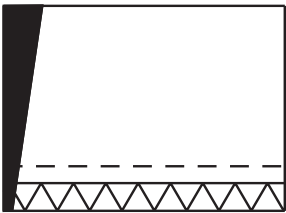
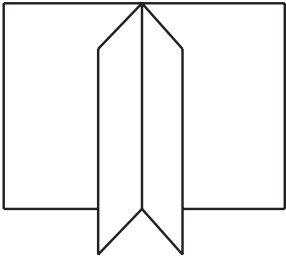
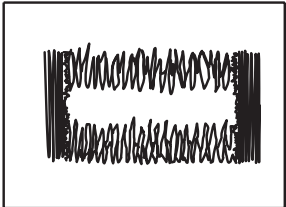
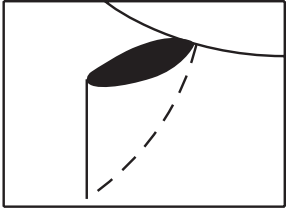
- The number of marks for each question is given in brackets [ ] at the end of each question or part question.
- The total number of marks for this paper is **50**.
- The marks allocated and the spaces provided for your answers are a good indication of the length of answers required.
- Question 5, product analysis, is based on the theme 'Funky Footwear'.

FOR EXAMINER'S USE	
1	
2	
3	
4	
5	
<b>TOTAL</b>	

This document consists of **12** printed pages and an insert.

1 (a) Complete the table below by naming the construction techniques shown.

Give a different product for each technique.

Construction Technique	Name	Product
	<p>Over locking</p>	<p>Bag</p>
	<p>.....</p>	<p>.....</p>
	<p>.....</p>	<p>.....</p>
	<p>.....</p>	<p>.....</p>

[6]

(b) Sewing machines are often used to join fabrics together.

Name **two** decorative techniques which can be carried out using a sewing machine.

Technique 1 .....[1]

Technique 2 .....[1]

(c) List **two** safety rules to follow when using a sewing machine.

Rule 1 .....  
.....[1]

Rule 2 .....  
.....[1]

[Total: 10]

2 Fig. 1 shows a sample of reverse appliqué.



Fig. 1

(a) Name **four** pieces of equipment needed to produce a sample of reverse appliqué.

- 1 ..... [1]
- 2 ..... [1]
- 3 ..... [1]
- 4 ..... [1]

(b) Complete the table below to show how to work reverse appliqué.

	Process	Method
1	Preparing the fabric	<p>.....</p> <p>.....</p> <p>.....</p> <p>.....</p> <p>.....</p> <p>.....</p> <p>.....</p> <p>[2]</p>
2	Working the fabric	<p>.....</p> <p>.....</p> <p>.....</p> <p>.....</p> <p>.....</p> <p>.....</p> <p>.....</p> <p>[2]</p>
3	Finishing	<p>.....</p> <p>.....</p> <p>.....</p> <p>.....</p> <p>.....</p> <p>.....</p> <p>.....</p> <p>[2]</p>

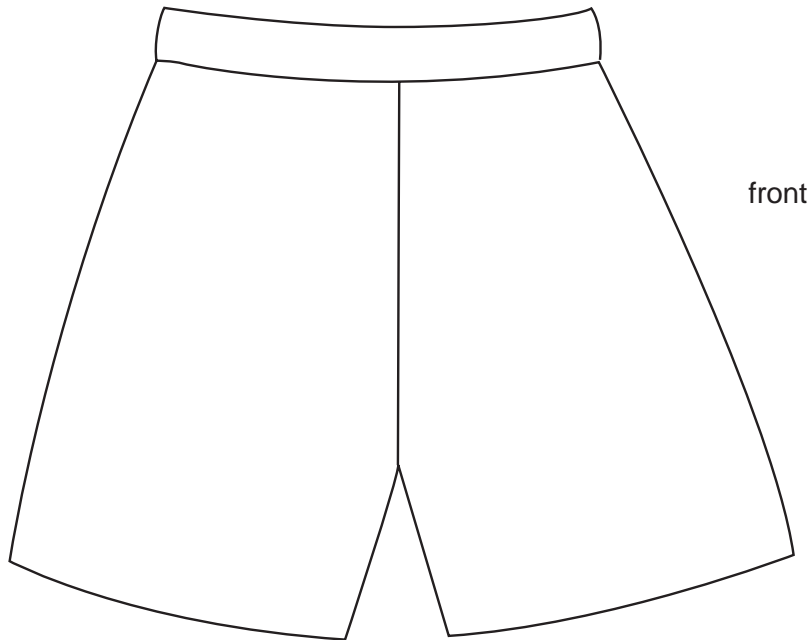
[Total: 10]

[Turn over

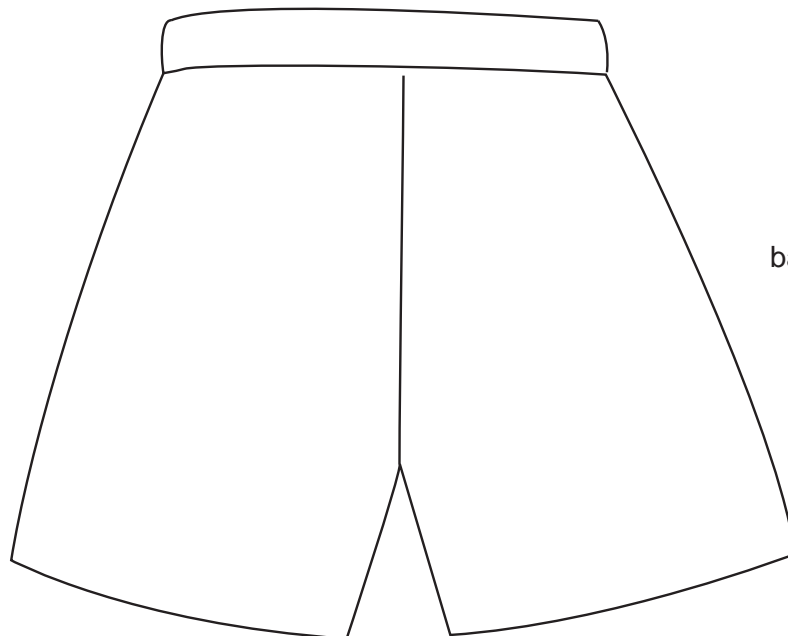
3 (a) A manufacturing company wishes to update their range of shorts.

Modify the design below.

Label all important design details.



front



back

[6]

(b) Choose **four** design modifications you have made to the shorts.

Give a different reason why each modification is important.

Modification 1 .....  
Reason .....  
.....[1]

Modification 2 .....  
Reason .....  
.....[1]

Modification 3 .....  
Reason .....  
.....[1]

Modification 4 .....  
Reason .....  
.....[1]

[Total: 10]

- 4 Fig. 2 shows a woven rug manufactured on an automated loom which is part of an in-line assembly system.

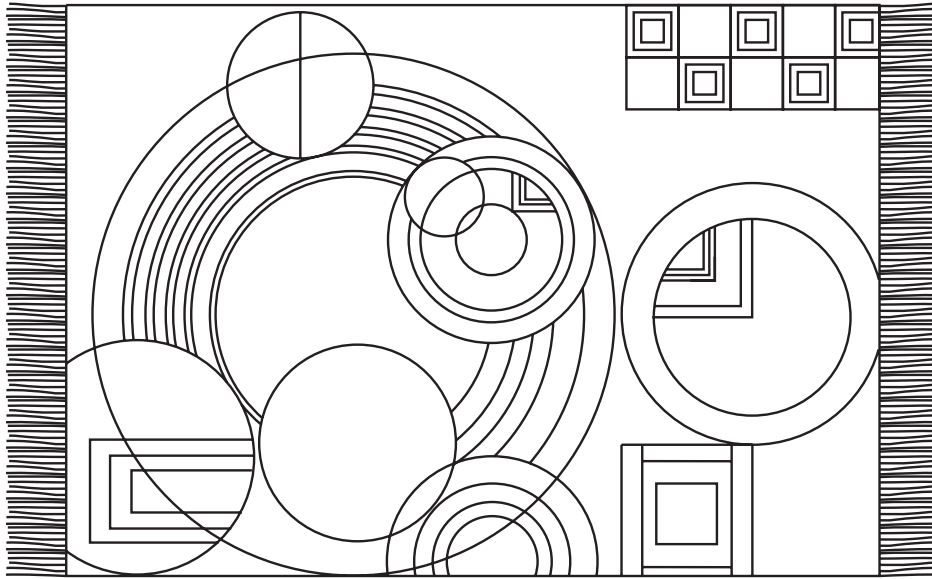


Fig. 2

- (a) (i) Give **three** advantages of an in-line assembly system.

Advantage 1 .....

.....[1]

Advantage 2 .....

.....[1]

Advantage 3 .....

.....[1]

- (ii) State **one** disadvantage of this type of system.

Disadvantage .....

.....[1]



(b) Technical textiles are manufactured for their performance and functional properties rather than their aesthetic characteristics.

Describe the use of **two** technical textiles.

1 .....  
.....  
.....  
.....[2]

2 .....  
.....  
.....  
.....[2]

(c) Textile materials can be made from natural renewable resources.

Name **two** natural renewable resources.

1 .....[1]  
2 .....[1]

[Total: 10]

5 Product Analysis

The colour insert shows a mood board reflecting the theme of 'Funky Footwear'.

(a) Using the mood board identify **three** pre-manufactured components.

1 .....[1]

2 .....[1]

3 .....[1]

(b) The mood board includes a walking shoe also shown in Fig. 3.

The upper part of the shoe is made from Gore-tex fabric.



Fig. 3

Give **two** reasons why Gore-tex is a suitable fabric for the shoe.

Reason 1 .....  
.....[1]

Reason 2 .....  
.....[1]

(c) The upper part of the walking shoe has been constructed using a number of layered sections.

Explain why the walking shoe has been made in this way.

.....

.....

.....

.....[2]

(d) The mood board also includes a 'biker boot'.

The boot design is to be modified.

Using notes and sketches show how the boot design could be developed.



[3]

[Total: 10]

**PLEASE DO NOT WRITE ON THIS PAGE**

---

Permission to reproduce items where third-party owned material protected by copyright is included has been sought and cleared where possible. Every reasonable effort has been made by the publisher (OCR) to trace copyright holders, but if any items requiring clearance have unwittingly been included, the publisher will be pleased to make amends at the earliest possible opportunity.

OCR is part of the Cambridge Assessment Group. Cambridge Assessment is the brand name of University of Cambridge Local Examinations Syndicate (UCLES), which is itself a department of the University of Cambridge.