

GENERAL CERTIFICATE OF SECONDARY EDUCATION

D&T: TEXTILES TECHNOLOGY

D&T: TEXTILES TECHNOLOGY (Short Course)

Paper 2 (Higher Tier)

MONDAY 2 JUNE 2008

1958/02
1058/02

Morning
Time: 1 hour 15 minutes

Candidates answer on the question paper

Additional materials: No additional materials are required



Candidate
Forename

Candidate
Surname

Centre
Number

--	--	--	--	--

Candidate
Number

--	--	--	--

INSTRUCTIONS TO CANDIDATES

- Write your name in capital letters, your Centre Number and Candidate Number in the boxes above.
- Use blue or black ink. Pencil may be used for graphs and diagrams only.
- Read each question carefully and make sure that you know what you have to do before starting your answer.
- Answer **all** the questions.
- Do **not** write in the bar codes.
- Write your answer to each question in the space provided.

INFORMATION FOR CANDIDATES

- The number of marks for each question is given in brackets [] at the end of each question or part question.
- The marks allocated and the spaces provided for your answers are a good indication of the length of answers required.
- The total number of marks for this paper is **50**.

FOR EXAMINER'S USE	
1	
2	
3	
4	
5	
TOTAL	

This document consists of **12** printed pages.

- 1 Many fabrics are decorated with a printed design developed using Computer Aided Design (CAD).



- (a) Give **four** advantages of using CAD to develop print designs for fabrics.

Advantage 1 _____
_____ [1]

Advantage 2 _____
_____ [1]

Advantage 3 _____
_____ [1]

Advantage 4 _____
_____ [1]

- (b) Give **two** Health and Safety rules that should be followed when using a computer.

Rule 1 _____
_____ [1]

Rule 2 _____
_____ [1]

- (c) Roller printing is often used to print large quantities of fabric. Describe the industrial process of roller printing.

[4]

[Total: 10]

2 Fig. 1 shows a knitted woollen hat.

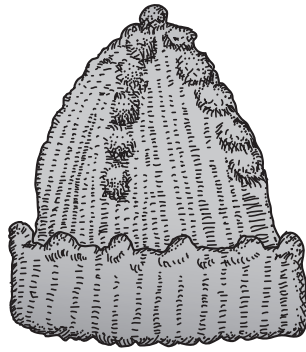


Fig. 1

(a) Give **three** reasons why a knitted woollen fabric is suitable for the hat.

Reason 1 _____
_____ [1]

Reason 2 _____
_____ [1]

Reason 3 _____
_____ [1]

(b) Fig. 2 shows the seam used to make the hat.

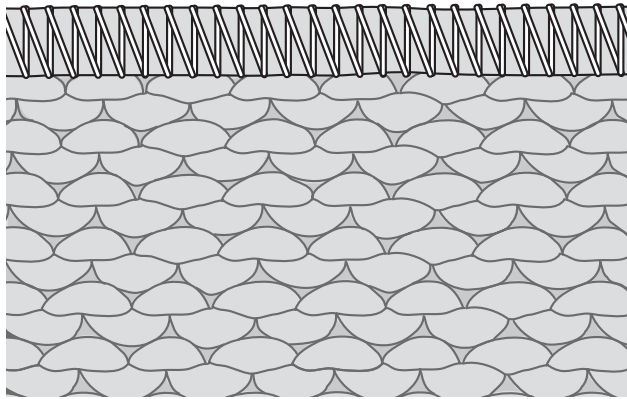


Fig. 2

Explain why this seam is suitable.

_____ [2]

(c) The manufacturer has decided to use a knitted acrylic fabric rather than a knitted wool fabric for the hat.

State **two** advantages of using acrylic fabric for the hat.

Advantage 1 _____
_____ [1]

Advantage 2 _____
_____ [1]

(d) A new hat design is to be developed for pre-school children.

Describe **three** design features that could be included in the new hat design.

Feature 1 _____
_____ [1]

Feature 2 _____
_____ [1]

Feature 3 _____
_____ [1]

[Total: 10]

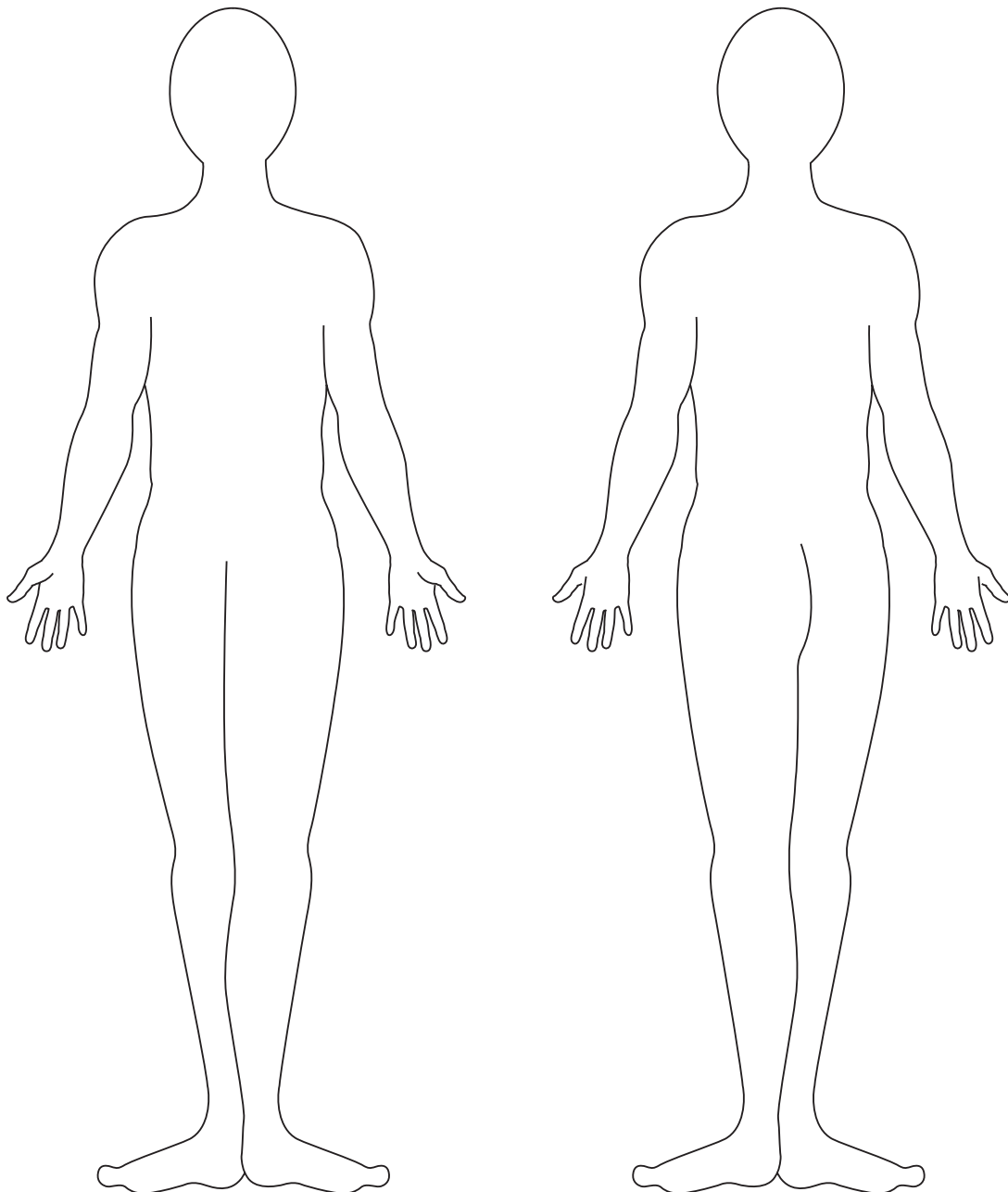
3 A garden centre is opening a café to attract more customers.

(a) On the outline below sketch a design for a uniform suitable for people serving food in the café.

The design must:

- be unisex;
- show corporate identity;
- be economical to manufacture.

Annotate the sketch to show all important design and construction details.



Front view

Back view

[6]

(b) Explain **two** benefits of making a prototype uniform before beginning full scale production.

Benefit 1 _____

_____ [2]

Benefit 2 _____

_____ [2]

[Total: 10]

- 4 Fig. 3 shows an unlined fleece jacket and the pattern pieces used to make it.

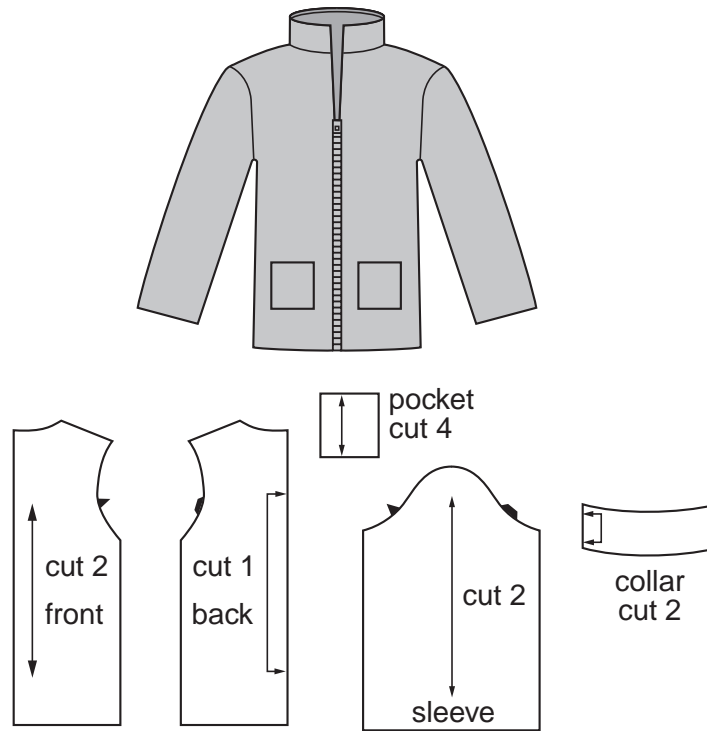


Fig. 3

- (a) In the space below, produce a layplan to show how the pattern pieces would be arranged on the fleece fabric.

Annotate your layplan.

- (b)** The fleece jacket fastens using an open ended zip.
Explain, using notes and diagrams, how to insert the zip into the front of the fleece jacket.

[6]

[Total: 10]

(b) Explain how technological developments have influenced the labelling used in textile products.

[4]

[Total: 10]

PLEASE DO NOT WRITE ON THIS PAGE

Copyright Acknowledgements:

Permission to reproduce items where third-party owned material protected by copyright is included has been sought and cleared where possible. Every reasonable effort has been made by the publisher (OCR) to trace copyright holders, but if any items requiring clearance have unwittingly been included, the publisher will be pleased to make amends at the earliest possible opportunity.

OCR is part of the Cambridge Assessment Group. Cambridge Assessment is the brand name of University of Cambridge Local Examinations Syndicate (UCLES), which is itself a department of the University of Cambridge.