

INSTRUCTIONS TO CANDIDATES

- Write your name in capital letters, your Centre Number and Candidate Number in the boxes above and on each of the A3 answer sheets inside this folder.
- Use blue or black ink. Pencil may be used for graphs and diagrams only.
- Read each question carefully and make sure that you know what you have to do before starting your answer.
- Answer **all** questions.
- Write your answer to each question in the space provided.
- All diagrams should be drawn accurately unless otherwise stated. Drawing aids may be used. Colour or shading should only be used if asked for in the question. Use your discretion where dimensions are not given.


INFORMATION FOR CANDIDATES

- The number of marks for each question is given in brackets [] at the end of each question or part question.
- The total number of marks for this Section is **50**.
- Dimensions are in mm unless stated otherwise.
- Marks will be awarded for the use of correct drawing conventions.

5	TOTAL
4	
3	
2	
1	

FOR EXAMINER'S USE

Centre Number	Candidate Number
<input style="width: 100%;" type="text"/>	<input style="width: 100%;" type="text"/>
Candidate Forename	Candidate Surname
<input style="width: 100%;" type="text"/>	<input style="width: 100%;" type="text"/>



GENERAL CERTIFICATE OF SECONDARY EDUCATION
DESIGN AND TECHNOLOGY

Graphic Products (Full Course)
Graphic Products (Short Course)

Paper 1 (Foundation Tier)

THURSDAY 22 MAY 2008

Morning


Time: 1 hour 15 minutes

1955/01
1055/01

Additional materials (required):
Candidates answer on the question paper
None

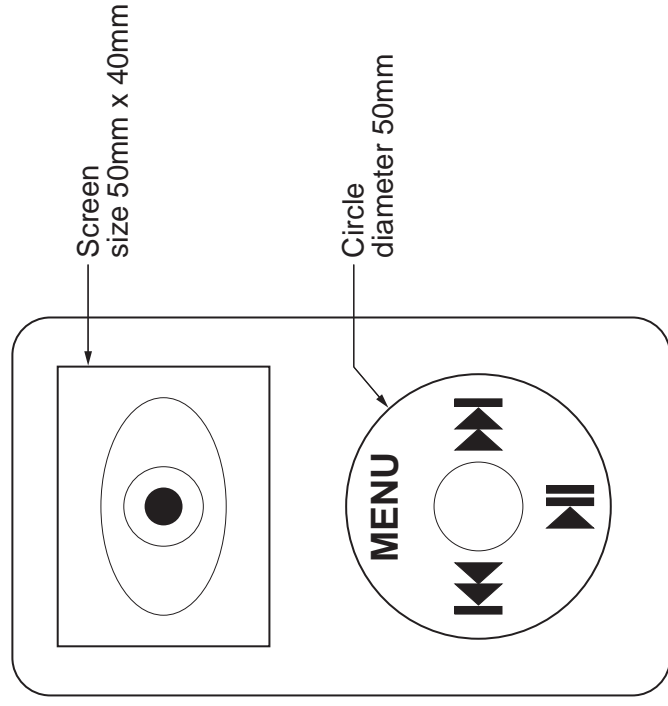
Additional materials (enclosed):
None

Drawing aids may be used



* C U P / T 4 3 2 7 8 *

1 The drawing below shows the front view of the new **EYE MP3 player** which can be won in a competition.



Front view of MP3 Player

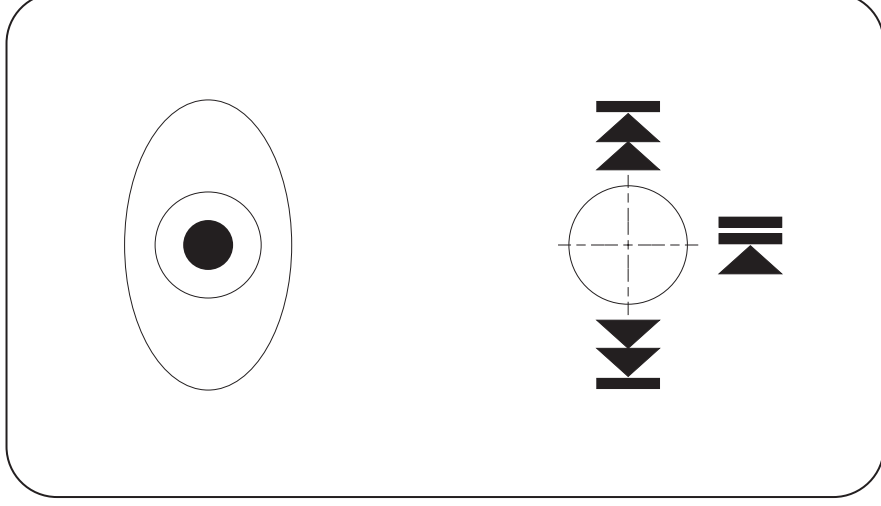
not to scale

(a) On the competition entry form shown on the right complete the front view of the MP3 player by:

- (i) using instruments to add the outline shape of the screen and the 50 mm diameter circle; [4]
- (ii) carefully printing the word **MENU** in 5 mm capital letters. [2]

perforated →

**Your chance to win
one of the new
EYE MP3 players**



Name _____

Address _____

Post Code _____

Telephone number _____

Full size drawing of the A5 competition Entry Form.

(b) Tick (✓) the type of alignment that has been used for the text at the bottom of the entry form. [1]

Right	Bold	Left	Centre
<input type="checkbox"/>	<input type="checkbox"/>	<input type="checkbox"/>	<input type="checkbox"/>

(c) State why the entry form has been perforated. [1]

(d) State the number of A5 entry forms that could be printed on one A3 sheet of paper. [1]

(e) Tick (✓) the most appropriate printing method for producing 20,000 colour copies of the entry form. [1]

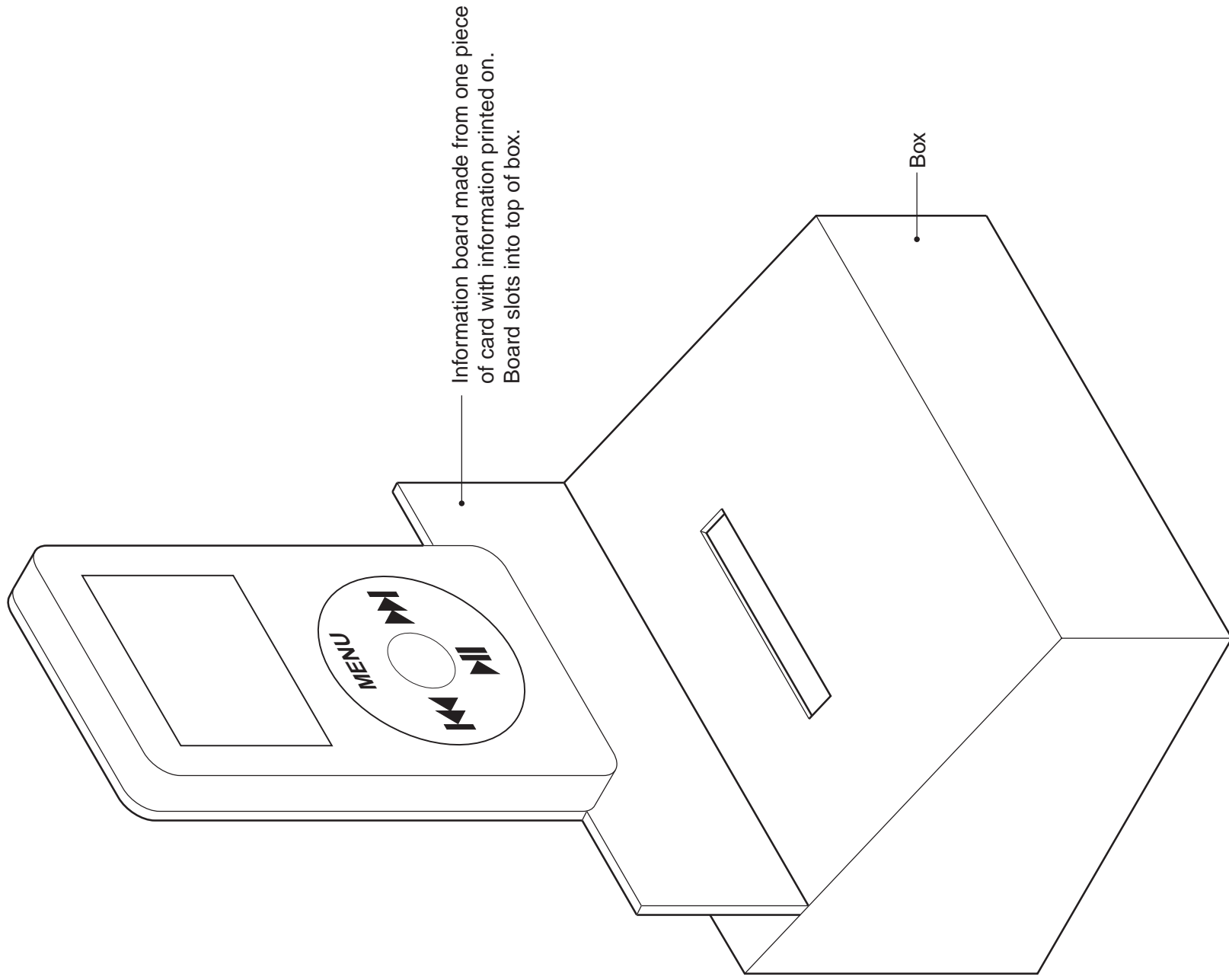
Inkjet printer	Photocopier	Offset lithography	Screen printing
<input type="checkbox"/>	<input type="checkbox"/>	<input type="checkbox"/>	<input type="checkbox"/>

2 A pictorial (3D) view of an assembled collection box for competition entry forms is shown. The design consists of a box to hold the completed forms and an information board that slots into the top of the box. [2]

(a) Add pencil shading to the drawing of the MP3 player to:

(i) enhance its **3D** appearance; [3]

(ii) show that the screen is made from **clear plastic**. [2]



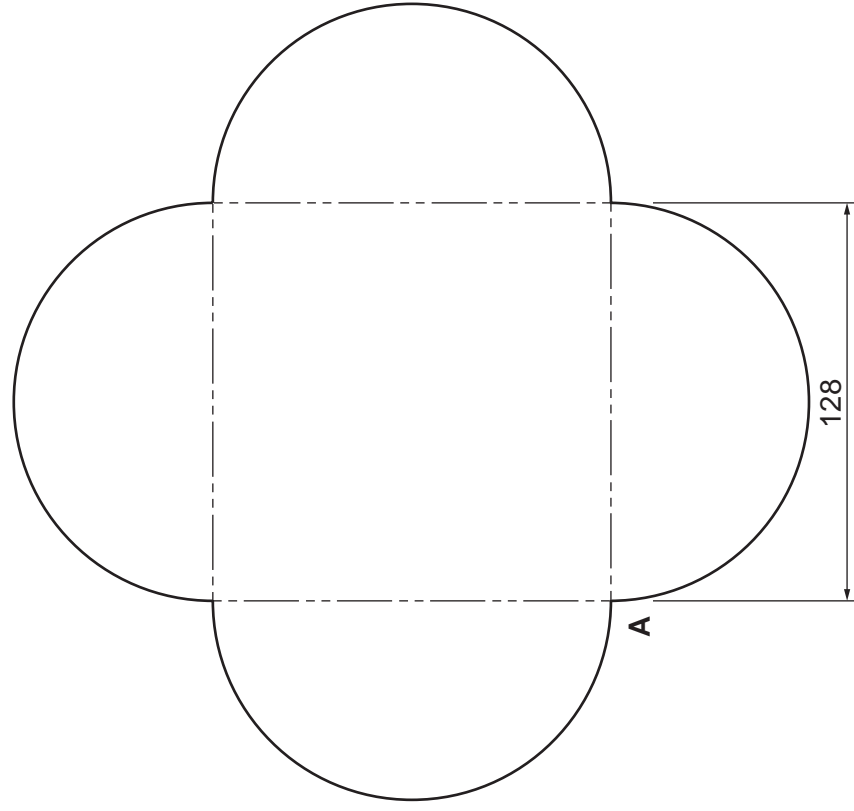
(b) Both the box and the information board are made from 2 mm thick card. Use a sketch and notes to show how the information board could slot into the box. [2]

(c) Name an industrial process that could be used to cut out 1,000 information boards. [1]

(d) State **two** advantages of being able to remove the information board from the box.
 Advantage 1 [1]
 Advantage 2 [1]

3 Information explaining how to download music onto an MP3 player will be available on a CD ROM.

The drawing below shows the development (net) of the card packaging for the CD ROM.



not to scale

(a) Name the **two** different shapes used in the drawing of the development (net).

Shape 1 _____ [1]

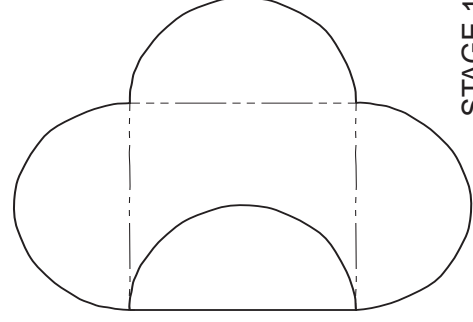
Shape 2 _____ [1]

(b) Use instruments to draw to a **scale of 1:2** the development (net) of the packaging. Corner A has been positioned for you. [4]

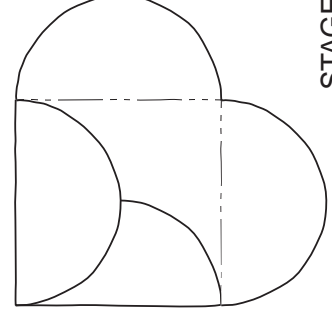


(c) This design for the packaging was chosen because when the flaps are folded over in the correct order they lock together and no additional fixing method is required.

Complete the sequence of sketches below to show how the flaps should be folded so that they lock together to securely close the packaging. [4]



STAGE 1

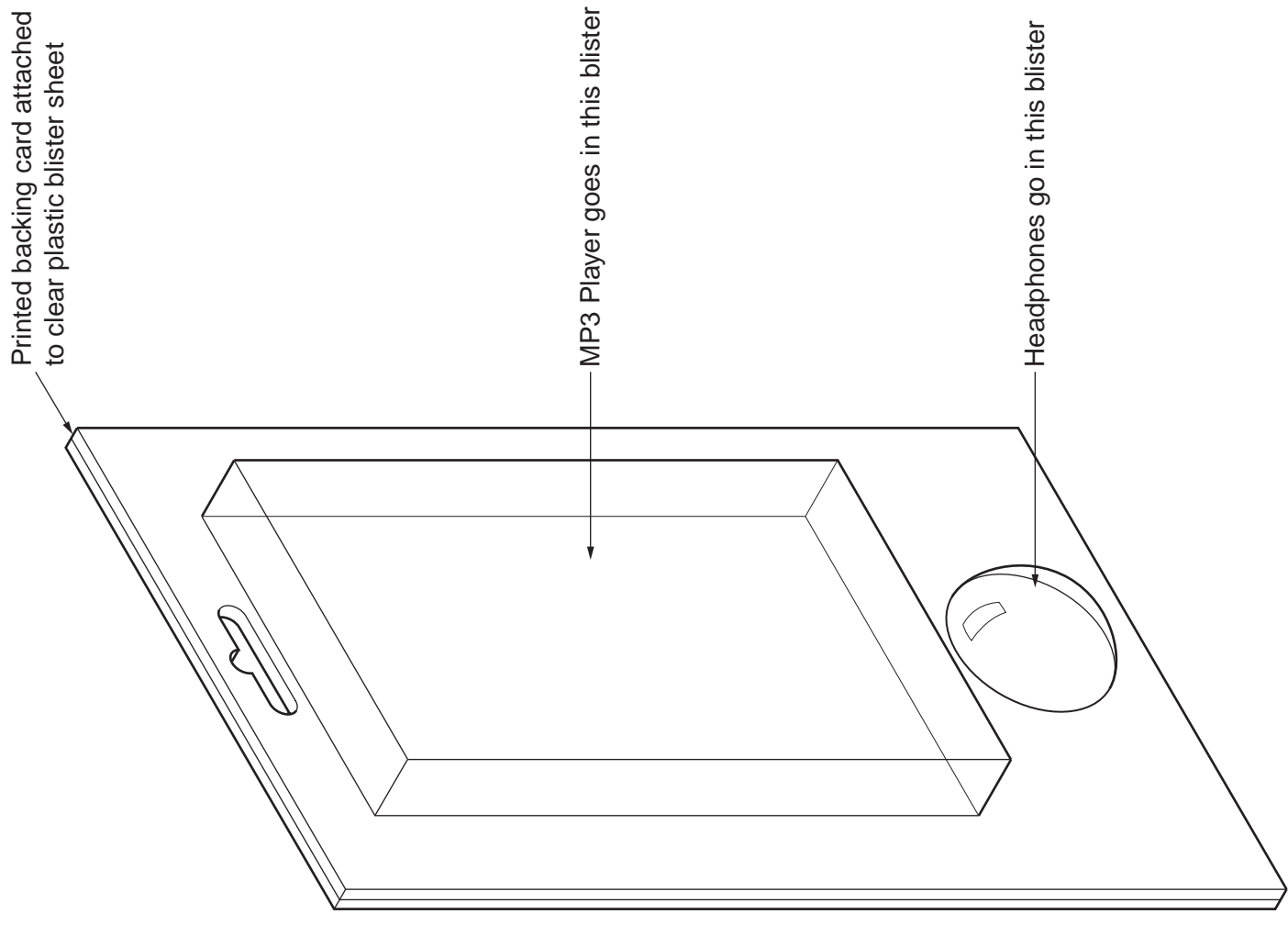


STAGE 2

STAGE 3

STAGE 4

4 A pictorial (3D) drawing of an incomplete design for a blister pack to hold the **EYE MP3 player** and a pair of headphones is shown below.



(a) Give **one** advantage of this type of packaging over card boxes.

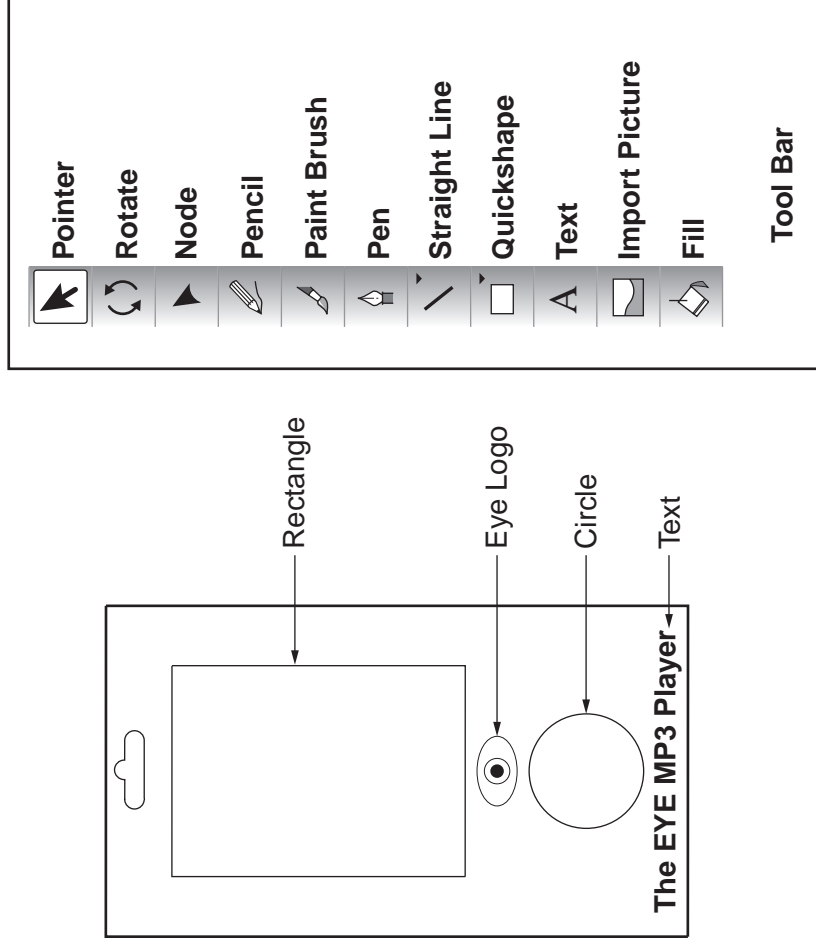
Advantage _____ [1]

(b) Name the process used to produce the clear blister sheet from a thermoplastic.

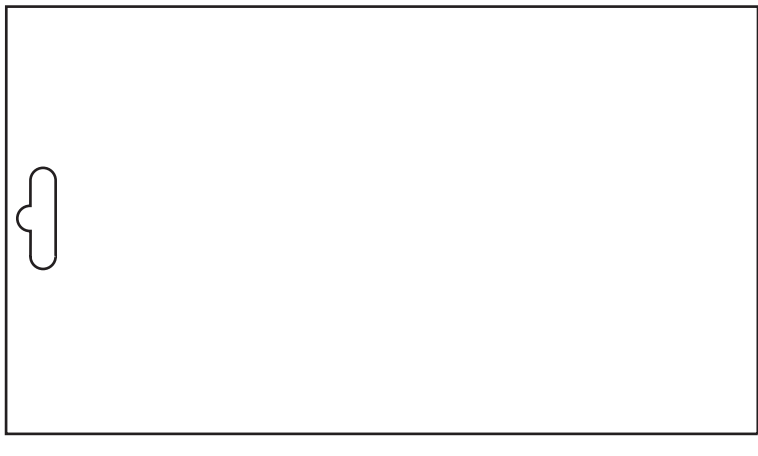
_____ [1]

(c) The drawing shows an initial idea for the backing card.

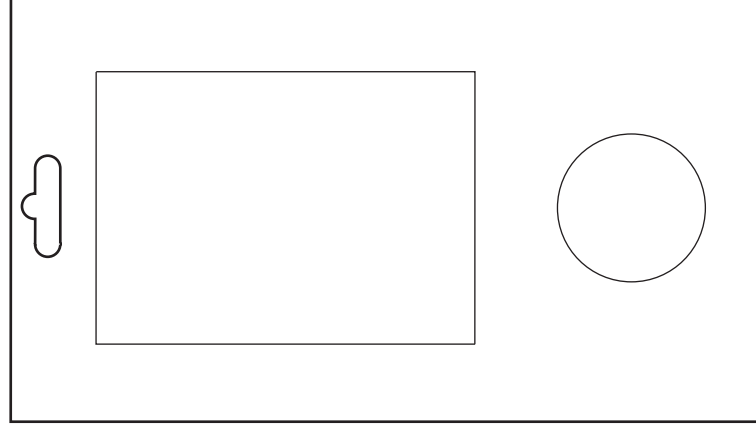
The final design will be produced on a computer using tools from the tool bar shown below.



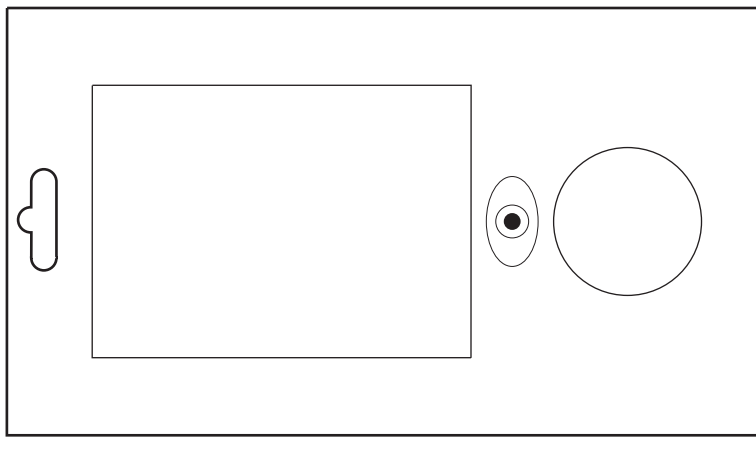
(i) Add sketches and notes to the given drawing to explain how the **rectangle** and **circle** would be drawn using tools from the tool bar. [4]



(ii) Add sketches and notes to the given drawing to explain how the 'EYE' logo would be moved to its correct position using tools from the tool bar. [2]

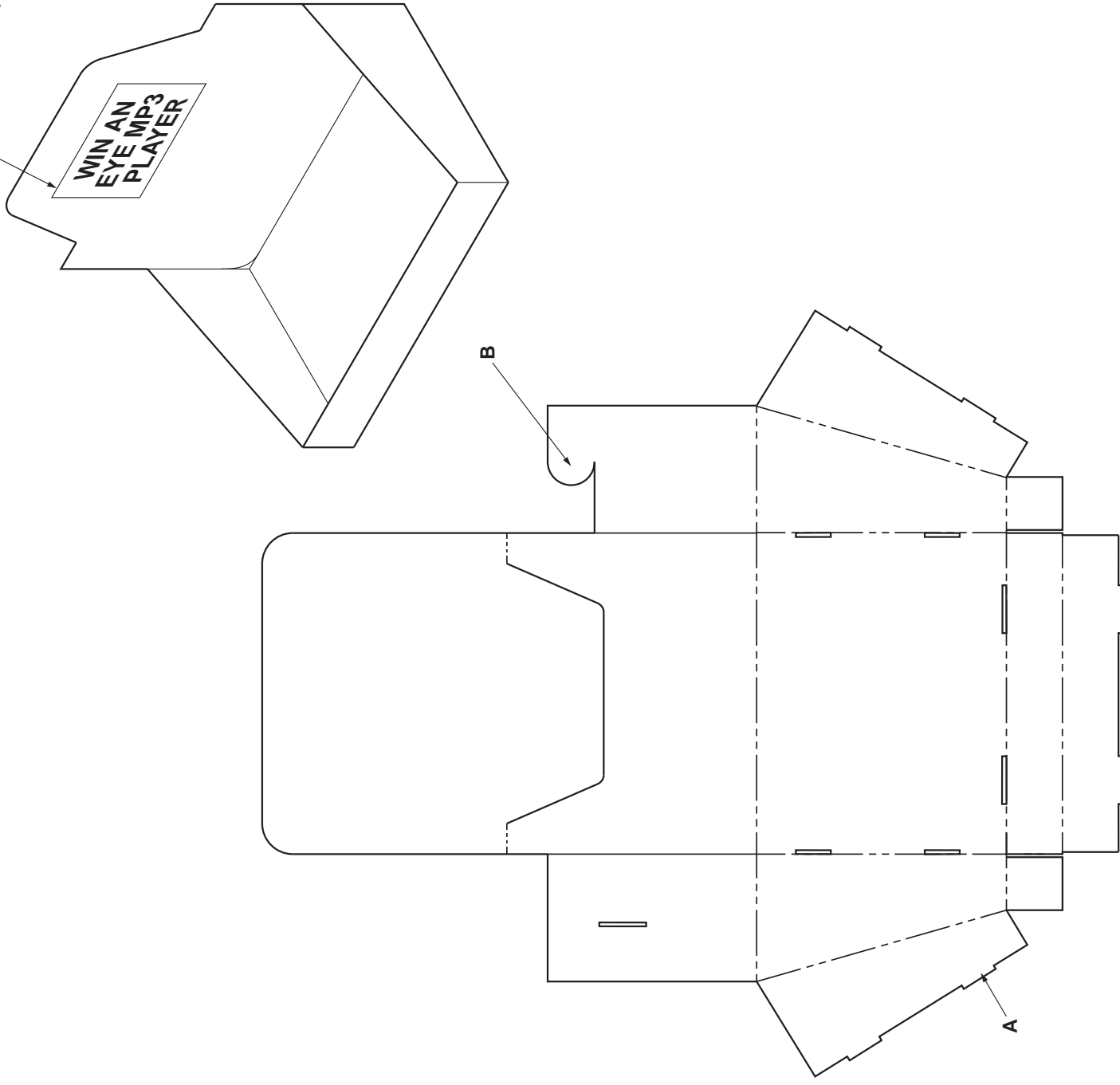


(iii) Add sketches and notes to the given drawing to explain how the **text** would be added using tools from the tool bar. [2]



5 Details are given below about a card tray used to hold competition entry forms to win an EYE MP3 player. [2]

Printed label
stuck onto tray



(b) Use a sketch and notes to explain the design feature shown at **A**. [2]

(c) Use a sketch and notes to explain the design feature shown at **B**. [2]

(d) Give **two** reasons why it is better to print information onto labels rather than straight onto the trays. Reason 1 _____ [1]
Reason 2 _____ [1]

(e) Use a sketch and notes to show a modification to the tray which would make it easier to remove the entry forms. [2]

(a) Give **two** reasons why this type of product is designed so that it can be assembled without the use of glue. Reason 1 _____ [1]
Reason 2 _____ [1]

Permission to reproduce items where third-party owned material protected by copyright is included has been sought and cleared where possible. Every reasonable effort has been made by the publisher (OCR) to trace copyright holders, but if any items requiring clearance have unwittingly been included, the publisher will be pleased to make amends at the earliest possible opportunity.

OCR is part of the Cambridge Assessment Group. Cambridge Assessment is the brand name of University of Cambridge Local Examinations Syndicate (UCLES), which is itself a department of the University of Cambridge.

© OCR 2008
