

Candidate Name	Centre Number	Candidate Number



**OXFORD CAMBRIDGE AND RSA EXAMINATIONS**  
**General Certificate of Secondary Education**

**D&T: TEXTILES TECHNOLOGY**  
**PAPER 3 (FOUNDATION TIER)**

**1958/3**

Thursday                      **16 JUNE 2005**                      Afternoon                      1 hour

Candidates answer on the question paper.  
 No additional materials are required.

**TIME**    1 hour

**INSTRUCTIONS TO CANDIDATES**

Write your name, Centre number and candidate number in the spaces at the top of this page.

Answer **all** questions.

Write your answers in the spaces provided on the question paper.

**INFORMATION FOR CANDIDATES**

The number of marks is given in brackets [ ] at the end of each question or part question.

The marks allocated and the spaces provided for your answers are a good indication of the length of answers required.

The total number of marks for this paper is **50**.

Question 5, product analysis, is based on the theme 'Cultural Influences in Textiles'.

<b>FOR EXAMINER'S USE</b>	
<b>Q1</b>	
<b>Q2</b>	
<b>Q3</b>	
<b>Q4</b>	
<b>Q5</b>	
<b>TOTAL</b>	

---

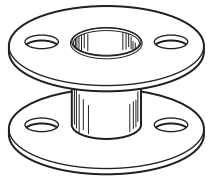
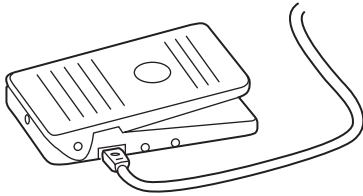
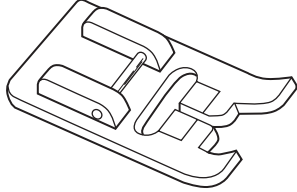
**This question paper consists of 11 printed pages and 1 blank page.**

1 Fig. 1 shows a sewing machine.



Fig. 1

- (a) Label four parts of the sewing machine above. [4]
- (b) Complete the chart below by naming the three removable parts of a sewing machine.

Removable Part	Name
	<hr style="width: 80%; margin: 0 auto;"/>
	<hr style="width: 80%; margin: 0 auto;"/>
	<hr style="width: 80%; margin: 0 auto;"/>

[3]

(c) Give **three** checks that should be carried out before using a sewing machine.

Check 1 \_\_\_\_\_  
\_\_\_\_\_ [1]

Check 2 \_\_\_\_\_  
\_\_\_\_\_ [1]

Check 3 \_\_\_\_\_  
\_\_\_\_\_ [1]

[Total : 10]

2 Fig. 2 shows a printed T-shirt.

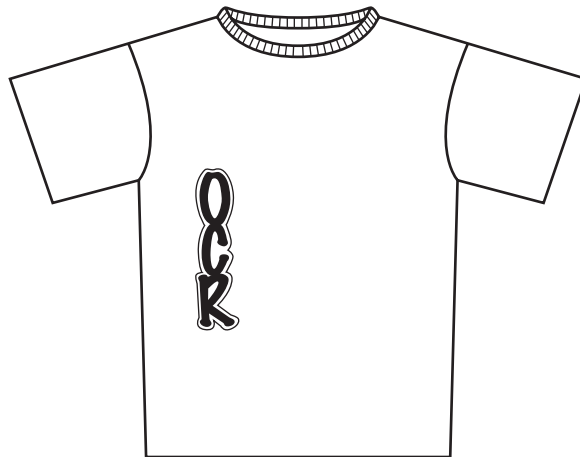
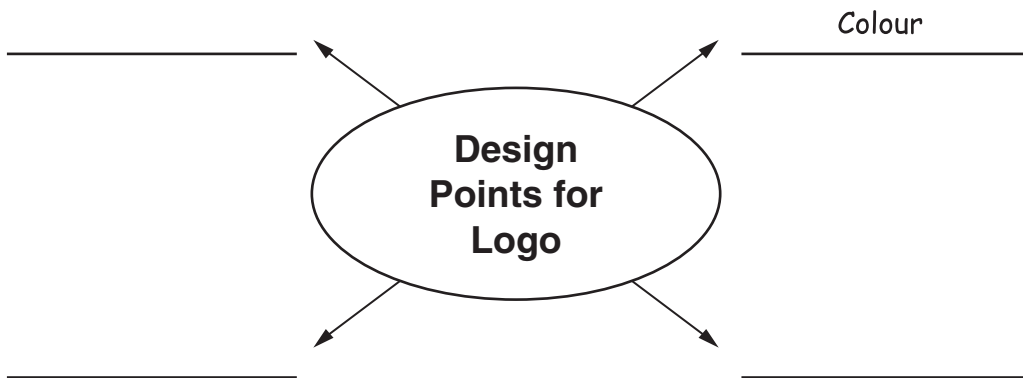


Fig. 2

- (a) Logos on T-shirts are popular.  
Complete the diagram below by identifying **three** other design points that should be considered when designing a logo for a T-shirt.



[3]

- (b) Name **two** different printing methods that could be used to apply a logo onto the T-shirt.

Method 1 \_\_\_\_\_ [1]

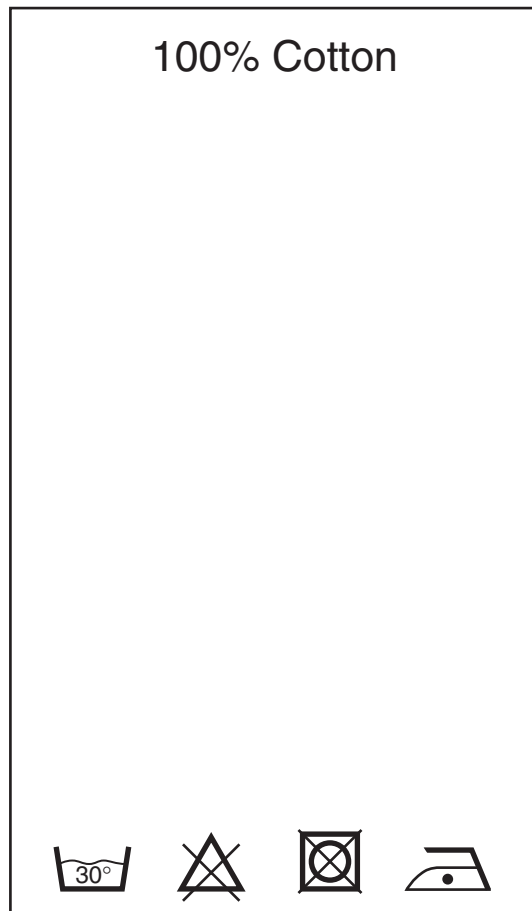
Method 2 \_\_\_\_\_ [1]

- (c) The T-shirt is made from 100% cotton fabric.  
Give **two** reasons why 100% cotton is a suitable fabric for the T-shirt.

1 \_\_\_\_\_ [1]

2 \_\_\_\_\_ [1]

- (d) Complete the label below by adding **three** more pieces of information that could be found on a permanent label attached to the T-shirt.



[3]

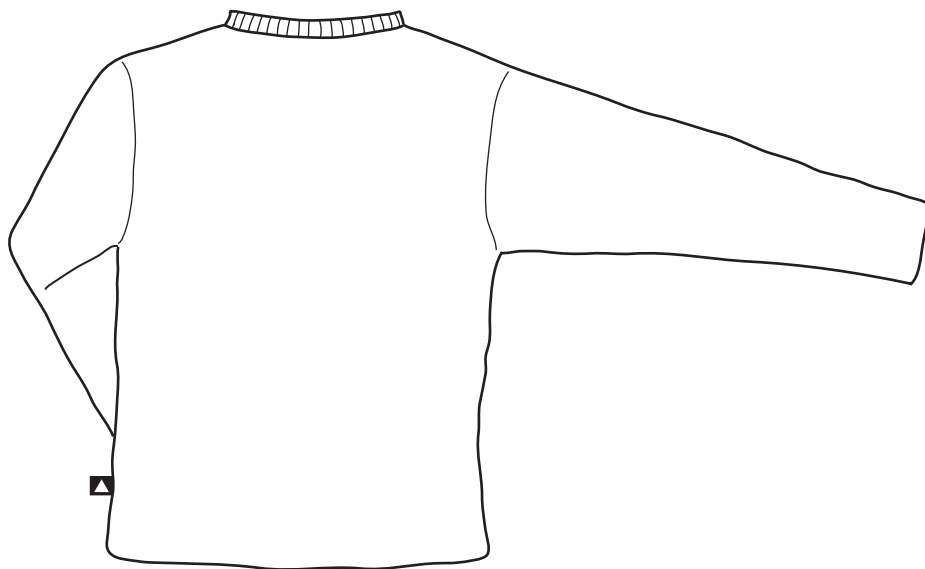
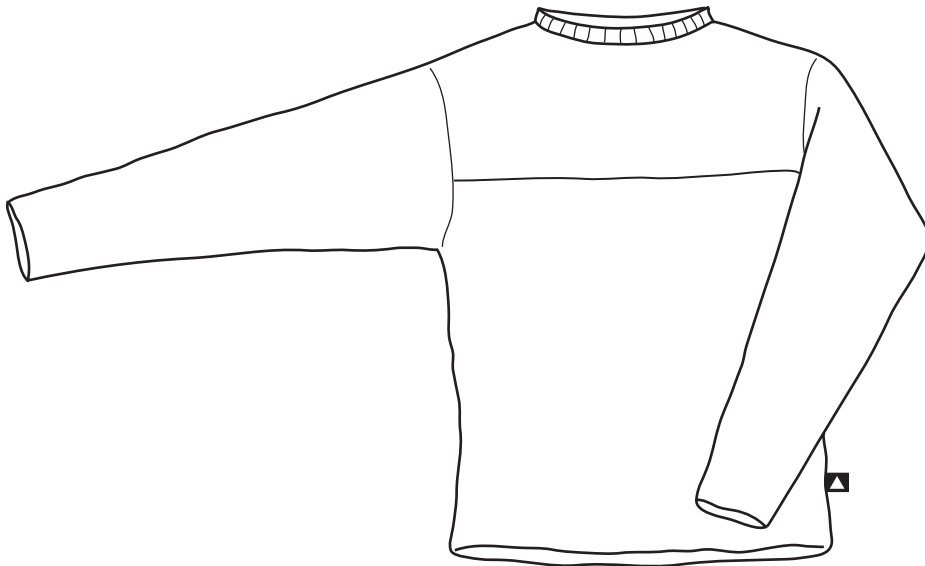
[Total : 10]

3 A sports company wishes to update its unisex fleece top.

(a) Modify the design below to take account of the following specification points:

- suitable for winter wear;
- storage of personal items;
- fastenings.

Label all important design details.



[6]

- (b) (i) Give **two** ways in which smart materials could be used in the fleece top to make it more appealing to teenagers.

1 \_\_\_\_\_  
\_\_\_\_\_ [1]

2 \_\_\_\_\_  
\_\_\_\_\_ [1]

- (ii) State **one** advantage of using smart materials.

\_\_\_\_\_  
\_\_\_\_\_ [1]

- (iii) State **one** disadvantage of using smart materials.

\_\_\_\_\_  
\_\_\_\_\_ [1]

[Total : 10]

- 4 Fig 3 shows a power kite.



Fig. 3

- (a) The kite is made from ripstop nylon.  
Identify two performance characteristics that make ripstop nylon a suitable fabric for the kite.

1 \_\_\_\_\_  
\_\_\_\_\_ [1]

2 \_\_\_\_\_  
\_\_\_\_\_ [1]



**(b)** A prototype of the kite has been made.  
Explain the benefits of testing a prototype before manufacturing in quantity.

---

---

---

---

---

---

---

---

---

---

[4]

**(c)** The kite is to be manufactured using flow line production. (Repetitive flow)  
Describe **two** key points of this production system which make it suitable for manufacturing the kite in quantity.

1 \_\_\_\_\_

\_\_\_\_\_ [1]

2 \_\_\_\_\_

\_\_\_\_\_ [1]

**(d)** Consumers are becoming increasingly conscious of environmental issues.  
Give **two** ways in which consumers can ensure they are buying environmentally friendly products.

1 \_\_\_\_\_

\_\_\_\_\_ [1]

2 \_\_\_\_\_

\_\_\_\_\_ [1]

[Total : 10]

## 5 Product Analysis

Fig. 4 shows a shisha embroidered shantung silk cushion.



Fig 4

- (a) Shisha embroidery uses mirrors.  
Name two alternative pre-manufactured standard components that could be used to decorate the cushion.

1 \_\_\_\_\_  
\_\_\_\_\_ [1]

2 \_\_\_\_\_  
\_\_\_\_\_ [1]

- (b) (i) Explain one advantage of using the shisha embroidery technique to decorate the cushion.

\_\_\_\_\_  
\_\_\_\_\_ [1]

- (ii) Explain one disadvantage of using this technique

\_\_\_\_\_  
\_\_\_\_\_ [1]

- (c) The cushion design is to be reproduced using the molar technique.  
Identify **two** key differences between the **two** techniques

1 \_\_\_\_\_  
\_\_\_\_\_ [1]

2 \_\_\_\_\_  
\_\_\_\_\_ [1]

- (d) Shantung is a fabric made from silk fibres.  
An alternative would be to use a woven fabric made from viscose fibres.  
Give **two** reasons why a viscose fabric would be a suitable alternative.

1 \_\_\_\_\_  
\_\_\_\_\_ [1]

2 \_\_\_\_\_  
\_\_\_\_\_ [1]

- (e) Suggest **two** appropriate chemical finishes that could be applied to the viscose fabric cushion cover.

1 \_\_\_\_\_  
2 \_\_\_\_\_ [2]

[Total : 10]

---

Permission to reproduce items where third-party owned material protected by copyright is included has been sought and cleared where possible. Every reasonable effort has been made by the publisher (OCR) to trace copyright holders, but if any items requiring clearance have unwittingly been included, the publisher will be pleased to make amends at the earliest possible opportunity.

OCR is part of the Cambridge Assessment Group. Cambridge Assessment is the brand name of University of Cambridge Local Examinations Syndicate (UCLES), which is itself a department of the University of Cambridge.