

**OXFORD CAMBRIDGE AND RSA EXAMINATIONS**  
**General Certificate of Secondary Education**

**D&T: TEXTILES TECHNOLOGY**  
**PAPER 3 (FOUNDATION TIER)**



**1958/3**

Wednesday                      **14 JUNE 2006**                      Afternoon                      1 hour

Candidates answer on the question paper.  
 No additional materials are required.

Candidate Name

Centre Number 

--	--	--	--	--

Candidate Number 

--	--	--	--

**TIME**    1 hour

**INSTRUCTIONS TO CANDIDATES**

- Write your name in the space above.
- Write your Centre number and Candidate number in the boxes above.
- Answer **all** questions.
- Write your answers in the spaces provided on the question paper.
- Do not write in the bar code. Do not write in the grey area between the pages.
- **DO NOT WRITE IN THE AREA OUTSIDE THE BOX BORDERING EACH PAGE. ANY WRITING IN THIS AREA WILL NOT BE MARKED.**





**INFORMATION FOR CANDIDATES**

- The number of marks is given in brackets [ ] at the end of each question or part question.
- The marks allocated and the spaces provided for your answers are a good indication of the length of answers required.
- The total number of marks for this paper is **50**.
- Question 5, product analysis, is based on the theme 'Prom Fever'.

FOR EXAMINER'S USE	
<b>Q1</b>	
<b>Q2</b>	
<b>Q3</b>	
<b>Q4</b>	
<b>Q5</b>	
<b>TOTAL</b>	

**This question paper consists of 11 printed pages, 1 blank page and an insert.**

- 1 (a) Complete the table below.  
 State the meaning of each symbol.  
 Give one different product each symbol would be found on.

Care Symbol	Meaning	Product
	Dry clean only	Evening dress
	_____	_____
	_____	_____
	_____	_____

[6]

- (b) (i) Name the piece of equipment shown in Fig. 1.

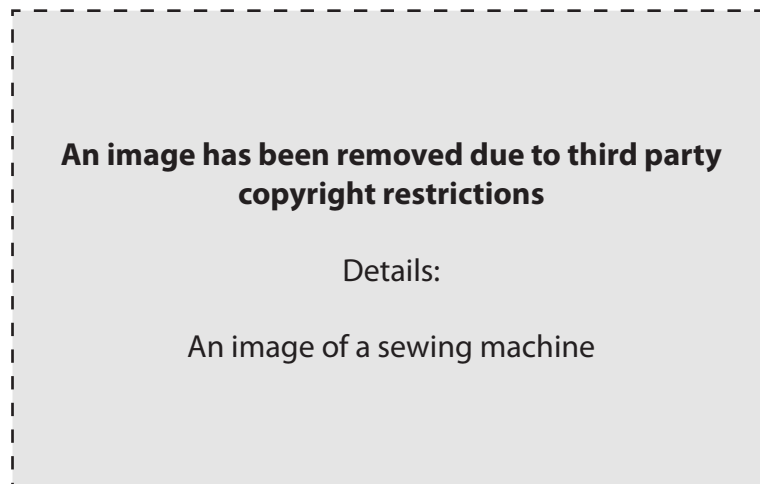


Fig. 1

\_\_\_\_\_ [1]

- (ii) State one reason for using this piece of equipment.

\_\_\_\_\_

\_\_\_\_\_ [1]

- (c) (i) Name the piece of equipment shown below in Fig. 2



Fig. 2

\_\_\_\_\_ [1]

- (ii) Name one textile product that could be made using this piece of equipment.

\_\_\_\_\_ [1]

[Total: 10]

2 Fig. 3 shows a bag.



Fig. 3

(a) Name three pieces of equipment that could be used when making the bag shown in Fig. 3.

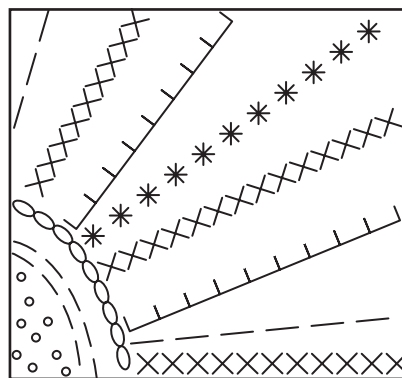
1 \_\_\_\_\_ [1]

2 \_\_\_\_\_ [1]

3 \_\_\_\_\_ [1]

(b) The bag is to be decorated using hand embroidery.

The diagram below shows a design that has been produced using hand embroidery. Name three of the stitches shown.



1 \_\_\_\_\_ [1]

2 \_\_\_\_\_ [1]

3 \_\_\_\_\_ [1]

- (c) Fig. 4 shows the structure of the fabric used to make the bag. Identify the method of fabric construction shown below.

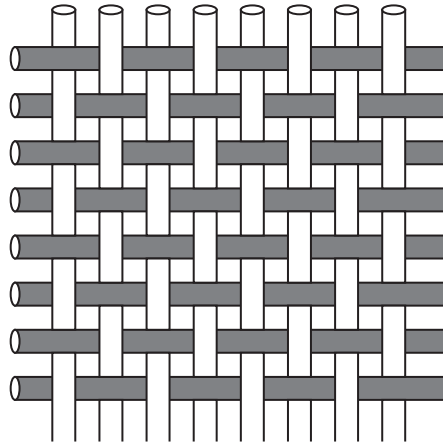


Fig. 4

\_\_\_\_\_ [1]

- (d) Name **one** fabric produced by the construction method shown in Fig. 4.

\_\_\_\_\_ [1]

- (e) Give **two** reasons why this method of fabric construction is suitable for the bag.

1 \_\_\_\_\_ [1]

2 \_\_\_\_\_ [1]

[Total: 10]

- 3 (a) An Environmental Centre wishes to commission a wall hanging for its reception area.

In the space below draw a design for the wall hanging.

The design should address the specification points below:

- decorative design theme – plant forms;
- fabrics and components;
- details of techniques to be used.

Label all important design details.

(b) Environmental issues are very important to the Centre.  
Describe **two** ways the wall hanging could be manufactured in an environmentally friendly way.

1 \_\_\_\_\_  
\_\_\_\_\_  
\_\_\_\_\_  
\_\_\_\_\_ [2]

2 \_\_\_\_\_  
\_\_\_\_\_  
\_\_\_\_\_  
\_\_\_\_\_ [2]

[Total: 10]

4 Computers are used in a variety of ways in the Fashion and Textiles Industry.



(a) Describe three ways computers can be used when designing fashion and textile products. (CAD)

1 \_\_\_\_\_  
\_\_\_\_\_ [1]

2 \_\_\_\_\_  
\_\_\_\_\_ [1]

3 \_\_\_\_\_  
\_\_\_\_\_ [1]

(b) Describe three ways computers can be used when manufacturing fashion and textile products. (CAM)

1 \_\_\_\_\_  
\_\_\_\_\_ [1]

2 \_\_\_\_\_  
\_\_\_\_\_ [1]

3 \_\_\_\_\_  
\_\_\_\_\_ [1]



(c) Fig. 5 shows a fitted fleece top.



Fig. 5

The fitted fleece top in Fig. 5 is produced using a continual flow process. Explain what is meant by a continual flow process.

---

---

---

---

[2]

(d) Microfibres have been used to improve the performance characteristics of the fleece top. Identify a performance characteristic and describe how this would benefit the consumer.

---

---

---

---

[2]

[Total: 10]

5 Product Analysis

The colour insert sheet shows a mood board reflecting the theme of 'Prom Fever'.

- (a) Using the mood board.  
Identify two pre-manufactured components.

1 \_\_\_\_\_ [1]

2 \_\_\_\_\_ [1]

- (b) Fig. 6 shows a formal shirt.

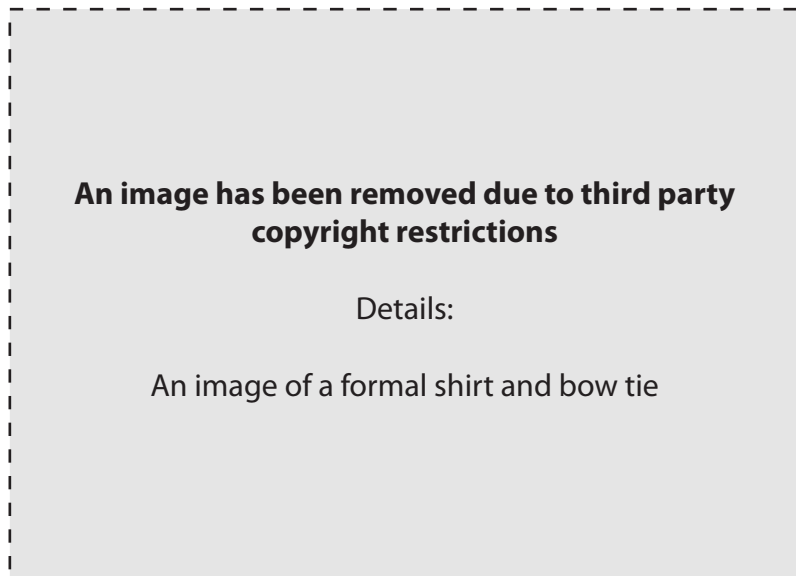


Fig. 6

- (i) Name one decorative technique used on the shirt.

\_\_\_\_\_ [1]

- (ii) The shirt is to be made using a double stitched seam.  
Explain why this is a suitable seam to use.

\_\_\_\_\_  
\_\_\_\_\_  
\_\_\_\_\_  
\_\_\_\_\_  
\_\_\_\_\_ [3]

(c) Fig. 7 shows a design for a bodice.

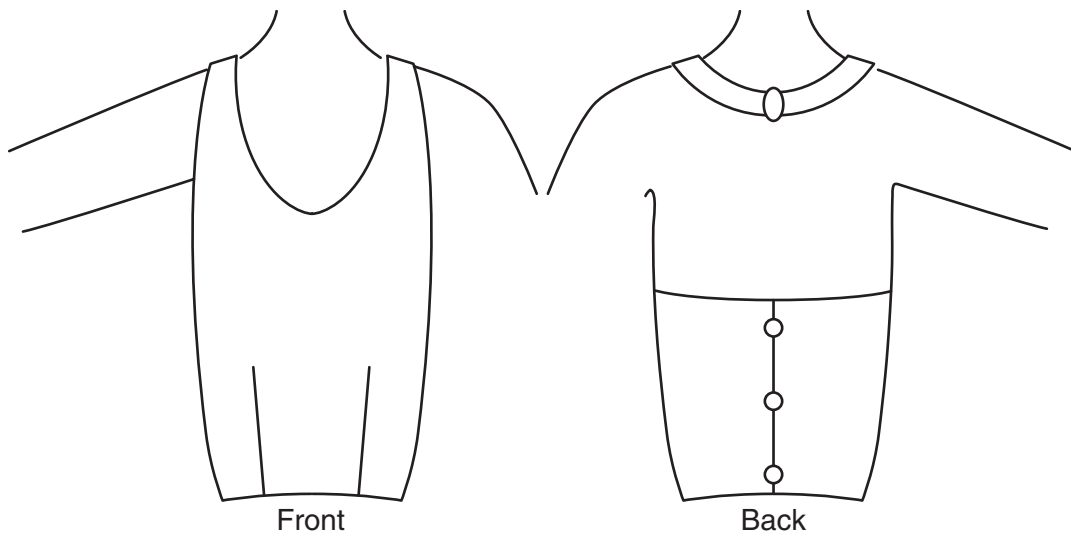
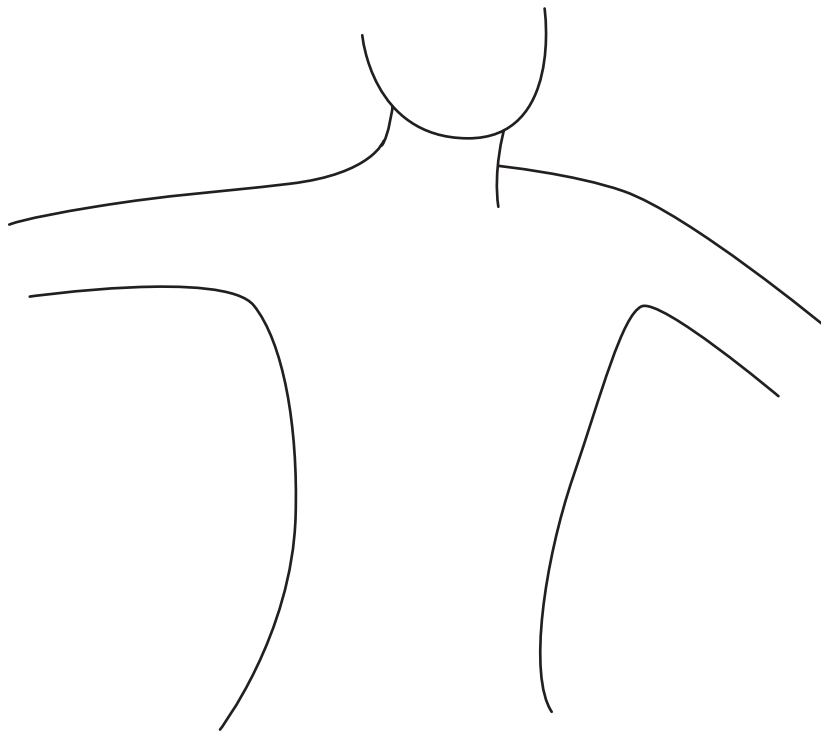


Fig. 7

- (i) Name **one** regenerated fibre that would be suitable to make the fabric used for the bodice.

\_\_\_\_\_ [1]

- (ii) Using notes and sketches show how the bodice design can be developed.  
Do not include details of surface decoration.



[3]

[Total: 10]

12  
BLANK PAGE

PLEASE DO NOT WRITE ON THIS PAGE

---

Permission to reproduce items where third-party owned material protected by copyright is included has been sought and cleared where possible. Every reasonable effort has been made by the publisher (OCR) to trace copyright holders, but if any items requiring clearance have unwittingly been included, the publisher will be pleased to make amends at the earliest possible opportunity.

OCR is part of the Cambridge Assessment Group. Cambridge Assessment is the brand name of University of Cambridge Local Examinations Syndicate (UCLES), which is itself a department of the University of Cambridge.