

OXFORD CAMBRIDGE AND RSA EXAMINATIONS
General Certificate of Secondary Education

D&T: TEXTILES TECHNOLOGY
D&T: TEXTILES TECHNOLOGY
 (SHORT COURSE)



1958/1
1058/1

PAPER 1 (FOUNDATION TIER)

Thursday **25 MAY 2006** Morning 1 hour

Candidates answer on the question paper.
 No additional materials are required.

Candidate
 Name

--

Centre
 Number

--	--	--	--	--

Candidate
 Number

--	--	--	--

TIME 1 hour

INSTRUCTIONS TO CANDIDATES

- Write your name in the space above.
- Write your Centre number and Candidate number in the boxes above.
- Answer **all** questions.
- Write your answers in the spaces provided on the question paper.
- Do not write in the bar code. Do not write in the grey area between the pages.
- **DO NOT WRITE IN THE AREA OUTSIDE THE BOX BORDERING EACH PAGE. ANY WRITING IN THIS AREA WILL NOT BE MARKED.**

INFORMATION FOR CANDIDATES

- The number of marks is given in brackets [] at the end of each question or part question.
- The marks allocated and the spaces provided for your answers are a good indication of the length of answers required.
- The total number of marks for this paper is **50**.

FOR EXAMINER'S USE	
Q1	
Q2	
Q3	
Q4	
Q5	
TOTAL	

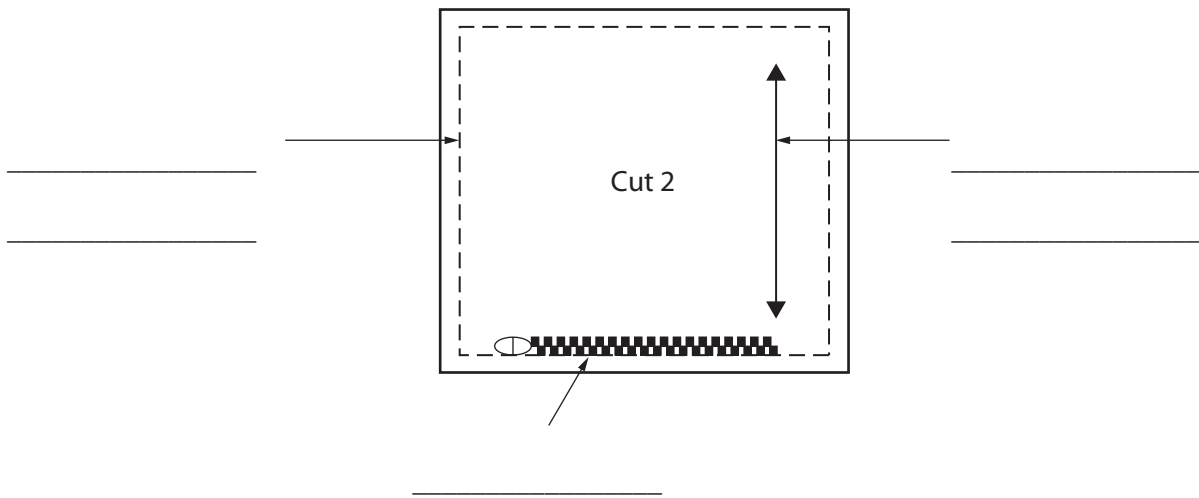
This question paper consists of 11 printed pages and 1 blank page.

1 Fig. 1 shows a cushion.



Fig. 1

- (a) The diagram below shows the pattern piece used to make the cushion. Complete the labels on the diagram to show the meaning of the pattern symbols.



- (b) Complete the table below.
Give one use for each of the tools shown.

Images have been removed due to third party copyright restrictions

Details: Images in the following order: 1. Scissors, 2. Pencil, 3. Pin, 4. Tape measure, 5. Seam Ripper

Tool	Use
1.	for cutting fabric or thread _____
2.	_____
3.	_____
4.	_____
5.	_____

[4]

- (c) Name two fibres or fabrics that could be used to make the cushion.

1 _____ [1]

2 _____ [1]

- (d) The diagram below shows a symbol found on the label attached to the cushion.
State what the symbol means.



_____ [1]

2 Fig. 2 shows a coat.



Fig. 2

(a) Name two components needed to make the coat.

1 _____

2 _____ [2]

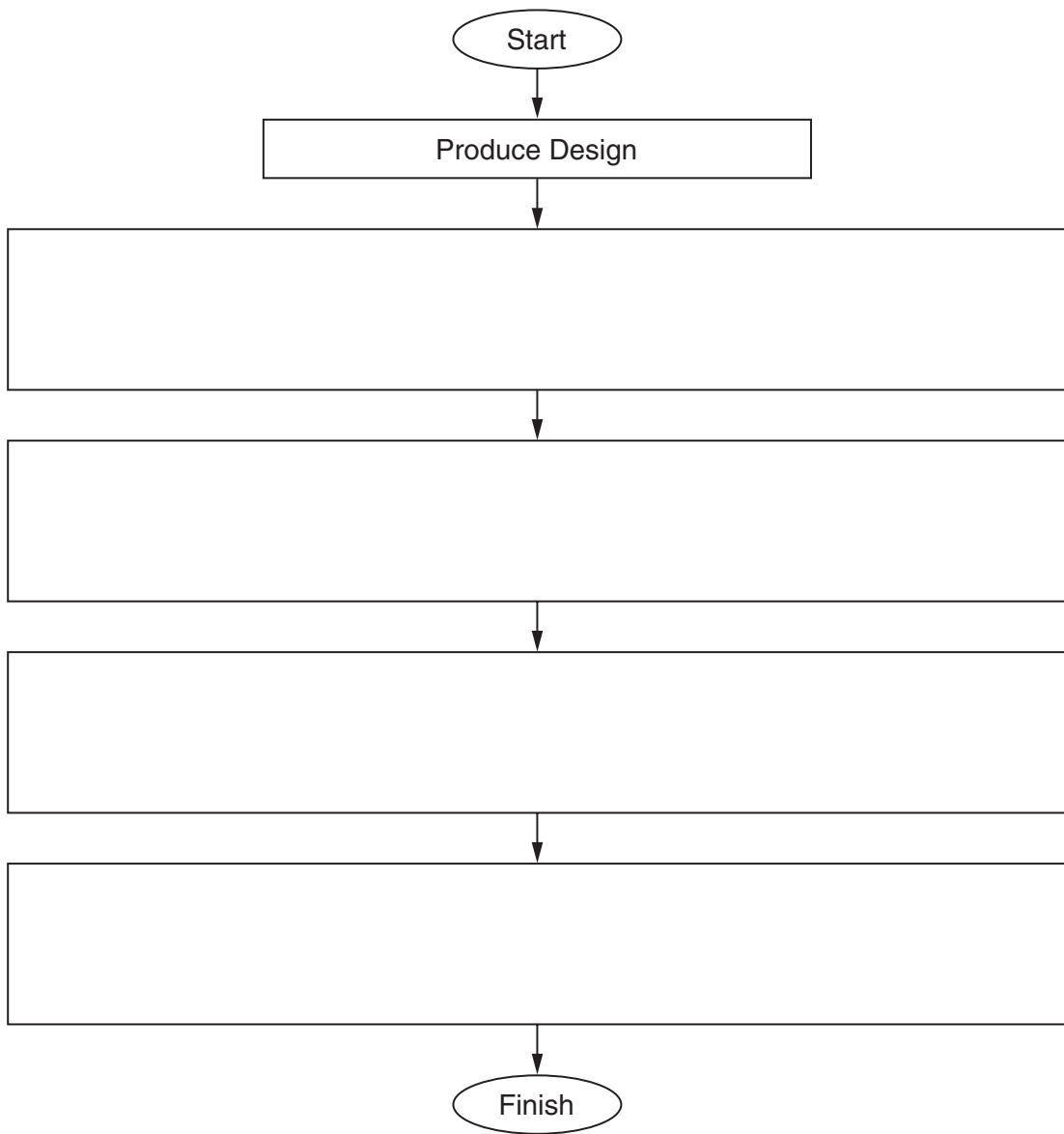
(b) (i) Name one seam that could be used to make the coat.

_____ [1]

(ii) Give one reason for your choice.

_____ [1]

(c) Complete the flow chart below to show how to transfer print the design.



[4]

(d) State **two** quality control checks that should be carried out on the coat during manufacture.

Check one _____

_____ [1]

Check two _____

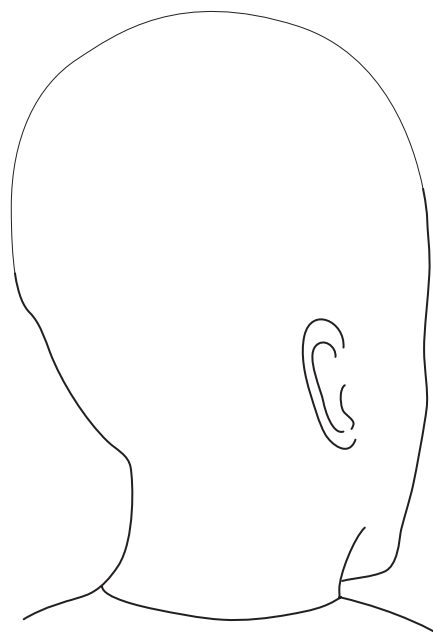
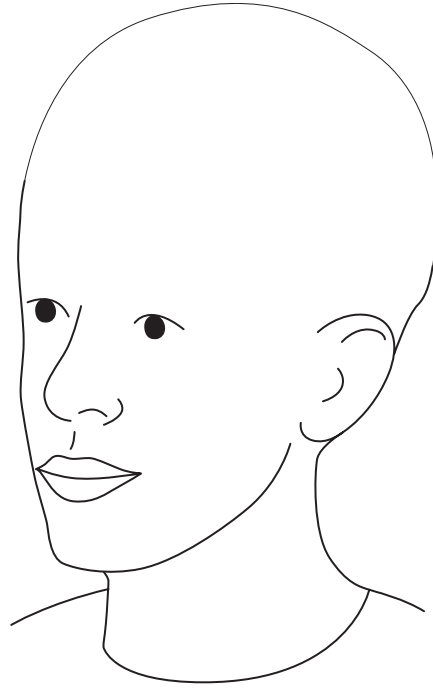
_____ [1]

[Total: 10]

[Turn over

3 Children need to be protected from the sun when playing outdoors.

(a) On the outline below, sketch a design for a sun hat suitable for children at a playgroup. Label your design to show all important design and construction details.



- (b) Choose **three** design features of the hat.
Give **one** reason why each feature is important.

Design feature 1 _____

Reason _____

_____ [1]

Design feature 2 _____

Reason _____

_____ [1]

Design feature 3 _____

Reason _____

_____ [1]

- (c) (i) Name **one** fabric finish that could be applied to the hat fabric to improve its performance characteristics.

_____ [1]

- (ii) Give **one** reason why this finish is suitable for the hat.

_____ [1]

[Total: 10]

- 4 Fig. 3 shows a job production system.
 Fig. 4 shows a batch production system.

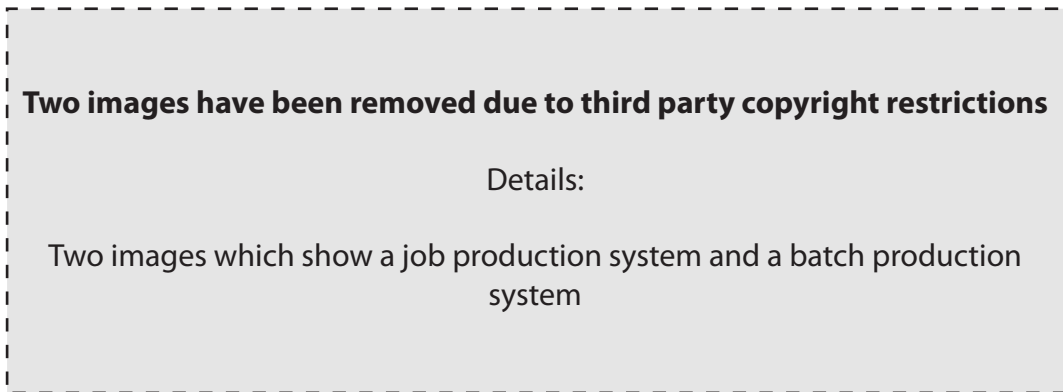


Fig. 3

Fig. 4

- (a) Complete the chart below to highlight the differences in methods used for each stage of manufacture in job and batch production.

Stage	Job Production	Batch Production
Making the pattern	Pattern made to individual customer's measurements	Pattern made to standard sizes, often by computer
Preparing the fabric for cutting	_____	_____
Cutting the fabric	_____	_____
Marking the fabric	_____	_____

(b) The job production system is an expensive method of manufacturing textile products. Give **two** reasons why a manufacturer would use this system.

Reason 1 _____ [1]

Reason 2 _____ [1]

(c) Some British textile companies choose to manufacture their products overseas. Describe **two** consequences of this decision.

1 _____ [1]

2 _____ [1]

[Total: 10]

5 Fig. 5 shows a case for a laptop computer.

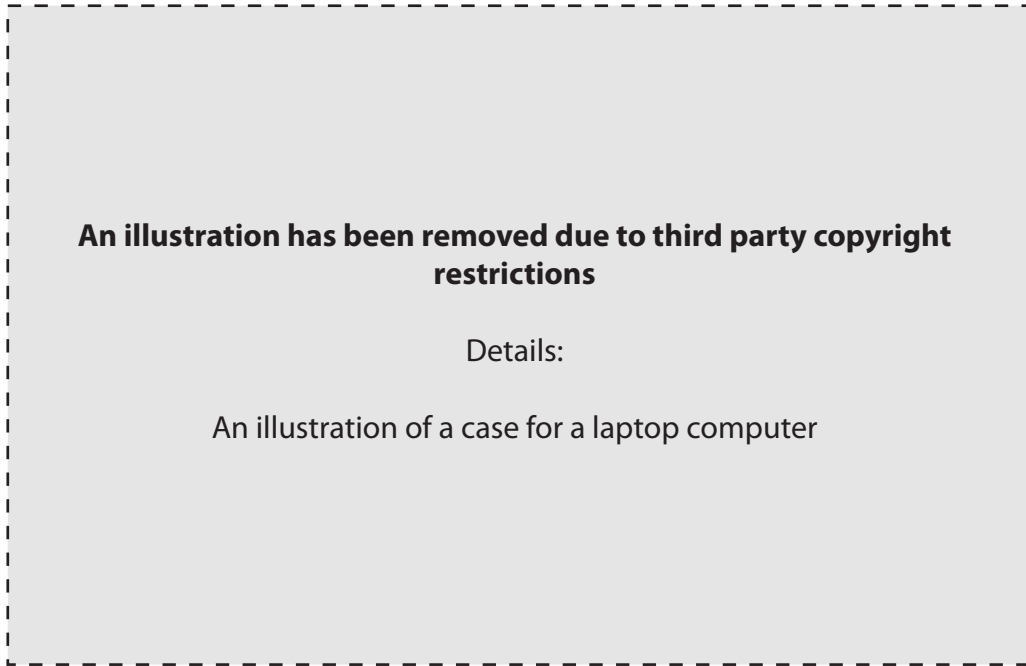


Fig. 5

(a) Give two reasons why a woven polyamide (nylon) fabric is a good choice for the case.

Reason 1 _____
_____ [1]

Reason 2 _____
_____ [1]

(b) Some areas of the case will need to be reinforced to strengthen them.

(i) Identify one area on the case.
_____ [1]

(ii) Describe one way to reinforce this area.

_____ [1]

- (c) Suggest **three** modifications that could be made to the case to improve the design.
Give **one** reason for each modification.

Modification 1 _____
_____ [1]

Reason _____
_____ [1]

Modification 2 _____
_____ [1]

Reason _____
_____ [1]

Modification 3 _____
_____ [1]

Reason _____
_____ [1]

[Total: 10]

12
BLANK PAGE

PLEASE DO NOT WRITE ON THIS PAGE

Permission to reproduce items where third-party owned material protected by copyright is included has been sought and cleared where possible. Every reasonable effort has been made by the publisher (OCR) to trace copyright holders, but if any items requiring clearance have unwittingly been included, the publisher will be pleased to make amends at the earliest possible opportunity.

OCR is part of the Cambridge Assessment Group. Cambridge Assessment is the brand name of University of Cambridge Local Examinations Syndicate (UCLES), which is itself a department of the University of Cambridge.