



GENERAL CERTIFICATE OF SECONDARY EDUCATION
DESIGN AND TECHNOLOGY
Textiles Technology

A574

Technical aspects of designing and making

Candidates answer on the Question Paper

OCR Supplied Materials:
None

Other Materials Required:
None

Wednesday 3 February 2010
Morning

Duration: 1 hour 15 minutes



Candidate Forename		Candidate Surname	
--------------------	--	-------------------	--

Centre Number						Candidate Number				
---------------	--	--	--	--	--	------------------	--	--	--	--

INSTRUCTIONS TO CANDIDATES

- Write your name clearly in capital letters, your Centre Number and Candidate Number in the boxes above.
- Use black ink. Pencil may be used for graphs and diagrams only.
- Read each question carefully and make sure that you know what you have to do before starting your answer.
- Answer **all** the questions in Section A and Section B.
- Do **not** write in the bar codes.
- Write your answer to each question in the space provided.

INFORMATION FOR CANDIDATES

- The number of marks is given in brackets [] at the end of each question or part question.
- The total number of marks for this paper is **60**.
- Your quality of written communication is assessed in the question marked with an asterisk (*).
- This document consists of **12** pages. Any blank pages are indicated.

Section A

Answer **all** questions.

- 1 Fig. 1 shows a quilted oven mitt made from woven cotton fabric.



Fig. 1

- (a) Give **three** reasons why a woven cotton fabric is suitable to make the oven mitt.

- 1 [1]
- 2 [1]
- 3 [1]

- (b) Fig. 2 shows a close up of the woven fabric used to make the oven mitt.

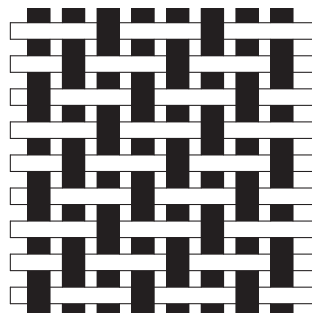


Fig. 2

Name the weave shown.

- [1]

(c) Complete the table below to show how to machine quilt fabrics.

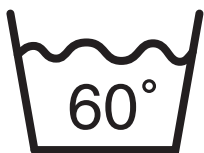
Stage	Method
Preparation of fabrics	
Preparation of machine	
Machine stitching and finishing	

[2]

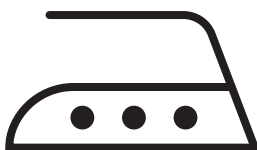
[2]

[2]

(d) Fig. 3 shows two symbols found on the care label attached to the oven mitt. State what each symbol means.



..... [1]



..... [1]

Fig. 3

[Total: 12]

2 Fig. 4 shows a shirt.



Fig. 4

(a) The position of the pocket will have been shown on the paper pattern piece used to make the shirt.



Give **two** ways of transferring the pattern markings from the paper pattern piece to the fabric.

1 [1]

2 [1]

(b) The shirt is made using a sewing machine.

Complete the table below by naming the **two** machine stitches shown.

Machine Stitch	Name
 [1]
 [1]

(c) Give **two** safety rules to follow when using a sewing machine.

1

..... [1]

2

..... [1]

5

(d) Describe, using notes and diagrams, how to work the hem on the shirt.

[6]

[Total: 12]

3 Fig. 5 shows a CD holder.

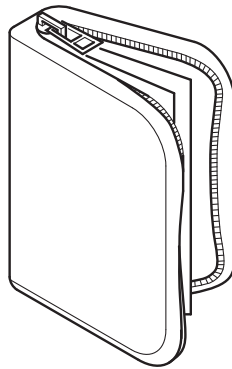


Fig. 5

(a) List **two** techniques that could be used to add decoration to the case.

1 [1]

2 [1]

(b) Manufacturers and retailers are increasingly using the Radio Frequency Identification (RFID) tagging system.

Explain **two** advantages of using the RFID tagging system.

Advantage 1
.....
.....
..... [2]

Advantage 2
.....
.....
..... [2]

Section B

Answer **all** questions.

4 A health food café wishes to introduce a new uniform for its staff.

The uniform should:

- reflect the healthy eating message
- be suitable for male and female staff
- be made from sustainable materials

(a) In the space below, produce **two** sketches with notes to show your initial ideas.

[4]

(b) In the space below, show your final developed design idea.

Annotate your final idea to show all important design and construction details.

[8]

[Total: 12]

.....

.....

.....

..... [6]

[Total: 12]

PLEASE DO NOT WRITE ON THIS PAGE



Copyright Information

OCR is committed to seeking permission to reproduce all third-party content that it uses in its assessment materials. OCR has attempted to identify and contact all copyright holders whose work is used in this paper. To avoid the issue of disclosure of answer-related information to candidates, all copyright acknowledgements are reproduced in the OCR Copyright Acknowledgements Booklet. This is produced for each series of examinations, is given to all schools that receive assessment material and is freely available to download from our public website (www.ocr.org.uk) after the live examination series.

If OCR has unwittingly failed to correctly acknowledge or clear any third-party content in this assessment material, OCR will be happy to correct its mistake at the earliest possible opportunity.

For queries or further information please contact the Copyright Team, First Floor, 9 Hills Road, Cambridge CB2 1GE.

OCR is part of the Cambridge Assessment Group; Cambridge Assessment is the brand name of University of Cambridge Local Examinations Syndicate (UCLES), which is itself a department of the University of Cambridge.