

**GENERAL CERTIFICATE OF SECONDARY EDUCATION
DESIGN AND TECHNOLOGY**

A522

Food Technology
Sustainable Design

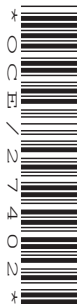
Candidates answer on the question paper.

OCR supplied materials:
None

Other materials required:
None

**Thursday 23 June 2011
Afternoon**

Duration: 1 hour



Candidate forename		Candidate surname	
Centre number		Candidate number	

INSTRUCTIONS TO CANDIDATES

- Write your name, centre number and candidate number in the boxes above. Please write clearly and in capital letters.
- Use black ink. Pencil may be used for graphs and diagrams only.
- Read each question carefully. Make sure you know what you have to do before starting your answer.
- Write your answer to each question in the space provided. Additional paper may be used if necessary but you must clearly show your candidate number, centre number and question number(s).
- Answer **all** the questions in Section A **and** Section B.
- Do **not** write in the bar codes.

INFORMATION FOR CANDIDATES

- The number of marks is given in brackets [] at the end of each question or part question.
- The total number of marks for this paper is **60**.
- Your quality of written communication is assessed in the question marked with an asterisk (*).
- This document consists of **12** pages. Any blank pages are indicated.

Section A

Answer **all** questions.

You are advised to spend about 15 minutes on this section.

On questions 1 – 5 **circle** your answer.

- 1** Which of the following food packages is difficult to recycle?
- (a) Tetra packs
 - (b) Card
 - (c) Paper
 - (d) Glass [1]
- 2** Which food can be sold as 'free range'?
- (a) Fish
 - (b) Eggs
 - (c) Pork
 - (d) Vegetables [1]
- 3** Processed foods usually contain less:
- (a) Sugar
 - (b) Fat
 - (c) Salt
 - (d) Fibre [1]
- 4** When are brussel sprouts in season in the UK?
- (a) July
 - (b) December
 - (c) March
 - (d) August [1]

5 Which of the following is an example of secondary recycling?

- (a) Composting raw vegetables
- (b) Using plastic carrier bags as a bin liner
- (c) Eating left over food
- (d) Using a carrier bag on more than one occasion.

[1]

6 The symbol shown stands for:



.....

[1]

7 Storing food correctly reduces food waste.
State how cheese should be stored in the home.

..... [1]

8 State **one** way to reuse plastic containers.

..... [1]

9 State what is meant by the Ethical Trading Initiative.

..... [1]

10 State **one** optional piece of information manufacturers may decide to put on food packaging.

..... [1]

Decide whether each of the following statements is **true** or **false**.
Tick (✓) the box to show your answer.

11 We should be reducing the amount of salt we eat

True **False**

☐
☐

[1]

12 Frozen food should be stored below -18°C

☐
☐

[1]

13 One function of calcium is heart regulation

☐
☐

[1]

14 Reduced fat products are always low in calories

☐
☐

[1]

15 Some plastic packaging is made from a sustainable source

☐
☐

[1]

Total [15]
Turn over

Section B

Answer **all** questions.

You are advised to spend about 45 minutes on this section.

16 There has been an increase in sales of ready made desserts.

(a) State **two** reasons for this increase.

- 1
-
- 2
- **[2]**

(b) Give **three** reasons why product analysis is carried out on food products.

- 1
-
- 2
-
- 3
- **[3]**

..... [6]

Autumn [4]

Winter [4]

Spring [4]

Summer [4]

© OCR 2011

17 Fig. 1 shows the packaging materials used on a luxury savoury flan product.

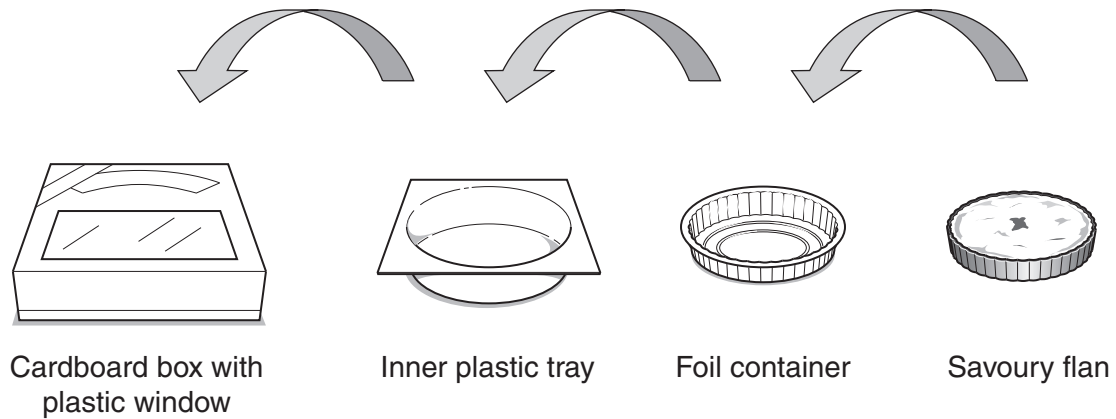


Fig. 1

(a) State **one** part of the packaging material used for the savoury flan which is biodegradable.

..... [1]

(b) The manufacturer wants to improve the packaging to be more environmentally friendly. Explain **three** ways this could be done.

1

.....

.....

.....

.....

2

.....

.....

.....

.....

3

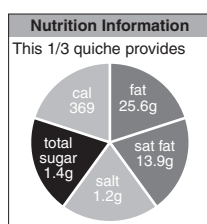
.....

.....

.....

..... [6]

- (c) Fig. 2 shows the nutritional labelling on the front of the savoury flan package. Name this system.



.....

[1]

Fig. 2

Fig. 3 shows the main ingredients used in the savoury flan.

Shortcrust pastry	Pesto, Tomato and Mozzarella Cheese filling	
<ul style="list-style-type: none"> • white flour • butter • water • salt 	<ul style="list-style-type: none"> • double cream • full fat milk • eggs – free range • cherry tomatoes • mozzarella cheese • cheddar cheese 	<ul style="list-style-type: none"> • onion • cornflour • garlic • salt • pepper • pesto

Fig. 3

- (d) The savoury flan is to be changed so that it can be promoted as part of a healthier range of luxury food products. Complete the table below to show **two** different ways this could be done.

Ingredient in Savoury Flan	Ingredient changed to	Reason
1
2

[4]

- (e) The manufacturer has chosen to use free range eggs in the product. Give **one** reason for this.

.....
 [1]

- (f) Consumers need allergy information on food products. State **two** ingredients in the savoury flan which would be listed in the allergy information.

1
 2 [2]

18 It is estimated that consumers throw away £10 billion of food each year.

- (a)** Some of the food thrown away could have been reused to make other dishes.
State **three** safety rules for using left over foods.

1

.....

2

.....

3

..... [3]

- (b)** Give **three** ways a family could reduce their food waste.

1

.....

2

.....

3

..... [3]

- (c)** Explain why there has been an increase in the number of people growing their own vegetables.

.....

.....

.....

.....

.....

.....

.....

.....

..... [3]

Fig. 4 shows the vegetables grown by a gardener in the UK.

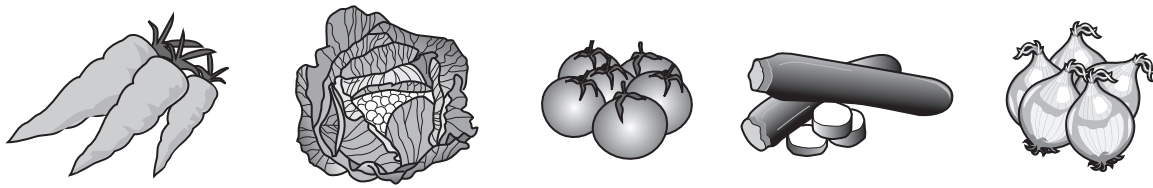


Fig. 4

- (d) The gardener has produced more vegetables than he is able to consume before they start to perish.

Give **three** ways the gardener could ensure these vegetables are not wasted.

1

.....

2

.....

3

..... [3]

- (e) Explain why we are being encouraged to rethink the amount of fruit and vegetables we eat.

.....

.....

.....

.....

.....

.....

.....

..... [3]

Total [15]

10
BLANK PAGE

PLEASE DO NOT WRITE ON THIS PAGE

11
BLANK PAGE

PLEASE DO NOT WRITE ON THIS PAGE

PLEASE DO NOT WRITE ON THIS PAGE



Copyright Information

OCR is committed to seeking permission to reproduce all third-party content that it uses in its assessment materials. OCR has attempted to identify and contact all copyright holders whose work is used in this paper. To avoid the issue of disclosure of answer-related information to candidates, all copyright acknowledgements are reproduced in the OCR Copyright Acknowledgements Booklet. This is produced for each series of examinations and is freely available to download from our public website (www.ocr.org.uk) after the live examination series. If OCR has unwittingly failed to correctly acknowledge or clear any third-party content in this assessment material, OCR will be happy to correct its mistake at the earliest possible opportunity.

For queries or further information please contact the Copyright Team, First Floor, 9 Hills Road, Cambridge CB2 1GE.

OCR is part of the Cambridge Assessment Group; Cambridge Assessment is the brand name of University of Cambridge Local Examinations Syndicate (UCLES), which is itself a department of the University of Cambridge.