

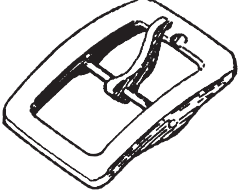

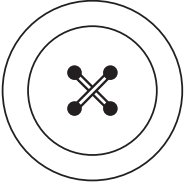
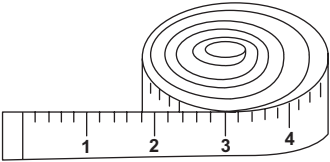
Answer ALL the questions. Write your answers in the spaces provided.

1. The table below shows some components and some items of equipment.

(a) Complete the table below by:

- (i) naming each component or item of equipment
- (ii) describing its use.

The first one has been done for you.

Component/Equipment	Name	Use
	Buckle	Fastening
		
		
		

(6)



(b) A buckle is used to fasten textile items.

Give **two** examples where a buckle could be used as a fastening.

1

2

(2)

(c) Name a suitable fastening for each of the following:

Do **not** use the same fastening more than once.

(i) The front of a cycling jacket.

..... (1)

(ii) The back of a child's summer dress.

..... (1)

(iii) The waistband of a skirt.

..... (1)

Q1

(Total 11 marks)

--	--



2. Cotton denim is used to make jeans.

(a) Name the weave used to make cotton denim fabric.

..... (1)

(b) Give **three** properties of cotton denim fabric.

1

2

3

(3)

(c) The cotton denim used for jeans often has elastane added.

Give **one** advantage of wearing jeans made from cotton denim with elastane.

..... (1)

(d) Cotton gingham is often used for school summer dresses because it is easy to wash.

Give **two** other reasons why cotton gingham is a suitable fabric for school summer dresses.

1

.....

2

.....

(2)

(e) Polyester is often blended with cotton to improve its performance.

Give **one** way the addition of polyester would improve the performance of cotton gingham dresses.

..... (1)



(f) Different types of fabric are to be tested to compare their stain resistance.

Describe how to carry out a stain resistance test in the classroom.

.....

.....

.....

.....

.....

.....

(3)

Q2

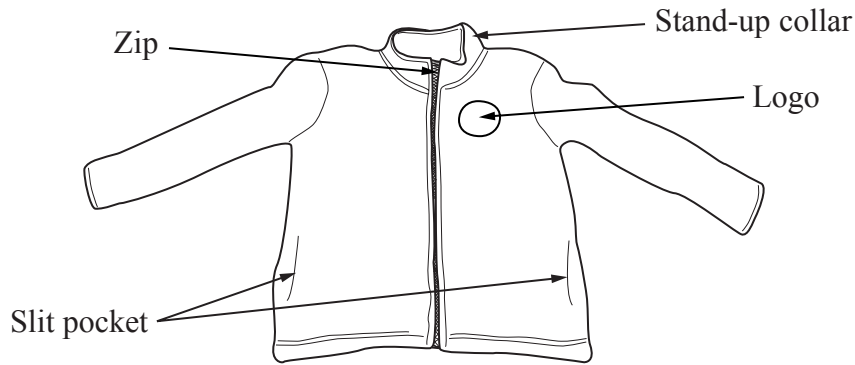
(Total 11 marks)

--	--

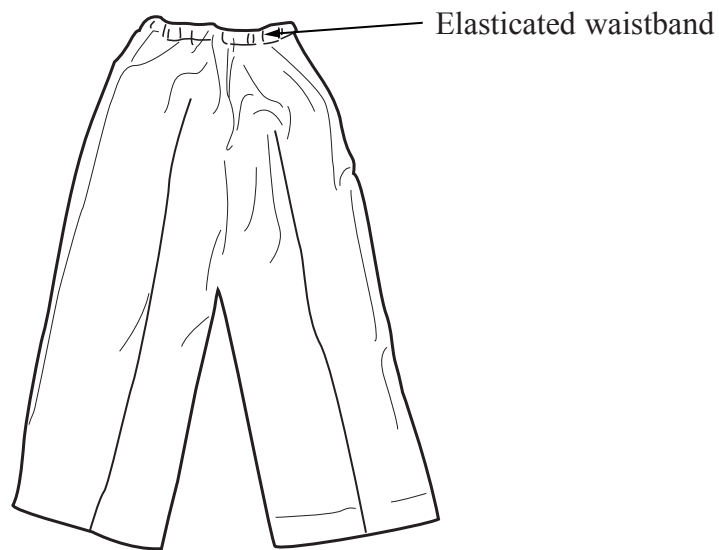


3. The drawings below show a school uniform for a child aged five years.

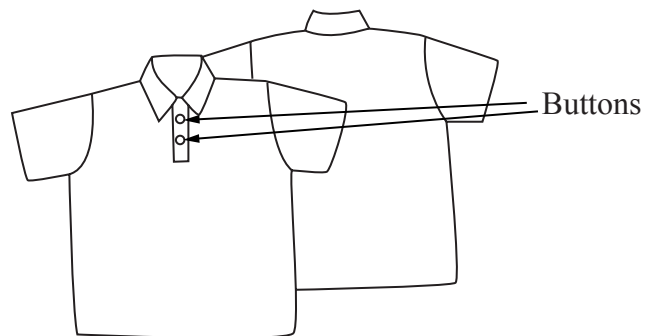
The fleece top is made from polyester produced from recycled plastic bottles, the trousers from a laminated fabric and the short sleeved polo shirt from knitted cotton.



FLEECE TOP



TROUSERS



POLO SHIRT



(a) Two specification points for the school uniform are that it must:

- keep the child warm
- be easy to care for.

Under each of the following headings, give **one** more point that should be included in the specification for the school uniform.

For each point, give **one** reason why it should be included.

(i) **Quality**

Point

Reason

.....

(2)

(ii) **Environment**

Point

Reason

.....

(2)

(iii) **Safety**

Point

Reason

.....

(2)

(b) The polo shirt is made from knitted cotton fabric.

Give **two** reasons why knitted cotton is a suitable fabric from which to make the polo shirt.

1

.....

2

.....

(2)



(c) The logo on the fleece top is produced using a computerised embroidery machine.

Give **two** reasons why computer aided embroidery is a suitable process to manufacture the logo.

1

.....

2

.....

(2)

(d) The trousers are made from a laminated fabric.

Give **two** properties of laminated fabric that make it a suitable material for the trousers.

For each property give **one** reason why it makes it suitable.

Property 1

Reason

.....

Property 2

Reason

.....

(4)

(e) The manufacturer of the school uniform uses sampling during production.

Explain **one** reason for sampling during the manufacture of **the seams** on the garments.

.....

.....

(2)

(f) The polyester for the fleece top is finished by brushing.

Explain **one** reason why brushing is used for finishing the fleece top.

.....

.....

(2)



(g) Two specification points for the school uniform are that it must:

- keep the child warm
- be easy to care for.

Explain under the following headings how the school uniform achieves these purposes.

(i) Keep the child warm.

.....
.....
.....
.....

(2)

(ii) Be easy to care for.

.....
.....
.....
.....

(2)

(Total 22 marks)

Q3

--	--

TOTAL FOR PAPER: 44 MARKS

END



BLANK PAGE



BLANK PAGE



BLANK PAGE

