

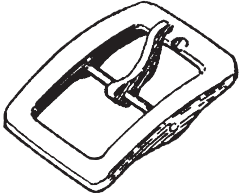

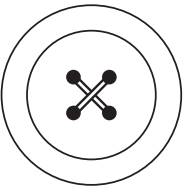
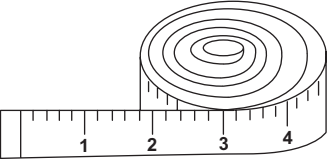
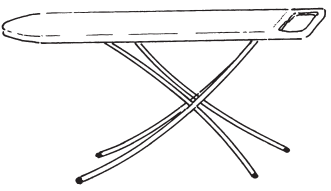
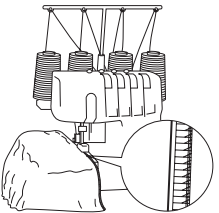
Answer ALL the questions. Write your answers in the spaces provided.

1. The table below shows some components and some items of equipment.

(a) Complete the table below by:

- (i) naming each component or item of equipment
- (ii) describing its use.

The first one has been done for you.

Component/Equipment	Name	Use
	Buckle	Fastening
		
		
		
		
		

(10)



Leave
blank

(b) A buckle is used to fasten textile items.

Give **two** examples where a buckle could be used as a fastening.

1

2

(2)

(c) Name a suitable fastening for each of the following:

Do **not** use the same fastening more than once.

(i) The front of a cycling jacket.

.....

(1)

(ii) The back of a child's summer dress.

.....

(1)

(iii) The waistband of a skirt.

.....

(1)

(d) Batch production is used in the textile industry.

Below is a table which contains three features of batch production.

Mark with a cross (☒) the **three** features of **batch** production.

Production	
Fixed numbers of products made	<input checked="" type="checkbox"/>
Large numbers produced 24 hours a day	<input checked="" type="checkbox"/>
Used to make tights and socks	<input checked="" type="checkbox"/>
Used to make fashion items	<input checked="" type="checkbox"/>
Workforce complete only one operation as the products move around the factory	<input checked="" type="checkbox"/>
Skilled workers carry out more than one part of the construction	<input checked="" type="checkbox"/>

(3)





<p>(e) ICT can be used in lay planning.</p> <p>State four ways the use of an automatic lay planning program can help the manufacturer.</p> <p>1</p> <p>2</p> <p>3</p> <p>4</p> <p style="text-align: right;">(4)</p> <p style="text-align: right;">(Total 22 marks)</p>	Leave blank
	Q1



2. Cotton denim is used to make jeans.

(a) Name the weave used to make cotton denim fabric.

.....
(1)

(b) Give **three** properties of cotton denim fabric.

1

2

3

(3)

(c) The cotton denim used for jeans often has elastane added.

Give **one** advantage of wearing jeans made from cotton denim with elastane.

.....
(1)

(d) Cotton gingham is often used for school summer dresses because it is easy to wash.

Give **two** other reasons why cotton gingham is a suitable fabric for school summer dresses.

1

.....

2

.....

(2)

(e) Polyester is often blended with cotton to improve its performance.

Give **one** way the addition of polyester would improve the performance of cotton gingham dresses.

.....
(1)



(f) Different types of fabric are to be tested to compare their stain resistance.

Describe how to carry out a stain resistance test in the classroom.

.....
.....
.....
.....
.....
.....

(3)

(g) Garments have care labels attached to them.

(i) Give **four** pieces of information that a care label provides to the consumer.

1
2
3
4

(4)

(ii) State **one** reason why consumers need care labels in their clothing.

.....
.....

(1)

(h) CAD and CAM are used to manufacture textile products.

Give **two** benefits to the consumer of garments made using CAD and CAM.

1
2

(2)



Leave
blank

- (i) Producing textile items can cause environmental problems.

Give **two** ways **manufacturers** could reduce their impact on the environment when producing textile items.

1

2

(2)

- (j) Give **two** ways **consumers** could reduce their impact on the environment with regard to textile items.

1

2

(2)

Q2

(Total 22 marks)

7

Turn over



3. An item of sleepwear for children aged one to three is to be made in school.

The specification for the sleepwear is that it must:

- be cool to wear and use lightweight fabric
- be easy to put on and take off for nappy changing
- be decorated using printing and embroidery
- be made using a process suitable for production in a school textiles room.

(a) In the spaces opposite, use sketches and, where necessary, brief notes to show **two different** design ideas for the item of sleepwear that meet this specification.

Do **not** evaluate your designs in part (a).

Candidates are reminded that if pencil is used for diagrams/sketches, it must be dark (HB or B). Coloured pens, pencils and highlighter pens must **not** be used.

PLEASE DO NOT WRITE OR DRAW IN THIS SPACE.

PLEASE USE THE SPACES OPPOSITE FOR YOUR DESIGNS.



Design Idea 1

Leave
blank

(8)

Design Idea 2

(8)



Leave
blank

(b) Three of the original specification points are repeated below.

Evaluate how **one** of your design ideas succeeds or fails to meet each of these specification points.

Write down the number of your chosen idea (1 or 2) here:

(i) Be cool to wear and use lightweight fabric.

.....
.....
.....
.....

(2)

(ii) Be easy to put on and take off for nappy changing.

.....
.....
.....
.....

(2)

(iii) Be decorated using printing and embroidery.

.....
.....
.....
.....

(2)

(Total 22 marks)

Q3

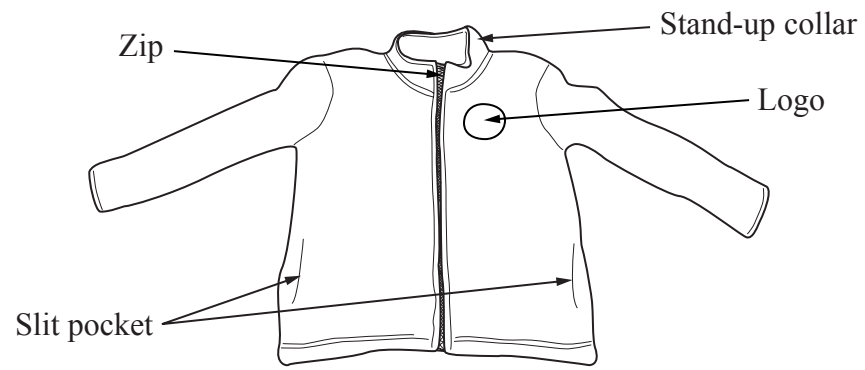


BLANK PAGE

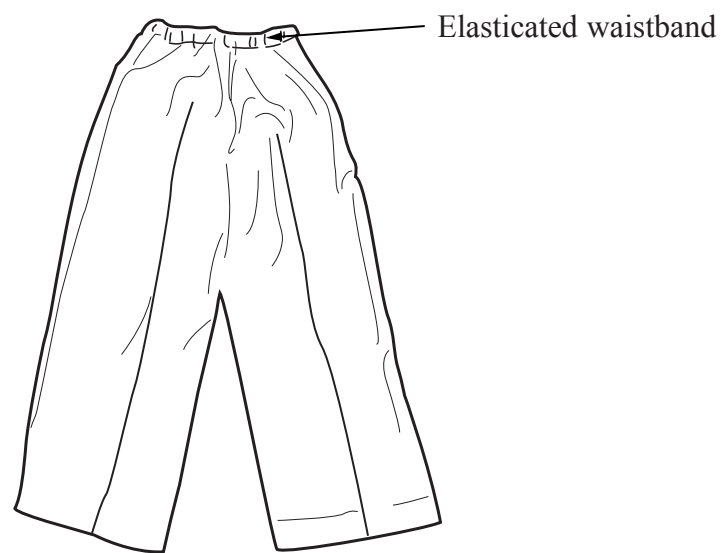


4. The drawings below show a school uniform for a child aged five years.

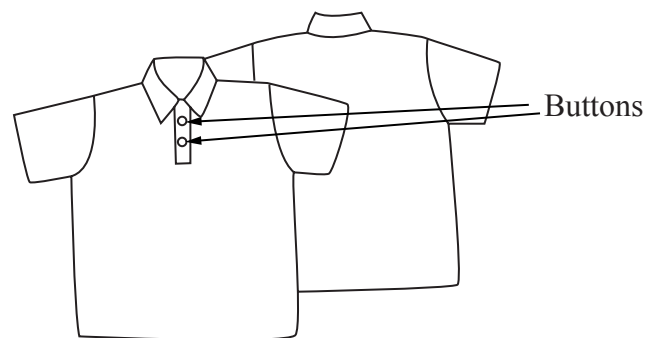
The fleece top is made from polyester produced from recycled plastic bottles, the trousers from a laminated fabric and the short sleeved polo shirt from knitted cotton.



FLEECE TOP



TROUSERS



POLO SHIRT



(a) Two specification points for the school uniform are that it must:

- keep the child warm
- be easy to care for.

Under each of the following headings, give **one** more point that should be included in the specification for the school uniform.

For each point, give **one** reason why it should be included.

(i) **Quality**

Point

Reason

.....

(2)

(ii) **Environment**

Point

Reason

.....

(2)

(iii) **Safety**

Point

Reason

.....

(2)

(b) The polo shirt is made from knitted cotton fabric.

Give **two** reasons why knitted cotton is a suitable fabric from which to make the polo shirt.

1

.....

2

.....

(2)



(c) The logo on the fleece top is produced using a computerised embroidery machine.

Give **two** reasons why computer aided embroidery is a suitable process to manufacture the logo.

1

.....

2

.....

(2)

(d) The trousers are made from a laminated fabric.

Give **two** properties of laminated fabric that make it a suitable material for the trousers.

For each property give **one** reason why it makes it suitable.

Property 1

Reason

.....

Property 2

Reason

.....

(4)

(e) The manufacturer of the school uniform uses sampling during production.

Explain **one** reason for sampling during the manufacture of **the seams** on the garments.

.....

.....

(2)

(f) The polyester for the fleece top is finished by brushing.

Explain **one** reason why brushing is used for finishing the fleece top.

.....

.....

(2)



Leave
blank

(g) Two specification points for the school uniform are that it must:

- keep the child warm
- be easy to care for.

Explain under the following headings how the school uniform achieves these purposes.

(i) Keep the child warm.

.....
.....
.....
.....

(2)

(ii) Be easy to care for.

.....
.....
.....
.....

(2)

(Total 22 marks)

Q4

TOTAL FOR PAPER: 88 MARKS

END



BLANK PAGE

