





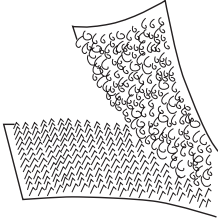

**Answer ALL the questions. Write your answers in the spaces provided.**

1. The table below shows some tools, equipment and components.

(a) Complete the table by:

- (i) naming each tool, piece of equipment or component
- (ii) describing its use.

The first one has been done for you.

Tool/Equipment/Component	Name	Use
	Steam iron	Pressing garments
		
		
		

(6)



(b) A steam iron is used to press garments.

Give **two** safety rules to be followed when using a steam iron.

1 .....

2 .....

(2)

(c) Velvet is a delicate fabric with a nap.

(i) Give **two** rules for pressing velvet.

1 .....

2 .....

(2)

(ii) Give **one** rule for laying pattern pieces on a fabric with a nap.

.....

(1)

Q1

(Total 11 marks)

--	--



2. (a) Fibres are either manufactured or natural.  
The table below lists some fibres.

Mark with a cross (☒) which fibre is manufactured and which is natural.

Fibre	Manufactured	Natural
Acrylic	☒	☒
Linen	☒	☒
Polyester	☒	☒
Silk	☒	☒

(4)

- (b) Yarns can be woven or knitted into fabrics.

- (i) Give **one** characteristic of knitted fabrics.

..... (1)

- (ii) Give **one** characteristic of woven fabrics.

..... (1)

- (c) Fabrics can be constructed by weaving.

Name **three** different weaves.

1 .....

2 .....

3 .....

(3)

- (d) Knitted fabric is used to make sweatshirts.

Explain **one** reason why knitted fabric is used to make sweatshirts.

.....

.....

.....

(2)

(Total 11 marks)

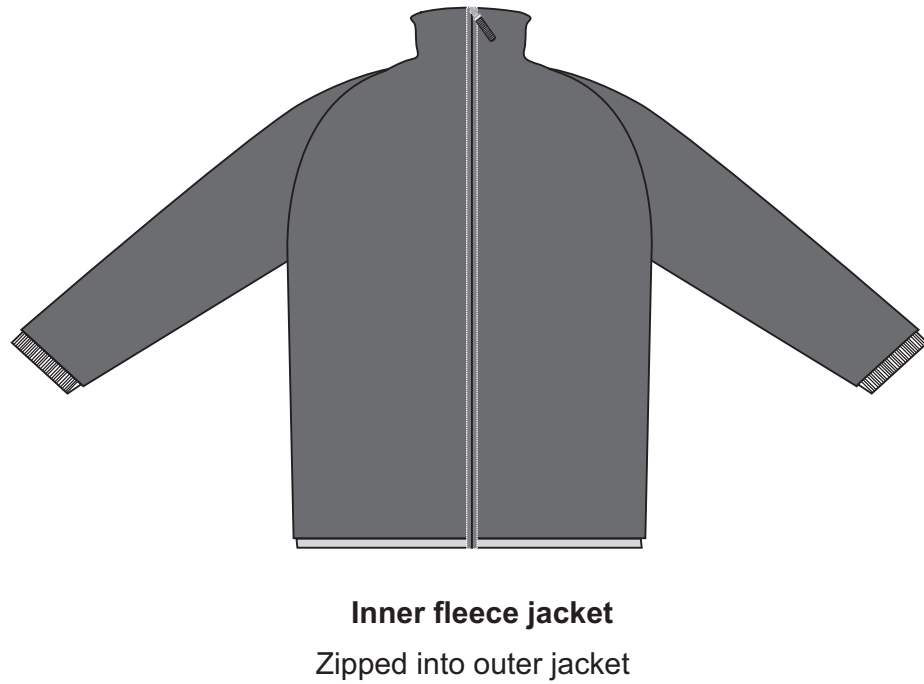
Q2



**BLANK PAGE**



3. The drawing below shows an all weather jacket. This consists of a coated polyester outer jacket and a Polartec fleece inner jacket.



(a) Two specification points for the all weather jacket are that it must:

- protect the wearer from wind and rain
- be seen in the dark.

Under each of the following headings, give **one** more point that should be included in the specification for the all weather jacket.

For each point, give **one** reason why it should be included.

(i) The needs of the user.

Point .....

Reason .....

.....

.....

**(2)**

(ii) Environmental considerations.

Point .....

Reason .....

.....

.....

**(2)**

(iii) Quality.

Point .....

Reason .....

.....

.....

**(2)**



(b) The inner fleece jacket is made from Polartec.

One reason for using Polartec to make the inner fleece jacket is that it is made from recycled plastic bottles.

Give **two** other reasons why Polartec is a suitable material from which to make the inner fleece jacket.

1 .....

2 .....

(2)

(c) The seams on the outer jacket are bonded.

Give **two** reasons why bonding is a suitable joining method for the seams of the outer jacket.

1 .....

2 .....

(2)

(d) The outer jacket is made from polyester with a weatherproof coating.

Give **two** properties of polyester with a weatherproof coating that make it a suitable material for the outer jacket.

For each property give **one** reason why it makes it suitable.

Property 1 .....

Reason .....

.....

Property 2 .....

Reason .....

.....

(4)

(e) Quality control checks are carried out at important stages during the manufacture of the all weather jacket.

Name **two** important quality control checks that should be made during the manufacture of the all weather jacket.

1 .....

2 .....

(2)





(f) The design of the jacket logo is made in batches using a CNC machine.

Describe **one** way in which a CNC machine is suitable for batch production of the logo.

.....  
.....

**(2)**

(g) Two specification points for the all weather jacket are that it must:

- protect the wearer from wind and rain
- be seen in the dark.

Explain under the following headings, how the all weather jacket achieves these purposes.

(i) Protect the wearer from wind and rain.

.....  
.....  
.....  
.....

**(2)**

(ii) Be seen in the dark.

.....  
.....  
.....  
.....

**(2)**

**Q3**

--	--

**(Total 22 marks)**

**TOTAL FOR PAPER: 44 MARKS**

**END**



**BLANK PAGE**



**BLANK PAGE**



**BLANK PAGE**

