



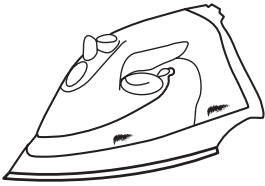

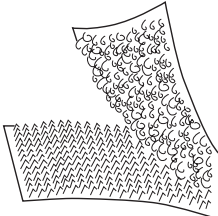

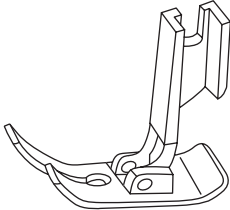
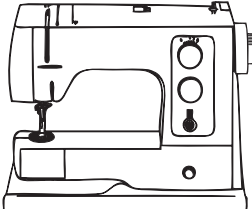
Answer ALL the questions. Write your answers in the spaces provided.

1. The table below shows some tools, equipment and components.

(a) Complete the table by:

- (i) naming each tool, piece of equipment or component
- (ii) describing its use.

The first one has been done for you.

Tool/Equipment/Component	Name	Use
	Steam iron	Pressing garments
		
		
		
		
		

(10)



(b) A steam iron is used to press garments.

Give **two** safety rules to be followed when using a steam iron.

- 1 .....
- 2 ..... (2)

(c) Velvet is a delicate fabric with a nap.

(i) Give **two** rules for pressing velvet.

- 1 .....
- 2 ..... (2)

(ii) Give **one** rule for laying pattern pieces on a fabric with a nap.

- ..... (1)

(d) ICT can be used for lay planning.

Give **two** reasons a manufacturer would use ICT for lay planning.

- 1 .....
- 2 ..... (2)

(e) Computer 2D/3D modelling is used to create ‘virtual’ products on screen. This can speed up the production of garments.

Give **three** reasons (other than speed) why manufacturers use computer 2D/3D modelling rather than making sample garments.

- 1 .....
- 2 .....
- 3 ..... (3)

(f) Computer Integrated Manufacture (CIM) is the passing of information from the computer to the manufacturing process.

Give **two** reasons why CIM is used in batch production.

- 1 .....
- 2 ..... (2)

(Total 22 marks)

Q1

--	--



2. (a) Fibres are either manufactured or natural.  
The table below lists some fibres.

Mark with a cross (☒) which fibre is manufactured and which is natural.

Fibre	Manufactured	Natural
Acrylic	☒	☒
Linen	☒	☒
Polyester	☒	☒
Silk	☒	☒

(4)

- (b) Yarns can be woven or knitted into fabrics.

- (i) Give **one** characteristic of knitted fabrics.

..... (1)

- (ii) Give **one** characteristic of woven fabrics.

..... (1)

- (c) Fabrics can be constructed by weaving.

Name **three** different weaves.

- 1 .....
- 2 .....
- 3 ..... (3)

- (d) Knitted fabric is used to make sweatshirts.

Explain **one** reason why knitted fabric is used to make sweatshirts.

.....

.....

..... (2)



(e) Fashion trends rarely last longer than one season.

Give **two** moral reasons why this may be a problem.

1 .....

2 .....

**(2)**

(f) Unwanted garments can be recycled.

Give **three** reasons why it is important to recycle unwanted garments.

1 .....

2 .....

3 .....

**(3)**

(g) British Standards regulations give consumers information about safety.

Give **two** advantages to the consumer of having a safety label attached to childrens' items.

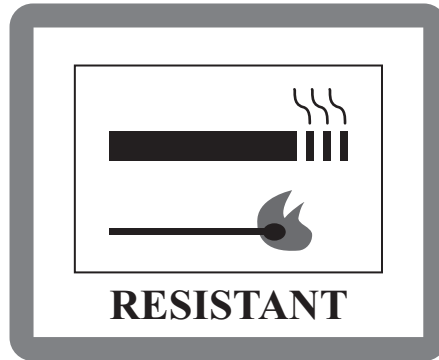
1 .....

2 .....

**(2)**



- (h) All soft furnishing fabrics should comply with safety regulations.  
The label below should be attached to all soft furnishings sold in the UK.



Give **two** pieces of information this label provides to the consumer.

1 .....

2 .....

(2)

- (i) CAD/CAM is used to produce textiles products.

Describe **one** advantage to the consumer of using CAD/CAM to produce textiles products.

.....

.....

(2)

Q2

(Total 22 marks)



**BLANK PAGE**



3. A school has decided that all pupils should have a bag to carry their books and pens.

The specification for the school bag is that it must:

- have separate sections for books and pens
  - fasten securely and easily
  - be easy and comfortable to carry
  - be made from materials and processes suitable for production in a school's textile room.
- (a) In the spaces opposite, use sketches and, where necessary, brief notes to show **two different** design ideas for the school bag that meet this specification.

Do **not** evaluate your designs in part (a).

Candidates are reminded that if pencil is used for diagrams/sketches, it must be dark (HB or B). Coloured pens, pencils and highlighter pens must **not** be used.

**PLEASE DO NOT WRITE OR DRAW IN THIS SPACE.**

**PLEASE USE THE SPACES OPPOSITE FOR YOUR DESIGNS.**





**Design Idea 1**

**(8)**

---

**Design Idea 2**

**(8)**



(b) Three of the original specification points are repeated below.

Evaluate how **one** of your design ideas succeeds or fails to meet each of these specification points.

Write down the number of your chosen design idea (1 or 2) here: .....

(i) The school bag must have separate sections for books and pens.

.....  
.....  
.....

(2)

(ii) The school bag must fasten securely and easily.

.....  
.....  
.....

(2)

(iii) The school bag must be easy and comfortable to carry.

.....  
.....  
.....

(2)

Q3

--	--

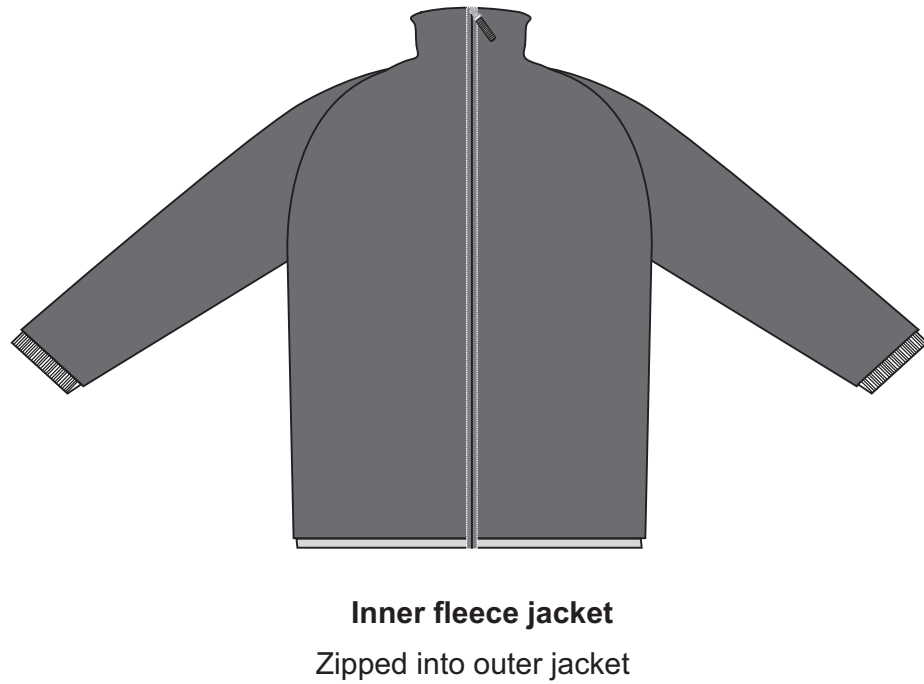
(Total 22 marks)



**BLANK PAGE**



4. The drawing below shows an all weather jacket. This consists of a coated polyester outer jacket and a Polartec fleece inner jacket.



(a) Two specification points for the all weather jacket are that it must:

- protect the wearer from wind and rain
- be seen in the dark.

Under each of the following headings, give **one** more point that should be included in the specification for the all weather jacket.

For each point, give **one** reason why it should be included.

(i) The needs of the user.

Point .....

Reason .....

.....

.....

**(2)**

(ii) Environmental considerations.

Point .....

Reason .....

.....

.....

**(2)**

(iii) Quality.

Point .....

Reason .....

.....

.....

**(2)**



(b) The inner fleece jacket is made from Polartec.

One reason for using Polartec to make the inner fleece jacket is that it is made from recycled plastic bottles.

Give **two** other reasons why Polartec is a suitable material from which to make the inner fleece jacket.

1 .....

2 ..... (2)

(c) The seams on the outer jacket are bonded.

Give **two** reasons why bonding is a suitable joining method for the seams of the outer jacket.

1 .....

2 ..... (2)

(d) The outer jacket is made from polyester with a weatherproof coating.

Give **two** properties of polyester with a weatherproof coating that make it a suitable material for the outer jacket.

For each property give **one** reason why it makes it suitable.

Property 1 .....

Reason .....

.....

Property 2 .....

Reason .....

..... (4)

(e) Quality control checks are carried out at important stages during the manufacture of the all weather jacket.

Name **two** important quality control checks that should be made during the manufacture of the all weather jacket.

1 .....

2 ..... (2)



(f) The design of the jacket logo is made in batches using a CNC machine.

Describe **one** way in which a CNC machine is suitable for batch production of the logo.

.....  
.....

(2)

(g) Two specification points for the all weather jacket are that it must:

- protect the wearer from wind and rain
- be seen in the dark.

Explain under the following headings, how the all weather jacket achieves these purposes.

(i) Protect the wearer from wind and rain.

.....  
.....  
.....  
.....

(2)

(ii) Be seen in the dark.

.....  
.....  
.....  
.....

(2)

Q4

--	--

(Total 22 marks)

**TOTAL FOR PAPER: 88 MARKS**

**END**



**BLANK PAGE**

