

Centre Number						Candidate Number				
Surname										
Other Names										
Candidate Signature										



General Certificate of Secondary Education
Specimen Paper

Design and Technology Textiles Technology

XXXX/W

Unit 1: Written Paper

Date: Time

<p>For this paper you must have:</p> <ul style="list-style-type: none"> a pen, a pencil, a ruler, an eraser, a pencil sharpener and coloured pencils.

Time allowed: 2 Hours

Instructions

- Use black ink or ball-point pen. Use pencil only for drawing.
- Fill in the boxes at the top of this page.
- Answer **all** questions.
- Answer the questions in the spaces provided.
- Do all rough work in this book. Cross through any work you do not want to be marked.

Information

- The maximum mark for this paper is 120.
- The marks for questions are shown in brackets.
- The question in Section A relates to the context referred to in the preparation sheet that was previously issued.
- You are reminded of the need for good English and clear presentation in your answers. Quality of Written Communication will be assessed in question 8 (d).

For Examiner's Use	
Examiner's Initials	
Question	Mark
1	
2	
3	
4	
5	
6	
7	
8	
TOTAL	

XXXX/W

SECTION A

You should answer this question.

Question 1 is about design ideas for a bag.

You are advised to spend about 30 minutes on this question.

- 1(a) You are required to show your design ideas for a bag.
Use the information given in the design brief below.

Design Brief

A specialist bag shop sells many different types of bag.
You have been asked to design and make a bag to be sold in the shop.
The bag must:

- be based on the theme of Pop Art
- have an appliqué decoration
- include a method of carrying or hanging the bag
- be suitable for industrial production.



- 1(a) (i) Use pencil to draw and label **two** different design ideas for your product.
Marks will be given for the quality of the ideas and the notes and sketches.
(2 × 3 marks)

Design Idea A

Design Idea B

Turn over ►



Barcode

- 1 (a) Choose **one** of your design ideas for development.
Tick the box to show the idea you would choose.

Design Idea A

Design Idea B

- 1 (a) (ii) Analyse and evaluate how the design idea you have chosen will appeal to a specific target market.

.....
.....
.....
.....
.....

(4 marks)

- 1 (b) Use sketches, labelling and notes to present a final design for your bag.
You have this page and the next to present your design.
You must show a front and a back view.

Marks will be given for:

- use of the Pop Art theme *(3 marks)*
- originality and quality of the design including the appliqué,
method of carrying or hanging the bag and use of emerging
technologies *(8 marks)*
- use of colour *(3 marks)*
- use of fabrics and components *(4 marks)*
- presentation of the final idea. *(2 marks)*



Turn over ►



Barcode

SECTION B

You should answer **all** questions in this section.

Question 2 is about ways of researching.

You are advised to spend about 5 minutes on this question.

2 (a) Analyse how information about recent sales figures might be useful when planning new products.

.....
.....
.....

(3 marks)

2 (b) Designers often study the work of others to give them ideas for new products. Give **two** advantages of doing this.

1.....
2.....

(2 marks)

<hr/> 5



Barcode

Question 3 is about developing design ideas.

You are advised to spend about 13 minutes on this question.

- 3 (a) Colour can be added to products in many different ways.
Complete the table below by giving **one** advantage and **one** disadvantage of each of the ways of adding colour to products.

(6 marks)

Way of adding colour	Advantage	Disadvantage
Tie dye
Screen printing
Embroidery

- 3 (b) A design team will make a *final prototype* of a new product.

- 3 (b) (i) What is a prototype?

.....

(1 mark)

Turn over ►



3 (b) (ii) Give **three** detailed reasons for making a prototype.

1.....

.....

2.....

.....

3.....

.....

(6 marks)



Question 4 is about manufacturing techniques.

You are advised to spend about 18 minutes on this question.

4 Appliqué is a popular method of decorating textile products.

4 (a) Explain why appliqué could be a suitable technique to decorate a textile product.

.....

.....

.....

(3 marks)

4 (b) Use notes and diagrams to explain how to work appliqué.
Include information about materials and equipment that will be needed.

(6 marks)



Barcode

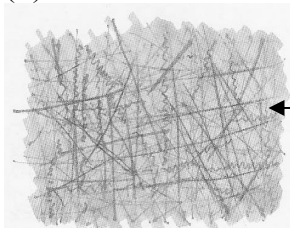
Turn over ►

4 (c) (i) Manufacturers use an interfacing like ‘Bondaweb’ when making appliqué.
Explain why this will be used.

.....
.....
.....

(3 marks)

4 (c) (ii)



The interfacing is a non-woven fabric

Give **two** reasons why a *non-woven fabric* is used.

1.....

2.....

(2 marks)

4 (c) (iii) Using the interfacing will add to the costs of manufacture.
Consider the reasons why the manufacturer might consider these costs worthwhile.

.....
.....
.....
.....
.....
.....

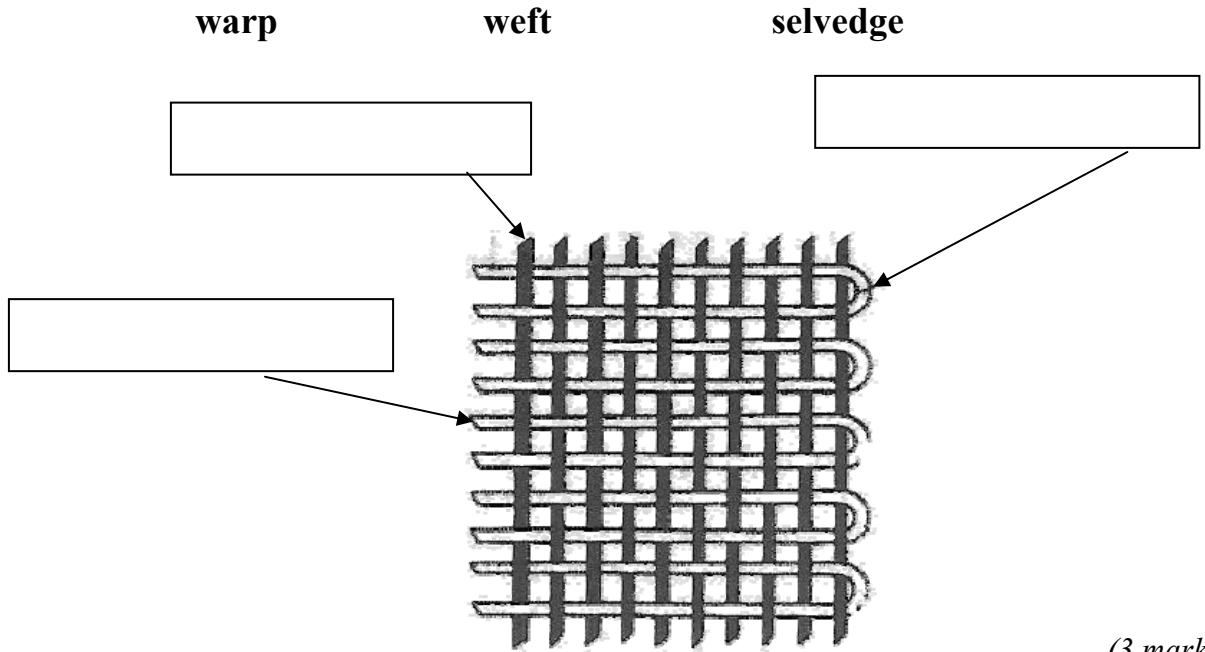
(4 marks)



Question 5 is about fabrics.

You are advised to spend about 15 minutes on this question.

5 (a) (i) Label the diagram below by placing each of the following in the correct box.



5 (a) (ii) What is the name of the weave shown above?

.....
(1 mark)

5 (b) (i) A fabric using this weave is made from 100% cotton.
Explain **three** properties of this cotton fabric.

1.....
.....
2.....
.....
3.....
.....

(6 marks)

Turn over ►



5 (b) (ii) How would using a blend of polyester and cotton change the properties of the fabric?

.....

.....

.....

.....

.....

.....

.....

.....

.....

(5 marks)

15



Barcode

Question 6 is about industrial production systems.

You are advised to spend about 10 minutes on this question.

- 6 (a) Computers can be used to help manufacturing.
Give **two** advantages when using them to lay and cut out fabric.

1.....

2.....

(2 marks)

- 6 (b) Some parts of products are made as a *sub-assembly*.

- 6 (b) (i) What is meant by a sub-assembly?

.....

(1 mark)

- 6 (b) (ii) Give **two** reasons why sub-assembly is used in industrial manufacture.

1.....

2.....

(2 marks)

- 6 (c) Industrial sewing machines work very fast.

- 6 (c) (i) Give **two** dangers when using an industrial sewing machine.

1.....

2.....

(2 marks)

- 6 (c) (ii) How can a manufacturer reduce these dangers?

.....

.....

.....

.....

(3 marks)

Turn over ►



Question 7 is about new developments in textiles.
You are advised to spend about 12 minutes on this question.

7 (a) What are smart fabrics?

.....
.....
.....

(2 marks)

7(b) (i) Name **one** smart fabric.

.....

(1 mark)

7(b) (ii) What is special about the features of the fabric?

.....
.....
.....

(2 marks)

7 (b) (iii) What is the fabric used for?

.....
.....
.....

(2 marks)



Barcode

7 (c) Analyse the impact of developments in nanotechnology on textile materials.
Give specific examples in your answer.

.....

.....

.....

.....

.....

.....

.....

.....

.....

(5 marks)

12



Barcode

Question 8 is about textile products and the consumer.

You are advised to spend about 17 minutes on this question.

8 Study the photographs of the two cushions on the Insert Sheet.
Answer the questions which follow.

8 (a) (i) Explain **one** way in which fabric makes the cushions attractive.

.....
.....
.....

(2 marks)

8 (a) (ii) How are components used to make the cushions attractive? Use **one** example to support your answer.

.....
.....
.....

(2 marks)

8 (b) Evaluate the use of zips to fasten the back of these cushion covers.

.....
.....
.....
.....

(4 marks)

8 (c) Look carefully at **Cushion A** on the Insert Sheet.

8 (c) Analyse briefly how you could change the **design** so it would be cheaper to make.

.....
.....
.....

(2 marks)



- 8 (d)** The cushions will be fashionable for only a short time.
Discuss the environmental issues related to the manufacture of such ‘throw away’ products.

.....

.....

.....

.....

.....

.....

.....

.....

.....

.....

.....

.....

.....

.....

.....

.....

.....

(7 marks)

END OF QUESTIONS



Barcode



General Certificate of Secondary Education
Foundation Tier
Specimen Paper

Design and Technology

Textiles Technology

Unit 1: Written Paper

Insert

Photograph to be used when answering Question 8

Front of cushion A



Front of cushion B

