
0	1
---	---

Oxides of nitrogen are produced when fuels are burnt.

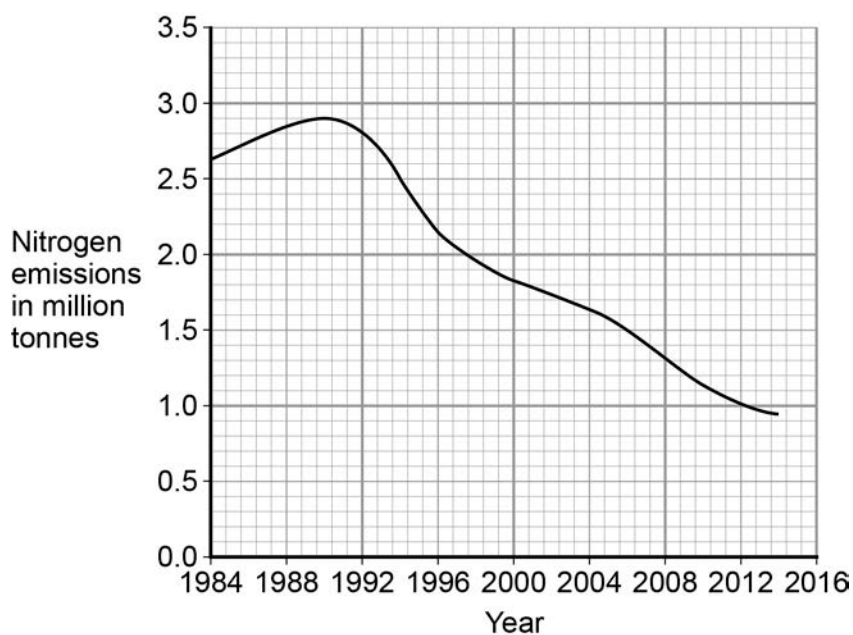
0	1	.	1
---	---	---	---

Write a balanced symbol equation for the production of nitrogen dioxide (NO₂) from nitrogen and oxygen.

[2 marks]

0 1 . 2 Figure 1 gives information about emissions of oxides of nitrogen in the UK.

Figure 1



Calculate the percentage decrease in emissions of oxides of nitrogen from 1990 to 2014.

Give your answer to three significant figures.

[3 marks]

Percentage decrease = _____ %

0 1 . 3 Give **one** advantage of reducing the emissions of oxides of nitrogen.

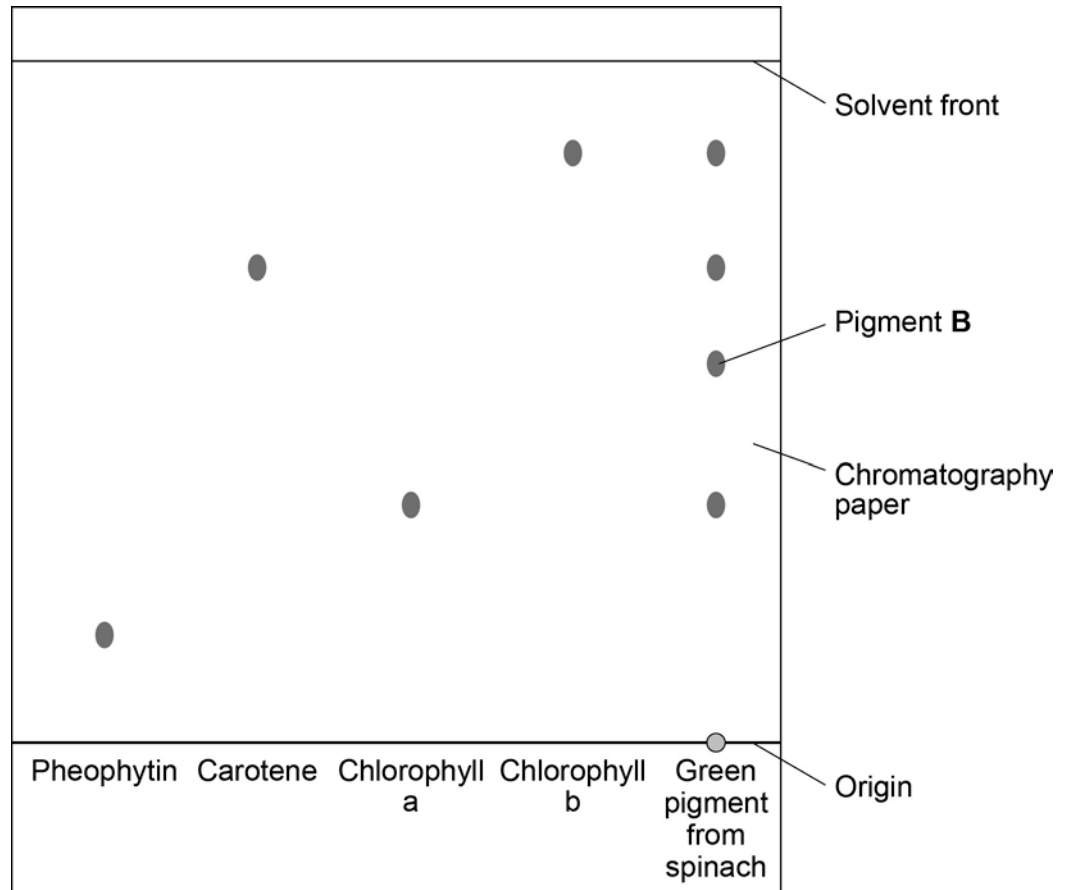
[1 mark]

0 2

A student used chromatography to identify the pigments in spinach leaves.
She used propanone as a solvent.

Figure 2 shows the student's results.

Figure 2



0 2 . 1

Name the mobile phase and the stationary phase in the student's experiment.

[2 marks]

Mobile phase _____

Stationary phase _____

0 2 . 2 What does **Figure 2** tell you about the green pigment from spinach?

[3 marks]

0 2 . 3 Write the equation that links distance moved by solvent, distance moved by solute and R_f value.

[1 mark]

0 2 . 4 Use **Figure 2** to calculate the R_f value for pigment **B**.

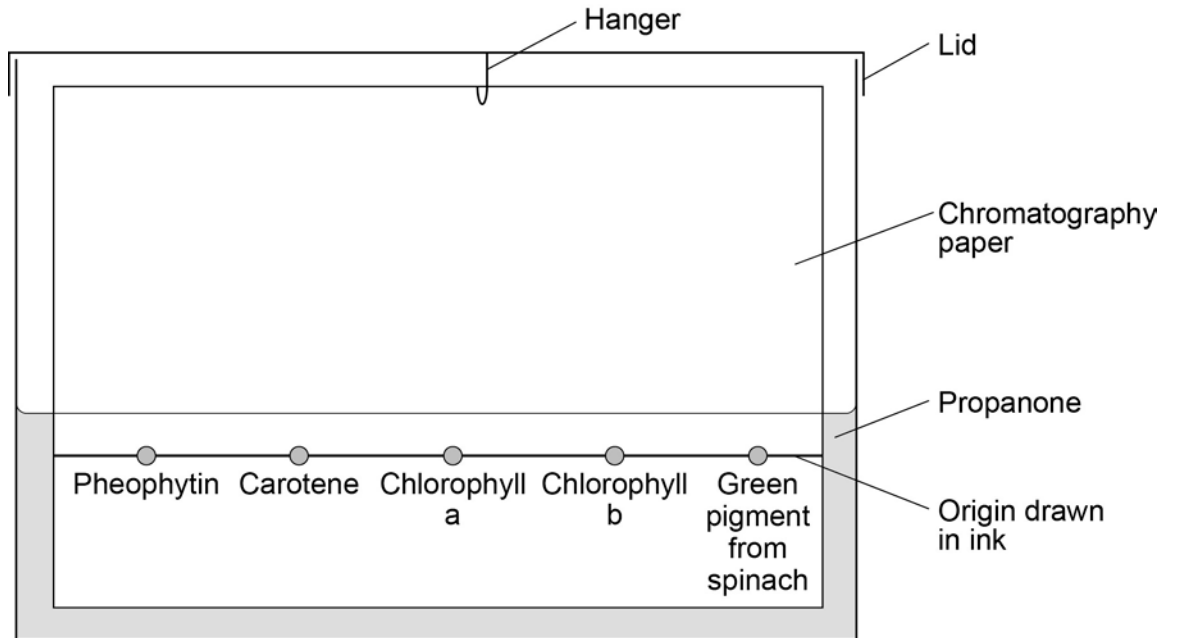
[3 marks]

R_f value = _____

Question 2 continues on the next page

0 2 . 5 Another student set up the apparatus shown in **Figure 3**.

Figure 3



This student did not set up the apparatus correctly.

Identify the errors the student made.

Explain how the errors she made would affect her results.

[4 marks]

Turn over for the next question

Table 1 shows the student's results.

Table 1

Metal	Mass of material in kg	Time in minutes	Temperature change in °C	Change in thermal energy in J	Calculated specific heat capacity of material in J/kg °C
Aluminium	1	10	2	4 780	2 390
Brass	1	10	4	4 660	1 165
Copper	1	10		4 600	657
Steel	1	10	5	4 690	938

0 3 . 2 Use data from Table 1 to calculate the temperature change for copper.

Use the correct equation from the Physics Equation Sheet.

[3 marks]

Temperature change = _____ °C

0 3 . 3 What is the independent variable in the student's investigation?

[1 mark]

Tick **one** box.

Mass of material

Power used

Time in minutes

Type of material

0 3 . **4** The student calculated the specific heat capacity of aluminium to be 2 390 J/kg °C.

The 'true' specific heat capacity of aluminium is 900 J/kg °C.

Suggest why the student's result for aluminium is different from the 'true' value.

[2 marks]

0 3 . **5** The teacher suggested that putting bubble wrap round the metal block would change the results.

How would using bubble wrap change the results?

Give a reason for your answer.

[2 marks]

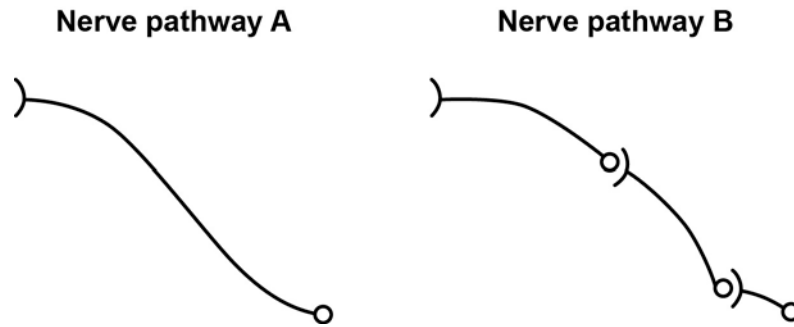
Turn over for the next question

0 4

The nervous system allows humans to respond to their surroundings.

Figure 4 shows two nerve pathways.

Figure 4

**0 4 . 1**

Nerve pathway **A** is 92 cm long.

A nerve impulse travels along pathway **A** at 76.2 m/s.

Calculate how long it takes for the nerve impulse to travel the length of the pathway.

Use the equation:

$$\text{distance} = \text{speed} \times \text{time}$$

[3 marks]

Time = _____ s

0 4 . **2** Nerve pathways **A** and **B** are the same length.

The nerve impulse takes longer to travel along pathway **A** than along pathway **B**.

Use **Figure 4** to explain why.

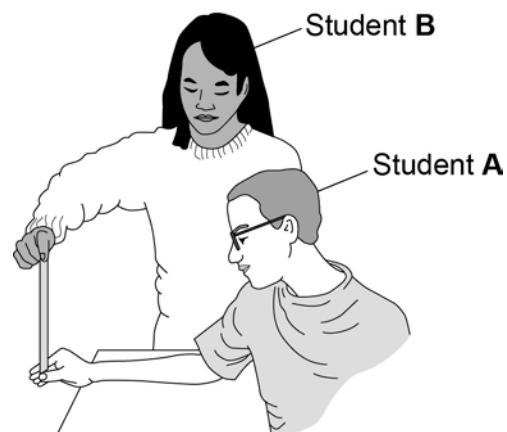
[3 marks]

Question 4 continues on the next page

Two students compare their reactions using a ruler.

This is the method used.

1. Student **A** sits with his elbow on a table top.
2. Student **B** holds the ruler so the bottom of the ruler is level with the top of student **A**'s thumb.
3. Student **B** drops the ruler.
4. Student **A** catches the ruler.
5. Record the drop distance.
6. Repeat steps 1 to 5 four more times.
7. Repeat the whole experiment with student **A** dropping the ruler and student **B** catching it.



Both students are right-handed.

Student **A** uses his right hand to catch the ruler.

Student **B** uses her left hand to catch the ruler.

Table 2 shows the students' results.

Table 2

Student	Drop distance in mm				
	Test 1	Test 2	Test 3	Test 4	Test 5
Student A – right hand	203	167	140	156	163
Student B – left hand	230	211	279	215	264

0 4 . **3** What is the range of student **A**'s results?

[1 mark]

0 4 . **4** The students are testing the hypothesis:

The drop distance of the ruler is smaller when a right-handed person uses their right hand to catch the ruler.

The students' results in **Table 2** are not a good test of the hypothesis.

Suggest what the students should have done to test the hypothesis.

[3 marks]

0 4 . 5 Student **A**'s mean reaction time was 0.19 s.

Mean reaction time can be calculated using the equation:

$$\text{Mean reaction time} = \sqrt{\frac{2 \times \text{mean drop distance in m}}{9.8 \text{ m/s}^2}}$$

Calculate the mean reaction time for Student **B**.

Give your answer to two significant figures.

Student **B**'s results are repeated here to help you answer the question.

	Drop distance in mm				
	Test 1	Test 2	Test 3	Test 4	Test 5
Student B – left hand	230	211	279	215	264

[4 marks]

Mean reaction time = _____ s

Turn over for the next question

0	5
---	---

Humans can use different methods to produce animals and plants with desired characteristics.

Figure 5 shows some different breeds of horse.

Figure 5

Image of different breeds of horse not reproduced here due to third party copyright restrictions.

0	5
---	---

.

1

All breeds of horse are of the same species.

Suggest what you could do to show this.

[2 marks]

0 5 . **2** Horse racing is an ancient sport.

Selective breeding has been used for centuries to produce racehorses.

Describe the steps involved in selective breeding to produce a racehorse.

[3 marks]

Question 5 continues on the next page

Another way of producing organisms with desired characteristics is genetic engineering.

Bt cotton is a variety of cotton that has been genetically engineered to produce a poison.

The poison kills several different species of insect that feed on cotton plants.

The poison is naturally produced by a soil bacterium called *Bacillus thuringiensis*.

0 5 . **3**

Describe how cotton plants can be genetically engineered to produce the Bt poison.

[3 marks]

0 5 . **4**

Describe the advantages and disadvantages of growing Bt cotton.

[4 marks]

Turn over for the next question

0	6
---	---

Huntington's disease is an inherited disorder that affects the nervous system.

It is caused by a dominant allele.

A man is heterozygous for Huntington's disease.

His partner is healthy and does not have the allele that causes Huntington's disease.

0	6
---	---

.	1
---	---

What are the genotypes of the man and the woman?

Use:

- **H** for the allele that causes Huntington's disease
- **h** for the healthy allele.

[1 mark]

Man's genotype

Woman's genotype

0 6 . **2** The couple want to have a child.

Use a Punnett square to determine the probability of the child having Huntington's disease.

Circle the genotypes of any children that will have Huntington's disease.

[4 marks]

Probability of child having Huntington's disease = _____

Question 6 continues on the next page

0 6 . **3** The couple visit a genetic counsellor, who gives them the following options.

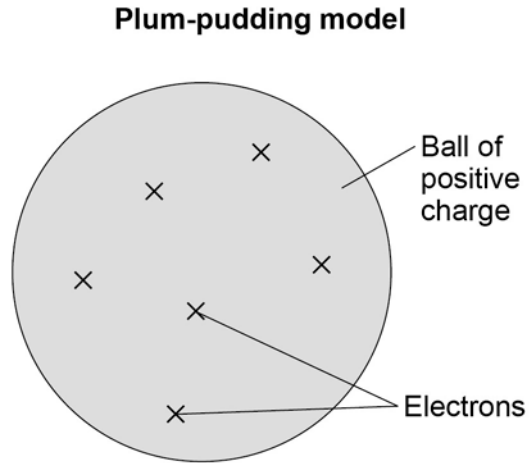
1. Adopt a child.
2. Gamete donation – uses sperm from another man to fertilise the woman’s eggs by in vitro fertilisation (IVF).
3. Conceive naturally.
4. Use pre-implantation genetic diagnosis (PGD).
 - Many embryos are produced by IVF using gametes from the man and woman.
 - Embryos are tested for Huntington’s disease and a healthy embryo is implanted into the woman’s uterus.
 - The risk of implanting an embryo with the allele for Huntington’s disease is 0.2%.
 - Costs the NHS about £11 000.
5. Conceive naturally and use prenatal diagnosis (PND) once the woman becomes pregnant.
 - A sample of the placenta is taken at 10 weeks of pregnancy or a sample of fluid is taken from around the developing baby at 16 weeks of pregnancy.
 - The sample is tested for the Huntington’s allele.
 - A 0.5–1.0% risk of miscarriage.
 - About 1% of samples collected are unsuitable for testing.
 - Costs the NHS about £600.

0 7

Figure 6 shows the plum pudding model of the atom.

This model was used by some scientists after the discovery of electrons in 1897.

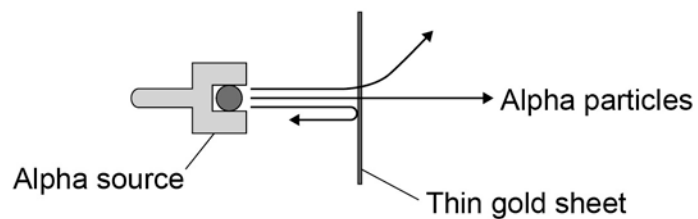
Figure 6



In 1911 the scientists Geiger and Marsden investigated the effect of firing alpha particles at very thin sheets of gold foil.

Their experiment is shown in **Figure 7**. The arrows show the paths taken by alpha particles in the experiment.

Figure 7



-
- 0 7** . **1** Explain why scientists replaced the plum pudding model of the atom with the nuclear model of the atom as a result of the experiment.

[4 marks]

- 0 7** . **2** According to modern measurements:

- the radius of an atom is about $1 \times 10^{-10}\text{m}$
- the radius of an atomic nucleus is about $1 \times 10^{-14}\text{m}$

Show that these values fit with the nuclear model of the atom.

[2 marks]

Question 7 continues on the next page

0 7 . 3 In 1931 a scientist discovered that there are hydrogen atoms with mass number 2 as well as hydrogen atoms with mass number 1.

A year later, another scientist discovered neutrons.

Explain why the discovery of neutrons could explain the presence of hydrogen atoms with different mass numbers.

[3 marks]

0 7 . 4 How would the results of the experiment shown in **Figure 7** change if neutrons were used instead of alpha particles to bombard a thin sheet of gold?

[2 marks]

0 8

A student investigated the effect of light intensity on the rate of photosynthesis in pondweed.

0 8 . 1

The formula for glucose is $C_6H_{12}O_6$

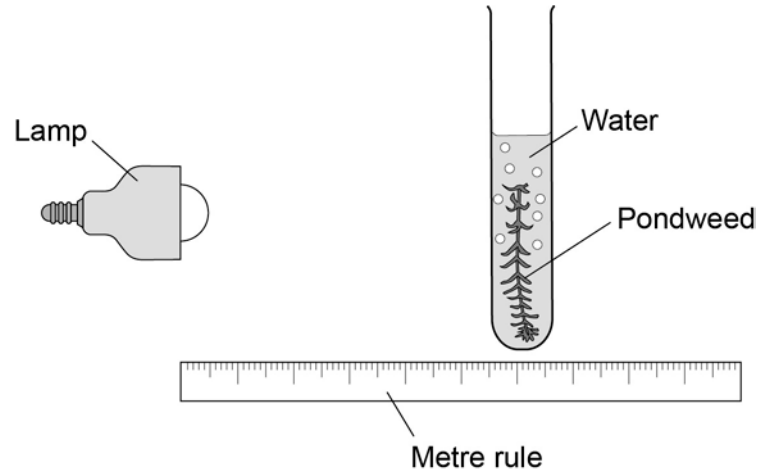
Use the formula for glucose to write the balanced symbol equation for photosynthesis.

[2 marks]

Question 8 continues on the next page

Figure 8 shows the apparatus the student used.

Figure 8



The student altered the distance of the lamp from the pondweed and counted the number of bubbles produced in 30 seconds for each distance.

Table 5 shows the student's results.

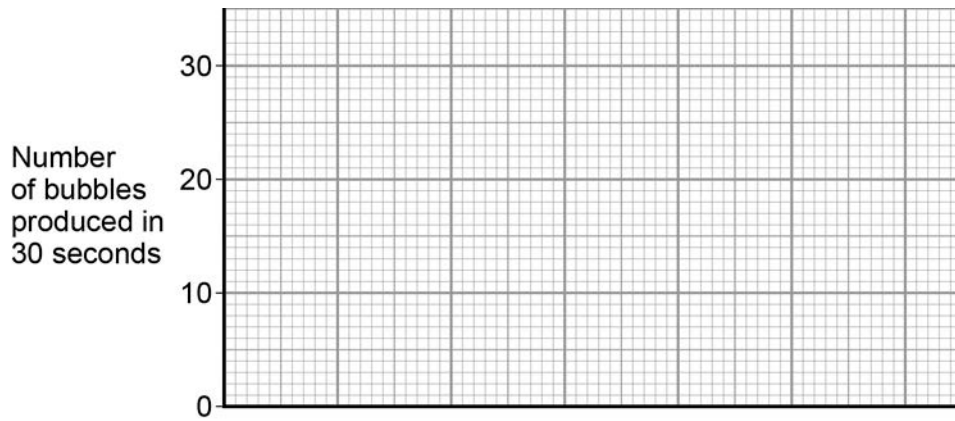
Table 5

Distance in cm	Number of bubbles produced in 30 seconds
10	27
20	23
30	16
40	7
50	2

0 8 . **2** Use the data in **Table 5** to complete the graph on **Figure 19**.

[3 marks]

Figure 9



0 8 . **3** The student concluded that the rate of photosynthesis is inversely proportional to the distance of the lamp from the pondweed.

Does the student's data support this conclusion?

Use data from **Figure 9** to justify your answer.

[3 marks]

Question 8 continues on the next page

0 8 . **4** The volume of one bubble can be calculated using the equation:

$$V = \frac{4}{3} \pi r^3$$

The radius of one bubble is 0.1 cm.

The value for π is 3.14

Use data from **Table 5** and the information above to calculate the rate of gas production at a distance of 40 cm.

Give your answer in standard form to three significant figures.

[5 marks]

Rate of reaction = _____ cm³ per minute

There are no questions printed on this page

Copyright information

Permission to reproduce all copyright material has been applied for. In some cases, efforts to contact copyright-holders may have been unsuccessful and AQA will be happy to rectify any omissions of acknowledgements in future papers if notified. If you have any queries please contact the Copyright Team, AQA, Stag Hill House, Guildford, GU2 7XJ.

Copyright © 2016 AQA and its licensors. All rights reserved.

Figure 5: © GlobalP/iStock.com