

| | | |
|-------------|---------------|------------------|
| Surname | Centre Number | Candidate Number |
| Other Names | | 0 |



GCSE

4291/01



S16-4291-01

HOME ECONOMICS: CHILD DEVELOPMENT
UNIT 1: Principles of Child Development

P.M. MONDAY, 13 June 2016

1 hour 30 minutes

| For Examiner's use only | | |
|-------------------------|--------------|--------------|
| Question | Maximum Mark | Mark Awarded |
| 1. | 6 | |
| 2. | 3 | |
| 3. | 6 | |
| 4. | 7 | |
| 5. | 9 | |
| 6. | 13 | |
| 7. | 10 | |
| 8. | 8 | |
| 9. | 8 | |
| 10. | 10 | |
| Total | 80 | |

INSTRUCTIONS TO CANDIDATES

Use black ink or black ball-point pen. Do not use pencil or gel pen. Do not use correction fluid.

Write your name, centre number and candidate number in the spaces at the top of this page.

Answer **all** questions.

Write your answers in the spaces provided in this booklet.

If you run out of space, use the continuation pages at the back of the booklet, taking care to number the question(s) correctly.

INFORMATION FOR CANDIDATES

The maximum mark for this paper is 80.

The number of marks is given in brackets at the end of each question or part-question.

You are reminded that assessment will take into account the quality of written communication used in your answers that involve extended writing.

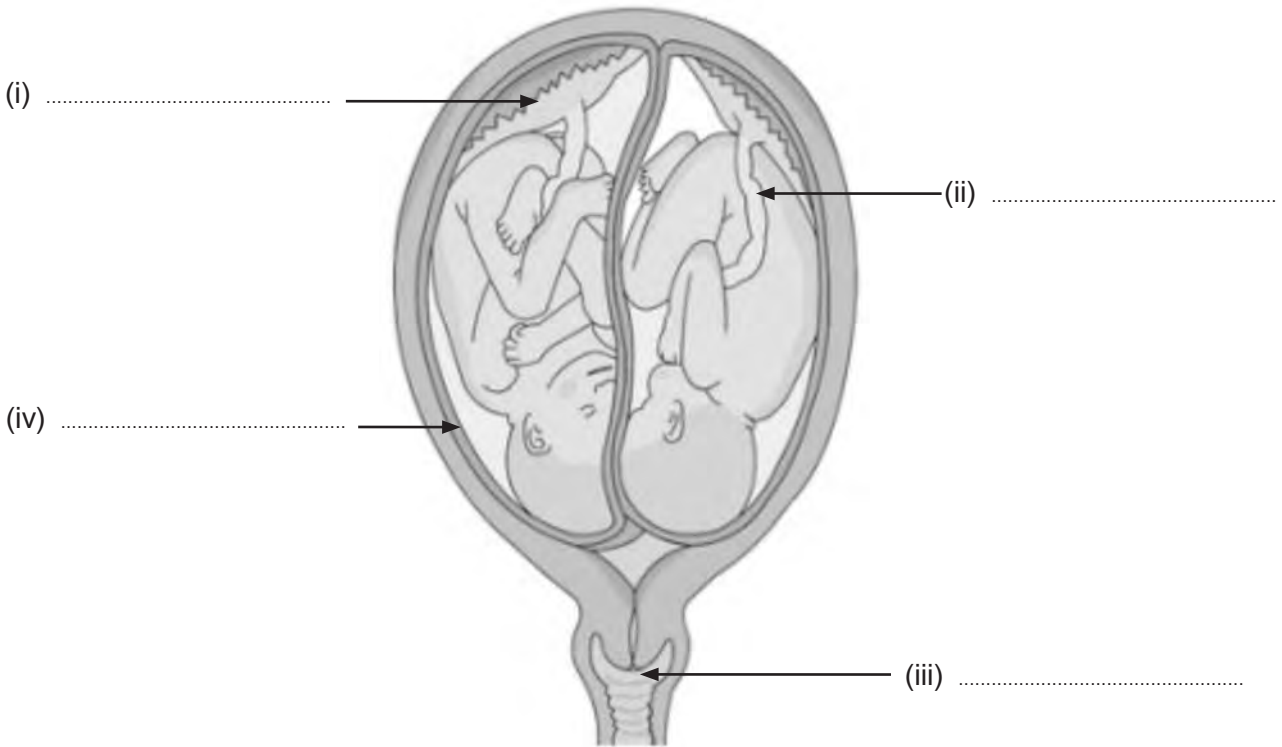


JUN1642910101

Answer all questions.

1. (a) Use the words in the box to label the diagram of the twin fetuses. [4]

| | | | |
|---------------|---------------------|-----------------|-----------------------|
| Cervix | Amniotic sac | Placenta | Umbilical cord |
|---------------|---------------------|-----------------|-----------------------|



- (b) State whether the twins in the diagram are identical or non-identical. Give a reason for your answer. [2]

Answer:

Reason:

.....



2. **Underline** the correct words to complete the following sentences. [3]

- (a) Contraception means **starting a pregnancy/taking action to prevent a pregnancy**.
- (b) Sterilisation for a man is called a **mastectomy/vasectomy**.
- (c) The fluid that surrounds the baby in the uterus is called **cerebral fluid/amniotic fluid**.

3. (a) Complete the following sentences using words from the box. [3]

| | |
|---------------------------|--------------------------------------|
| Menstruation | Sexually transmitted diseases |
| Natural childbirth | Menopause |

- (i) methods do not use any pain killing drugs.
- (ii) can cause damage to the unborn baby.
- (iii) usually begins at about 13 years.

(b) Complete the following sentences. [3]

- (i) Low sugar drinks are best for babies because
-
- (ii) Protein is particularly important in childhood because
-
- (iii) Children need vitamin C because
-

4291 010003



4. (a) State **two** early signs of pregnancy. [2]

(i)

.....

(ii)

.....

(b) Give **two** reasons why the placenta is important for the development of the foetus. [2]

(i)

.....

(ii)

.....

(c) Identify **three** items of important information that can be obtained from an ultrasound scan during pregnancy. [3]

(i)

.....

(ii)

.....

(iii)

.....



5. (a) Name **three** common infectious diseases which children may catch. [3]

(i)

(ii)

(iii)

(b) Identify **two** signs that a child may be feeling unwell. [2]

(i)

.....

(ii)

.....

(c) A 4-year-old child has to be admitted to hospital for an operation. Describe ways a parent may prepare a child for a stay in hospital. [4]

.....

.....

.....

.....

.....

.....

.....

.....

.....

.....

.....

.....

.....

.....

.....

.....

.....

.....

.....

.....

.....

.....

.....

.....



6. (a) Tick (✓) the box next to **each** statement to show if it is **true** or **false**. [3]

| Characteristic | True | False |
|---|------|-------|
| (i) Most babies can sit up without support by the time they are 2 months old. | | |
| (ii) Most babies can walk by themselves by the age of 18 months. | | |
| (iii) At 18 months most young children can use a drinking cup. | | |

(b) Explain what is meant by: [4]

(i) Gross motor skills.

.....

.....

.....

.....

.....

.....

.....

.....

.....

.....

(ii) Fine manipulative skills.

.....

.....

.....

.....

.....

.....

.....

.....

.....

.....



(c) Look at the picture of a climbing frame.



Explain how playing on this equipment can encourage a child’s physical development.

[6]

A series of horizontal dotted lines for writing an answer.

4291
01007



7. Children can live in different types of families.

(a) State **two** reasons why some children live in a one parent family. [2]

(i)

.....

(ii)

.....

(b) Describe how the voluntary organisation Gingerbread helps support one parent families. [2]

.....

.....

.....

.....

.....

.....

(c) Discuss the benefits of having an extended family. [6]

.....

.....

.....

.....

.....

.....

.....

.....

.....

.....

.....

.....



Examiner
only

.....

.....

.....

.....

.....

.....

.....

.....

.....

.....

.....

.....

.....

.....

.....

.....



8. (a) Explain what is meant by emotional development. [2]

.....

.....

(b) Discuss how parents/carers can help the emotional development of a young child. [6]

.....

.....

.....

.....

.....

.....

.....

.....

.....

.....

.....

.....

.....

.....

.....

.....

.....

.....

.....

.....

.....

.....

.....

.....



Examiner
only

A large rectangular area with a solid top and bottom border and a dotted line for a baseline, intended for writing.



Area with horizontal dotted lines for writing.

END OF PAPER



