



**GCSE**

**4291/01**

**HOME ECONOMICS: CHILD DEVELOPMENT**

**UNIT 1: Principles of Child Development**

**P.M. MONDAY, 13 June 2016**

**1 hour 30 minutes plus your additional time allowance**

**Surname** \_\_\_\_\_

**Other Names** \_\_\_\_\_

**Centre Number** \_\_\_\_\_

**Candidate Number** 0 \_\_\_\_\_

<b>For Examiner's use only</b>		
<b>Question</b>	<b>Maximum Mark</b>	<b>Mark Awarded</b>
<b>1.</b>	<b>6</b>	
<b>2.</b>	<b>3</b>	
<b>3.</b>	<b>6</b>	
<b>4.</b>	<b>7</b>	
<b>5.</b>	<b>9</b>	
<b>6.</b>	<b>13</b>	
<b>7.</b>	<b>10</b>	
<b>8.</b>	<b>8</b>	
<b>9.</b>	<b>8</b>	
<b>10.</b>	<b>10</b>	
<b>Total</b>	<b>80</b>	

## **INSTRUCTIONS TO CANDIDATES**

**Use black ink, black ball-point pen or your usual method.**

**Write your name, centre number and candidate number in the spaces provided on the front cover.**

**Answer ALL questions.**

**Write your answers in the spaces provided in this booklet.**

**If you run out of space, use the continuation pages at the back of the booklet, taking care to number the question(s) correctly.**

## **INFORMATION FOR CANDIDATES**

**The maximum mark for this paper is 80.**

**The number of marks is given in brackets at the end of each question or part-question.**

**You are reminded that assessment will take into account the quality of written communication used in your answers that involve extended writing.**

Answer ALL questions.

1(a) Use the words in the box to label the diagram of the twin foetuses opposite. [4]

<b>CERVIX</b>	<b>AMNIOTIC SAC</b>
<b>PLACENTA</b>	<b>UMBILICAL CORD</b>

1(b) State whether the twins in the diagram are identical or non-identical.  
Give a reason for your answer. [2]

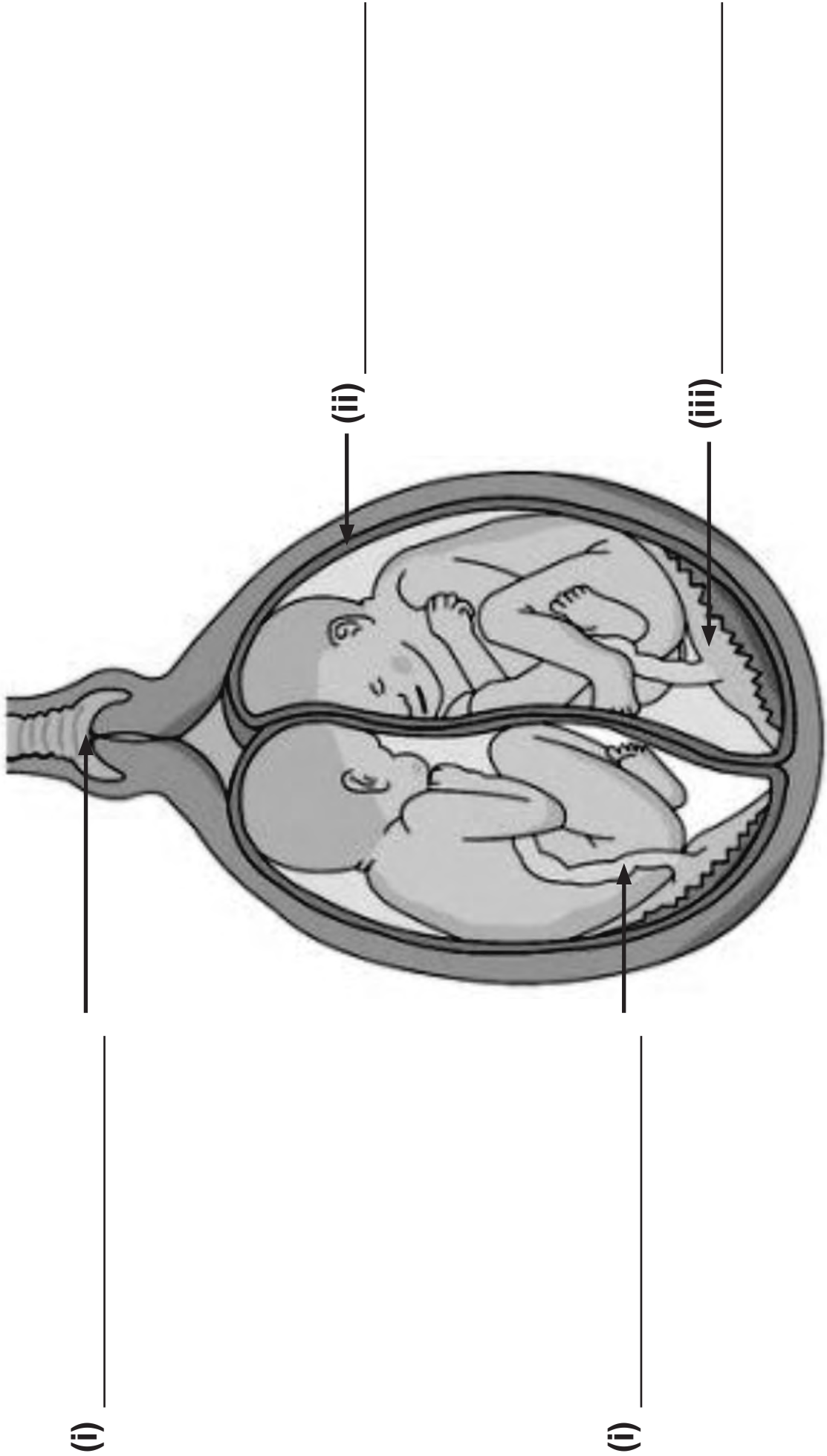
Answer: \_\_\_\_\_

Reason: \_\_\_\_\_

---

---

---



2. **UNDERLINE** the correct words to complete the following sentences. [3]

(a) Contraception means **starting a pregnancy/ taking action to prevent a pregnancy.**

(b) Sterilisation for a man is called a **mastectomy/ vasectomy.**

(c) The fluid that surrounds the baby in the uterus is called **cerebral fluid/amniotic fluid.**

3(a) Complete the following sentences using words from the box. [3]

<b>MENSTRUATION</b>	<b>SEXUALLY TRANSMITTED DISEASES</b>
<b>NATURAL CHILDBIRTH</b>	<b>MENOPAUSE</b>

(i) \_\_\_\_\_ methods do not use any pain killing drugs.

(ii) \_\_\_\_\_ can cause damage to the unborn baby.

(iii) \_\_\_\_\_ usually begins at about 13 years.

**3(b) Complete the following sentences. [3]**

**(i) Low sugar drinks are best for babies**

**because \_\_\_\_\_**

---

---

---

**(ii) Protein is particularly important in**

**childhood because \_\_\_\_\_**

---

---

---

**(iii) Children need vitamin C because**

---

---

---

---



**4(a) State TWO early signs of pregnancy. [2]**

**(i)**

---

---

---

---

**(ii)**

---

---

---

---

**4(b) Give TWO reasons why the placenta is important for the development of the foetus. [2]**

**(i)** \_\_\_\_\_

---

---

---

**(ii)** \_\_\_\_\_

---

---

---

**4(c) Identify THREE items of important information that can be obtained from an ultrasound scan during pregnancy. [3]**

**(i)** \_\_\_\_\_

---

---

---

**(ii)** \_\_\_\_\_

---

---

---

**(iii)** \_\_\_\_\_

---

---

---

**5(a) Name THREE common infectious diseases which children may catch. [3]**

(i) \_\_\_\_\_

(ii) \_\_\_\_\_

(iii) \_\_\_\_\_

**(b) Identify TWO signs that a child may be feeling unwell. [2]**

(i) \_\_\_\_\_

\_\_\_\_\_

\_\_\_\_\_

\_\_\_\_\_

(ii) \_\_\_\_\_

\_\_\_\_\_

\_\_\_\_\_

\_\_\_\_\_





**6(a) TICK (✓) the box next to EACH statement to show if it is TRUE or FALSE. [3]**

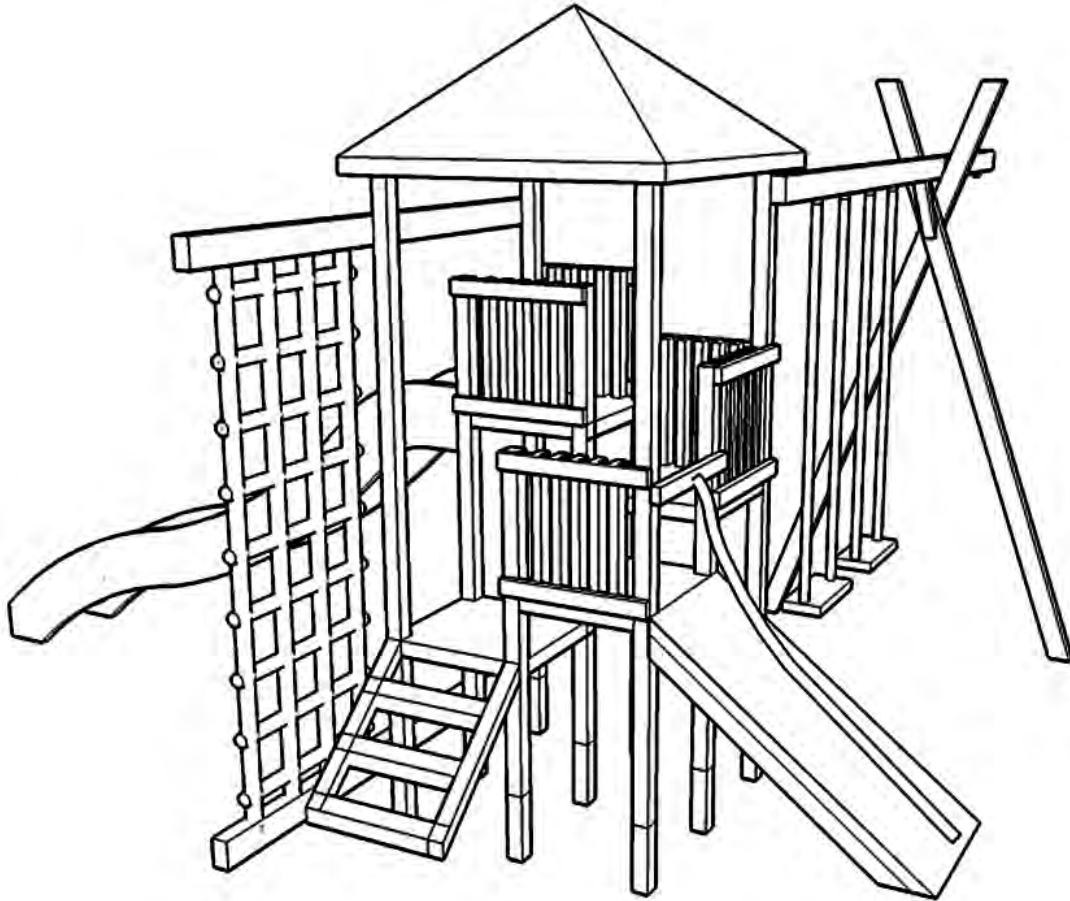
<b>CHARACTERISTIC</b>	<b>TRUE</b>	<b>FALSE</b>
<b>(i) Most babies can sit up without support by the time they are 2 months old.</b>		
<b>(ii) Most babies can walk by themselves by the age of 18 months.</b>		
<b>(iii) At 18 months most young children can use a drinking cup.</b>		







6(c) Look at the picture of a climbing frame.



Explain how playing on this equipment can encourage a child's physical development. [6]

---

---

---

---

---

---

---





**7. Children can live in different types of families.**

**(a) State TWO reasons why some children live in a one parent family. [2]**

**(i)** \_\_\_\_\_

---

---

---

**(ii)** \_\_\_\_\_

---

---

---











**8(a) Explain what is meant by emotional development.**

**[2]**

---

---

---

---

**(b) Discuss how parents/carers can help the emotional development of a young child. [6]**

---

---

---

---

---

---

---

---

---

---

---

---























---

---

---

---

---

---

---

---

---

---

---

---

---

---

---

---

---

---

---

---

---

---

---

---

---

---

**END OF PAPER**









