



General Certificate of Secondary Education
2016

Centre Number

--	--	--	--	--

Candidate Number

--	--	--	--	--

Home Economics (Child Development)

Unit 1: Parenthood,
Pregnancy and Childbirth



[GHC11]

GHC11

WEDNESDAY 1 JUNE, AFTERNOON

TIME

1 hour.

INSTRUCTIONS TO CANDIDATES

Write your Centre Number and Candidate Number in the spaces provided at the top of this page.

You must answer the questions in the spaces provided.

Do not write outside the boxed area on each page or on blank pages.

Complete in blue or black ink only. **Do not write with a gel pen.**

Answer **all six** questions.

INFORMATION FOR CANDIDATES

The total mark for this paper is 60.

Figures in brackets printed down the right-hand side of pages indicate the marks awarded to each question or part question.

Quality of written communication will be assessed in Questions **5** and **6**.



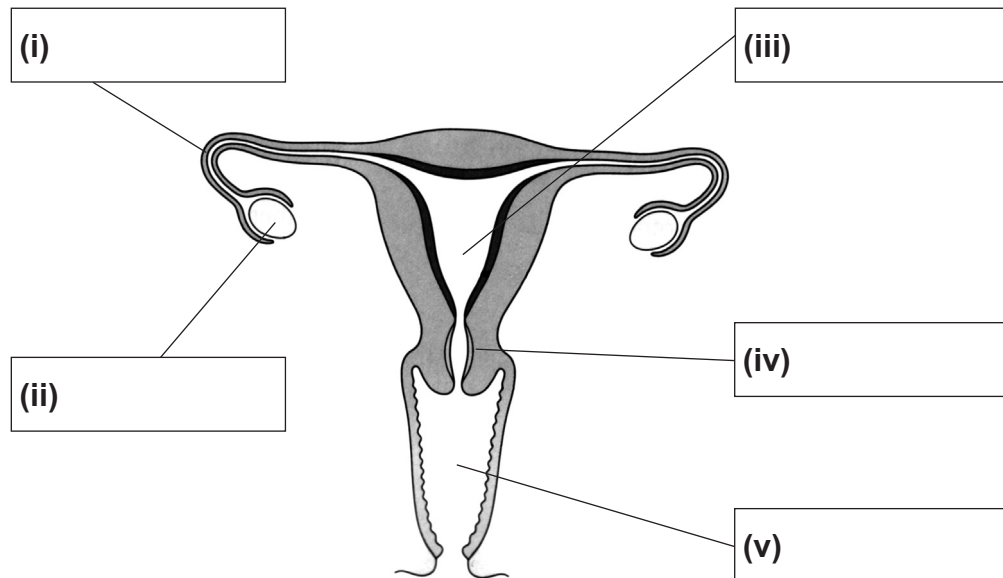
Answer **all six** questions.

1 (a) Write down **two** possible symptoms of pregnancy.

1. _____
2. _____ [2]

(b) Label the diagram of the female reproductive system using the correct words from the box.

fallopian tube cervix vagina uterus ovary



[5]

Source: CCEA

(c) Write down **one** function of the:

(i) cervix

_____ [1]

(ii) uterus

_____ [1]



2 (a) Write down **two** possible reasons why a child may be fostered.

1. _____

2. _____ [2]

(b) Write down **two** possible causes of infertility.

1. _____

2. _____ [2]

(c) Explain the benefits of a young couple planning for a family.

1. _____

2. _____

3. _____

[6]

(d) Explain the following:

a miscarriage

_____ [2]

[Turn over



3 (a) Describe what happens during Stage 3 of labour.

[2]

(b) Explain the following methods of pain relief.

(i) An epidural

[2]

(ii) TENS

[2]



(c) What is:

(i) a caesarean?

[3]

(ii) induction?

[3]



4 (a) List **three** areas the APGAR test scores when assessing a newborn baby.

1. _____
2. _____
3. _____ [3]

(b) Explain **three** ways a pregnant woman can help prevent food poisoning when preparing and cooking her meals.

1. _____

2. _____

3. _____
_____ [6]





BLANK PAGE

DO NOT WRITE ON THIS PAGE

(Questions continue overleaf)

[Turn over





Lined writing area with horizontal lines for text entry.

[9]

[Turn over



DO NOT WRITE ON THIS PAGE

For Examiner's use only	
Question Number	Marks
1	
2	
3	
4	
5	
6	

Total Marks	
--------------------	--

Examiner Number

Permission to reproduce all copyright material has been applied for.
In some cases, efforts to contact copyright holders may have been unsuccessful and CCEA will be happy to rectify any omissions of acknowledgement in future if notified.

10118/7



12GHC1112