

Tuesday 12 June 2012 – Morning

**GCSE TWENTY FIRST CENTURY SCIENCE
BIOLOGY A**

A223/01 Unit 3: Ideas in Context plus B7 (Foundation Tier)

INSERT



INSTRUCTION TO EXAMS OFFICER/INVIGILATOR

- Do not send this Insert for marking; it should be retained in the centre or destroyed.

INSTRUCTIONS TO CANDIDATES

- This Insert contains the article required to answer question 1.

INFORMATION FOR CANDIDATES

- This document consists of 4 pages. Any blank pages are indicated.

Alien Invaders

Foreign species of plants and animals are being found in Europe.

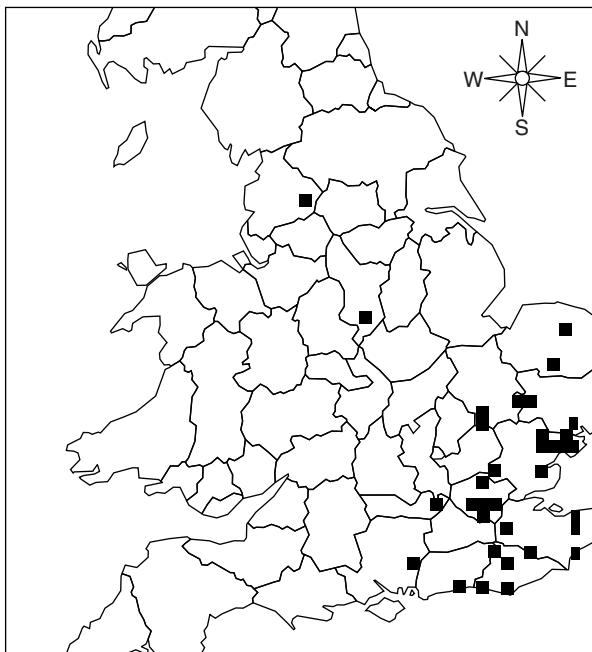
These are invasive species. They have been introduced either deliberately or by accident into an environment where they are not normally found. One such example is the ruddy duck. The ruddy duck is just one of many alien species that have been introduced into Europe that are threatening biodiversity.



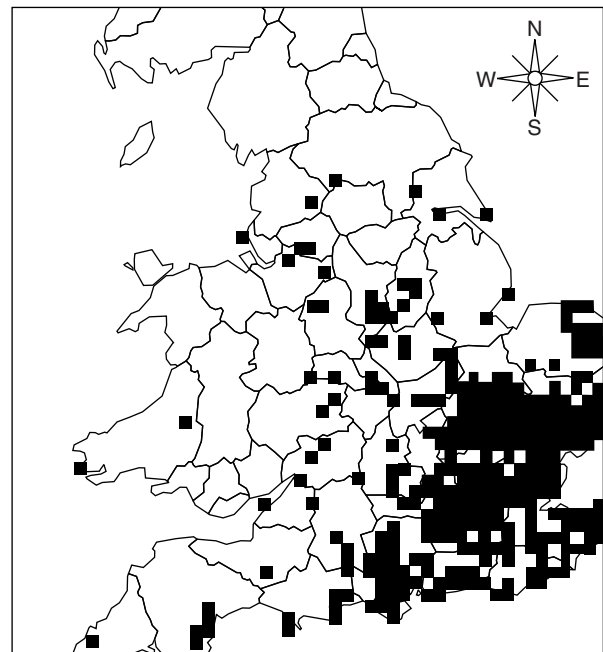
Thirty years ago, 600 alien invasive species were identified in Europe. The number of invasive species has increased by 75% since then. The overall effect of this has been to reduce biodiversity.

Some species have been introduced intentionally. The ruddy duck was introduced into Europe as an ornamental species. It is now one of the worst invaders. This is because it has a very aggressive courting behaviour and it interbreeds with endangered native duck species.

Another invader is the harlequin ladybird. It entered the UK in the summer of 2004 and rapidly spread across the country. Because it is bigger and more aggressive than the native ladybirds, it soon began to replace them.

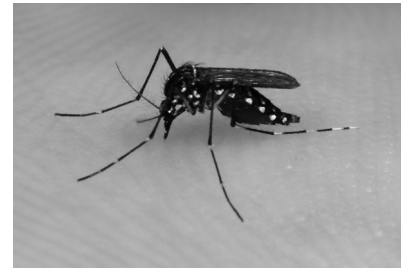


reports of harlequin ladybirds in 2004



reports of harlequin ladybirds in 2006

It is not just biodiversity that is being affected. Human health is also at risk. The Asian tiger mosquito carries a virus which causes illness in humans. It was originally native to South East Asia but in the last twenty years it has invaded many countries throughout the world. Scientists think that this is because of increasing international travel and transport of goods around the world. This mosquito has now invaded Europe. It can cause a severe illness in humans consisting of fever and painful joints. The symptoms can last for many years.



It has been estimated that invasive species cause more than £12 billion worth of damage in Europe every year. Scientists are demanding Europe-wide legislation to protect native species from these alien invaders.

Scientists are considering using biological control to reduce the numbers of these alien invaders. Japanese knotweed is an invader that is now growing across the UK. It replaces native plant species and can even grow through concrete. In Japan the plant is common but does not grow out of control like it does in the UK. Scientists are releasing an insect from Japan that feeds on Japanese knotweed. The insect does not eat any other plants and only feeds on knotweed. It is hoped that the insect will reduce the spread of this alien invader across the UK.



**Copyright Information**

OCR is committed to seeking permission to reproduce all third-party content that it uses in its assessment materials. OCR has attempted to identify and contact all copyright holders whose work is used in this paper. To avoid the issue of disclosure of answer-related information to candidates, all copyright acknowledgements are reproduced in the OCR Copyright Acknowledgements Booklet. This is produced for each series of examinations and is freely available to download from our public website (www.ocr.org.uk) after the live examination series.

If OCR has unwittingly failed to correctly acknowledge or clear any third-party content in this assessment material, OCR will be happy to correct its mistake at the earliest possible opportunity.

For queries or further information please contact the Copyright Team, First Floor, 9 Hills Road, Cambridge CB2 1GE.

OCR is part of the Cambridge Assessment Group; Cambridge Assessment is the brand name of University of Cambridge Local Examinations Syndicate (UCLES), which is itself a department of the University of Cambridge.