

Centre Number						Candidate Number				
Surname										
Other Names										
Candidate Signature										

For Examiner's Use	
Examiner's Initials	
Page	Mark
2/3	
4/5	
6/7	
8/9	
10/11	
12	
TOTAL	



General Certificate of Secondary Education  
Foundation Tier  
June 2013

# Bengali

46351F

## Unit 1 Listening

**F**

Wednesday 15 May 2013 9.00 am to 9.35 am  
approximately (including reading time)

You will need no other materials.

### Time allowed

- 30 minutes approximately + 5 minutes reading time before the test
- The pauses are pre-recorded for this test.

### Instructions

- Use black ink or black ball-point pen.
- Fill in the boxes at the top of this page.
- Do not open this book until you are told to do so.

This is what you should do for each item.

- After the question number is announced, there will be a pause to allow you to read the instructions and questions.
- Listen carefully to the recording and read the questions again.
- Listen to the recording again and then answer the questions.
- When the next question is about to start you will hear a bleep like this (\*).
- You may write at any time during the test.
- Answer **all** questions in **English**.
- You must answer the questions in the spaces provided. Do not write outside the box around each page or on blank pages.
- Write neatly and put down **all** the information you are asked to give.
- Ask any questions now. **You must not ask questions or interrupt during the test.**
- You now have five minutes to read through the question paper. You may make notes during this time. You may open your answer book now.
- **The test starts now.**

### Information

- The marks for questions are shown in brackets.
- The maximum mark for this paper is 35.
- You must **not** use a dictionary.



J U N 1 3 4 6 3 5 1 F 0 1

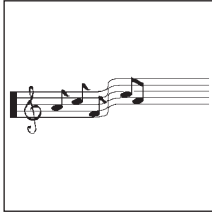
H/Jun13/46351F

46351F

Answer **all** questions in **English** in the spaces provided.

### Internet shopping

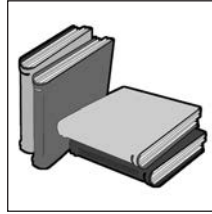
A



B



C



D



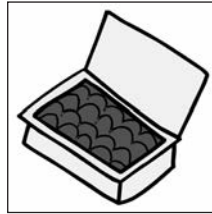
E



F



G



What do these people buy on the internet?

Write the correct letter in the boxes.

Example:

**G**

1

(1 mark)

2

(1 mark)

3

(1 mark)

4

(1 mark)



**Friends**

What do these young people say about their friends?

**Example:** My friend's hair is .....black.....

**5** My friend is ..... (1 mark)

**6** My friend can speak ..... (1 mark)

**7** My friend likes ..... (1 mark)

**8** My friend has a red ..... (1 mark)

**Turn over for the next question**

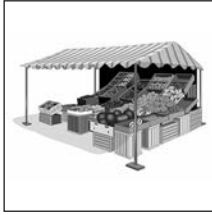
<b>8</b>

**Turn over ►**

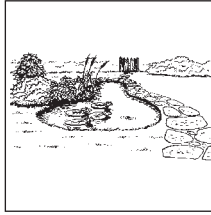


## Local area

A



B



C



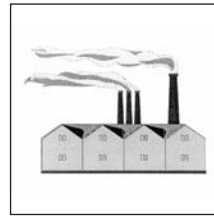
D



E



F



Which places do these people mention?

Write the correct letter in the boxes.

9

(1 mark)

10

(1 mark)

11

(1 mark)

12

(1 mark)



**Weekly activities****13**On which day of the week does Anil **not** go out?

Write the correct letter in the box.

**A****B****C****Wednesday****Friday****Sunday***(1 mark)***Turn over for the next question**

**Holiday activities**

What will these pupils do on holiday? Write the correct letter in the boxes.

<b>A</b>	Sailing
<b>B</b>	Horse riding
<b>C</b>	Fishing
<b>D</b>	Kite flying
<b>E</b>	Climbing
<b>F</b>	Swimming
<b>G</b>	Diving

**Example:**

Salma	<b>A</b>
-------	----------

14

Anil	
------	--

*(1 mark)*

15

Laila	
-------	--

*(1 mark)*

16

Faruk	
-------	--

*(1 mark)*

17

Aleya	
-------	--

*(1 mark)*

Turn over for the next question

DO NOT WRITE ON THIS PAGE  
ANSWER IN THE SPACES PROVIDED

4

Turn over ►



**School**

Manjoor is talking about his school in a village in Sylhet, Bangladesh.

Choose the correct answer and write the letter in the boxes.

**Example:** Manjoor's journey to school takes ...

<b>A</b>	25 minutes
<b>B</b>	45 minutes
<b>C</b>	50 minutes

<b>C</b>
----------

**18** He walks to school ...

<b>A</b>	on a muddy path.
<b>B</b>	through a rice field.
<b>C</b>	along the main road.

--

(1 mark)

**19** At lunchtime, he eats ...

<b>A</b>	rice and fish.
<b>B</b>	bananas and biscuits.
<b>C</b>	chapatis with sugar.

--

(1 mark)





20

At school, he enjoys ...

<b>A</b>	Maths
<b>B</b>	English
<b>C</b>	Bengali

(1 mark)

21

He finishes school at ...

<b>A</b>	2.30 pm
<b>B</b>	3.30 pm
<b>C</b>	4.00 pm

(1 mark)

**Turn over for the next question**


<b>4</b>

**Turn over ►**


**Transport**

According to these people, what are the advantages and disadvantages of each mode of transport?

Example:


	Advantage	Disadvantage
	<p>Good for travelling short distances.</p>	<p>Sometimes you have to wait for a long time.</p>

22

	Advantage	Disadvantage
		

(2 marks)

23

	Advantage	Disadvantage
		

(2 marks)



**Young people**



What **issues** are these young people talking about? What is their **attitude** to each issue?

<b>A</b>	own space to live
<b>B</b>	television
<b>C</b>	pocket money

<b>D</b>	homework
<b>E</b>	parents
<b>F</b>	friends

Write **P** for a positive attitude.  
Write **N** for a negative attitude.  
Write **P/N** for a positive and a negative attitude.

Example:

Issue	Attitude
<b>B</b>	<b>N</b>

24

Issue	Attitude

(2 marks)

25

Issue	Attitude

(2 marks)

26

Issue	Attitude

(2 marks)

Turn over for the next question

Turn over ►



**Media**

<b>A</b>	news headlines
<b>B</b>	new magazine
<b>C</b>	football commentary
<b>D</b>	weather forecast
<b>E</b>	cookery programme
<b>F</b>	celebrity interview

What are these radio programmes about? Write the correct letter in the boxes.

27

*(1 mark)*

28

*(1 mark)*

29

*(1 mark)*

30

*(1 mark)***END OF QUESTIONS**

ACKNOWLEDGEMENT OF COPYRIGHT-HOLDERS AND PUBLISHERS

Page 11: photograph, © Thinkstock.

Copyright © 2013 AQA and its licensors. All rights reserved.

4
---

