

Candidate Forename		Candidate Surname	
--------------------	--	-------------------	--

Centre Number						Candidate Number				
---------------	--	--	--	--	--	------------------	--	--	--	--

**OXFORD CAMBRIDGE AND RSA EXAMINATIONS
GENERAL CERTIFICATE OF SECONDARY EDUCATION**

B624/02

**GATEWAY SCIENCE
ADDITIONAL SCIENCE B**

Unit 2 Modules B4 C4 P4 (Higher Tier)

WEDNESDAY 9 JUNE 2010: Afternoon

DURATION: 1 hour

SUITABLE FOR VISUALLY IMPAIRED CANDIDATES

**Candidates answer on the Question Paper
A calculator may be used for this paper**

OCR SUPPLIED MATERIALS:

None

OTHER MATERIALS REQUIRED:

Pencil

Ruler (cm/mm)

READ INSTRUCTIONS OVERLEAF

INSTRUCTIONS TO CANDIDATES

- Write your name clearly in capital letters, your Centre Number and Candidate Number in the boxes on the first page.
- Use black ink. Pencil may be used for graphs and diagrams only.
- Read each question carefully and make sure that you know what you have to do before starting your answer.
- Answer ALL the questions.
- Write your answer to each question in the space provided. Additional paper may be used if necessary but you must clearly show your Candidate Number, Centre Number and question number(s).

INFORMATION FOR CANDIDATES

- The number of marks is given in brackets [] at the end of each question or part question.
- A list of physics equations is printed on page three.
- The Periodic Table is printed on the back page.
- The total number of marks for this paper is 60.

EQUATIONS

$$\text{speed} = \frac{\text{distance}}{\text{time taken}}$$

$$\text{acceleration} = \frac{\text{change in speed}}{\text{time taken}}$$

$$\text{force} = \text{mass} \times \text{acceleration}$$

$$\text{work done} = \text{force} \times \text{distance}$$

$$\text{power} = \frac{\text{work done}}{\text{time}}$$

$$\text{kinetic energy} = \frac{1}{2} mv^2$$

$$\text{potential energy} = mgh$$

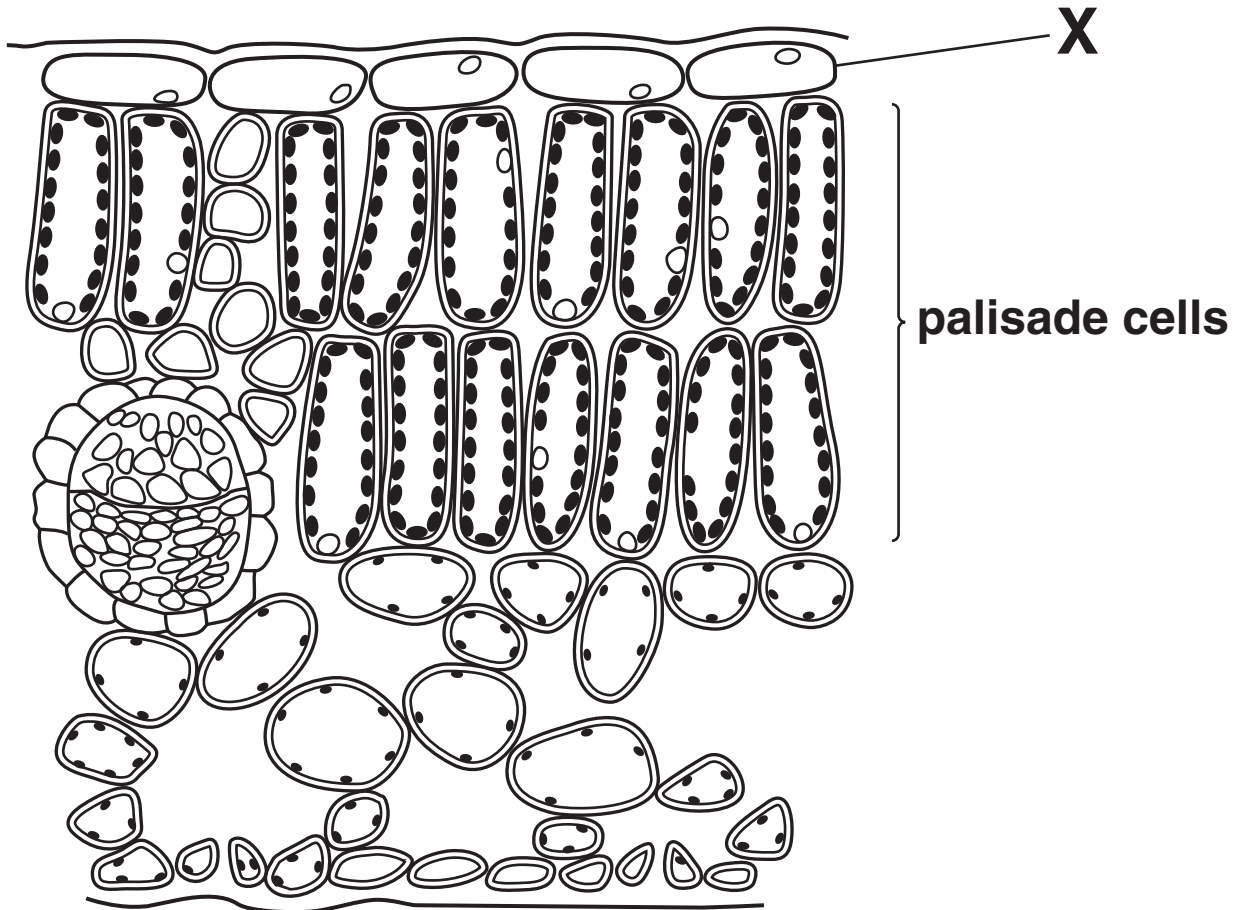
$$\text{weight} = \text{mass} \times \text{gravitational field strength}$$

$$\text{resistance} = \frac{\text{voltage}}{\text{current}}$$

Answer ALL the questions.

SECTION A – MODULE B4

1 Look at the diagram of a section through a leaf.



(a) What is the name of part **X**?

Put a ring around the correct answer.

cuticle guard cells lower epidermis

stomata upper epidermis

[1]

(b) Palisade cells are labelled on the diagram.

Palisade cells are more efficient at photosynthesis than other leaf cells.

Write down TWO reasons why they are more efficient.

1 _____

2 _____

_____ **[2]**

(c) (i) Water moves through vessels in the leaf during transpiration.

Write down the name of the vessels that transport water in transpiration.

Choose from the list.

cuticle

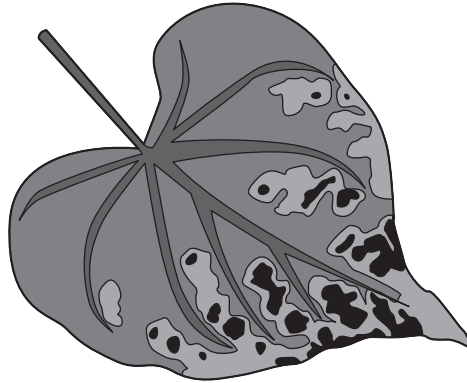
mesophyll

phloem

xylem

_____ **[1]**

(ii) Look at the leaf in the picture.



This leaf has yellow patches and does not photosynthesise well.

Magnesium is missing from the soil.

What substance in plants contains magnesium?

_____ [1]

(iii) Magnesium is usually taken up by plant root hairs from low concentrations in the soil.

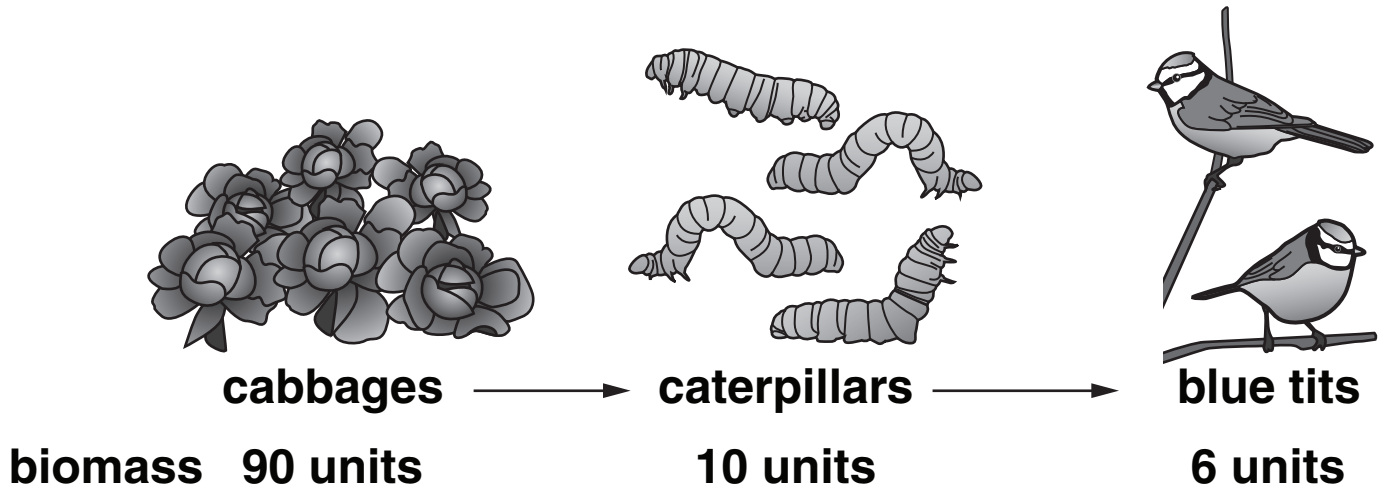
Explain how plants can do this.

_____ [2]

[Total: 7]

2 (a) Look at the food chain.

It shows the biomass at each stage.

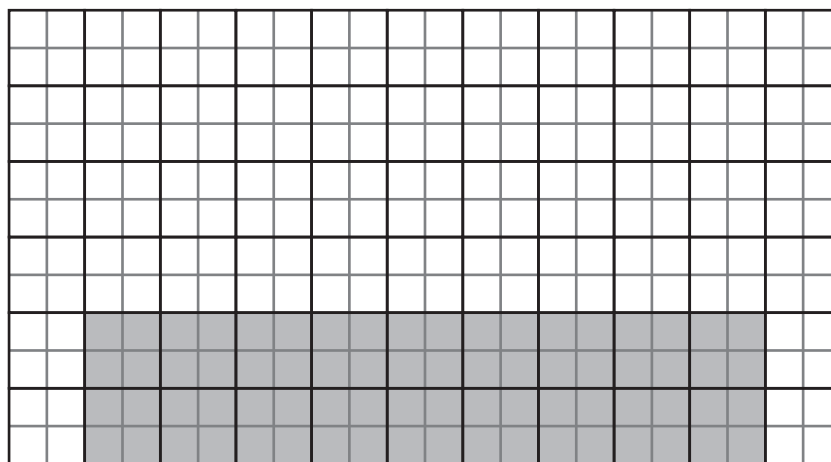


A pyramid of biomass can be drawn to describe this food chain.

Finish the pyramid of biomass to include the caterpillars and the blue tits.

Make sure the bars are drawn to scale and **LABELLED**.

The bar for the cabbages has been drawn for you.



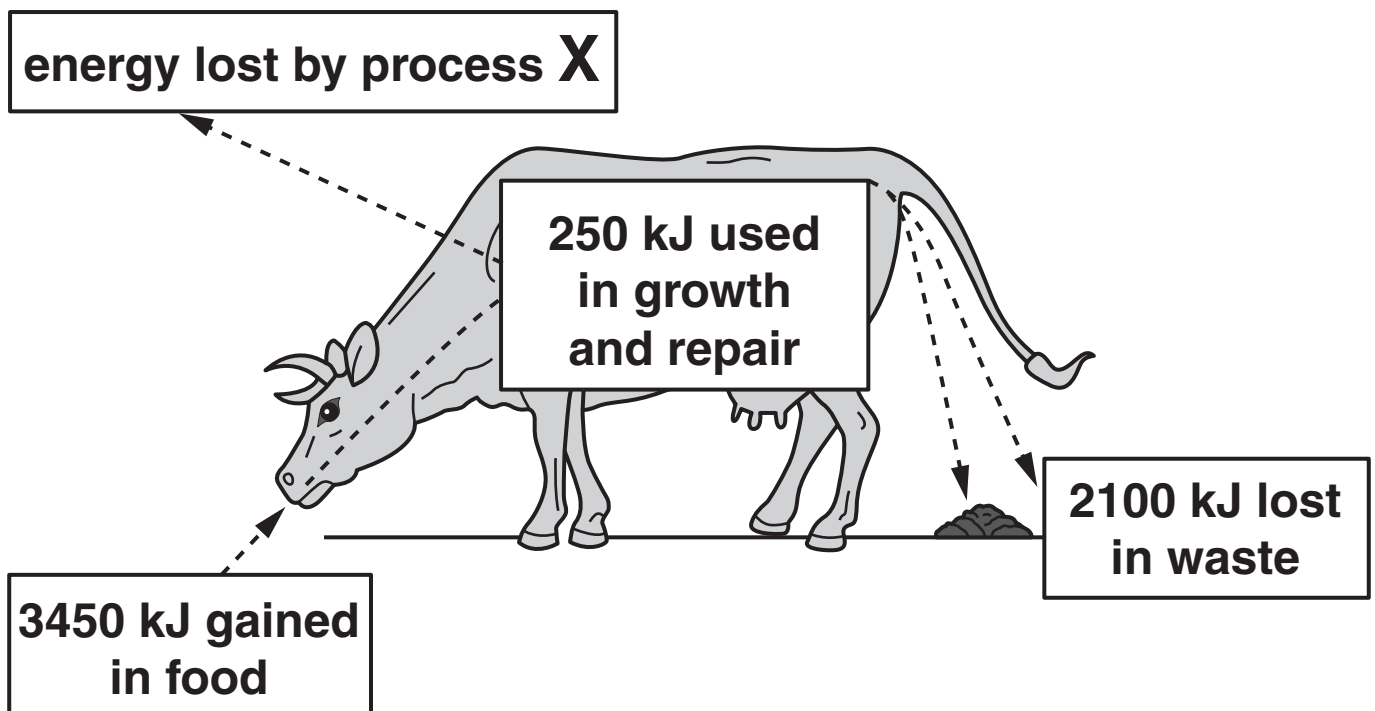
[2]

(b) Farmers grow crops and produce large amounts of biomass.

This biomass is fed to cows.

Look at the diagram.

It shows all the energy transferred to and from a cow.



(i) Look at the diagram.

What is process **X**?

_____ [1]

(ii) Calculate the amount of energy lost by process X.

answer _____ **kJ** [1]

(iii) Some of the energy gained in food is transferred to growth and repair.

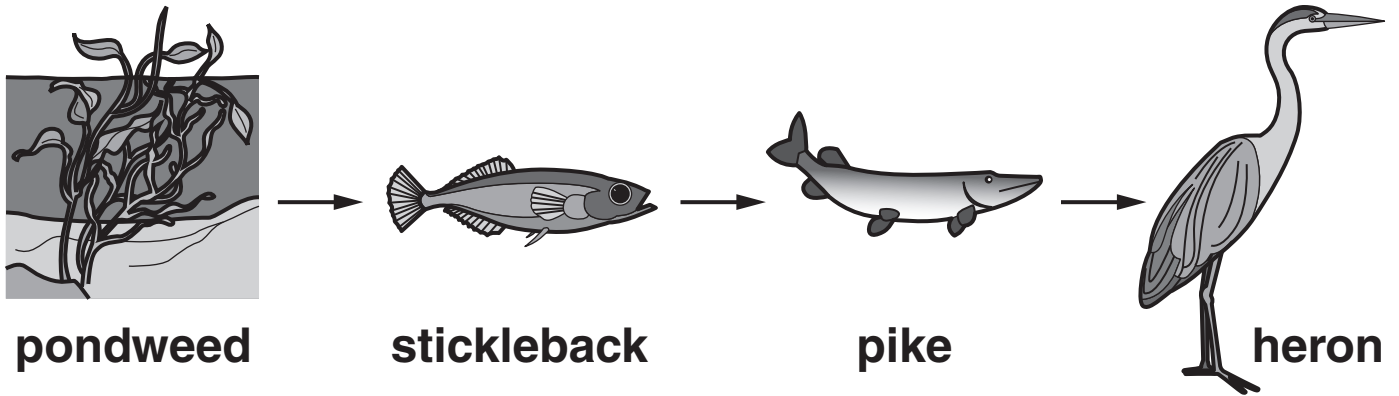
Calculate the EFFICIENCY of this energy transfer.

answer _____ **%** [2]

(c) Some farmers use intensive farming methods to improve the yield of their crops.

Sometimes PESTICIDES are used.

This is a food chain found in rivers.



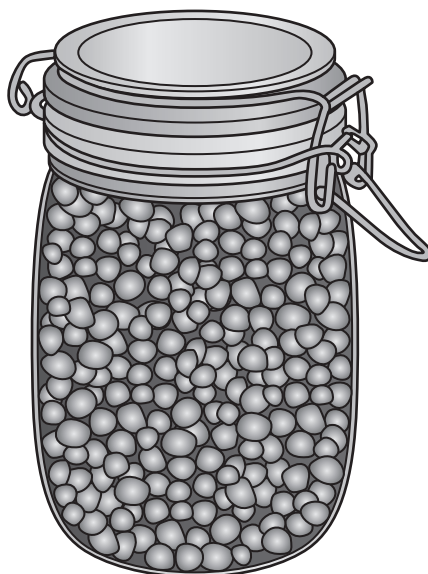
Pesticides sprayed on fields can decrease the number of herons in rivers.

Write about how this happens.

[2]

[Total: 8]

- 3 Peas can be preserved by storing them in a strong salt solution.**



- (a) The peas are soaked in a strong salt solution.**

Look at the statements below.

Which statement describes the way the salt solution helps preserve the peas from decay?

Put a tick (✓) in the correct box.

high temperature kills microorganisms

the solution prevents microorganisms getting oxygen

the solution causes microorganisms to lose water

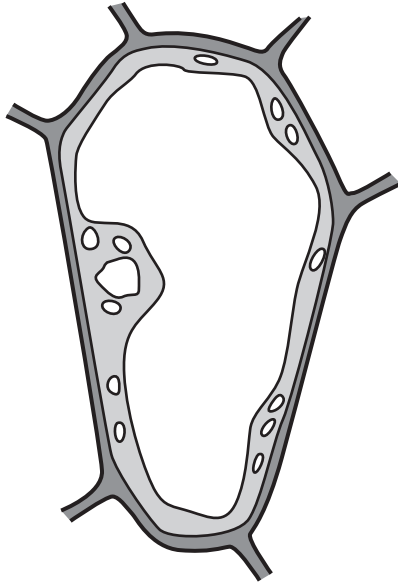
the solution is too acidic for microorganisms

[1]

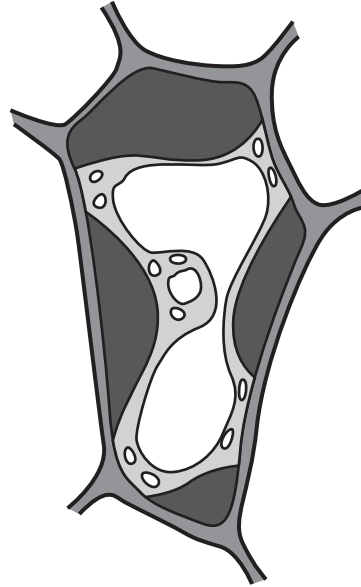
(b) Preserving peas in strong salt solution can affect their texture.

This is because the pea cells change shape.

normal pea cell



pea cell in strong salt solution



(i) Write down the name of the process that causes the cell to change shape in the strong salt solution.

_____ [1]

(ii) Write down the word used to describe the appearance of the cell in the strong salt solution.

_____ [1]

- (c) (i) **TURGOR PRESSURE** provides support for a pea plant.

Explain what is meant by turgor pressure.

[1]

- (ii) **Turgor pressure occurs in plant cells.**

Turgor pressure does NOT occur in animal cells.

Explain why.

[1]

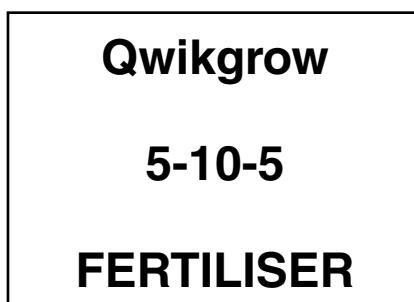
[Total: 5]

SECTION B – MODULE C4

4 Mr Hills is a farmer.

He grows vegetables on his farm.

(a) Mr Hills adds fertilisers to his fields.



Potassium nitrate, **KNO_3** , is a fertiliser.

Calculate the relative formula mass, **M_r** , of potassium nitrate.

The relative atomic mass of K is 39, of N is 14 and of O is 16.

answer _____

[1]

(b) Potassium nitrate is made when potassium hydroxide reacts with an acid.

(i) Write down the name of this acid.

_____ **[1]**

(ii) An acid reacts with a base.

What is the name of this TYPE of reaction?

Choose from:

chromatography

distillation

neutralisation

precipitation

answer _____ **[1]**

(c) One disadvantage of using too much fertiliser is that some of it runs off into rivers and lakes.

This causes EUTROPHICATION.

Write about eutrophication.

Your answer should include

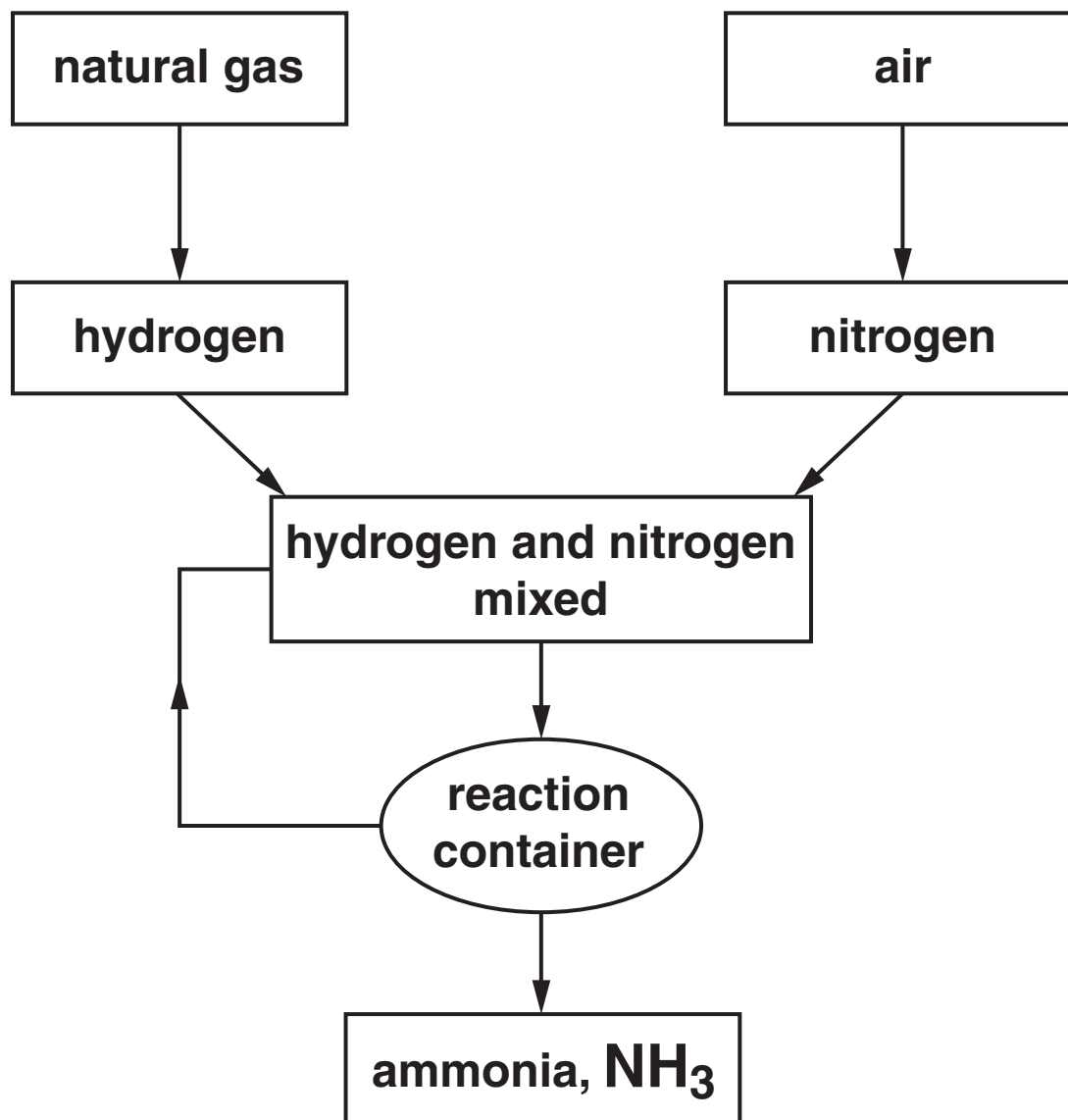
- what happens during eutrophication**
- the effects on living organisms.**

[3]

[Total: 6]

- 5 This question is about the manufacture of ammonia, NH_3 .

Look at the flow chart. It shows the steps in the process.



- (a) In this reaction, nitrogen, N_2 , reacts with hydrogen, H_2 , to make ammonia.

Write a balanced SYMBOL equation for this reaction.

[2]

(b) An iron catalyst is used in this process.

What is the effect of using a catalyst on the rate of reaction and the percentage yield of ammonia?

Effect on rate of reaction

Effect on percentage yield

[1]

(c) Ammonia is a very important chemical.

Explain why.

[1]

(d) Look at the table.

It shows the percentage yield of ammonia at different temperatures and pressures.

pressure in atmospheres	percentage yield at 200 °C	percentage yield at 400 °C	percentage yield at 600 °C
100	80	22	8
200	92	40	14
300	95	56	18
400	96	67	22

(i) How does increasing the TEMPERATURE change the percentage yield?

_____ [1]

(ii) How does increasing the PRESSURE change the percentage yield?

_____ [1]

[Total: 6]

BLANK PAGE

6 This question is about water supplies.

Water purification has three stages.

(a) Complete the table to show the processes and why they are used.

process	why it is used
filtration	<hr/> <hr/>
<hr/>	allows very small solid particles to settle out
chlorination	kills microbes

[2]

(b) One of the pollutants sometimes found in water is lead compounds.

Explain how lead compounds get into water supplies.

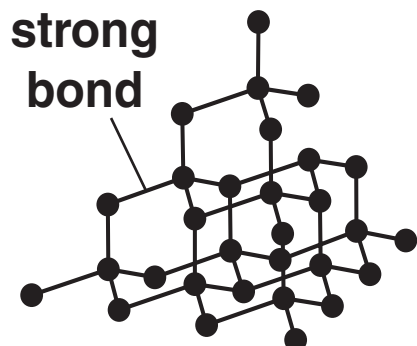
[1]

[Total: 3]

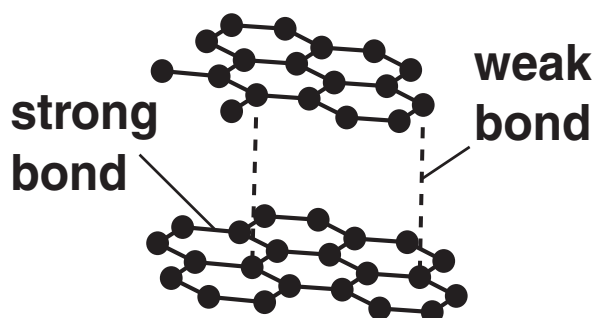
7 Carbon can exist in different solid forms.

● = carbon atom

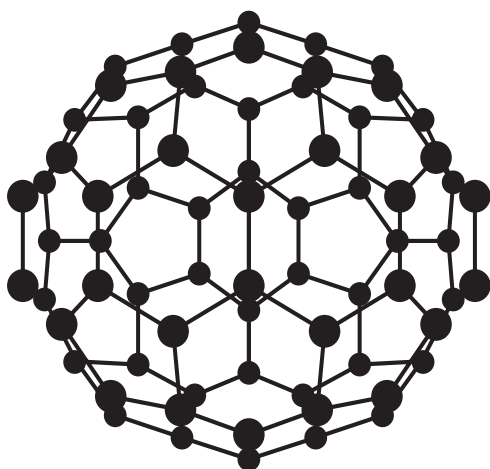
diamond



graphite



buckminster fullerene



(a) What is the name given to different solid forms of the same element?

Choose from:

allotrope

isotope

nanotube

precipitate

answer _____ [1]

(b) Graphite is slippery.

Explain why.

Use ideas about its structure.

The diagram may help you.

[1]

(c) Graphite is a good conductor of electricity.

Explain how graphite conducts electricity.

[1]

(d) Diamond is used to make cutting tools.



Write down TWO reasons why.

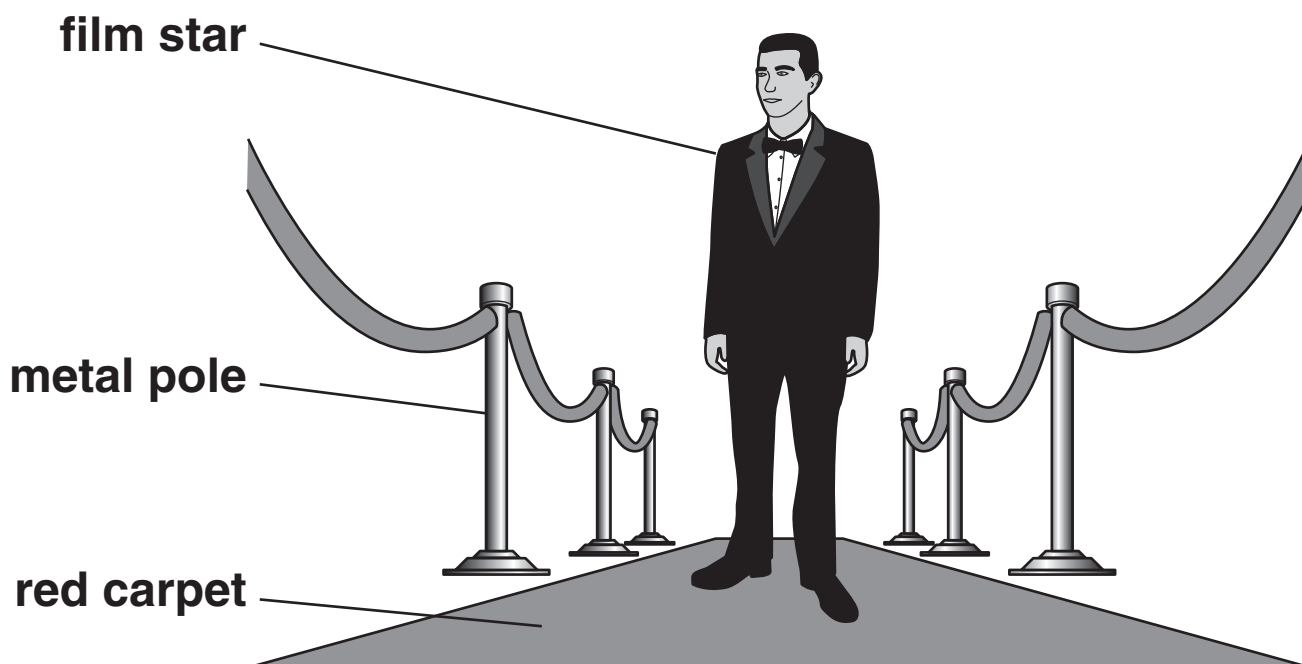
1 _____

2 _____ **[2]**

[Total: 5]

SECTION C – MODULE P4

8 A film star walks down the red carpet.



He becomes charged.

He touches a metal pole.

The charged particles move to earth and he gets an electrostatic shock.

(a) What are these charged particles called?

Choose from:

alpha

beta

electrons

neutrons

protons

[1]

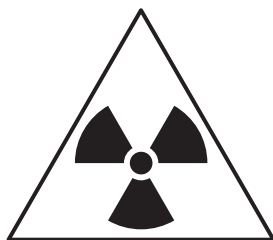
(b) Static electricity can cause shocks.

Write down one other DISADVANTAGE of static electricity.

_____ [1]

[Total: 2]

9 This question is about radioactivity.



(a) The three types of nuclear radiation are ALPHA, BETA and GAMMA.

Complete the table.

type of radiation	speed	description
alpha	slow moving	helium nucleus
beta		
gamma	very fast	electromagnetic wave

[2]

(b) Most elements do NOT contain radioactive atoms.

We can place these elements in a NUCLEAR REACTOR.

They absorb PARTICLES in the reactor.

This makes the atoms radioactive.

(i) What is the name of the particles that are absorbed by the atoms?

_____ [1]

(ii) Alpha radiation comes from the NUCLEUS of a radioactive atom.

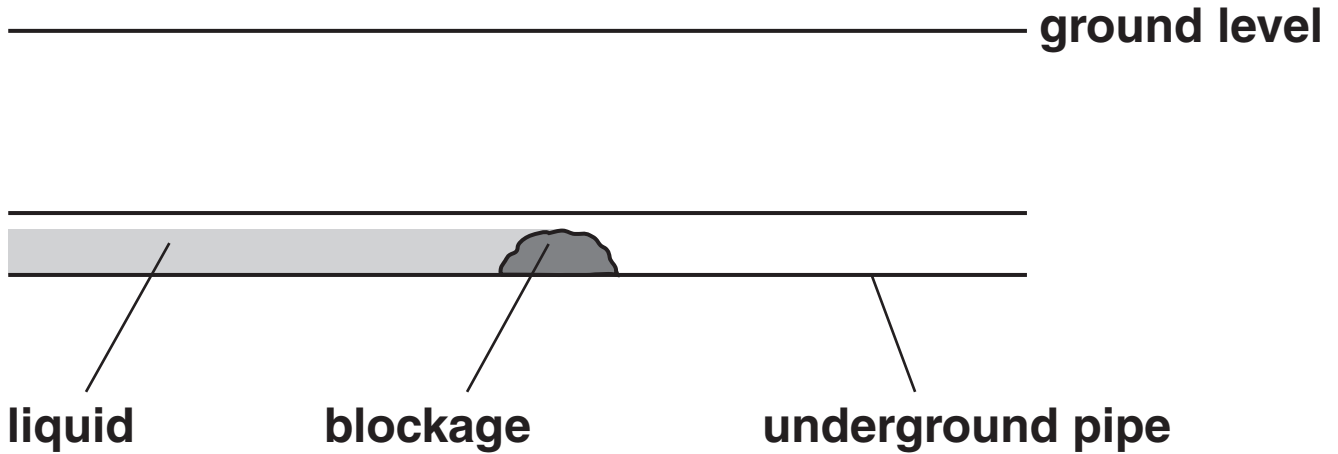
What is special about the nucleus of a RADIOACTIVE atom?

[1]

(c) Some underground pipes carry liquids.

Sometimes they become blocked.

Look at the diagram.



Radioactive tracers can be used to find the blockage in the pipe.

Explain how.

Your answer should include

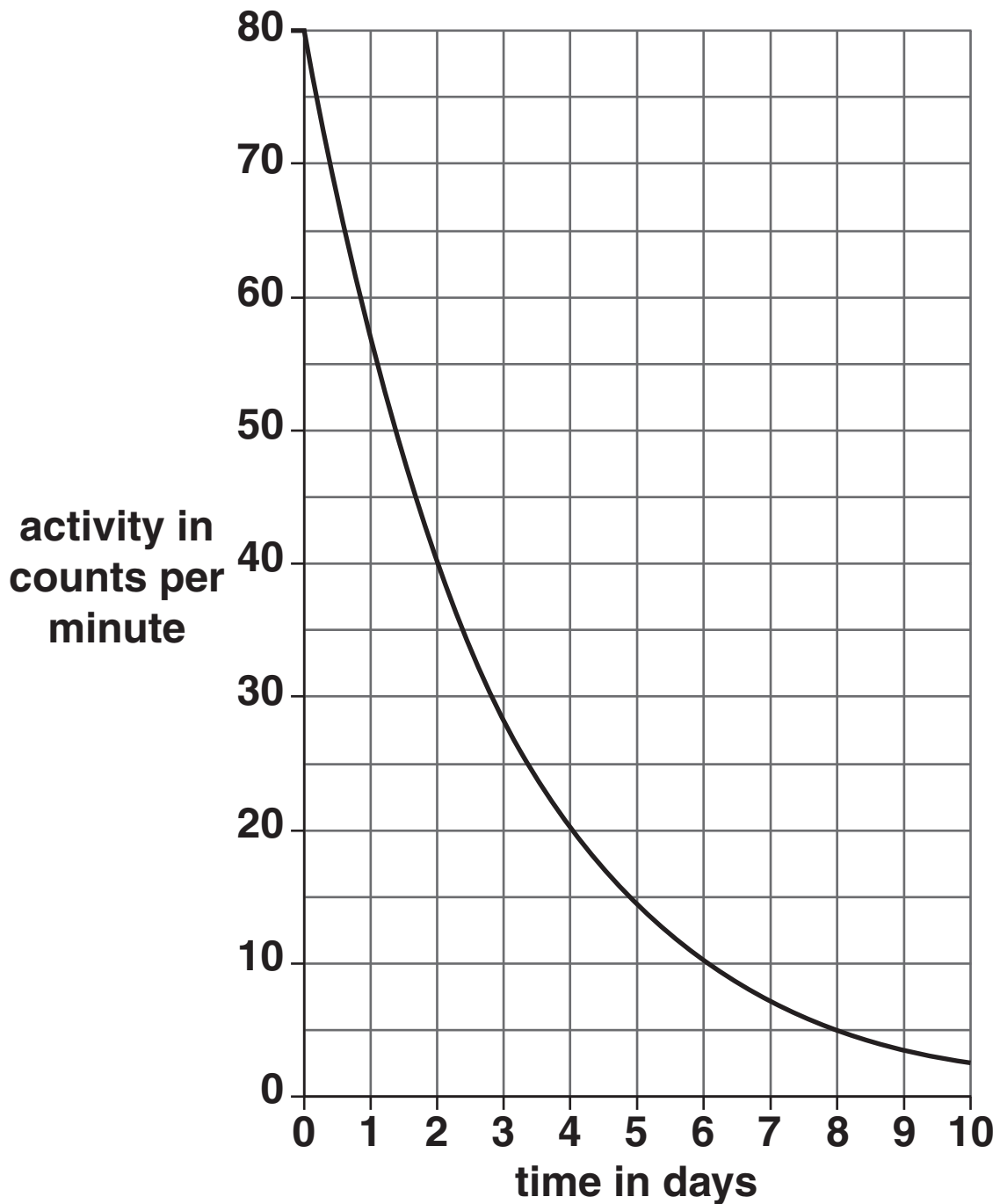
- the TYPE of tracer used
- WHY this tracer is used
- how the radiation is DETECTED
- HOW the blockage is found.

[4]

BLANK PAGE

(d) Radioactive materials become less active with time.

Look at the graph of the activity of radioactive material X.



- (i) Radioactive material **X** has an activity of 80 counts per minute.

Its activity decreases over time.

Look at the decay curve for material **X**.

What is the HALF LIFE of radioactive material **X**?

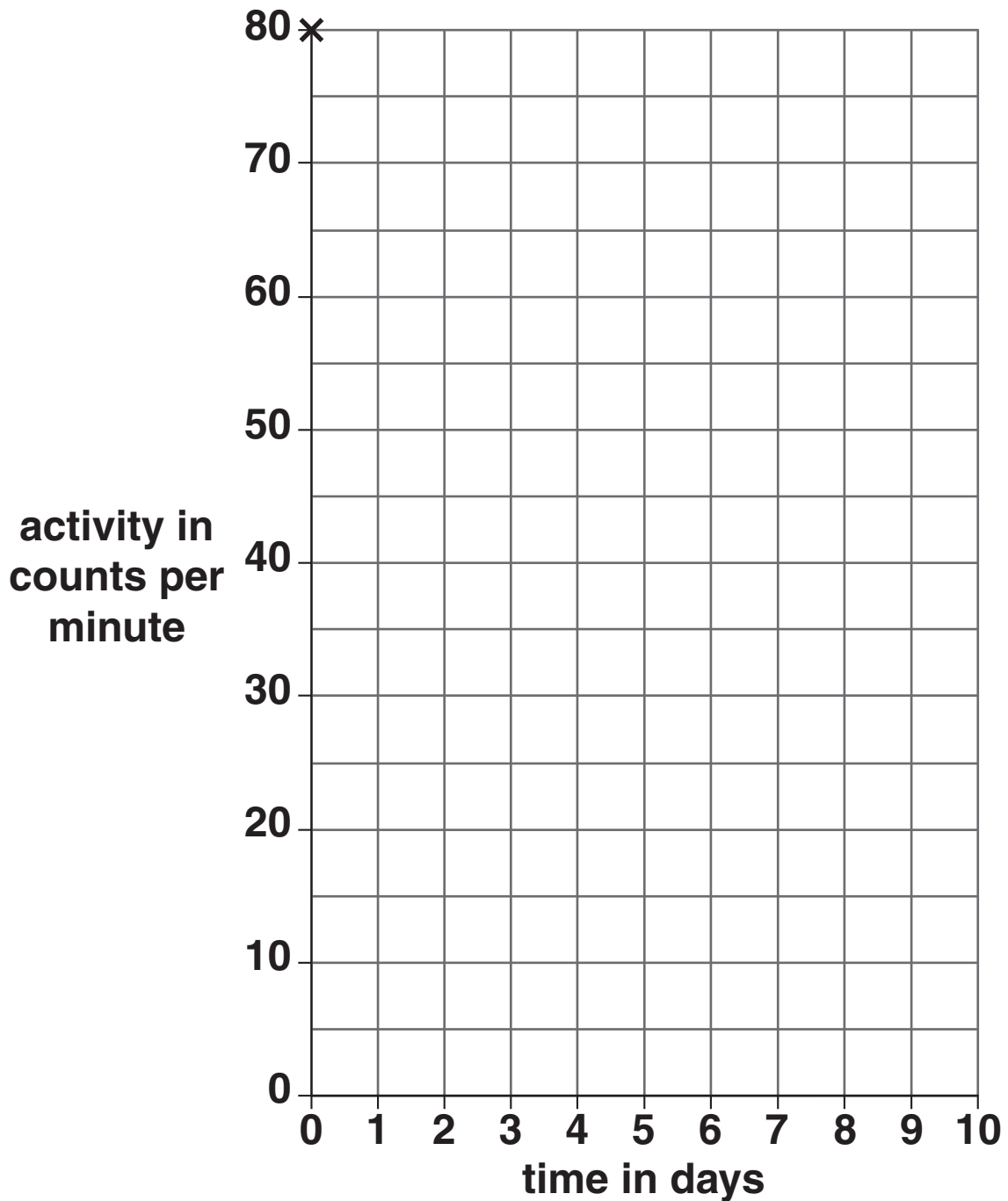
answer _____ days

[1]

- (ii) Material **Y** has a half life of 3 DAYS. It starts with an activity of 80 counts per minute.

Complete the graph.

Draw the decay curve for material **Y** for the first 6 days.

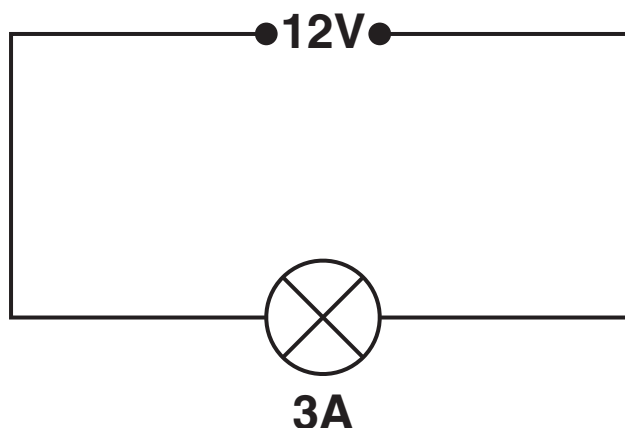


[1]

[Total: 10]

10 Amy builds an electric circuit.

(a) Look at the circuit diagram.



The current in the lamp is 3A.

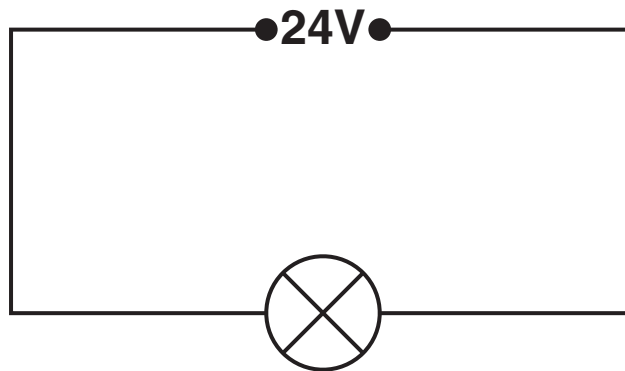
The voltage across the lamp is 12V.

Calculate the RESISTANCE of the lamp.

The equations on page 3 may help you.

answer _____ Ω [2]

(b) Amy INCREASES the voltage across the lamp to 24V.



What happens to the size of the CURRENT in the lamp?

_____ [1]

[Total: 3]

11 **ULTRASOUND** is a longitudinal wave.

(a) Humans **CANNOT** hear ultrasound. Explain why.

[2]

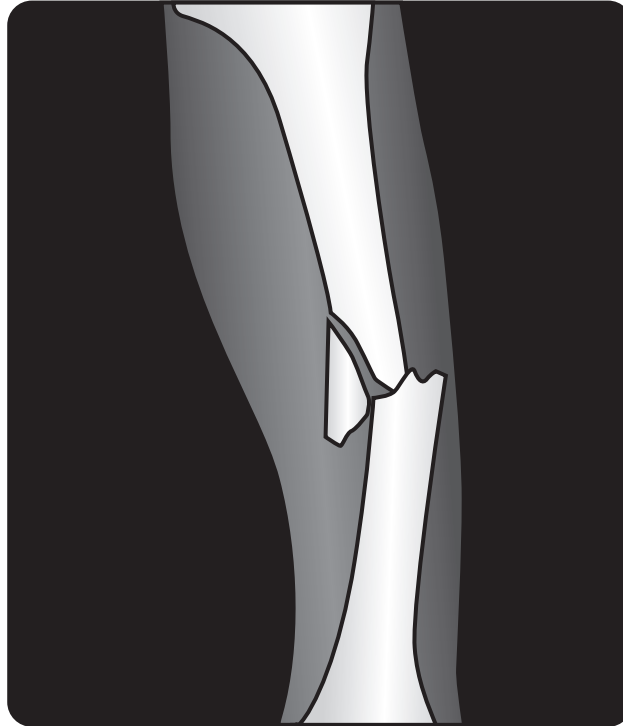
(b) Ultrasound is used in hospitals for scanning.

It can detect the different layers inside the body.

Explain how.

[1]

(c) X-rays are used in hospitals.



X-rays can show broken bones.

It is safer to scan unborn babies with ULTRASOUND.

Suggest why ultrasound is used rather than X-rays.

_____ [1]

(d) How are X-rays made in an X-ray machine?

_____ [1]

[Total: 5]

END OF QUESTION PAPER



Copyright Information

OCR is committed to seeking permission to reproduce all third-party content that it uses in its assessment materials. OCR has attempted to identify and contact all copyright holders whose work is used in this paper. To avoid the issue of disclosure of answer-related information to candidates, all copyright acknowledgements are reproduced in the OCR Copyright Acknowledgements Booklet. This is produced for each series of examinations, is given to all schools that receive assessment material and is freely available to download from our public website (www.ocr.org.uk) after the live examination series.

If OCR has unwittingly failed to correctly acknowledge or clear any third-party content in this assessment material, OCR will be happy to correct its mistake at the earliest possible opportunity.

For queries or further information please contact the Copyright Team, First Floor, 9 Hills Road, Cambridge CB2 1GE.

OCR is part of the Cambridge Assessment Group; Cambridge Assessment is the brand name of University of Cambridge Local Examinations Syndicate (UCLES), which is itself a department of the University of Cambridge.

The Periodic Table of the Elements

		1		2		3		4		5		6		7		0																																																																																																																																																																																																																																																																																																																																																																																																																																																																																																																																																																																																																																																																																																																																																																																																																																																																																																																																																																																																																	
		1 H hydrogen 1														4 He helium 2																																																																																																																																																																																																																																																																																																																																																																																																																																																																																																																																																																																																																																																																																																																																																																																																																																																																																																																																																																																																																	
		Key relative atomic mass atomic symbol name atomic (proton) number																																																																																																																																																																																																																																																																																																																																																																																																																																																																																																																																																																																																																																																																																																																																																																																																																																																																																																																																																																																																																															
1	2	7	9	11	12	13	14	15	16	17	18	19	20	21	22	23	24	25	26	27	28	29	30	31	32	33	34	35	36	37	38	39	40	41	42	43	44	45	46	47	48	49	50	51	52	53	54	55	56	57	58	59	60	61	62	63	64	65	66	67	68	69	70	71	72	73	74	75	76	77	78	79	80	81	82	83	84	85	86	87	88	89	90	91	92	93	94	95	96	97	98	99	100	101	102	103	104	105	106	107	108	109	110	111	112	113	114	115	116	117	118	119	120	121	122	123	124	125	126	127	128	129	130	131	132	133	134	135	136	137	138	139	140	141	142	143	144	145	146	147	148	149	150	151	152	153	154	155	156	157	158	159	160	161	162	163	164	165	166	167	168	169	170	171	172	173	174	175	176	177	178	179	180	181	182	183	184	185	186	187	188	189	190	191	192	193	194	195	196	197	198	199	200	201	202	203	204	205	206	207	208	209	210	211	212	213	214	215	216	217	218	219	220	221	222	223	224	225	226	227	228	229	230	231	232	233	234	235	236	237	238	239	240	241	242	243	244	245	246	247	248	249	250	251	252	253	254	255	256	257	258	259	260	261	262	263	264	265	266	267	268	269	270	271	272	273	274	275	276	277	278	279	280	281	282	283	284	285	286	287	288	289	290	291	292	293	294	295	296	297	298	299	300	301	302	303	304	305	306	307	308	309	310	311	312	313	314	315	316	317	318	319	320	321	322	323	324	325	326	327	328	329	330	331	332	333	334	335	336	337	338	339	340	341	342	343	344	345	346	347	348	349	350	351	352	353	354	355	356	357	358	359	360	361	362	363	364	365	366	367	368	369	370	371	372	373	374	375	376	377	378	379	380	381	382	383	384	385	386	387	388	389	390	391	392	393	394	395	396	397	398	399	400	401	402	403	404	405	406	407	408	409	410	411	412	413	414	415	416	417	418	419	420	421	422	423	424	425	426	427	428	429	430	431	432	433	434	435	436	437	438	439	440	441	442	443	444	445	446	447	448	449	450	451	452	453	454	455	456	457	458	459	460	461	462	463	464	465	466	467	468	469	470	471	472	473	474	475	476	477	478	479	480	481	482	483	484	485	486	487	488	489	490	491	492	493	494	495	496	497	498	499	500	501	502	503	504	505	506	507	508	509	510	511	512	513	514	515	516	517	518	519	520	521	522	523	524	525	526	527	528	529	530	531	532	533	534	535	536	537	538	539	540	541	542	543	544	545	546	547	548	549	550	551	552	553	554	555	556	557	558	559	560	561	562	563	564	565	566	567	568	569	570	571	572	573	574	575	576	577	578	579	580	581	582	583	584	585	586	587	588	589	590	591	592	593	594	595	596	597	598	599	600	601	602	603	604	605	606	607	608	609	610	611	612	613	614	615	616	617	618	619	620	621	622	623	624	625	626	627	628	629	630	631	632	633	634	635	636	637	638	639	640	641	642	643	644	645	646	647	648	649	650	651	652	653	654	655	656	657	658	659	660	661	662	663	664	665	666	667	668	669	670	671	672	673	674	675	676	677	678	679	680	681	682	683	684	685	686	687	688	689	690	691	692	693	694	695	696	697	698	699	700	701	702	703	704	705	706	707	708	709	710	711	712	713	714	715	716	717	718	719	720	721	722	723	724	725	726	727	728	729	730	731	732	733	734	735	736	737	738	739	740	741	742	743	744	745	746	747	748	749	750	751	752	753	754	755	756	757	758	759	760	761	762	763	764	765	766	767	768	769	770	771	772	773	774	775	776	777	778	779	780	781	782	783	784	785	786	787	788	789	790	791	792	793	794	795	796	797	798	799	800	801	802	803	804	805	806	807	808	809	810	811	812	813	814	815	816	817	818	819	820	821	822	823	824	825	826	827	828	829	830	831	832	833	834	835	836	837	838	839	840	841	842	843	844	845	846	847	848	849	850	851	852	853	854	855	856	857	858	859	860	861	862	863	864	865	866	867	868	869	870	871	872	873	874	875	876	877	878	879	880	881	882	883	884	885	886	887	888	889	890	891	892	893	894	895	896	897	898	899	900	901	902	903	904	905	906	907	908	909	910	911	912	913	914	915	916	917	918	919	920	921	922	923	924	925	926	927	928	929	930	931	932	933	934	935	936	937	938	939	940	941	942	943	944	945	946	947	948	949	950	951	952	953	954	955	956	957	958	959	960	961	962	963	964	965	966	967	968	969	970	971	972	973	974	975	976	977	978	979	980	981	982	983	984	985	986	987	988	989	990	991	992	993	994	995	996	997	998	999	1000
																		Elements with atomic numbers 112-116 have been reported but not fully authenticated																																																																																																																																																																																																																																																																																																																																																																																																																																																																																																																																																																																																																																																																																																																																																																																																																																																																																																																																																																																																															

* The lanthanoids (atomic numbers 58-71) and the actinoids (atomic numbers 90-103) have been omitted.

The relative atomic masses of copper and chlorine have not been rounded to the nearest whole number.