

Mathematics Workbook

Valid from April 2011 to August 2011

Functional Skills Qualification in Mathematics at Entry 2

Learner name

Learner signature and date

Work through the whole book.

- Answer every question.
- You can write or draw to show your answers in the workbook.
- You can use a calculator.

Your tutor may read the questions to you.

Ask your tutor if you do not understand any words.

You have up to 1 hour to complete the workbook.

Your tutor may give you objects to help you with the questions.

You will need:

- Pencil
- Ruler
- Rubber

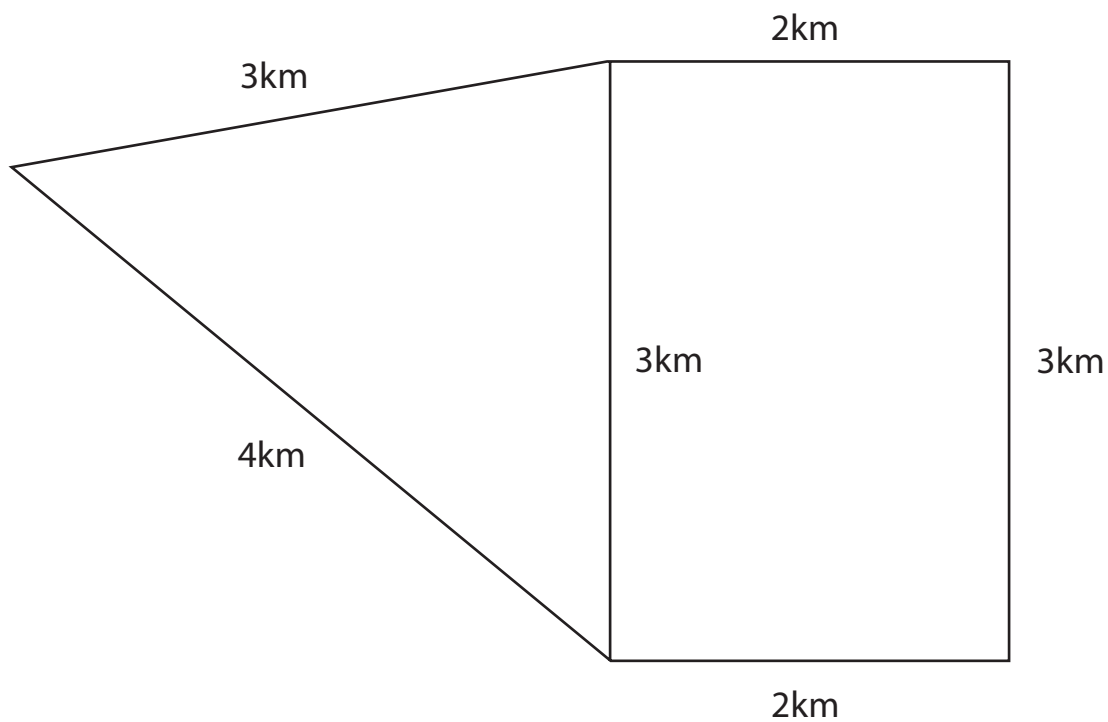
Turn over ►

The charity fun run

1: Planning the run

You are planning a charity fun run.

You must choose a route for the run.
The run must be 10km long.



Use the diagram to choose a route for the run.
Show your route in the box below.

(1)

How many edges does the shape of your route have?
Write your answer in the box below.

(1)

The roads must close for the run.

The run starts at 10 am.

The run lasts for 2 hours.

The roads must stay closed for one more hour after the run.

What time can the roads open again?

Write your answer in the box below.

(1)

The runners need water to drink.

Each runner should drink 1000ml of water.

Here is a bottle of water for the runners.



How many bottles of water should each runner drink?

Write your answer in the box below.

(1)

You order t-shirts in different sizes to give to the runners.

Size of t-shirt	Number ordered
Small	30
Medium	40
Large	50
Extra large	30

Which size of t-shirt do you order most of?

Write your answer in the box below.

(1)

Which sizes of t-shirt do you order the same of?

Write your answers in the box below.

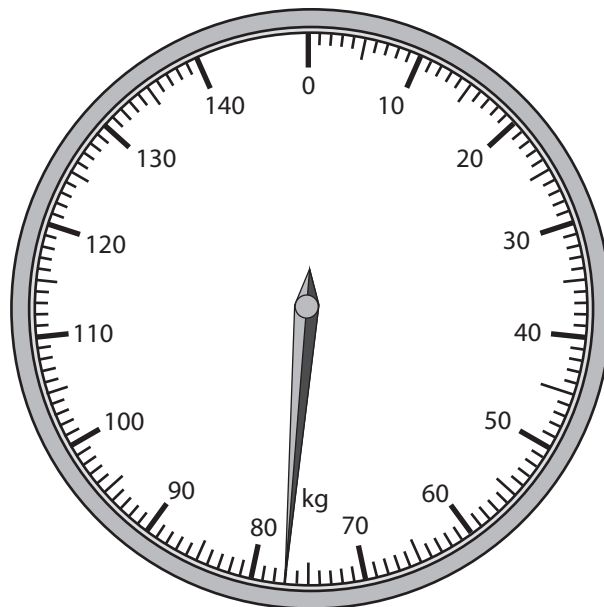
(1)

TURN OVER FOR THE NEXT QUESTION

2: Training for the run

Bula starts to train for the run.

She checks her weight before she starts training.



Bula's weight

What is Bula's weight?

Write your answer in the box below.

(1)

Bula wants to lose 10kg in weight before the run.
She only loses half of the 10kg in weight.

How much weight does Bula lose?

Show your working in the box below.

(1)

What is Bula's weight now?

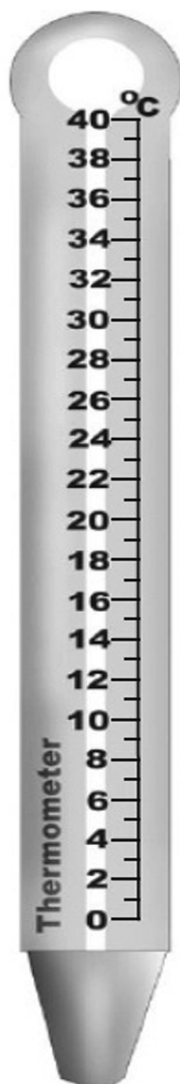
Show your working in the box below.

(1)

3: At the run

A thermometer on the wall shows the temperature is 24°C at the start of the run.

Mark the temperature on the thermometer.



(1)

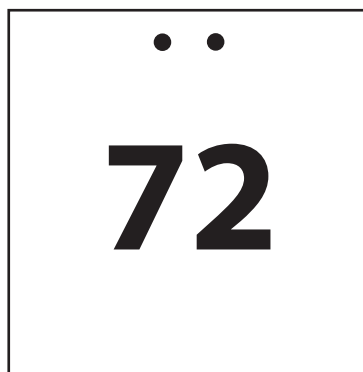
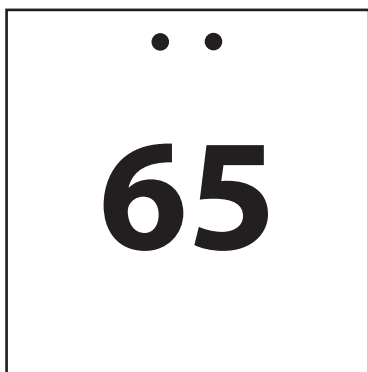
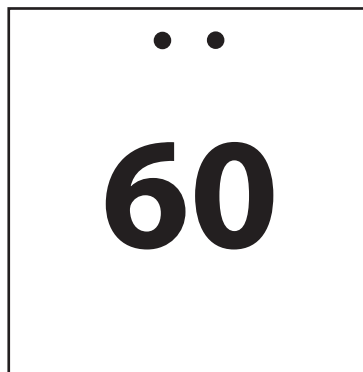
The cost to enter the run is £20 for each runner.
Bula and her 3 friends each pay £20 to enter the run.

How much do Bula and her friends pay to enter the run in total?

Show your working in the box below.

(1)

Bula and her friends are given race numbers for the run.



Which of the race numbers are odd numbers?
Circle the odd numbers.

(1)

Bula buys a programme for the run.

The programme costs 75 pence.

Bula pays with a £1 coin.

How much change should Bula get?

Show your working in the box below.

(1)

Circle the coins Bula could get as her change.



(1)

Write down a calculation Bula can do to check her change.

(1)

Bula and her 3 friends finish the run.

These are their finishing times.

Finishing times:	
Ali	47 mins
Bula	45 mins
Mimi	50 mins
Sam	48 mins

Put the finishing times in order, starting with the fastest.

Write your answer in the box below.

(1)

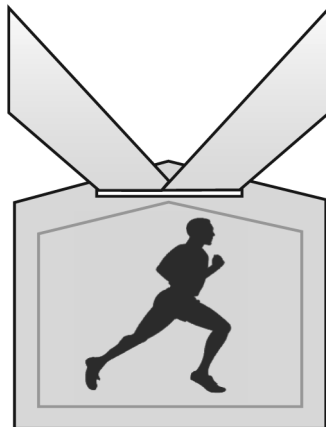
All the runners who finish the run get a medal.
The medals are in the shape of a circle.

Draw the shape of a medal.

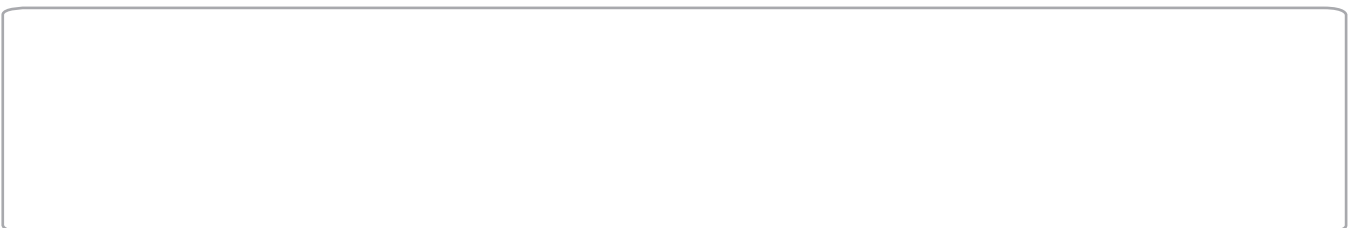


(1)

This is a picture of the medal from last year's charity fun run.



How wide is last year's medal?
Write your answer in the box below.



(1)