

Write your name here

Surname

Other names

Edexcel
Functional Skills

Centre Number

--	--	--	--	--

Candidate Number

--	--	--	--	--

English

Level 1

Component 2: Reading

09–13 January 2012

Time: 45 minutes

Paper Reference

E102/01

You may use a dictionary.

Total Marks

My signature confirms that I will not discuss the content of the test with anyone until the end of the 5 day test window.

Signature: _____

Instructions

- Use **black** ink or ball-point pen.
- **Fill in the boxes** at the top of this page with your name, centre number and candidate number.
- Sign the declaration.
- Answer **all** questions.
- Answer the questions in the spaces provided
– *there may be more space than you need.*

Information

- The total mark for this paper is 20.
- The marks for **each** question are shown in brackets
– *use this as a guide as to how much time to spend on each question.*

Advice

- Read each question carefully before you start to answer it.
- Keep an eye on the time.
- Try to answer every question.
- Check your answers if you have time at the end.

Turn over ►

P37669A

©2012 Pearson Education Ltd.

5/3/4



PEARSON

SECTION A

Read Text A and answer questions 1 – 7.

Text A

You read this article in the Estrick Community Newsletter.

Estrick Wood Country Park: a rubbish dump?

By Satbir Ranu

When was the last time you went to Estrick Wood Country Park? If you were unfortunate enough to go recently, as I did, you would find that this once beautiful woodland area has been spoilt!



Last Sunday when I took a walk through Estrick Wood Country Park I was shocked by the amount of rubbish there was. I was so disgusted by what I saw I decided that something had to be done! That as a community we should not be allowing this to happen to our beautiful park. A park that we have all enjoyed at one time or another.

So what can we do? Let's tell Estrick Council how upset we are and what we want them to do about it. Write to your MP demanding something be done! Encourage people to put their litter in bins.

But as well as asking others to do things, we could take action ourselves. I have contacted Eileen Roberts, Environmental Officer at *Friends of Estrick Wood*, who has agreed to organise a clean-up day on Saturday 3 March.

So why not come along and help? You don't want to see your park become wasteland, do you? You want a place for your kids to play, don't you? To enjoy a walk with your friends and family, surely?

We want as many people as possible to get involved. So please come along and help restore Estrick Wood Country Park to its former glory. For more details, please telephone 0154367895 or email sranu@mymail.com



Answer questions 1 to 3 with a cross in the box ☒. If you change your mind about an answer, put a line through the box ☒ and then mark your new answer with a cross ☒.

1 The **main** purpose of this article is to:

- A inform the reader about walks through Estrick Wood Country Park
- B encourage the reader to help clean up Estrick Wood Country Park
- C encourage the reader to go to Estrick Wood Country Park more often
- D inform the reader about the beauty of Estrick Wood Country Park

(Total for Question 1 = 1 mark)

2 Who should you contact if you want to complain about the state of Estrick Wood Country Park?

- A Satbir Ranu
- B Eileen Roberts
- C Estrick Council
- D Friends of Estrick Wood

(Total for Question 2 = 1 mark)

3 According to Text A, which of these statements is true?

- A Satbir Ranu recently walked in the wood.
- B The council have placed litter bins in the wood.
- C Estrick Wood Country Park is clean and tidy.
- D The council are organising the clean-up day.

(Total for Question 3 = 1 mark)



4 According to Text A, what is the date of the Estrick Wood Country Park clean-up day?

.....

(Total for Question 4 = 1 mark)

5 List **two** features of Text A that help to present information.

You do **not** need to write in sentences.

1

.....

2

.....

(Total for Question 5 = 2 marks)

6 Using the information in Text A, what **two** actions could you take if you are concerned about the state of Estrick Wood Country Park?

You do **not** need to write in sentences.

1

.....

2

.....

(Total for Question 6 = 2 marks)



7 A friend of yours is thinking about taking part in the clean-up day but is unsure.

Using the information in Text A, give **two** reasons why it is a good idea for your friend to take part in the clean-up day.

You do **not** need to write in sentences.

1

2

(Total for Question 7 = 2 marks)

TOTAL FOR SECTION A = 10 MARKS



SECTION B

Read Text B and answer questions 8 – 13.

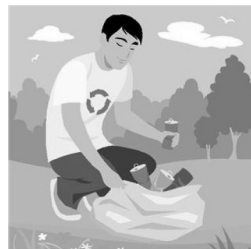
Text B

You have offered to help in the clean up of Estrick Wood Country Park and Satbir Ranu has sent you this letter.

Estrick Wood Country Park – The Clean Up

102 Beachwood Avenue
Estrick
ES1 4DA

25 February 2012



Dear Helper

Health and Safety Guidance for Helpers

Thank you for volunteering to help clear up the litter so that the community may once again enjoy the natural beauty of Estrick Wood Country Park. I am sure you will have a great day and enjoy meeting new people. It will be hard work but really rewarding when you see Estrick Wood Country Park free of litter.

It is important that on the day of the clean up, health and safety procedures are followed to make sure that no one is hurt or injured in any way. Please take a few moments to read through the following guidance before you arrive at the wood next Saturday.

For your own safety and comfort:

- wear sturdy boots/shoes (please do not come in sandals)
- bring a waterproof overcoat in case of rain
- bring a pair of heavy-duty gardening gloves or something similar.

We have qualified first aiders, who will be able to administer first aid if it is required.

There will be refreshments available, which will include water, tea, coffee and orange juice. There will also be a supply of biscuits for those who get hungry. I would recommend that you bring some sandwiches to keep you going during the day. However, at the end of the day we plan to have a barbecue to celebrate our achievements!

On Saturday, *Friends of Estrick Wood* will meet us in the car park of the wood at 9.00 am and discuss the plan for the day.

Yours sincerely

Satbir Ranu

Satbir Ranu



Answer question 8 with a cross in the box ☒ you think is correct. If you change your mind about an answer, put a line through the box ☒ and then mark your new answer with a cross ☒.

8 What is the **main** purpose of this letter?

- A to inform you of what drinks will be available
- B to let you know that there will be first aiders present
- C to inform you that everyone is meeting in the car park at 10am
- D to give you advice and information before the clean up

(Total for Question 8 = 1 mark)

Answer question 9 with a cross in the two boxes ☒ you think are correct. If you change your mind about an answer, put a line through the box ☒ and then mark your new answer with a cross ☒.

9 Identify **two** features from the list below that show that Text B is a letter.

- A title
- B address and date
- C bullet points
- D subheading in bold
- E use of Yours sincerely
- F image

(Total for Question 9 = 2 marks)



10 Your friend has decided to join you in the clean-up day.

Using Text B, identify **two** things that your friend should have for the clean-up day.

You do **not** need to write in sentences.

1

2

(Total for Question 10 = 2 marks)

11 Your friend wants to help in the clean up, but is a little worried about health and safety.

Using Text B give **two** examples to reassure your friend that Satbir Ranu takes health and safety seriously.

You do **not** need to write in sentences.

1

2

(Total for Question 11 = 2 marks)

12 According to Text B, what should you **not** wear for the clean up?

You do **not** need to write in sentences.

.....

(Total for Question 12 = 1 mark)



13 Your friend is not sure if she wants to attend the clean-up day.

Using Text B, give **two** reasons to convince your friend that taking part in the clean-up day will be enjoyable.

You do **not** need to write in sentences.

1

2

(Total for Question 13 = 2 marks)

TOTAL FOR SECTION B = 10 MARKS
TOTAL FOR PAPER = 20 MARKS



BLANK PAGE



BLANK PAGE



BLANK PAGE

