

Free-Standing Mathematics Qualification
June 2008
Foundation Level



WORKING IN 2 AND 3 DIMENSIONS
Unit 2

6982/2PM

PRELIMINARY MATERIAL

DATA SHEET

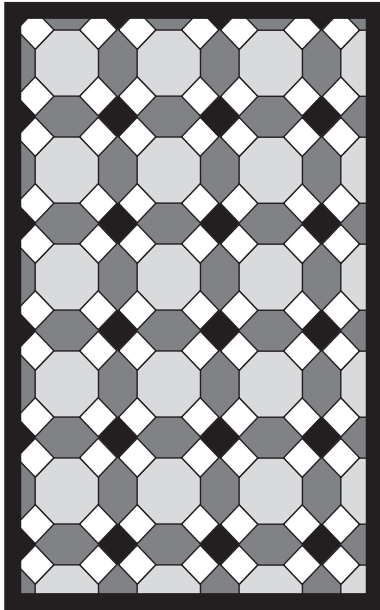
**To be issued to candidates between Wednesday 30 April 2008
and Wednesday 7 May 2008**

REMINDER TO CANDIDATES

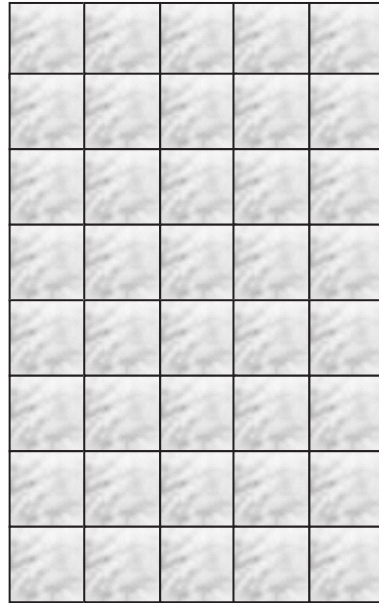
YOU MUST **NOT** BRING THIS DATA SHEET
WITH YOU WHEN YOU SIT THE EXAMINATION.
A CLEAN COPY WILL BE MADE AVAILABLE.

Bathroom floor tiles and washstands

Examples of floor tiles and washstands in Victorian and modern bathrooms are shown below.



Victorian floor tiles

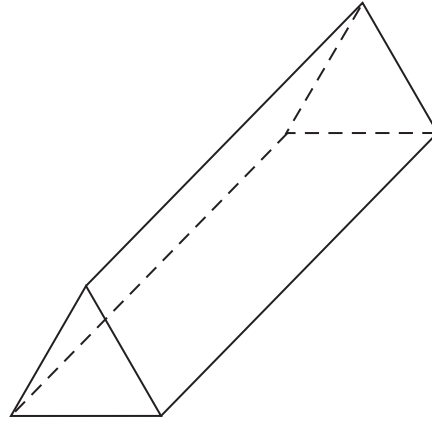


Modern floor tiles

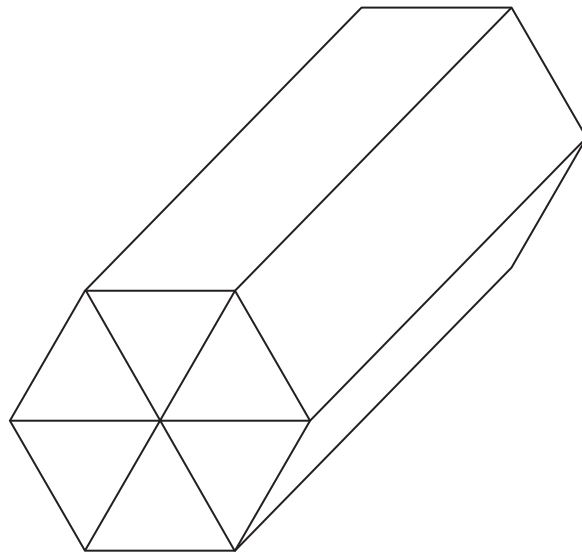
Two images cannot be published on the website for third-party copyright reasons. The images are not required for completion of the questions.

Chocolate bars

A company makes a chocolate bar in the shape of a triangular prism.



They also make a multi-pack of six bars. The bars are packed together in the shape of a prism whose cross-section is a regular hexagon.



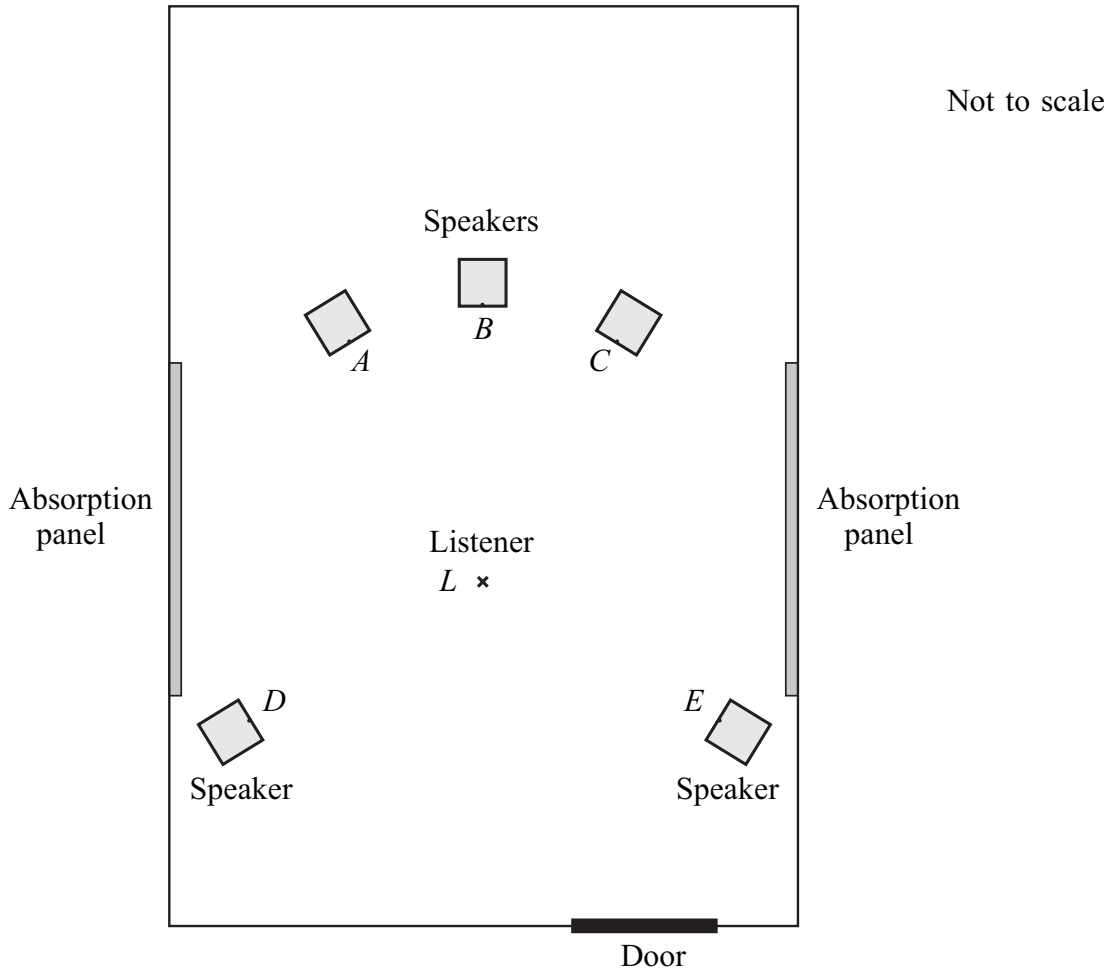
Sound studio

The diagram shows the plan of a sound studio.

A, *B*, *C*, *D* and *E* are the fronts of the speakers.

The listener sits at the position marked with a cross, *L*.

Absorption panels on the walls help to reduce unwanted echoes.



END OF DATA SHEET