



Entry Level Certificate

703/03

**GEOGRAPHY SPECIFICATION
ORAL TEST
RESOURCE FOLDER**

7 January to 11 March 2008

TO BE OPENED ON RECEIPT

Instructions To Candidates

You are allowed to study this **Resource Folder**, in lessons, **one week** before you take the Oral Test.

Photosheet 1



Photo A



Photo B



Photo C



Photo D

Graph 1

Time spent on work and leisure activities 1980-2005

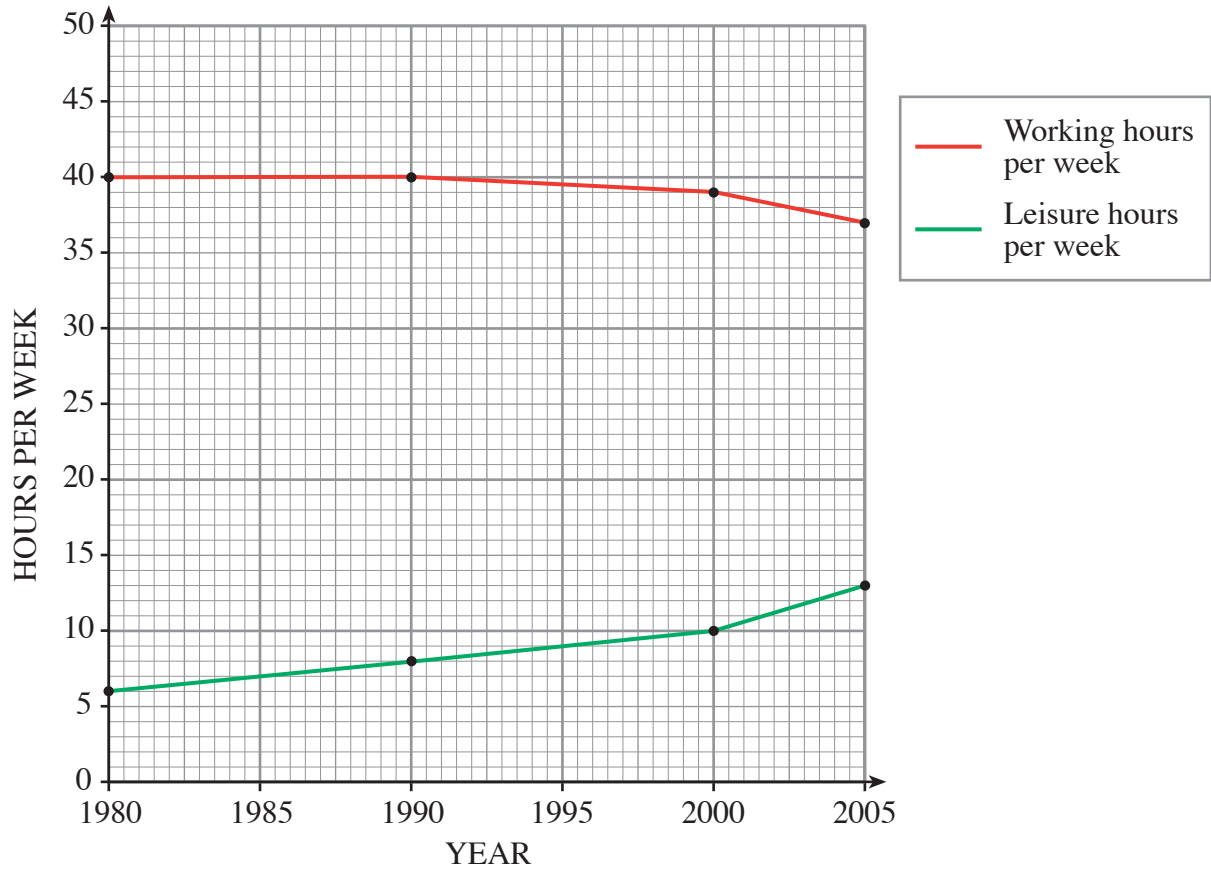


Table 1

Number of long distance holidays taken by people living in the UK

Long distance holidays	2000	2005
	9 million	18 million

Photosheet 2



Photo A



Photo B



Photo C



Photo D



Photo E

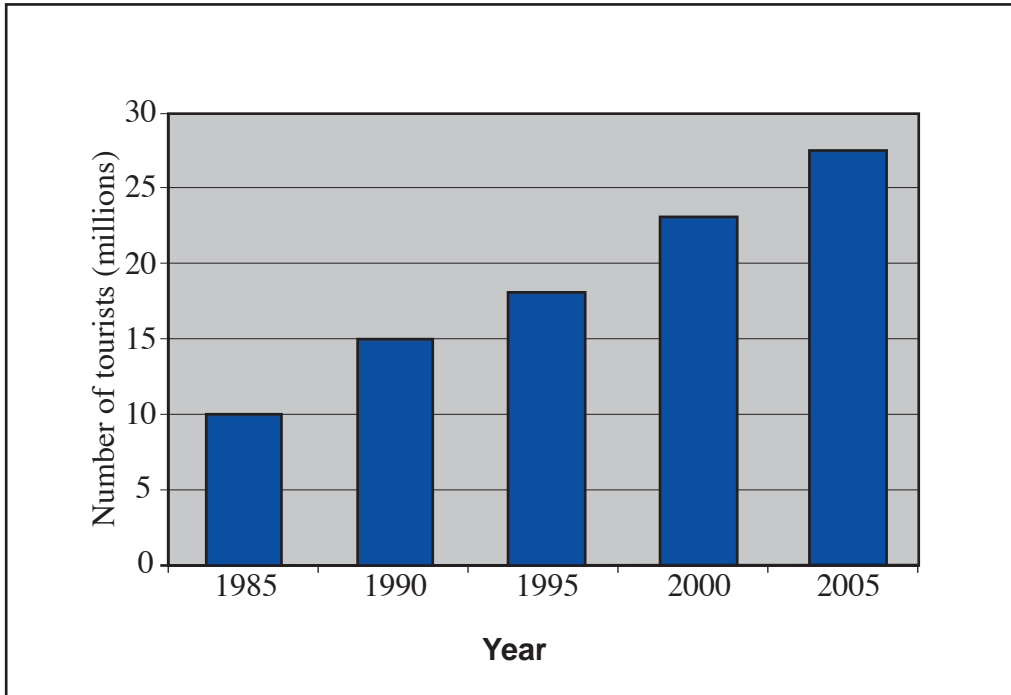
Map 1 Europe



1000 km



KEY	
■	Capital City
☀	BEACH RESORT
▲	VOLCANO

Graph 2**Tourist visits to Africa 1985-2005**

Photosheet 3



Photo A



Photo B



Photo C



Photo D



Photo E

Signpost 1



Signpost 2

