

Please check the examination details below before entering your candidate information

Candidate surname

Other names

**Pearson
Edexcel Award**

Centre Number

--	--	--	--	--

Candidate Number

--	--	--	--	--

Thursday 7 January 2021

Morning (Time: 1 hour)

Paper Reference **ANM10/1A**

Number and Measure

Level 1

Section A (Calculator)



You must have: Ruler graduated in centimetres and millimetres, protractor, pen, HB pencil, eraser, calculator.

Total Marks

Instructions

- Use **black** ink or ball-point pen.
- **Fill in the boxes** at the top of this page with your name, centre number and candidate number.
- Answer **all** questions.
- Answer the questions in the spaces provided – *there may be more space than you need.*
- **Calculators may be used.**
- If your calculator does not have a π button, take the value of π to be 3.142 unless the question instructs otherwise.

Information

- The total mark for this section is 50
- The marks for **each** question are shown in brackets – *use this as a guide as to how much time to spend on each question.*

Advice

- Read each question carefully before you start to answer it.
- Keep an eye on the time.
- Try to answer every question.
- Check your answers if you have time at the end.

Turn over ►

P63677RA

©2021 Pearson Education Ltd.

1/1/1/1/1/1/



P 6 3 6 7 7 R A 0 1 1 2



Pearson

Section A

Answer ALL questions.

Write your answers in the spaces provided.

You must write down all the stages in your working.

1 Here is some information about five brands of toaster.

Brand	Number of slots	Number of settings	Cost
Smug	4	8	£98.99
Betoast	4	6	£44.99
Grillo	2	6	£69.99
Cookit	4	3	£26.00
Toasty	2	6	£34.98

(a) Which toaster has 4 slots and 6 settings?

.....
(1)

(b) What is the cost of the toaster with 3 settings?

£.....
(1)

(c) Which of the toasters with 6 settings is the most expensive?

.....
(1)

(Total for Question 1 is 3 marks)

2 Roya invests £650 at 2% interest for one year.

How much interest does she get for the one year?

£.....

(Total for Question 2 is 2 marks)

DO NOT WRITE IN THIS AREA

DO NOT WRITE IN THIS AREA

DO NOT WRITE IN THIS AREA



3 (a) Use your calculator to work out $19.7 + 3.54 - 8.46$

.....
(1)

(b) Use your calculator to work out 27.8×3.5

.....
(1)

(c) Use your calculator to work out $42.24 \div 12$

.....
(1)

(Total for Question 3 is 3 marks)

4 (a) Write 8.73 correct to the nearest whole number.

.....
(1)

(b) Write the number 736 correct to the nearest hundred.

.....
(1)

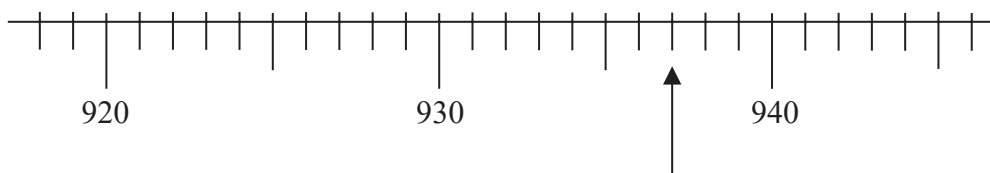
(c) Write down the value of the 4 in 7.43

.....
(1)

(Total for Question 4 is 3 marks)



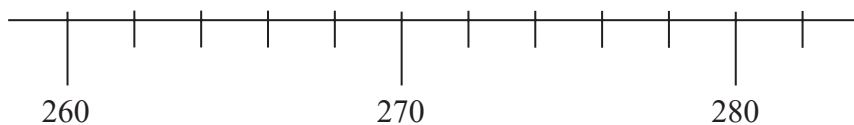
5 Here is a scale.



(a) Write down the number shown by the arrow.

.....
(1)

Here is a different scale.



(b) On this scale, mark with an arrow (↑) the number 268

(1)

(Total for Question 5 is 2 marks)

6 (a) Write down a multiple of 8

.....
(1)

(b) Write down a common factor of 12 and 20

.....
(1)

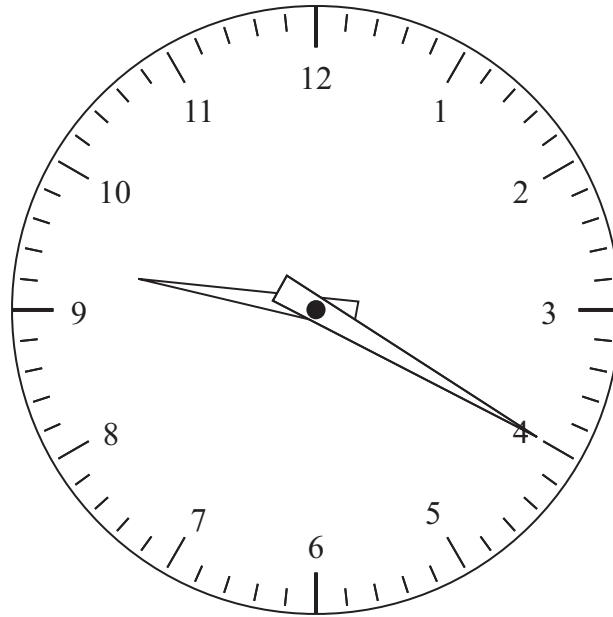
(c) Write down a prime number greater than 14

.....
(1)

(Total for Question 6 is 3 marks)



7



It is **evening**.

Write down the time shown on the clock.

.....

(Total for Question 7 is 2 marks)

8 Work out

$$3 \text{ minutes } 48 \text{ seconds} + 2 \text{ minutes } 20 \text{ seconds}$$

Give your answer in **seconds**.

..... seconds

(Total for Question 8 is 3 marks)



9 (a) Write $\frac{1}{5}$ as a decimal.

.....
(1)

(b) Write 39% as a fraction.

.....
(1)

(c) Work out $\frac{5}{19} \times 3$

Give your answer as a fraction.

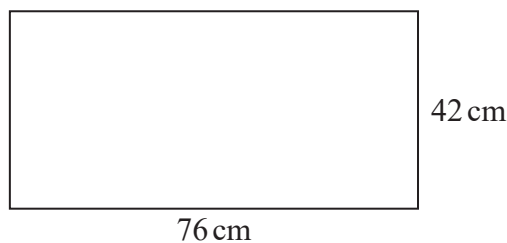
.....
(1)

(d) Work out $\frac{2}{9}$ of 450

.....
(2)

(Total for Question 9 is 5 marks)

10 Here is a rectangle.



Work out the perimeter of the rectangle.

..... cm

(Total for Question 10 is 2 marks)



DO NOT WRITE IN THIS AREA

DO NOT WRITE IN THIS AREA

DO NOT WRITE IN THIS AREA

11 Here is part of a calendar for September 2020

September 2020						
Sun	Mon	Tue	Wed	Thu	Fri	Sat
		1	2	3	4	5
6	7	8	9	10		

(a) What day of the week is the 23rd September 2020?

.....
(1)

(b) What is the date three weeks after the 18th September 2020?

.....
(2)

(Total for Question 11 is 3 marks)

12 Ahmed buys a pack of 8 ice lollies for £2.47
The 8 ice lollies in the pack are all the same.

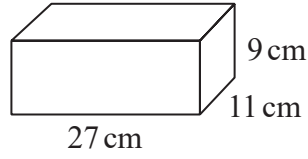
What is the cost of one of the ice lollies?
Give your answer to the nearest penny.

.....p

(Total for Question 12 is 2 marks)



13 Here is a cuboid.



Work out the volume of the cuboid.

..... cm³

(Total for Question 13 is 2 marks)

14 Work out $3\text{ km } 251\text{ m} + 5\text{ km } 623\text{ m} - 2\text{ km } 202\text{ m}$

.....

(Total for Question 14 is 2 marks)

DO NOT WRITE IN THIS AREA

DO NOT WRITE IN THIS AREA

DO NOT WRITE IN THIS AREA



DO NOT WRITE IN THIS AREA

DO NOT WRITE IN THIS AREA

DO NOT WRITE IN THIS AREA

15 Here is the price list at a refreshment kiosk.

Refreshments	
cup of coffee	£1.70
cup of tea	£1.50
teacake	95p

Kali buys

- 4 cups of coffee
- 1 cup of tea
- 3 teacakes

Kali pays with a £20 note.
How much change should he get?

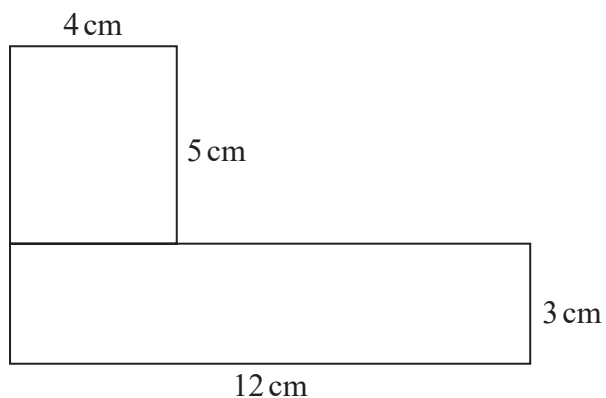
£.....

(Total for Question 15 is 4 marks)



P 6 3 6 7 7 R A 0 9 1 2

16 Here is a shape made from two rectangles.



Work out the total area of the shape.

..... cm²

(Total for Question 16 is 3 marks)

17 Lily has 823p
Imani has £3.42

Lily has more than Imani.
How much more?

.....

(Total for Question 17 is 2 marks)



DO NOT WRITE IN THIS AREA

DO NOT WRITE IN THIS AREA

DO NOT WRITE IN THIS AREA

18 Here is information from Helena's mobile phone bill for April 2020

Mobile phone bill	April 2020
Calls 145 minutes (first 90 minutes free)	
Texts 623 (first 400 texts free)	
Costs	
Monthly charge £18.75	
Calls 11p per minute	
Texts 5p each	

Work out the total of Helena's mobile phone bill.

£.....

(Total for Question 18 is 4 marks)

TOTAL FOR SECTION A IS 50 MARKS



DO NOT WRITE IN THIS AREA

DO NOT WRITE IN THIS AREA

DO NOT WRITE IN THIS AREA

BLANK PAGE

