

Please check the examination details below before entering your candidate information

Candidate surname

Other names

**Pearson
Edexcel Award**

Centre Number

| | | | | |
|--|--|--|--|--|
| | | | | |
|--|--|--|--|--|

Candidate Number

| | | | | |
|--|--|--|--|--|
| | | | | |
|--|--|--|--|--|

Thursday 2 May 2019

Morning (Time: 1 hour)

Paper Reference **ANM20/2A**

Number and Measure

Level 2

Section A (Calculator)



You must have: Ruler graduated in centimetres and millimetres, protractor, pen, HB pencil, eraser, calculator.

Total Marks

Instructions

- Use **black** ink or ball-point pen.
- **Fill in the boxes** at the top of this page with your name, centre number and candidate number.
- Answer **all** questions.
- Answer the questions in the spaces provided – *there may be more space than you need.*
- **Calculators may be used.**
- If your calculator does not have a π button, take the value of π to be 3.142 unless the question instructs otherwise.

Information

- The total mark for this section is 50
- The marks for **each** question are shown in brackets – *use this as a guide as to how much time to spend on each question.*

Advice

- Read each question carefully before you start to answer it.
- Keep an eye on the time.
- Try to answer every question.
- Check your answers if you have time at the end.

Turn over ►

P59970A

©2019 Pearson Education Ltd.

6/6/4/




Pearson

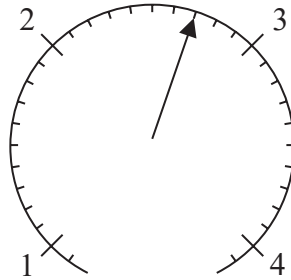
Section A

Answer ALL questions.

Write your answers in the spaces provided.

You must write down all the stages in your working.

1 (a)



Write down the number marked with the arrow.

.....
(1)

(b)



Write down the number marked with the arrow.

.....
(1)

(Total for Question 1 is 2 marks)

2 On a table there are 150 oranges and 350 apples.

Write as a ratio the number of oranges to the number of apples.
Give your answer in its simplest form.

.....
(Total for Question 2 is 2 marks)



- 3 (a) Work out $£131 \div 9$
Give your answer to the nearest penny.

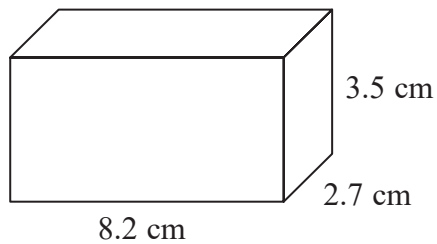
£.....
(2)

- (b) Work out 4.6×2.84

.....
(1)

(Total for Question 3 is 3 marks)

- 4 Work out the volume of this cuboid.



..... cm^3

(Total for Question 4 is 2 marks)

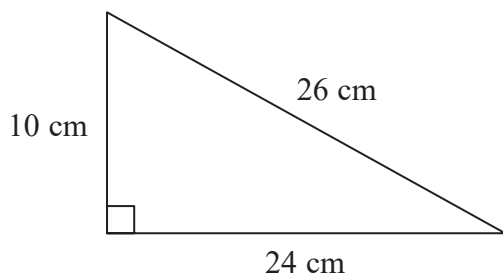
- 5 Change 800 Turkish lira into pounds (£).
Use an exchange rate of $£1 = 5$ Turkish lira.

£.....

(Total for Question 5 is 2 marks)



6



Work out the perimeter of this triangle.

..... cm

(Total for Question 6 is 2 marks)

7 (a) Find the value of 41^3

.....
(1)

(b) Find the value of $\sqrt{289}$

.....
(1)

(c) Work out the value of $2^5 \times 3^3$

.....
(2)

(Total for Question 7 is 4 marks)



DO NOT WRITE IN THIS AREA

8 Work out 6% of 700

.....

(Total for Question 8 is 2 marks)

9 Change 3.5 gallons into litres.
(1 gallon = 4.5 litres)

..... litres

(Total for Question 9 is 2 marks)

10 Work out $5\frac{2}{5} \div 2\frac{1}{4}$

.....

(Total for Question 10 is 2 marks)

DO NOT WRITE IN THIS AREA

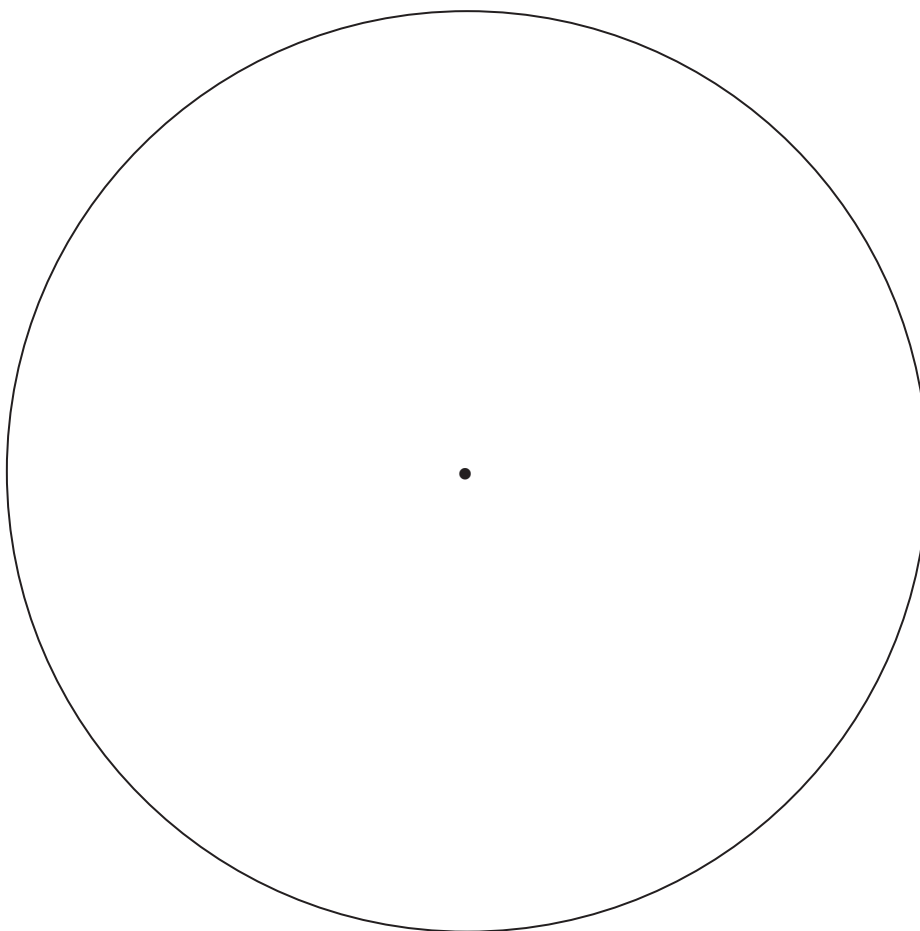
DO NOT WRITE IN THIS AREA



- 11 A shop sells boxes of washing powder in three sizes: large, medium and small. The table gives the number of boxes of each size sold last month.

| | |
|--------|-----|
| Large | 400 |
| Medium | 375 |
| Small | 225 |

Draw a pie chart for this information.



(Total for Question 11 is 4 marks)

DO NOT WRITE IN THIS AREA

DO NOT WRITE IN THIS AREA

DO NOT WRITE IN THIS AREA



DO NOT WRITE IN THIS AREA

DO NOT WRITE IN THIS AREA

DO NOT WRITE IN THIS AREA

12 Joan invests £4500 for 4 years in an account paying simple interest at a rate of 3% per year.

Work out the total amount of simple interest paid to Joan by the end of 4 years.

£.....

(Total for Question 12 is 3 marks)

13 Find the Highest Common Factor (HCF) of 24 and 56

.....

(Total for Question 13 is 3 marks)



14 Barry makes wooden cats and dogs.

He earns £2.80 for each cat he makes.

He earns £3.20 for each dog he makes.

Last month Barry made 48 cats and 63 dogs.

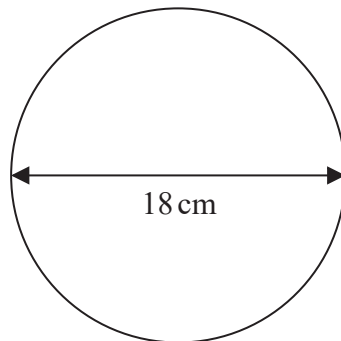
He paid £67.15 tax on what he earned last month.

How much money did Barry get to keep for the month's work?

£.....

(Total for Question 14 is 4 marks)

15



A circle has a diameter of 18 cm.

Work out the circumference of the circle.

..... cm

(Total for Question 15 is 3 marks)

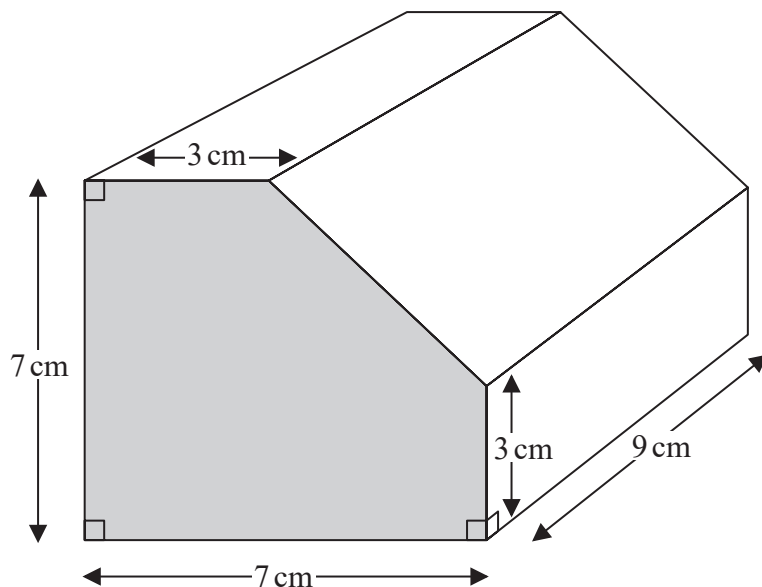


DO NOT WRITE IN THIS AREA

DO NOT WRITE IN THIS AREA

DO NOT WRITE IN THIS AREA

16 Here is a prism.



(i) Work out the area of the shaded face.

..... cm²
(3)

(ii) Work out the volume of the prism.

..... cm³
(1)

(Total for Question 16 is 4 marks)



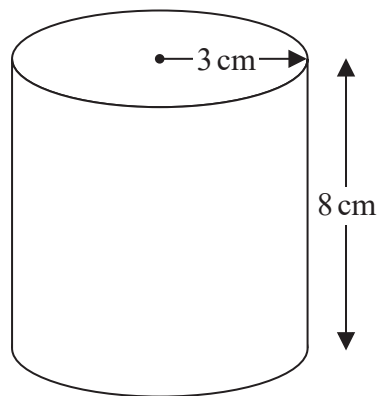
17 The number of cookers sold in a year by a shop increases from 720 to 972

What is the percentage increase in the number of cookers sold in the year by the shop?

.....%

(Total for Question 17 is 3 marks)

18 Here is a cylinder.



The height of the cylinder is 8 cm.

The radius of the cylinder is 3 cm.

Work out the volume of the cylinder.

..... cm³

(Total for Question 18 is 3 marks)

TOTAL FOR SECTION A IS 50 MARKS



DO NOT WRITE IN THIS AREA

DO NOT WRITE IN THIS AREA

DO NOT WRITE IN THIS AREA

BLANK PAGE



DO NOT WRITE IN THIS AREA

DO NOT WRITE IN THIS AREA

DO NOT WRITE IN THIS AREA

BLANK PAGE



Please check the examination details below before entering your candidate information

Candidate surname

Other names

**Pearson
Edexcel Award**

Centre Number

| | | | | |
|--|--|--|--|--|
| | | | | |
|--|--|--|--|--|

Candidate Number

| | | | | |
|--|--|--|--|--|
| | | | | |
|--|--|--|--|--|

Thursday 2 May 2019

Morning (Time: 30 minutes)

Paper Reference **ANM20/2B**

Number and Measure

Level 2

Section B (Non-Calculator)



You must have: Ruler graduated in centimetres and millimetres, protractor, pen, HB pencil, eraser.

Total Marks

Instructions

- Use **black** ink or ball-point pen.
- **Fill in the boxes** at the top of this page with your name, centre number and candidate number.
- Answer **all** questions.
- Answer the questions in the spaces provided – *there may be more space than you need.*
- **Calculators must not be used.**

Information

- The total mark for this section is 30
- The total mark for this paper is 80
- The marks for **each** question are shown in brackets – *use this as a guide as to how much time to spend on each question.*

Advice

- Read each question carefully before you start to answer it.
- Keep an eye on the time.
- Try to answer every question.
- Check your answers if you have time at the end.

Turn over ►

P59971A

©2019 Pearson Education Ltd.

6/6/4/




Pearson

Section B

Answer ALL questions.

Write your answers in the spaces provided.

You must write down all the stages in your working.

You must NOT use a calculator for this section.

- 1** Write these numbers in order of size.
Start with the smallest number.

-2 6 -7 1 -5 -4 9

.....
(Total for Question 1 is 1 mark)

- 2** Divide 147 in the ratio 3 : 4

.....
(Total for Question 2 is 2 marks)

- 3** 5 fans of the same type have a total weight of 35 kg.
What is the total weight of 9 of these fans?

..... kg
(Total for Question 3 is 3 marks)

DO NOT WRITE IN THIS AREA

DO NOT WRITE IN THIS AREA

DO NOT WRITE IN THIS AREA



4 (a) Work out -5×-8

.....
(1)

(b) Work out $-7 + -4$

.....
(1)

(Total for Question 4 is 2 marks)

5 (a) Work out $4.7 + 180 + 26.52 - 21.45$

.....
(2)

(b) Work out 14.35×9

.....
(2)

(Total for Question 5 is 4 marks)



6 (a) Work out $\frac{1}{6} + \frac{5}{12}$

.....
(2)

(b) Work out $\frac{3}{7} \times \frac{9}{10}$

.....
(1)

(Total for Question 6 is 3 marks)

7 (a) Which is bigger, $\frac{1}{7}$ of 91 or $\frac{1}{8}$ of 96?
You must show all your working.

.....
(3)

(b) Write 7 as a fraction of 25

.....
(1)

(Total for Question 7 is 4 marks)

DO NOT WRITE IN THIS AREA

DO NOT WRITE IN THIS AREA

DO NOT WRITE IN THIS AREA



- 8 The total price of a mobile phone is £350 plus 20% VAT.
Work out the total price of the mobile phone.

£.....

(Total for Question 8 is 3 marks)

- 9 Sally has worked out $\frac{41.6 \times 49.2}{0.52}$ on her calculator.

Her answer is 3936

Using suitable approximations, check that her answer is sensible.

(Total for Question 9 is 3 marks)



10 Write 520 as a percentage of 800

.....%

(Total for Question 10 is 2 marks)

11 Work out $5\frac{2}{3} - 1\frac{3}{5}$

Give your answer as a mixed number in its simplest form.

.....
(Total for Question 11 is 3 marks)

TOTAL FOR SECTION B IS 30 MARKS
TOTAL FOR PAPER IS 80 MARKS

DO NOT WRITE IN THIS AREA

DO NOT WRITE IN THIS AREA

DO NOT WRITE IN THIS AREA



DO NOT WRITE IN THIS AREA

DO NOT WRITE IN THIS AREA

DO NOT WRITE IN THIS AREA

BLANK PAGE



DO NOT WRITE IN THIS AREA

DO NOT WRITE IN THIS AREA

DO NOT WRITE IN THIS AREA

BLANK PAGE

