

Please check the examination details below before entering your candidate information

Candidate surname

Other names

**Pearson  
Edexcel Award**

Centre Number

--	--	--	--	--

Candidate Number

--	--	--	--	--

**Thursday 2 May 2019**

Morning (Time: 1 hour)

Paper Reference **ANM10/1A**

**Number and Measure**

**Level 1**

**Section A (Calculator)**



**You must have:** Ruler graduated in centimetres and millimetres, protractor, pen, HB pencil, eraser, calculator.

Total Marks

### Instructions

- Use **black** ink or ball-point pen.
- **Fill in the boxes** at the top of this page with your name, centre number and candidate number.
- Answer **all** questions.
- Answer the questions in the spaces provided – *there may be more space than you need.*
- **Calculators may be used.**
- If your calculator does not have a  $\pi$  button, take the value of  $\pi$  to be 3.142 unless the question instructs otherwise.

### Information

- The total mark for this section is 50
- The marks for **each** question are shown in brackets – *use this as a guide as to how much time to spend on each question.*

### Advice

- Read each question carefully before you start to answer it.
- Keep an eye on the time.
- Try to answer every question.
- Check your answers if you have time at the end.

Turn over ►

P59969A

©2019 Pearson Education Ltd.

6/6/4/



  
**Pearson**

**Section A**

**Answer ALL questions.**

**Write your answers in the spaces provided.**

**You must write down all the stages in your working.**

**1** Here is some information about 5 kettles.

<b>Make of kettle</b>	<b>Cost</b>	<b>Capacity</b>	<b>Weight</b>	<b>Material</b>
H2O	£35	1.9 litres	1.2 kg	metal
Boilers	£45	1.7 litres	0.9 kg	plastic
A1	£32	1.8 litres	0.8 kg	plastic
Dalong	£95	1.9 litres	1.1 kg	plastic
Brille	£39	1.8 litres	0.9 kg	metal

(a) Which make of kettle is the cheapest?

.....  
(1)

(b) Which two makes of kettle have the same weight?

..... and .....  
(1)

(c) Which make of kettle has a capacity of 1.9 litres and is made of plastic?

.....  
(1)

**(Total for Question 1 is 3 marks)**



DO NOT WRITE IN THIS AREA

DO NOT WRITE IN THIS AREA

DO NOT WRITE IN THIS AREA

2 (a) Use your calculator to work out  $9.54 \times 2.5$

.....  
(1)

(b) Use your calculator to work out  $8.61 \div 0.3$

.....  
(1)

(c) Use your calculator to work out  $9.42 + 7.8 - 3.52$

.....  
(1)

**(Total for Question 2 is 3 marks)**

3 (a) Write 235 seconds in minutes and seconds.

..... minutes ..... seconds  
(2)

(b) Change 2.6 metres into centimetres.

..... centimetres  
(1)

(c) Work out  $3 \text{ km } 780 \text{ m} + 4 \text{ km } 120 \text{ m} - 2 \text{ km } 350 \text{ m}$

.....  
(2)

**(Total for Question 3 is 5 marks)**



4 Lethna buys

- 2 packets of seeds at 95p each
- 3 plants at £2.49 each
- 1 gardening magazine for £3.40

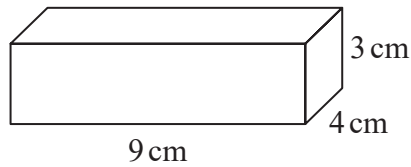
Lethna pays with a £20 note.

How much change should she get?

£.....

**(Total for Question 4 is 4 marks)**

5 Here is a cuboid.



Work out the volume of the cuboid.

..... cm<sup>3</sup>

**(Total for Question 5 is 2 marks)**



DO NOT WRITE IN THIS AREA

DO NOT WRITE IN THIS AREA

DO NOT WRITE IN THIS AREA

6 The distance chart gives the distances, in kilometres, between four villages.

<b>Purton</b>			
7	<b>Cricklade</b>		
11	5	<b>Latton</b>	
8	9	14	<b>Minety</b>

Chris drives

from Purton to Latton  
then from Latton to Minety  
then from Minety to Purton

Work out the total distance Chris drives.

..... kilometres

**(Total for Question 6 is 2 marks)**

7 A pack of 6 yogurts costs £2.09

What is the cost of one of these yogurts?  
Give your answer to the nearest penny.

.....p

**(Total for Question 7 is 3 marks)**

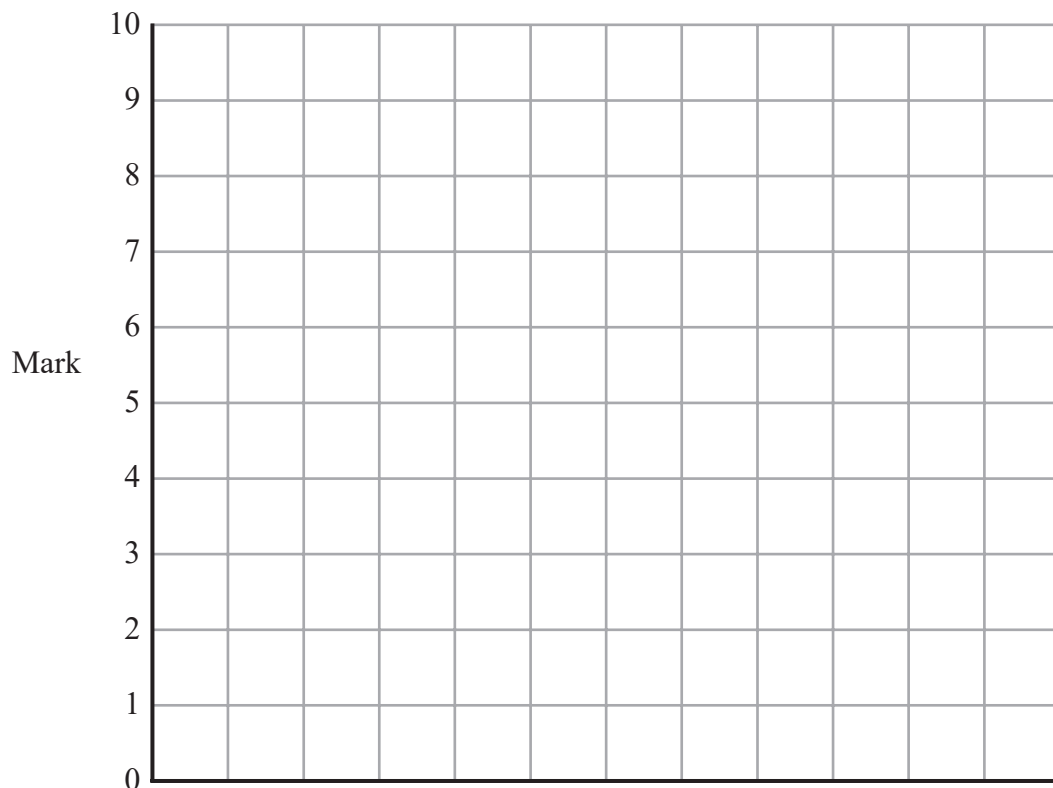


P 5 9 9 6 9 A 0 5 1 2

- 8 Boris does a test each day for 5 days.  
The table shows his marks.

Day	Mark
Mon	7
Tue	6
Wed	5
Thu	9
Fri	10

On the grid, draw a bar chart to show this information.



(Total for Question 8 is 3 marks)

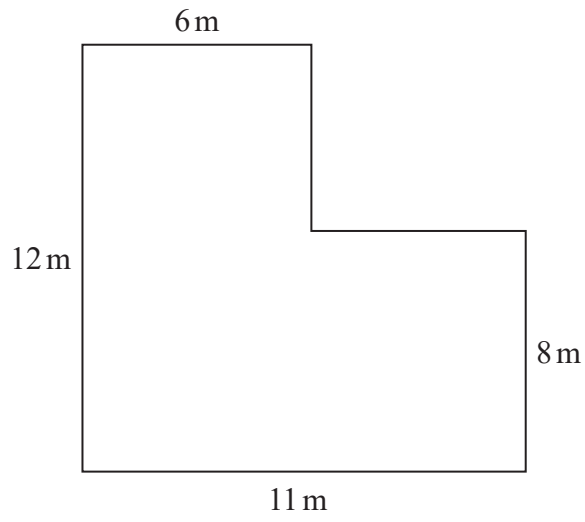


DO NOT WRITE IN THIS AREA

DO NOT WRITE IN THIS AREA

DO NOT WRITE IN THIS AREA

9 Here is a shape made from two rectangles.



Work out the total area of the shape.

..... m<sup>2</sup>

(Total for Question 9 is 3 marks)

10 James has 355p  
Molly has £5.67

Molly has more money than James.

How much more?

£.....

(Total for Question 10 is 2 marks)



11 (a) Write the number **five hundred and nineteen** in figures.

.....  
(1)

(b) Write the number 382 to the nearest ten.

.....  
(1)

(c) Write 7.6 correct to the nearest whole number.

.....  
(1)

(d) Write down a common factor of 30 and 50

.....  
(1)

(e) Write down a multiple of 15

.....  
(1)

**(Total for Question 11 is 5 marks)**





DO NOT WRITE IN THIS AREA

DO NOT WRITE IN THIS AREA

DO NOT WRITE IN THIS AREA

12 Here is the line  $XY$ .



(a) Measure, in cm, the length of the line  $XY$ .

..... cm

(1)

(b) At the point  $X$ , draw an angle of  $75^\circ$

(1)

**(Total for Question 12 is 2 marks)**



P 5 9 9 6 9 A 0 9 1 2

13 (a) Write 80% as a fraction.

.....  
(1)

(b) Write  $\frac{2}{5}$  as a decimal.

.....  
(1)

(c) Work out 30% of 120

.....  
(2)

(d) Work out  $\frac{3}{5} \times 70$

.....  
(2)

**(Total for Question 13 is 6 marks)**

---



DO NOT WRITE IN THIS AREA

DO NOT WRITE IN THIS AREA

DO NOT WRITE IN THIS AREA

14 Here is part of a calendar for August 2019

August 2019						
Sun	Mon	Tue	Wed	Thu	Fri	Sat
				1	2	3
4	5	6	7	8		

(a) What day of the week is the 14th August 2019?

.....  
(1)

(b) What is the date three weeks after the 20th August 2019?

.....  
(2)

**(Total for Question 14 is 3 marks)**



15 Here is Jaden's electricity bill for April 2019

<b>Electricity Bill</b>		April 2019
<b>Day-time units</b>	147 at 17p each	
<b>Night-time units</b>	325 at 12p each	
<b>Monthly charge</b>	£7	

Work out the total that Jaden has to pay for his electricity in April 2019

.....  
(Total for Question 15 is 4 marks)

---

**TOTAL FOR SECTION A IS 50 MARKS**



Please check the examination details below before entering your candidate information

Candidate surname

Other names

**Pearson  
Edexcel Award**

Centre Number

--	--	--	--	--

Candidate Number

--	--	--	--

**Thursday 2 May 2019**

Morning (Time: 30 minutes)

Paper Reference **ANM10/1B**

**Number and Measure**

**Level 1**

**Section B (Non-Calculator)**



**You must have:** Ruler graduated in centimetres and millimetres, protractor, pen, HB pencil, eraser.

Total Marks

### Instructions

- Use **black** ink or ball-point pen.
- **Fill in the boxes** at the top of this page with your name, centre number and candidate number.
- Answer **all** questions.
- Answer the questions in the spaces provided – *there may be more space than you need.*
- **Calculators must not be used.**

### Information

- The total mark for this section is 30
- The total mark for this paper is 80
- The marks for **each** question are shown in brackets – *use this as a guide as to how much time to spend on each question.*

### Advice

- Read each question carefully before you start to answer it.
- Keep an eye on the time.
- Try to answer every question.
- Check your answers if you have time at the end.

Turn over ►

P59968A

©2019 Pearson Education Ltd.

6/6/A/



Pearson

Section B

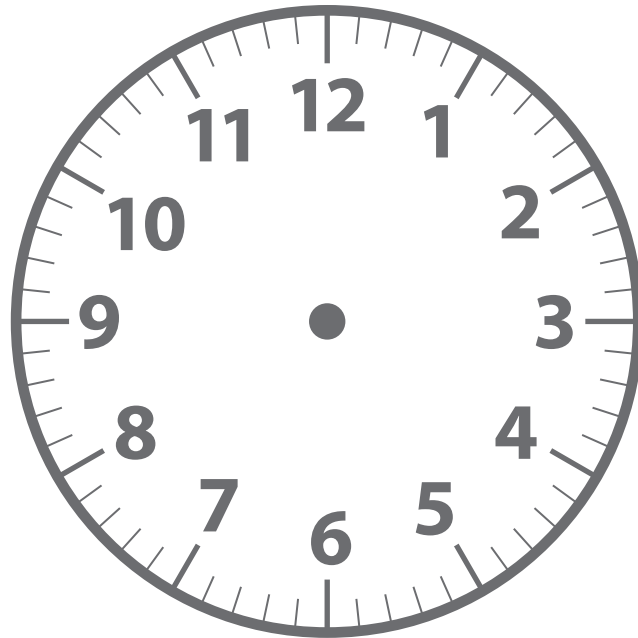
Answer ALL questions.

Write your answers in the spaces provided.

You must write down all the stages in your working.

You must NOT use a calculator for this section.

1 Here is a clock face.



(a) Show a time of twenty past nine on the clock face.

(2)

Arnold starts his lessons at twenty past nine in the morning and he goes for his lunch at 13 10

(b) How long is it from when Arnold starts his lessons until he goes for his lunch?

..... hours ..... minutes

(2)

(Total for Question 1 is 4 marks)



DO NOT WRITE IN THIS AREA

DO NOT WRITE IN THIS AREA

DO NOT WRITE IN THIS AREA

2 (a) Work out  $2842 + 69 + 731$

.....  
(2)

(b) Work out  $8.4 - 2.53$

.....  
(2)

(c) Work out  $834 \div 6$

.....  
(2)

(Total for Question 2 is 6 marks)



3 Here are some fractions.

$$\frac{8}{10} \quad \frac{9}{10} \quad \frac{3}{5} \quad \frac{9}{15}$$

(a) Which of these fractions is the largest?

.....  
(1)

(b) Write down the two equivalent fractions.

..... and .....  
(1)

(c) Work out  $\frac{9}{10} - \frac{8}{10}$

.....  
(1)

(d) Write  $\frac{8}{10}$  in its simplest form.

.....  
(1)

**(Total for Question 3 is 4 marks)**

4 Lemon cupcakes cost 53p each.

Which one of these amounts gives the best estimate for the total cost of 8 lemon cupcakes?

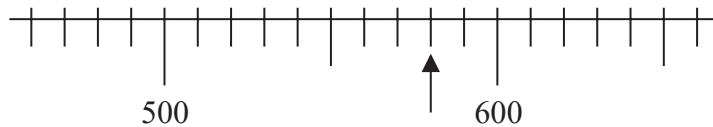
- A 7p
- B 50p
- C £3
- D £4
- E £13

.....  
**(Total for Question 4 is 1 mark)**



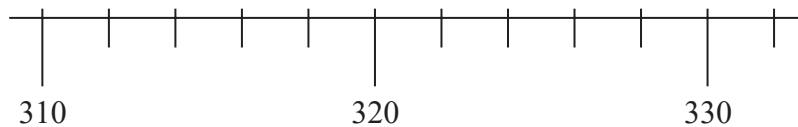


5



(a) Write down the number shown by the arrow.

.....  
(1)



(b) On the scale, mark with an arrow (↑) the number 316

(1)

**(Total for Question 5 is 2 mark)**

6 (a) Which metric unit can be used to give the amount of petrol that is put in a car's tank?

.....  
(1)

(b) Which imperial unit can be used to give the weight of a man?

.....  
(1)

**(Total for Question 6 is 2 marks)**



7 (a) Work out  $76 \times 1000$

.....  
(1)

(b) Work out  $7 \times 7$

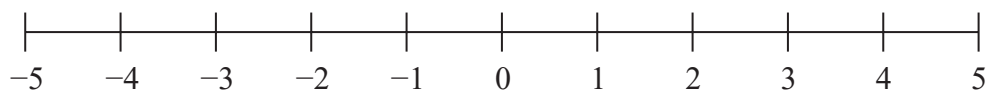
.....  
(1)

(c) Work out  $72 \div 8$

.....  
(1)

**(Total for Question 7 is 3 marks)**

8 Here is a number line.



(a) Work out  $-2 - 3$

.....  
(1)

(b) Work out  $-4 + 7 - 2$

.....  
(1)

**(Total for Question 8 is 2 marks)**



- 9 (a) Write these percentages in order of size.  
Start with the smallest percentage.

56%      17%      63%      9%      49%

.....  
(1)

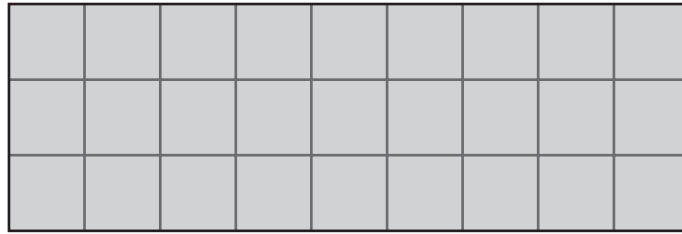
- (b) Write these numbers in order of size.  
Start with the smallest number.

4.7      4.68      5.9      4.09      4.17

.....  
(1)

**(Total for Question 9 is 2 marks)**

- 10 Here is a rectangle drawn on a grid of centimetre squares.



- (a) Work out the area of the rectangle.

..... cm<sup>2</sup>  
(2)

- (b) Work out the perimeter of the rectangle.

..... cm  
(2)

**(Total for Question 10 is 4 marks)**

**TOTAL FOR SECTION B IS 30 MARKS**  
**TOTAL FOR PAPER IS 80 MARKS**



DO NOT WRITE IN THIS AREA

DO NOT WRITE IN THIS AREA

DO NOT WRITE IN THIS AREA

**BLANK PAGE**

