

Please check the examination details below before entering your candidate information

Candidate surname

Other names

**Pearson**  
**Edexcel Award**

Centre Number

--	--	--	--	--

Candidate Number

--	--	--	--	--

**Tuesday 8 January 2019**

Morning (Time: 1 hour)

Paper Reference **ANM10/1A**

**Number and Measure**

**Level 1**

**Section A (Calculator)**

**You must have:** Ruler graduated in centimetres and millimetres, protractor, pen, HB pencil, eraser, calculator.

Total Marks

### Instructions

- Use **black** ink or ball-point pen.
- **Fill in the boxes** at the top of this page with your name, centre number and candidate number.
- Answer **all** questions.
- Answer the questions in the spaces provided – *there may be more space than you need.*
- **Calculators may be used.**
- If your calculator does not have a  $\pi$  button, take the value of  $\pi$  to be 3.142 unless the question instructs otherwise.



### Information

- The total mark for this section is 50
- The marks for **each** question are shown in brackets – *use this as a guide as to how much time to spend on each question.*

### Advice

- Read each question carefully before you start to answer it.
- Keep an eye on the time.
- Try to answer every question.
- Check your answers if you have time at the end.

Turn over ►

P59980A

©2019 Pearson Education Ltd.

6/6/6/1/



  
Pearson

**Section A**

**Answer ALL questions.**

**Write your answers in the spaces provided.**

**You must write down all the stages in your working.**

- 1 (a) Use your calculator to work out  $53.18 - 14.7 + 8.9$

.....  
(1)

- (b) Use your calculator to work out  $45.6 \times 0.15$

.....  
(1)

- (c) Use your calculator to work out  $36.18 \div 2.7$

.....  
(1)

---

**(Total for Question 1 is 3 marks)**

DO NOT WRITE IN THIS AREA

DO NOT WRITE IN THIS AREA

DO NOT WRITE IN THIS AREA



DO NOT WRITE IN THIS AREA

DO NOT WRITE IN THIS AREA

DO NOT WRITE IN THIS AREA

2 Here is some information from the fitness trackers of five of Anna's friends.

Name of friend	Kilometres walked	Floors walked up	Active minutes
Julie	8.0	30	65
Mabintou	8.5	32	71
Indre	9.6	36	81
Colin	5.8	11	46
Nazia	6.2	9	72

(a) Which one of these friends has walked the furthest?

.....  
(1)

(b) Which one of these friends has walked up the least number of floors?

.....  
(1)

Nazia has been active for more minutes than Colin has been active.

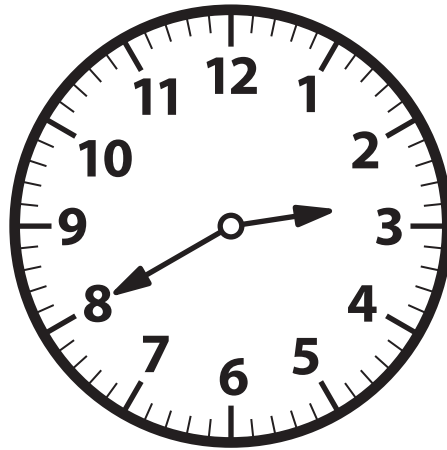
(c) How many minutes more?

..... minutes  
(2)

**(Total for Question 2 is 4 marks)**



3



It is **afternoon**.

Write down the time shown on this clock.

.....  
(Total for Question 3 is 2 marks)

4 (a) Work out  $\frac{3}{8}$  of 280

.....  
(2)

(b) Work out 30% of 280

.....  
(2)

(Total for Question 4 is 4 marks)

4



DO NOT WRITE IN THIS AREA

DO NOT WRITE IN THIS AREA

DO NOT WRITE IN THIS AREA

DO NOT WRITE IN THIS AREA

DO NOT WRITE IN THIS AREA

DO NOT WRITE IN THIS AREA

5 Here is the price list for each item sold in a school shop.

<b>SCHOOL SHOP</b>	
Pencil	29p
Pen	52p
Ruler	30p
Pencil Case	£1.85

Mohsen buys

- 3 pencils
- 2 pens
- 1 pencil case

He pays with a £10 note.

How much change should Mohsen get?

£ .....

(Total for Question 5 is 4 marks)



6 Here are some numbers.

10	12	17	20	25
----	----	----	----	----

From these numbers,

(a) write down a factor of 30

.....  
(1)

(b) write down a prime number

.....  
(1)

(c) write down a multiple of 6

.....  
(1)

**(Total for Question 6 is 3 marks)**

---

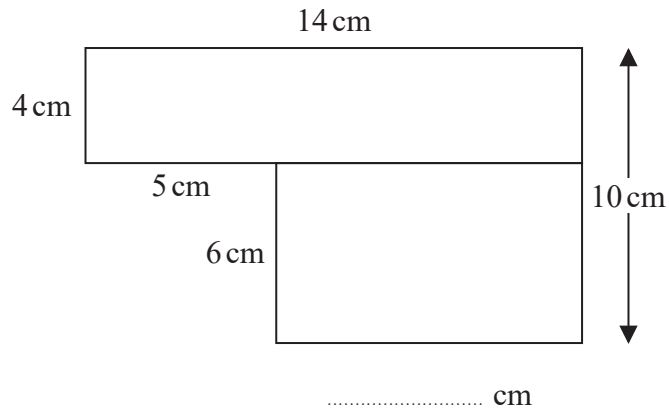


DO NOT WRITE IN THIS AREA

DO NOT WRITE IN THIS AREA

DO NOT WRITE IN THIS AREA

7 The diagram shows a shape made from two rectangles.



The length of one of the sides of one of the rectangles is missing from the diagram.

(a) Write the length of this side on the dotted line. (1)

(b) Work out the total area of the shape.

..... (3)

(Total for Question 7 is 4 marks)

8 (a) Write the number **seven hundred and four** in figures.

..... (1)

(b) Write the number 473 to the nearest ten.

..... (1)

(c) Write 5.67 to one decimal place.

..... (1)

(Total for Question 8 is 3 marks)



9 Here is part of a calendar for April 2019

April 2019						
Sun	Mon	Tue	Wed	Thu	Fri	Sat
	1	2	3	4	5	6
7	8	9	10	11	12	13
14	15					

(a) What day of the week is the 27th April 2019?

.....  
(1)

(b) What is the date three weeks after the 16th April 2019?

.....  
(2)

**(Total for Question 9 is 3 marks)**

10 Jasmine invests £3200 at 2% interest for one year.

How much interest does she get at the end of the year?

£ .....

**(Total for Question 10 is 2 marks)**



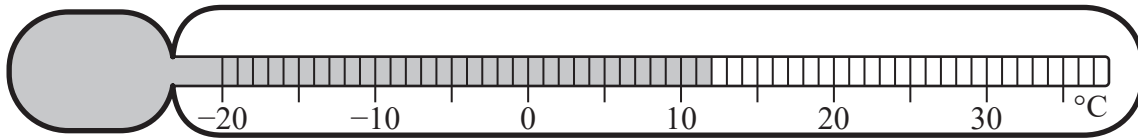


DO NOT WRITE IN THIS AREA

DO NOT WRITE IN THIS AREA

DO NOT WRITE IN THIS AREA

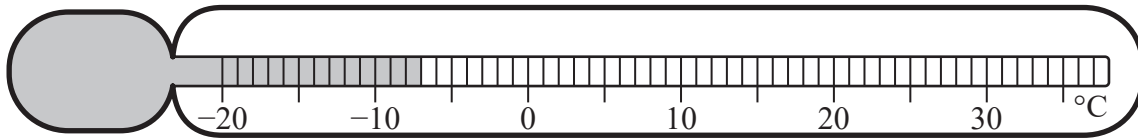
11 The thermometer shows the temperature in London one day.



(a) Write down the reading on the thermometer.

..... °C  
(1)

The thermometer shows the temperature in Edinburgh one night.



(b) Write down the reading on the thermometer.

..... °C  
(1)

(c) Work out the difference between a temperature of  $-2^{\circ}\text{C}$  and a temperature of  $6^{\circ}\text{C}$ .

..... °C  
(1)

**(Total for Question 11 is 3 marks)**

12 Edward buys a pack of 24 identical batteries for £8.99

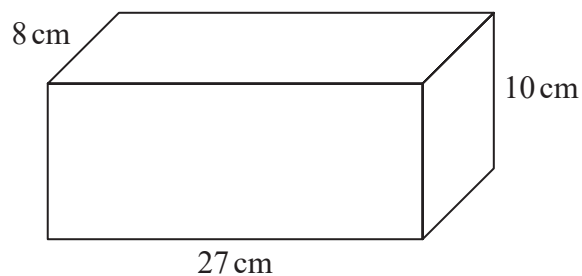
What is the cost of one of these batteries?  
Give your answer correct to the nearest penny.

..... p

**(Total for Question 12 is 3 marks)**



13 Here is a cuboid.



Work out the volume of the cuboid.

..... cm<sup>3</sup>

(Total for Question 13 is 2 marks)

14 (a) Which metric unit can be used to give the amount of flour needed to make a cake?

.....  
(1)

(b) Which imperial unit can be used to give the height of a person?

.....  
(1)

(Total for Question 14 is 2 marks)



DO NOT WRITE IN THIS AREA

DO NOT WRITE IN THIS AREA

DO NOT WRITE IN THIS AREA

15 (a) Write 80 days in weeks and days.

..... weeks ..... days  
(2)

(b) Work out  $3\text{ m } 76\text{ cm} + 4\text{ m } 63\text{ cm} - 2\text{ m } 37\text{ cm}$

.....  
(2)

(Total for Question 15 is 4 marks)



16 Here is Anton's mobile phone bill for the month of December 2018

<b>Mobile phone bill</b>	December 2018
<b>Calls</b>	145 minutes <b>(first 80 minutes free)</b>
<b>Texts</b>	530 <b>(first 350 free)</b>
<b>Costs</b>	
<b>Rental</b>	£8.99 per month
<b>Calls</b>	10p per minute
<b>Texts</b>	5p each

Work out the total amount that Anton has to pay for December 2018

.....  
(Total for Question 16 is 4 marks)

---

**TOTAL FOR SECTION A IS 50 MARKS**

DO NOT WRITE IN THIS AREA

DO NOT WRITE IN THIS AREA

DO NOT WRITE IN THIS AREA



Please check the examination details below before entering your candidate information

Candidate surname

Other names

**Pearson**  
**Edexcel Award**

Centre Number

Candidate Number

**Tuesday 8 January 2019**

Morning (Time: 30 minutes)

Paper Reference **ANM10/1B**

**Number and Measure**

**Level 1**

**Section B (Non-Calculator)**

**You must have:** Ruler graduated in centimetres and millimetres, protractor, pen, HB pencil, eraser.

Total Marks

### Instructions

- Use **black** ink or ball-point pen.
- **Fill in the boxes** at the top of this page with your name, centre number and candidate number.
- Answer **all** questions.
- Answer the questions in the spaces provided – *there may be more space than you need.*
- **Calculators must not be used.**



### Information

- The total mark for this section is 30
- The total mark for this paper is 80
- The marks for **each** question are shown in brackets – *use this as a guide as to how much time to spend on each question.*

### Advice

- Read each question carefully before you start to answer it.
- Keep an eye on the time.
- Try to answer every question.
- Check your answers if you have time at the end.

Turn over ►

P59979A

©2019 Pearson Education Ltd.

6/6/1/1/



Pearson

## Section B

Answer ALL questions.

Write your answers in the spaces provided.

You must write down all the stages in your working.

You must NOT use a calculator for this section.

- 1 (a) Write these amounts of money in order of size.  
Start with the smallest amount.

£2.43      £1.89      289p      204p      £2.17

.....  
(1)

- (b) Write these numbers in order of size.  
Start with the smallest number.

2.701      3.9      2.8      2.17      3.87

.....  
(1)

- (c) Write these percentages in order of size.  
Start with the smallest percentage.

67%      83%      9%      65%      89%

.....  
(1)

- (d) Write  $\frac{1}{4}$  as a percentage.

.....%

(1)

(Total for Question 1 is 4 marks)

DO NOT WRITE IN THIS AREA

DO NOT WRITE IN THIS AREA

DO NOT WRITE IN THIS AREA



DO NOT WRITE IN THIS AREA

DO NOT WRITE IN THIS AREA

DO NOT WRITE IN THIS AREA

2 (a) Work out  $2517 + 75 + 124$

.....  
(2)

(b) Work out  $£27 - £14.87$

£ .....  
(2)

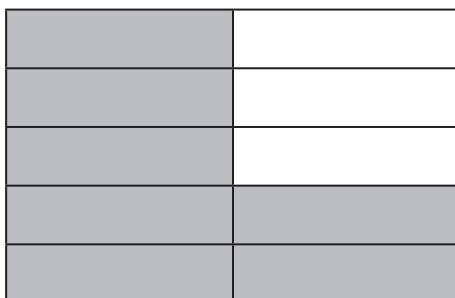
(c) Work out  $753 \times 6$

.....  
(2)

(Total for Question 2 is 6 marks)



3 (a) What fraction of this shape is shaded?



.....  
(1)

(b) Work out  $\frac{11}{14} - \frac{6}{14}$

.....  
(1)

(c) Write down a fraction that is equivalent to  $\frac{2}{5}$

.....  
(1)

(d) Write  $\frac{5}{15}$  as a fraction in its simplest form.

.....  
(1)

**(Total for Question 3 is 4 marks)**





4 (a) Work out  $8 \times 7$

.....  
(1)

(b) Work out  $54\,000 \div 100$

.....  
(1)

(c) Work out  $93 \times 1000$

.....  
(1)

(d) Write 0.7 as a fraction.

.....  
(1)

**(Total for Question 4 is 4 marks)**

5 A cup of coffee costs £1.95

Which of these amounts gives the most sensible estimate for the cost of 4 cups of coffee?

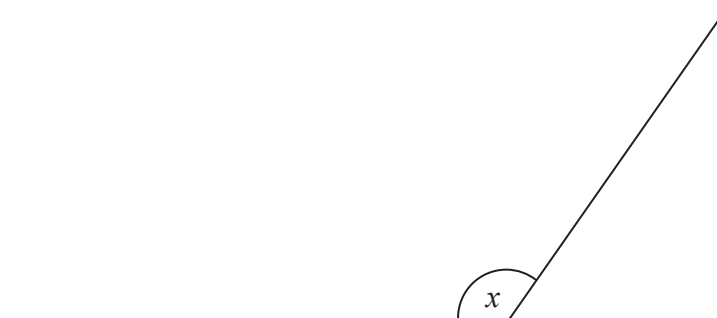
- A 50p
- B £2
- C £4
- D £6
- E £8

.....

**(Total for Question 5 is 1 mark)**



- 6 (a) Measure the size of the angle marked  $x$ .



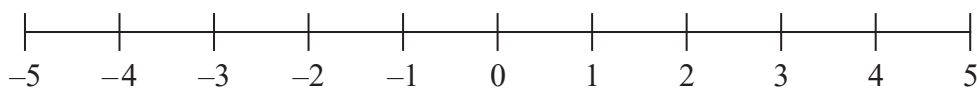
.....  
(1)

- (b) In the space below, draw a straight line 8 cm long.

(1)

(Total for Question 6 is 2 marks)

- 7 Here is a number line.



- (a) Work out  $-3 + 7$

.....  
(1)

- (b) Work out  $5 - 8$

.....  
(1)

(Total for Question 7 is 2 marks)

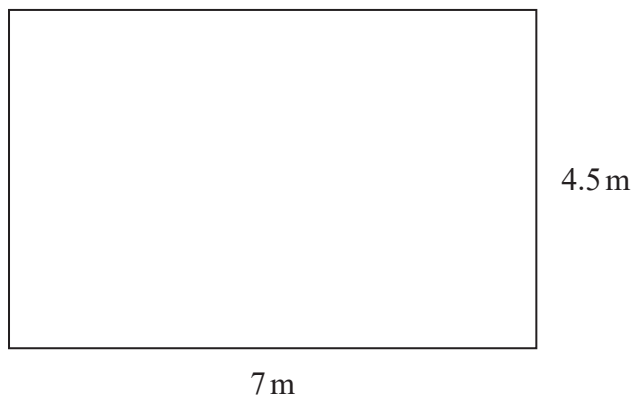


DO NOT WRITE IN THIS AREA

DO NOT WRITE IN THIS AREA

DO NOT WRITE IN THIS AREA

8 The diagram shows a rectangle.



(a) Work out the perimeter of the rectangle.

.....m  
(2)

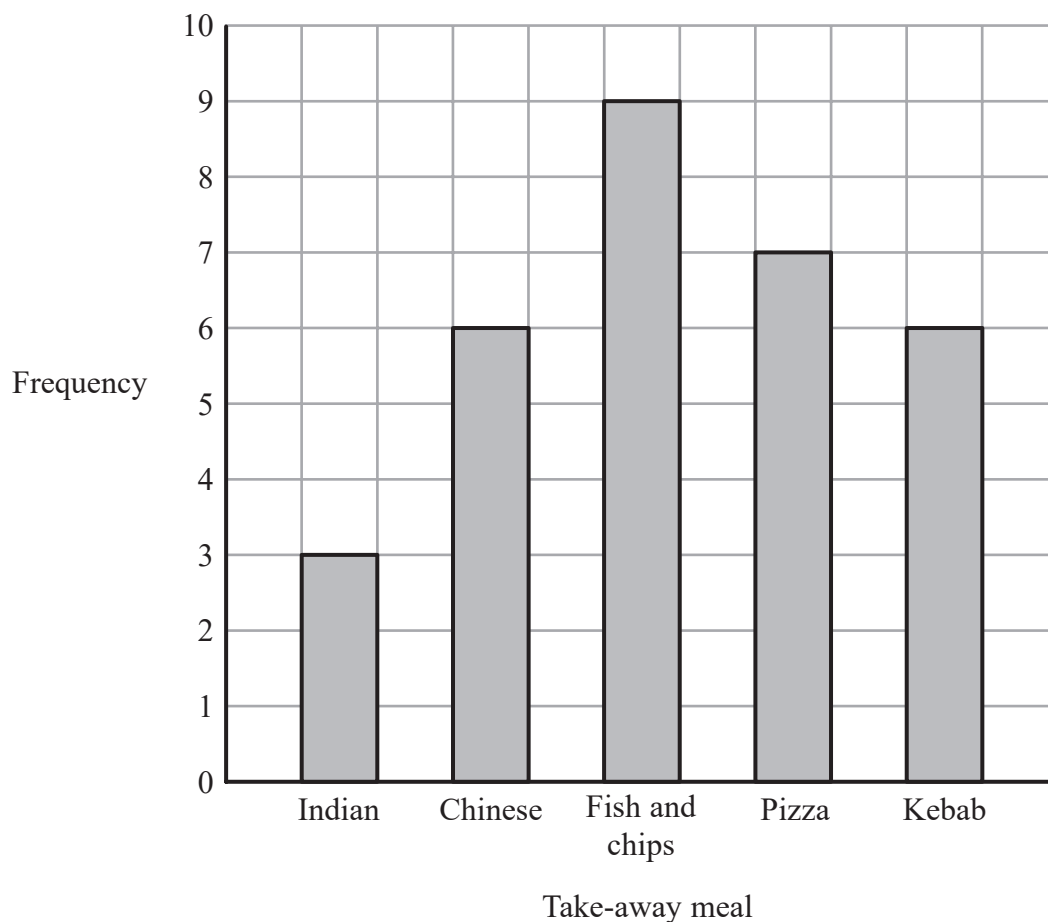
(b) Change 9 metres into centimetres.

.....centimetres  
(1)

(Total for Question 8 is 3 marks)



9 The bar chart shows information about the favourite take-away meal of each child in class 7B.



(a) Which take-away meal is the favourite of most children in class 7B?

.....  
(1)

(b) Which two take-away meals have the same frequency?

..... and .....  
(1)

(c) How many children are in class 7B?

.....  
(2)

**(Total for Question 9 is 4 marks)**

**TOTAL FOR SECTION B IS 30 MARKS  
TOTAL FOR PAPER IS 80 MARKS**

