

Write your name here

Surname

Other names

**Pearson**  
**Edexcel Award**

Centre Number

--	--	--	--	--

Candidate Number

--	--	--	--

## Number and Measure

Level 2

Section A (Calculator)

Thursday 4 May 2017 – Morning

Time: 1 hour

Paper Reference

**ANM20/2A**

**You must have:** Ruler graduated in centimetres and millimetres, protractor, pen, HB pencil, eraser, calculator.

Total Marks

### Instructions

- Use **black** ink or ball-point pen.
- **Fill in the boxes** at the top of this page with your name, centre number and candidate number.
- Answer **all** questions.
- Answer the questions in the spaces provided – *there may be more space than you need.*
- **Calculators may be used.**
- If your calculator does not have a  $\pi$  button, take the value of  $\pi$  to be 3.142 unless the question instructs otherwise.



### Information

- The total mark for this section is 50
- The marks for **each** question are shown in brackets – *use this as a guide as to how much time to spend on each question.*

### Advice

- Read each question carefully before you start to answer it.
- Keep an eye on the time.
- Try to answer every question.
- Check your answers if you have time at the end.

Turn over ►

P48378A

©2017 Pearson Education Ltd.

6/6/6/



  
Pearson

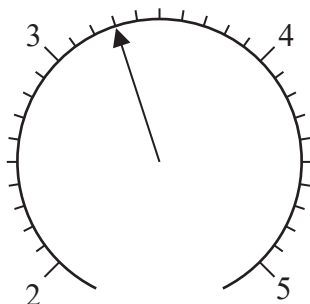
Section A

Answer ALL questions.

Write your answers in the spaces provided.

You must write down all the stages in your working.

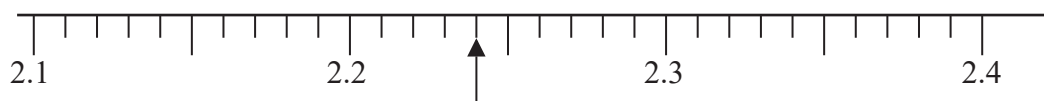
1 (a)



Write down the number marked with the arrow.

.....  
(1)

(b)



Write down the number marked with the arrow.

.....  
(1)

(Total for Question 1 is 2 marks)

2 (a) Work out  $-5 \times -8$

.....  
(1)

(b) Work out  $-4 + -7$

.....  
(1)

(Total for Question 2 is 2 marks)

DO NOT WRITE IN THIS AREA

DO NOT WRITE IN THIS AREA

DO NOT WRITE IN THIS AREA



DO NOT WRITE IN THIS AREA

DO NOT WRITE IN THIS AREA

DO NOT WRITE IN THIS AREA

- 3 (a) Work out  $£425 \div 9$   
Give your answer to the nearest penny.

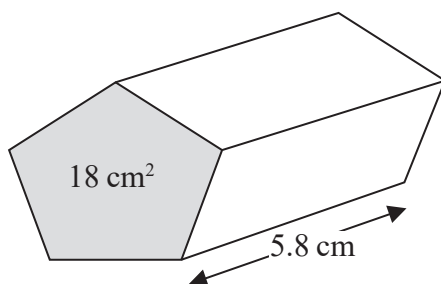
£.....  
(2)

- (b) Work out  $0.63 \times 24.5$

.....  
(1)

**(Total for Question 3 is 3 marks)**

- 4 Work out the volume of this prism.



..... cm<sup>3</sup>

**(Total for Question 4 is 2 marks)**

- 5 Work out 6% of 625

.....

**(Total for Question 5 is 2 marks)**



6 (a) Find the value of  $78^2$

.....  
(1)

(b) Find the value of  $\sqrt{324}$

.....  
(1)

(c) Work out the value of  $2^3 \times 3^4$

.....  
(2)

**(Total for Question 6 is 4 marks)**

7 Change 1408 South African Rand into pounds (£).  
Use an exchange rate of £1 = 17.6 South African Rand.

£.....

**(Total for Question 7 is 2 marks)**

8 Work out  $1\frac{3}{4} \div 2\frac{4}{5}$

.....

**(Total for Question 8 is 2 marks)**



DO NOT WRITE IN THIS AREA

DO NOT WRITE IN THIS AREA

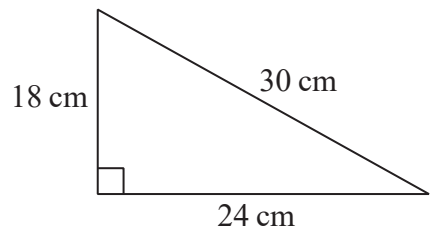
DO NOT WRITE IN THIS AREA

9 Change 4.5 metres into feet.  
(1 metre = 3.28 feet)

..... feet

(Total for Question 9 is 2 marks)

10



Work out the area of this triangle.

..... cm<sup>2</sup>

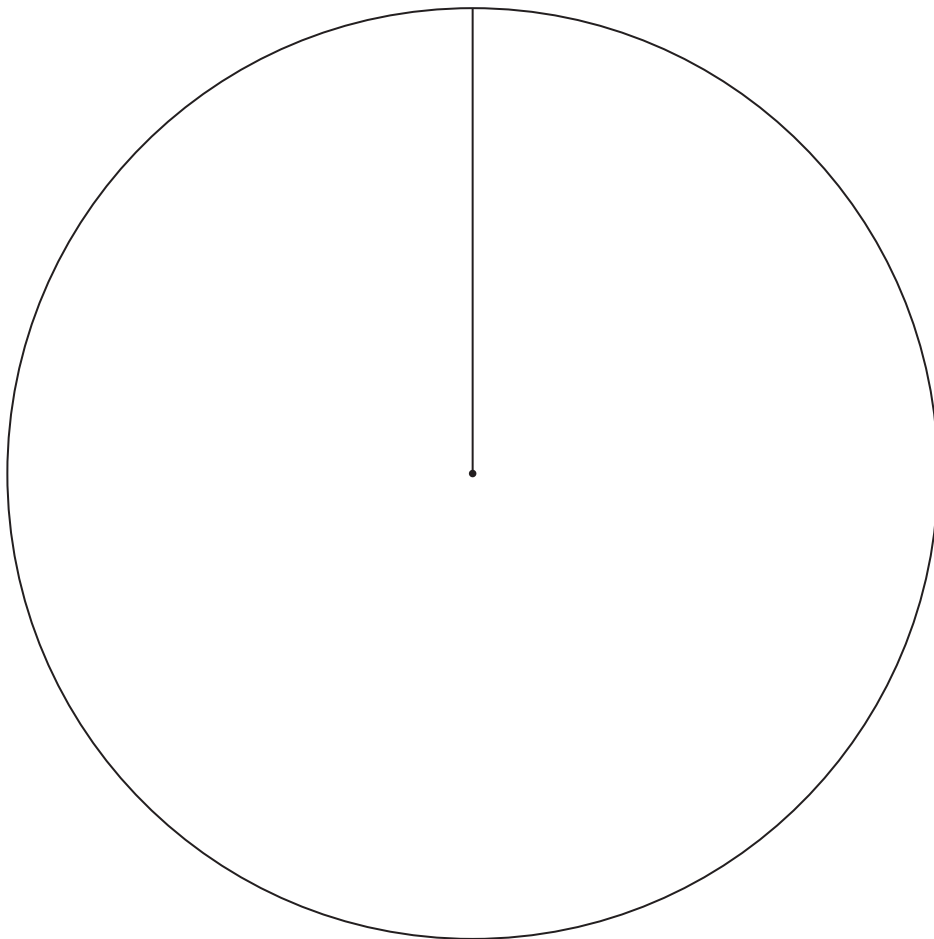
(Total for Question 10 is 2 marks)



- 11 This table shows the number of students who travelled to school by walking, by car and by bus last Monday.

Walking	260
Car	140
Bus	80

Draw a pie chart for this information.



(Total for Question 11 is 4 marks)



DO NOT WRITE IN THIS AREA

DO NOT WRITE IN THIS AREA

DO NOT WRITE IN THIS AREA

12 Natalie is paid a basic hourly rate of £12 per hour for the first 28 hours that she works. When she works overtime, her overtime is paid at 1.5 times her basic hourly rate.

Last week Natalie worked for 32 hours, which included 4 hours overtime. She paid £81.60 tax and £24.48 National Insurance.

Work out Natalie's pay for last week after these deductions.

£.....

(Total for Question 12 is 4 marks)

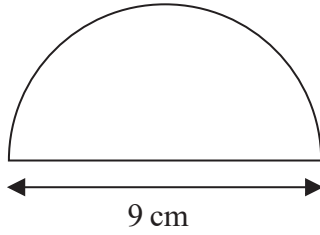
13 Find the Highest Common Factor (HCF) of 40 and 140

.....

(Total for Question 13 is 3 marks)



- 14 A semicircle has a diameter of 9 cm.



Work out the perimeter of the semicircle.

..... cm

**(Total for Question 14 is 3 marks)**

- 15 Sally invests £5000 for 3 years in an account paying simple interest at a rate of 4% per year.

Work out the total amount of simple interest she has been paid by the end of the 3 years.

£.....

**(Total for Question 15 is 3 marks)**



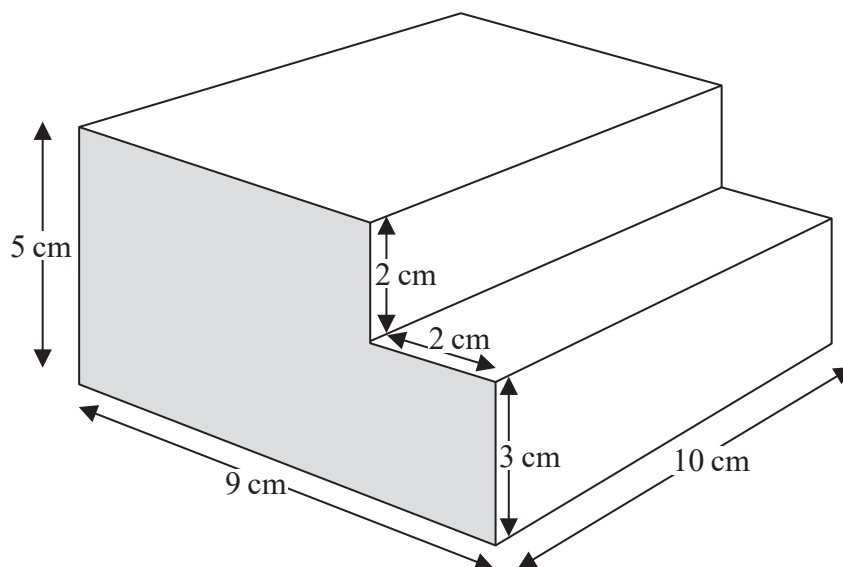


DO NOT WRITE IN THIS AREA

DO NOT WRITE IN THIS AREA

DO NOT WRITE IN THIS AREA

16 Here is a prism.  
All the corners are right angles.



(i) Work out the area of the shaded face.

..... cm<sup>2</sup>

(ii) Work out the volume of the prism.

..... cm<sup>3</sup>

(Total for Question 16 is 4 marks)



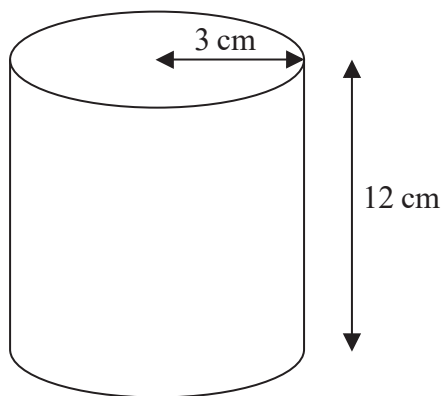
17 A train stops at a station so that passengers can get off and get on.  
The number of passengers on the train increases from 640 to 864

What is the percentage increase in the number of passengers on the train?

..... %

(Total for Question 17 is 3 marks)

18 Here is a cylinder.



The height of the cylinder is 12 cm.  
The radius of the cylinder is 3 cm.

Work out the volume of the cylinder.

..... cm<sup>3</sup>

(Total for Question 18 is 3 marks)

TOTAL FOR SECTION A IS 50 MARKS



DO NOT WRITE IN THIS AREA

DO NOT WRITE IN THIS AREA

DO NOT WRITE IN THIS AREA

**BLANK PAGE**



DO NOT WRITE IN THIS AREA

DO NOT WRITE IN THIS AREA

DO NOT WRITE IN THIS AREA

**BLANK PAGE**

